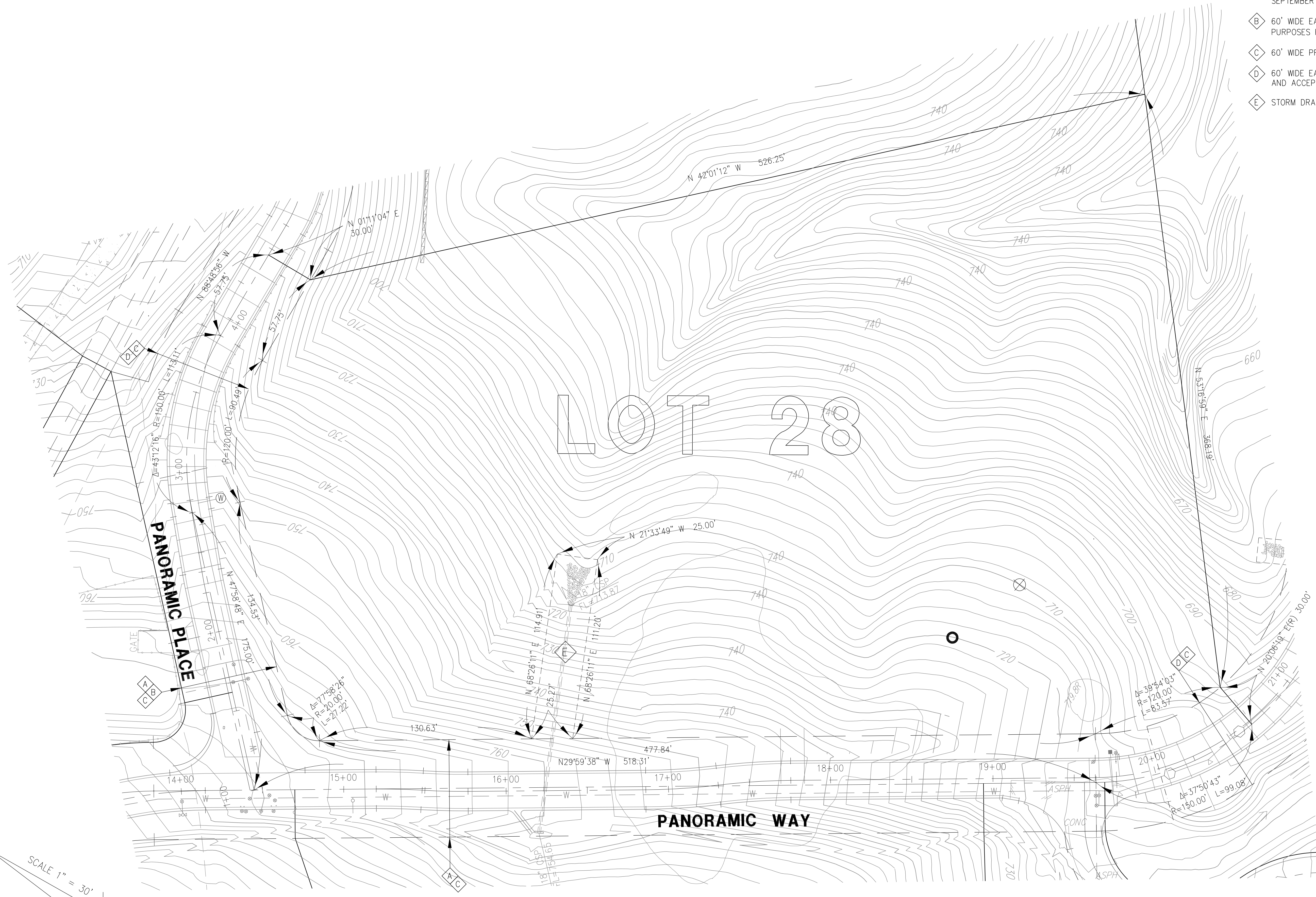


EASEMENTS

- Ⓐ 60' WIDE EASEMENT TO VALLECITOS WATER DISTRICT FOR PIPELINE PURPOSES, RECORDED SEPTEMBER 8, 1995, AS DOC # 1995-0399910 OF O.R.
- Ⓑ 60' WIDE EASEMENT TO VALLECITOS WATER DISTRICT FOR INGRESS AND EGRESS PURPOSES RECORDED SEPTEMBER 8, 1995, AS DOC # 1995-0399909.
- Ⓒ 60' WIDE PRIVATE ROAD AND PUBLIC UTILITY EASEMENT PER MAP 13390.
- Ⓓ 60' WIDE EASEMENT TO VALLECITOS WATER DISTRICT FOR PIPELINE PURPOSES DEDICATED AND ACCEPTED PER MAP 13931.
- Ⓔ STORM DRAIN EASEMENT PROPOSED PER MAP 13931.



LOT 28

PANORAMIC PLACE

PANORAMIC WAY

SEPTIC INFORMATION, 1982 DATA

- ⊙ APPROX. LOCATION TEST HOLE, 15 MIN/INCH
 - ⊗ APPROX. LOCATION DEEP HOLE
- LOT ORIGINALLY APPROVED FOR 390 FEET FOR FOR 3 BEDROOM RESIDENCE WITH 100% RESERVE 5' TRENCH WITH 3' OF GRAVEL

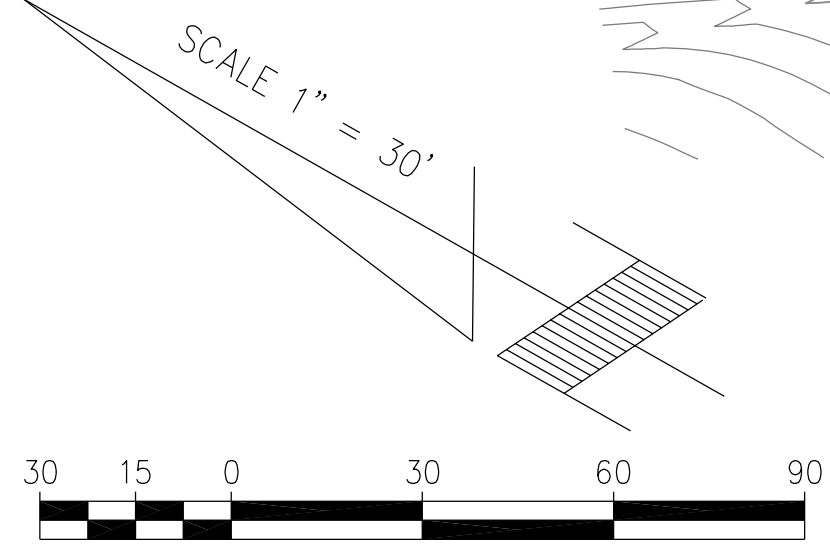
AREA
 5.03 ACRES - GROSS
 4.40 ACRES - NET

ADDRESS
 2345 PANORAMIC WAY
ASSESSOR'S PARCEL NUMBER
 172-112-21

LOT 28 PANORAMIC ESTATES
MAP 13931, COUNTY OF SAN DIEGO

SOURCE OF TOPOGRAPHY

ORIGINAL TOPOGRAPHY WAS PREPARED BY SAN-LO AERIAL PHOTOGRAMETRIS IN 1988 FOR STA ENGINEERING, INC. AND WAS SUPPLEMENTED BY FIELD SURVEY IN 1996 TO REFLECT WORK PERFORMED BY VALLECITOS WATER DISTRICT AND AGAIN MODIFIED TO REFLECT IMPROVEMENTS DESIGNED AND CONSTRUCTED AS PART OF THE PANORAMIC ESTATES DEVELOPMENT IN 2005.



STA ENGINEERING, INCORPORATED
 P.O. BOX 2636 2530 3/4 FOOTHILL DRIVE
 VISTA, CA 92085-2636 (760) 758-8051 FAX: 760-758-8059
SURVEYING, CIVIL & TRAFFIC ENGINEERING