

For Sale
\$850,000
5,898 SF



St. Mark's Episcopal Church

3120 East 24th Street
Des Moines, Iowa 50317

Property Highlights

- Sale Price: \$850,000
- Sold-As-Is
- 5,898 square feet
- Lot Size: 4.75 acres
- Finished lower level
- Built in 1969
- Potential Redevelopment Site
- 3 Legal Parcels
- Interstate 235 visibility
- Zoning: P2 - Public, Civic, & Institutional District

Location Description

Located off Interstate 235, south of the East Euclid Avenue exit. Neighborhood is a mix of commercial, retail, and residential.

OFFERING SUMMARY

Sale Price	\$850,000
Building Size	5,898 SF
Lot Size	4.75 Acres

DEMOGRAPHICS

Stats	Population	Avg. HH Income
1 Mile	6,750	\$74,260
3 Miles	66,036	\$70,124
5 Miles	145,931	\$76,162

For more information

Kevin Crowley, SIOR

C: 515 991 7000
kcrowley@iowarealtycommercial.com

Doug Pfeil

C: 515 419 9546
dpfeil@iowarealtycommercial.com

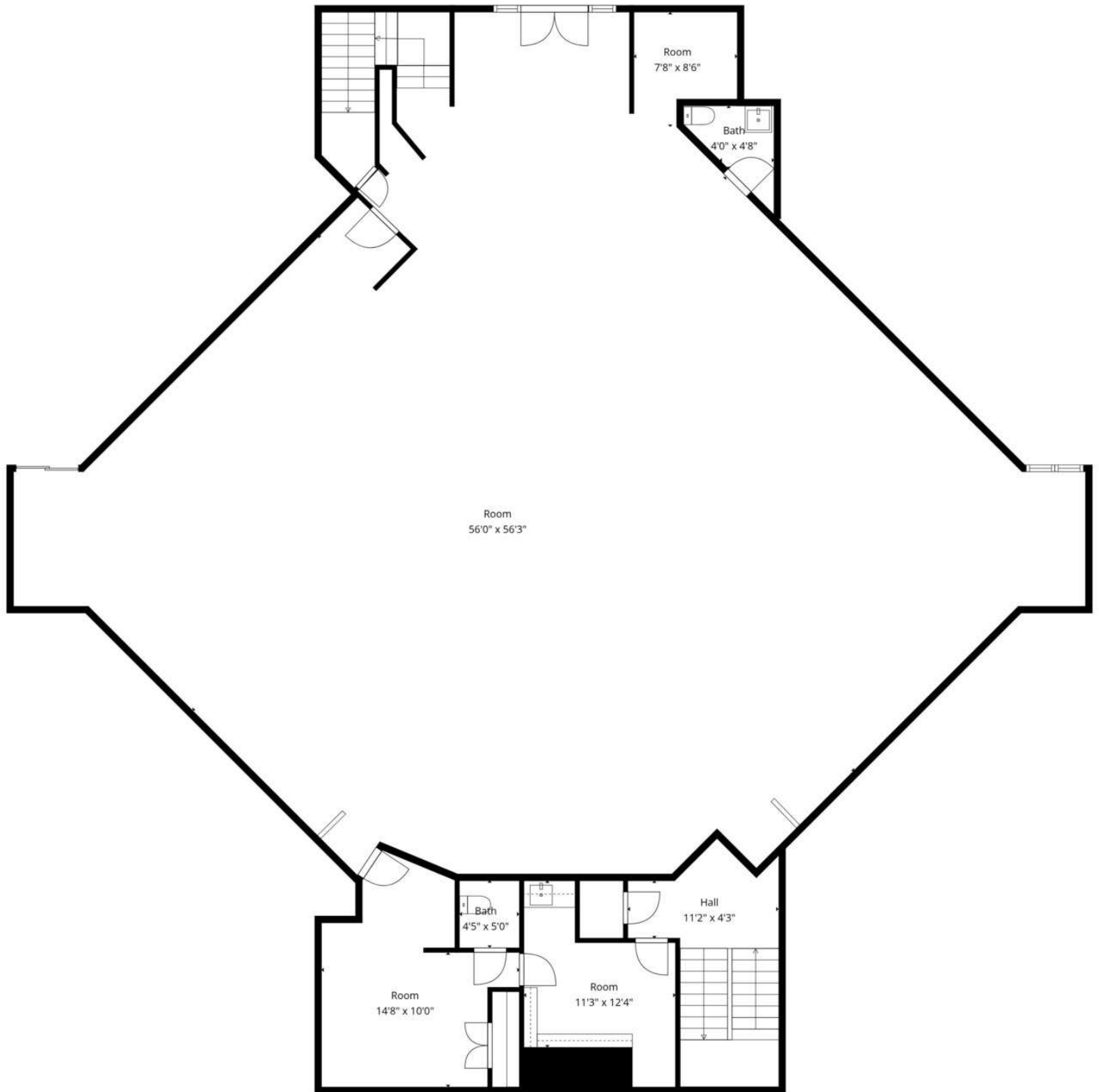
Additional Photos



Additional Photos



FLOOR PLAN



Measurements Deemed Highly Reliable But Not Guaranteed.

FLOOR PLAN



Measurements Deemed Highly Reliable But Not Guaranteed.

Location Maps

