

2681 S Main St, Kennesaw, GA 30144



JOHN ROBINSON
678.712.4541
JOHN@TERMINUSCRE.COM



BUILDING HIGHLIGHTS

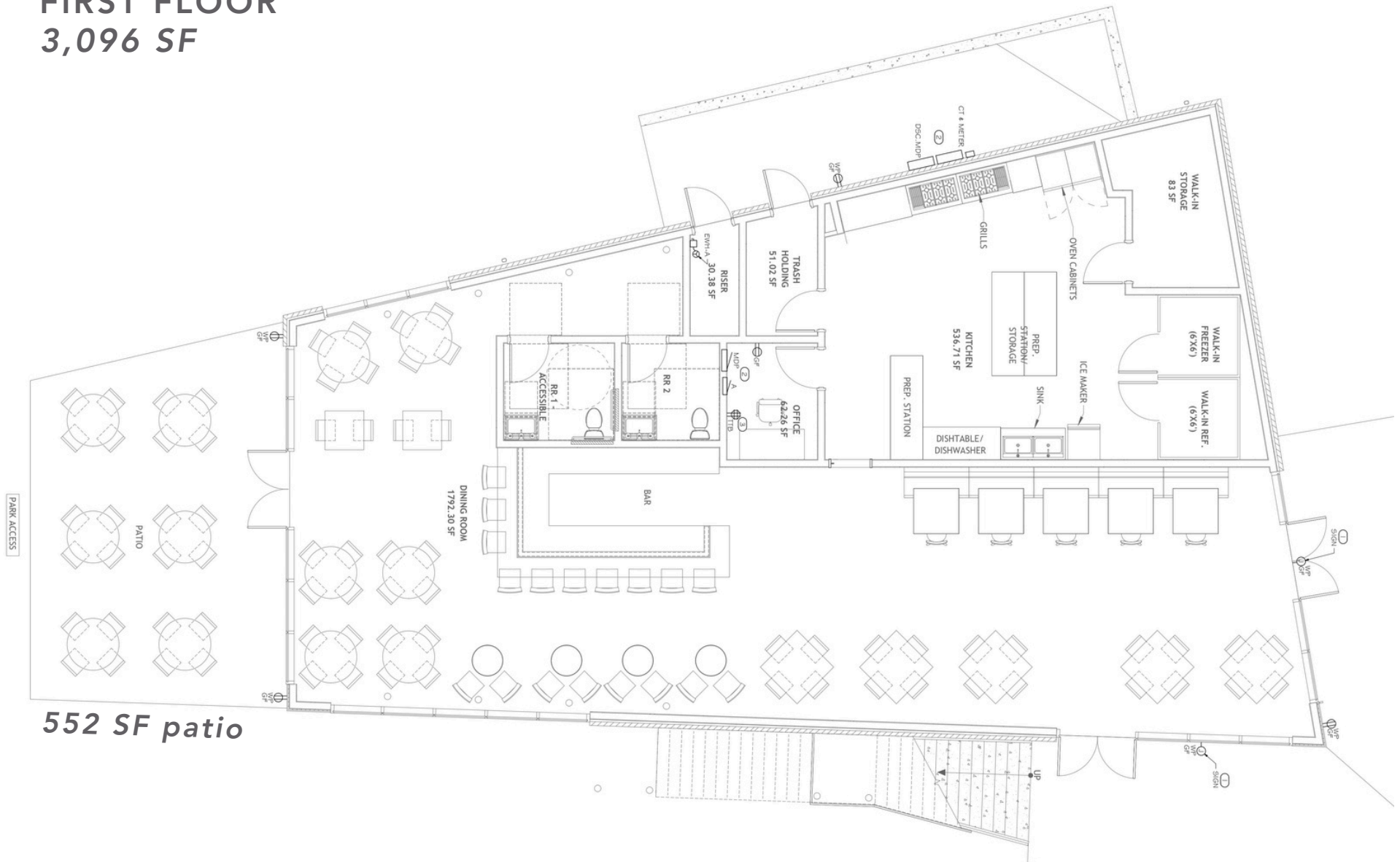
3,096 Sq Ft of Restaurant Space Available in Downtown Kennesaw

- Additional 1,318 Sq Ft of Covered Rooftop Bar
- Additional 552 Sq Ft of ground floor patio space
- Freestanding Building with high visibility from Main Street (14K VPD)
- Street parking in front, steps from restaurant
- New pedestrian connections to Downtown Kennesaw
- 300 units on-site under construction
- New Housing within Walking Distance (The Lacy at South Main - 318 Units)



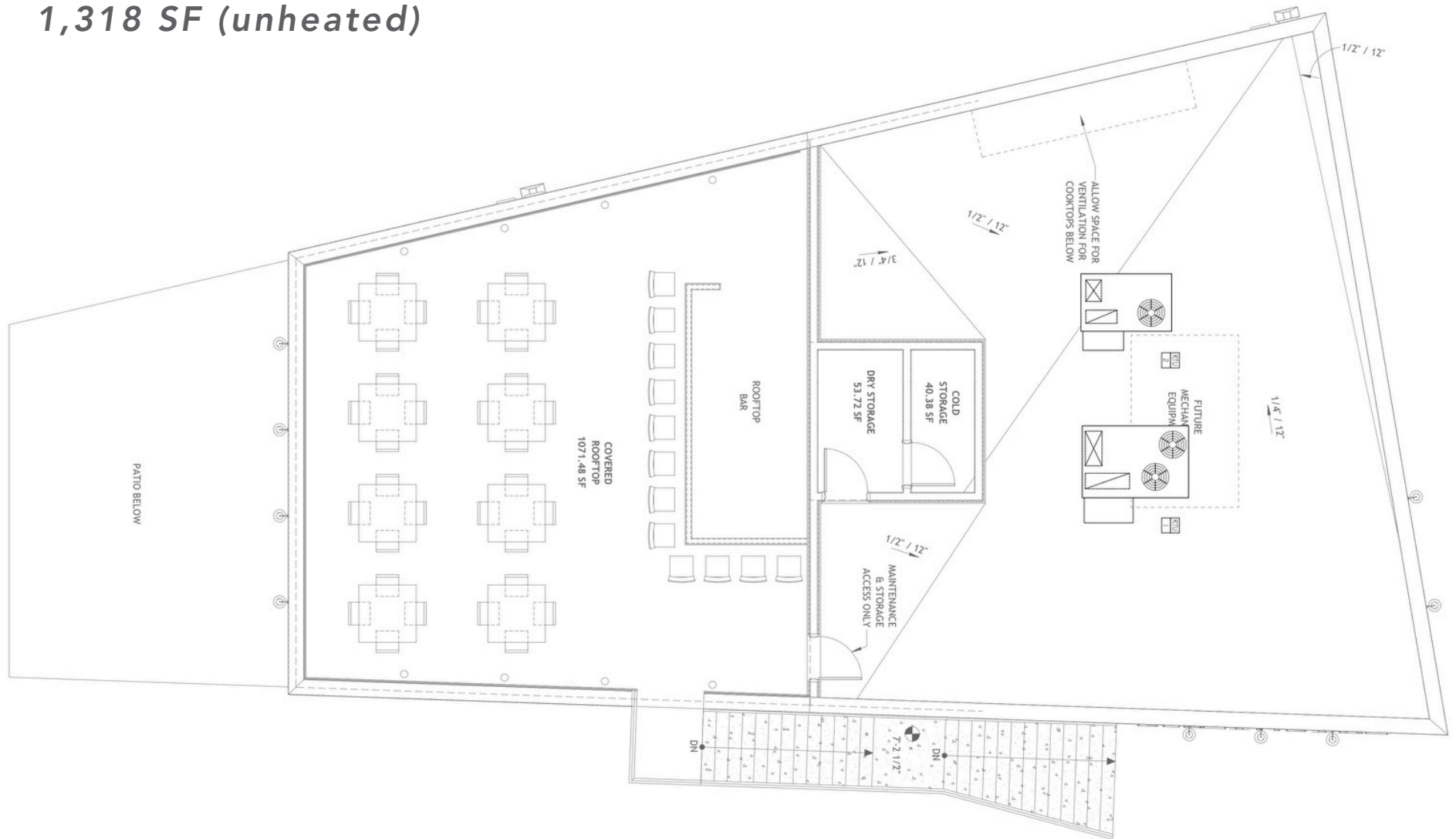
FLOOR PLAN

FIRST FLOOR
3,096 SF

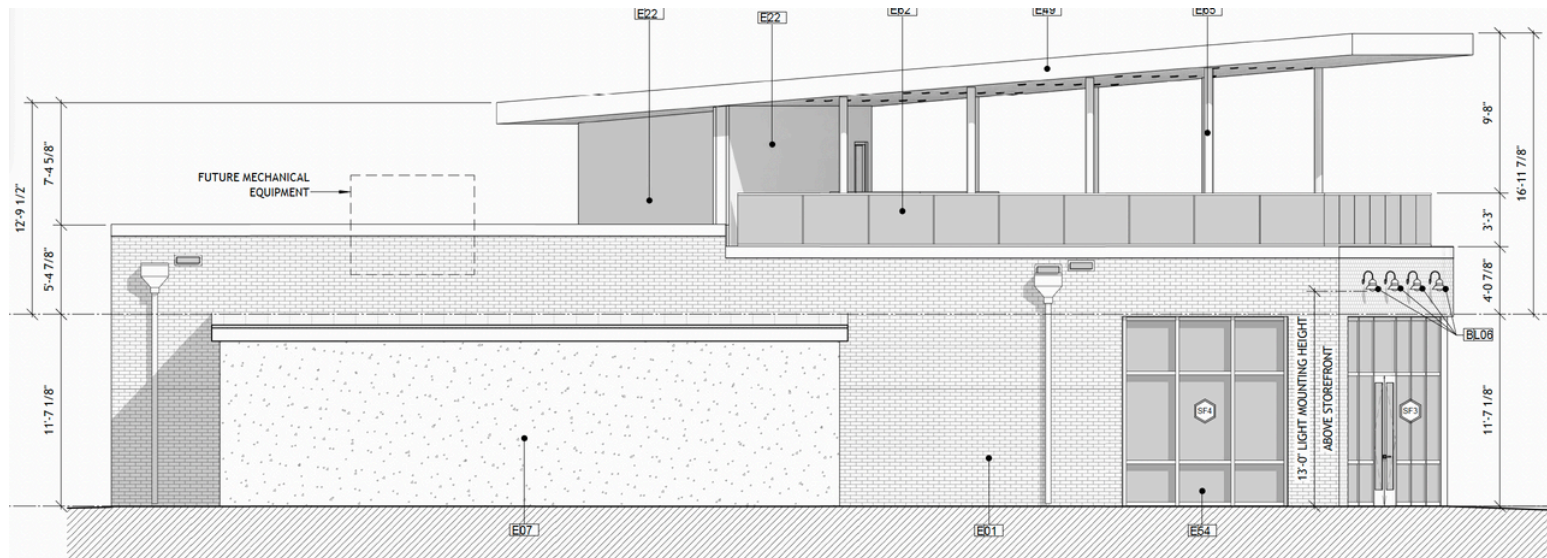
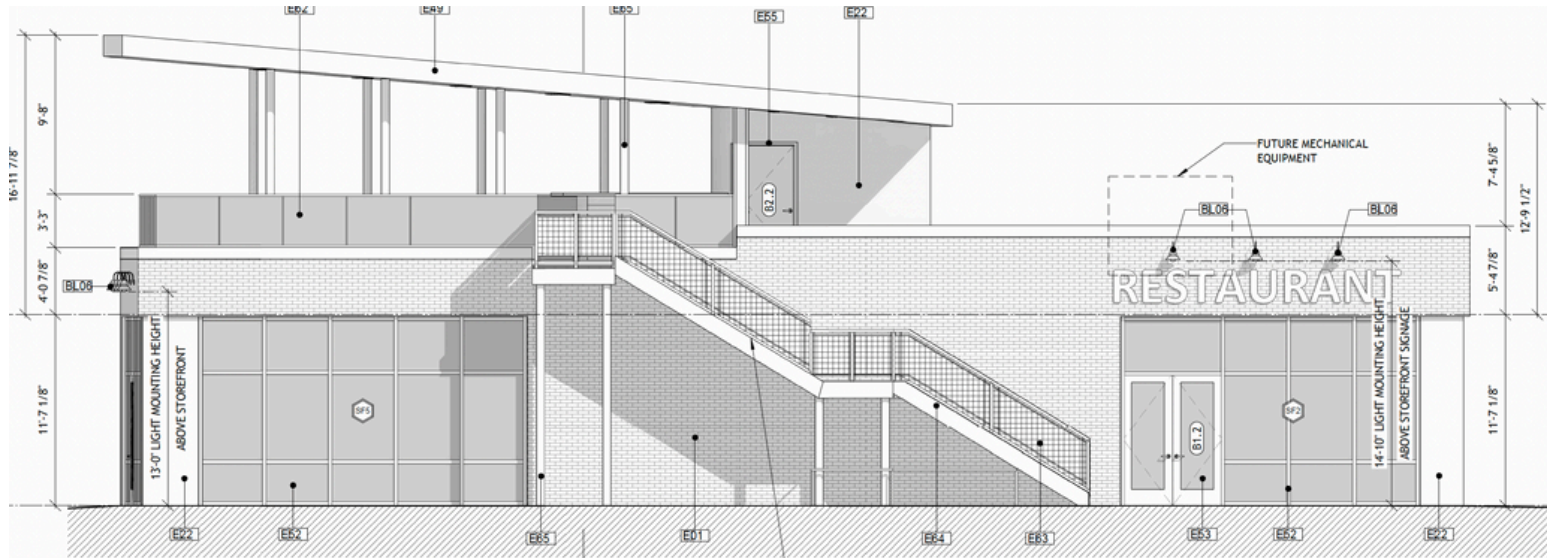


FLOOR PLAN

SECOND FLOOR 1,318 SF (unheated)



BUILDING RENDERINGS

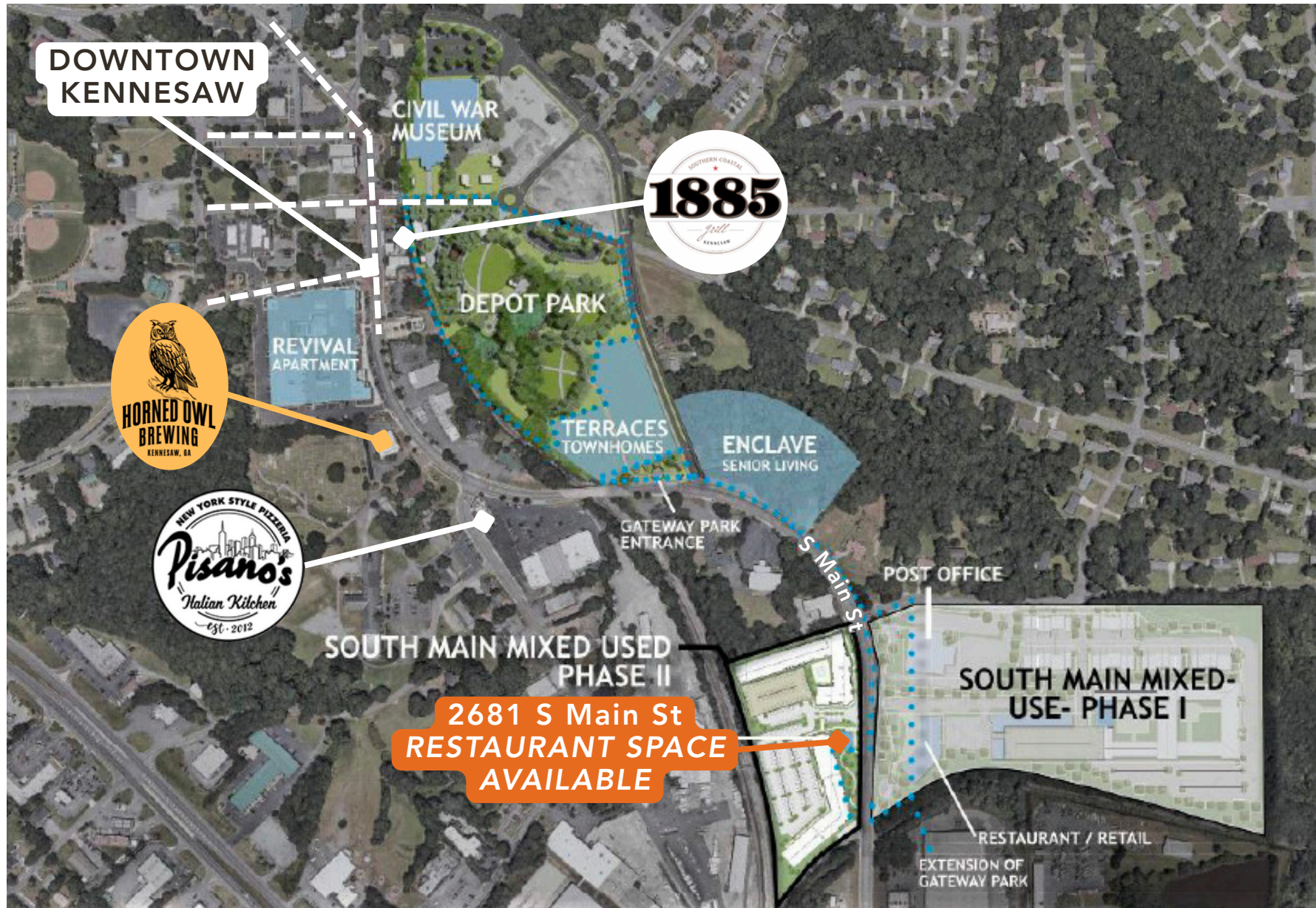


SITE PLAN

RESIDENTIAL:
 300 UNITS
 60% 1-BEDROOM = 180 UNITS = 180 SPACES
 @ 750 SF/UNIT = 135,000 RSF
 35% 2-BEDROOM = 105 UNITS = 210 SPACES
 @ 1,100 SF/UNIT = 115,500 RSF
 5% 3-BEDROOM = 15 UNITS = 30 SPACES
 @ 1,400 SF/UNIT = 21,000 RSF



DOWNTOWN AMENITY MAP





JOHN ROBINSON | 678.712.4541 | JOHN@TERMINUSCRE.COM

