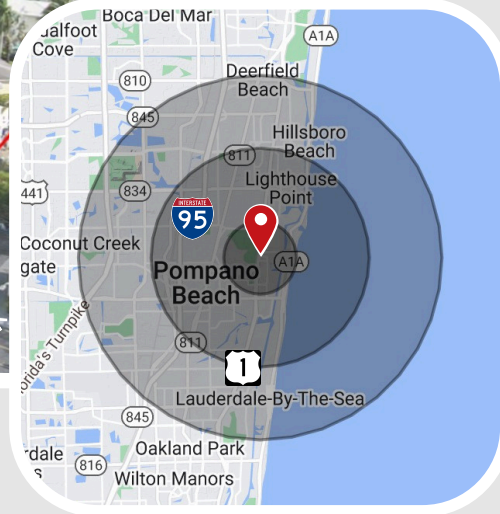


RETAIL FOR LEASE



1290-1340 N FEDERAL HWY, POMPANO BEACH 33062



BELCREST PLAZA

HIGHLIGHTS

- 450' frontage on Federal Hwy with 55,000 VPD
- Located 3 miles East of I-95, 1 mile West of A1A
- Only A1A access between Hillsboro to Atlantic
- Connect to underserved retail market on barrier island via 14th St. Causeway
- Pull residents from booming Lighthouse Point & Pompano Beach
- Surrounded by many major retailers, economic drivers, and new construction.

DESCRIPTION

Belcrest Plaza is a Neighborhood Shopping Center in Pompano Beach. Recently under new ownership, Belcrest Plaza is currently undergoing a \$1M+ exterior renovation, including a modernized façade, fresh paint, and enhanced landscaping. New tenants can take advantage of the Pylon and parapet wall signage to maximize on the 450' of frontage and substantial visibility along N Federal Highway.

EXECUTIVE SUMMARY

Pricing Guidance	± \$24-29PSF
Lease Type	NNN
Min Divisible	± 2,550 SF
Max Contiguous	± 7,000 SF
Unit Type	Retail
Parking Ratio	3.55/1,000
Frontage	450 FT
Zoning	B-3



(954) 372-7280



info@levelrealty.com



3101 N Federal Hwy, Ste 502 Fort Lauderdale, FL 33306

AVAILABLE SPACES



1290-1340 N FEDERAL HWY, POMPANO BEACH 33062



Units 1332-1338 Stand alone building with huge parapet wall and access to both Federal Hwy and Harbor drive. Can function as retail or professional office space.
±2,000-7,000 SF

Unit 1318 Dry retail space in immaculate condition. This space is a mix of storefront, 2 large private rooms, and ample storage space in the back for products, including a restroom and small office.
±1,450 SF

Unit 1310 Dry retail space in immaculate condition. This space is a mix of storefront, 2 large private rooms, and ample storage space in the back for products, including a restroom and small office.
±2,829 SF

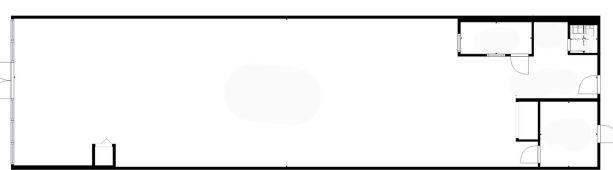
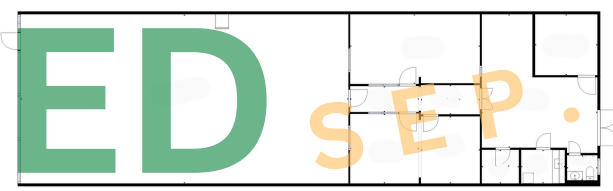
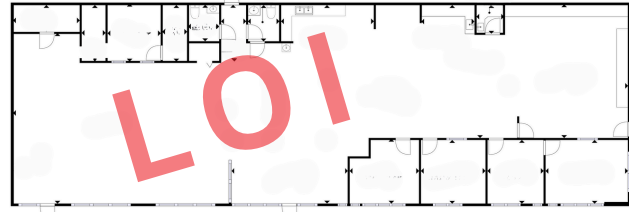
Unit 1306 Dry retail space. Most recently this space was used to store goods and other products, and is currently laid out as a storefront with a small amount of storage and restroom in the back.
±2,400 SF

Unit 1304 Dry retail corner space. Most recently this space was used as a dry cleaner and is currently laid out as a storefront with a small amount of storage and restroom in the back.
±2,550 SF

Unit 1300 Dry retail space in move-in ready condition. This space was recently renovated to create an open floor plan with lots of natural light from storefront glass and double doors at the front.
±1,300 SF

Unit 1296 Dry retail space in pristine condition. This space was previously a small personal training studio with gym flooring and mirrors on one side of the premises. There is one ADA compliant restroom.
±1,550 SF

UPCOMING Dry retail end cap space with 60 ft of showroom frontage on Federal Hwy. Excellent natural light and incredible visibility from Federal Hwy in both directions.
±4,500-5,900 SF



(954) 372 -7280



info@levelrealty.com



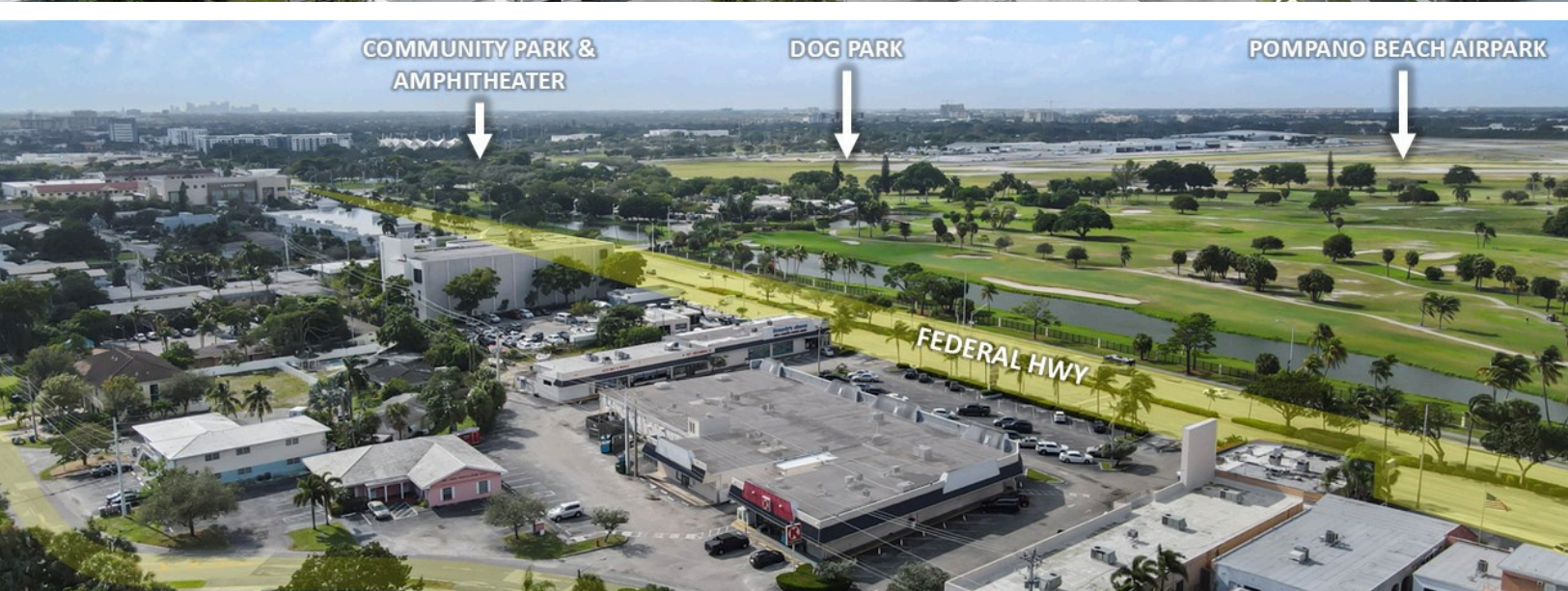
3101 N Federal Hwy, Ste 502
Oakland Park, FL 33306



PROPERTY LOCATION



1290-1340 N FEDERAL HWY, POMPANO BEACH 33062



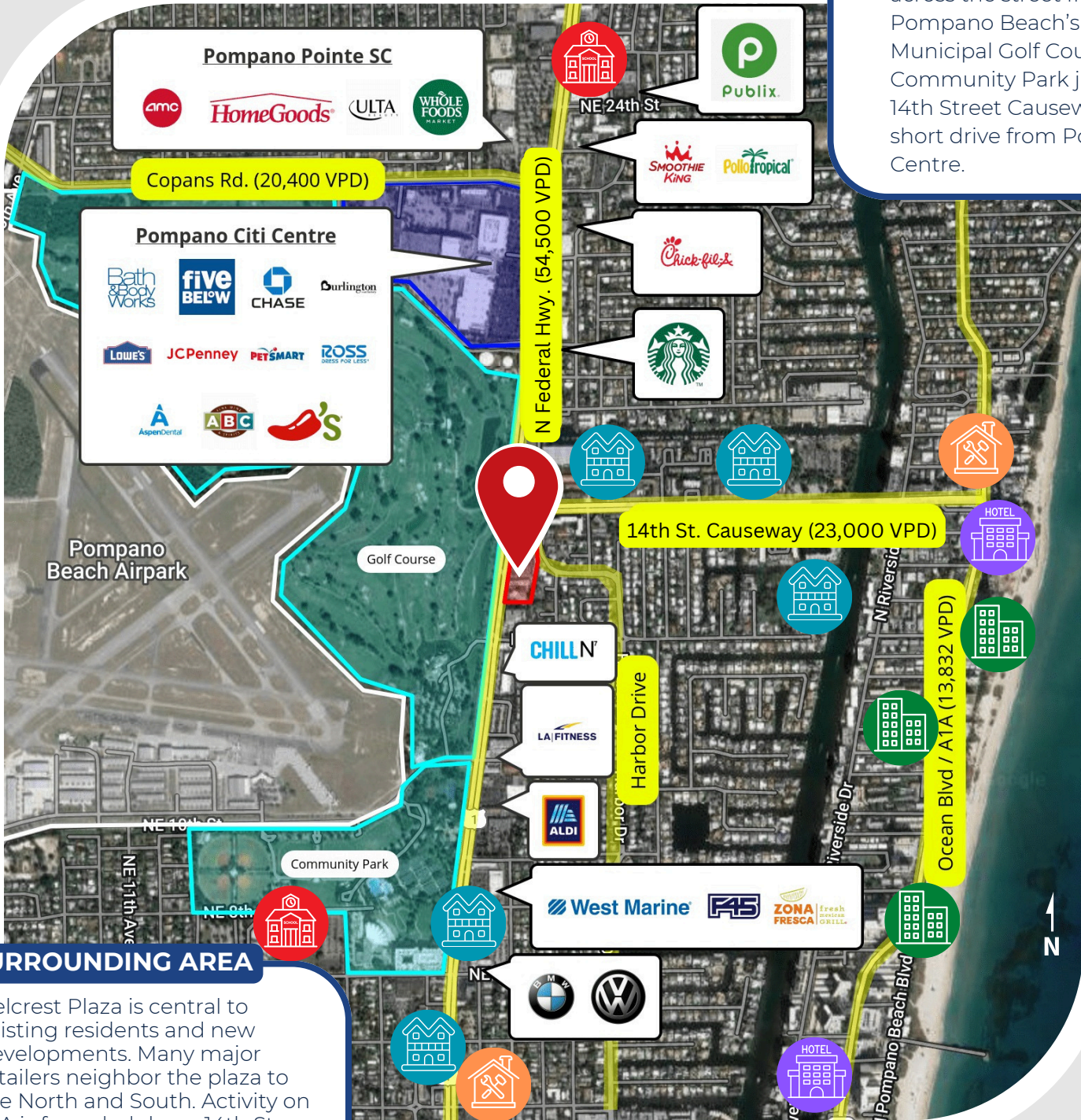
PROPERTY LOCATION

1290-1340 N FEDERAL HWY, POMPANO BEACH 33062



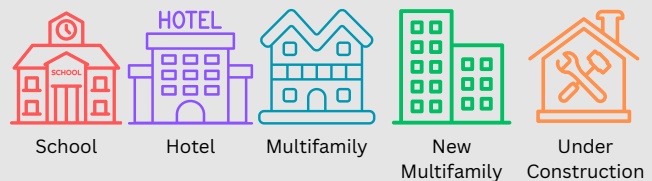
LOCATION

Belcrest Plaza sits on N Federal Highway with 450' of frontage across the street from Pompano Beach's Airpark, Municipal Golf Course, and Community Park just south of 14th Street Causeway and a short drive from Pompano Citi Centre.



SURROUNDING AREA

Belcrest Plaza is central to existing residents and new developments. Many major retailers neighbor the plaza to the North and South. Activity on A1A is funneled down 14th St. Causeway directly to Belcrest. The plaza is surrounded by several new construction and newly construction multifamily projects.



SURROUNDING AREA



1290-1340 N FEDERAL HWY, POMPANO BEACH 33062



(954) 372 -7280



info@levelrealty.com



3101 N Federal Hwy, Ste 502 Fort Lauderdale, FL 33306

COMING RENOVATIONS



1290-1340 N FEDERAL HWY, POMPADNO BEACH 33062



(954) 372 -7280



info@levelrealty.com



3101 N Federal Hwy, Ste 502 Fort Lauderdale, FL 33306