

# FOR LEASE



**5209 W VILLAGE PARKWAY | VILLAGE ON THE CREEKS, ROGERS, AR**

Village on the Creeks is the largest garden office park in Northwest Arkansas. It houses office, retail, restaurant, and medical tenants and enhances quality of life by offering a walking trail on Razorback Greenway and a lake with beautiful views. This property offers two full floors with 32 total offices, 2 file rooms, 2 conference rooms, and a breakroom. See full list on back.



**1st Floor: 6,922 SF  
2nd Floor: 4,140 SF  
11,062 SF Total**



**Two Full Floors  
32 Total Offices  
2 Conference Rooms  
2 File Rooms, Breakroom**



**Direct access to  
Razorback Greenway  
and walking trails in a  
beautiful setting**



**Quick and easy  
access to  
Interstate 49**

**\$20.00 PSF  
NNN**



**DEVEREUX  
GROUP**

**PAT MORRISON  
EXECUTIVE BROKER**

**5204 W. VILLAGE PKWY | SUITE 9  
ROGERS, AR 72758  
P. 479-464-4292  
C. 479-936-4200  
PatMorrison@dvrxgroup.com**

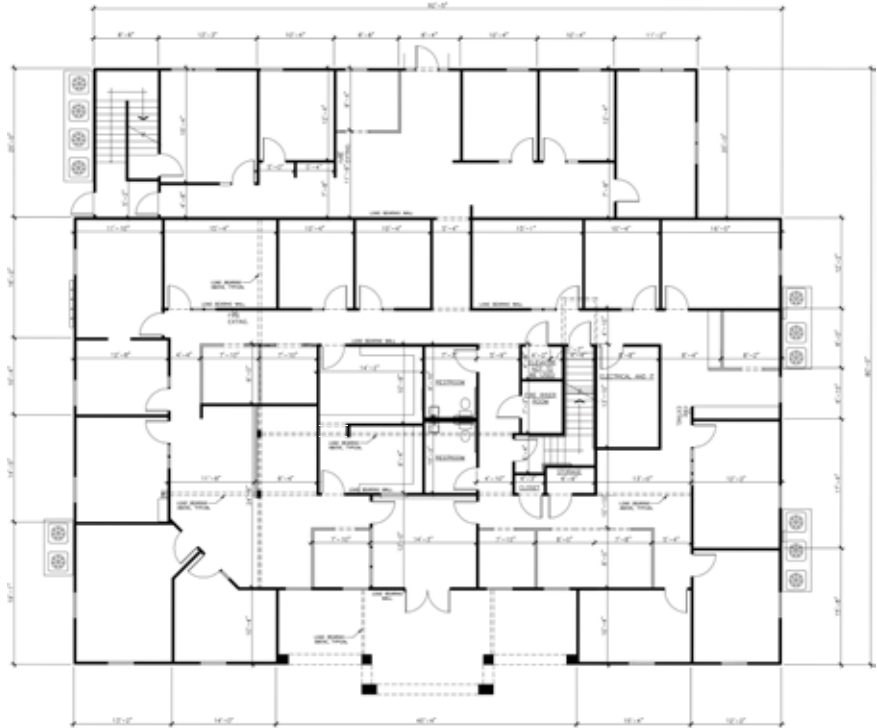
# FLOOR PLAN

**5209 W Village Parkway**

**•11,062 TOTAL SF**

**First Floor, 6,922 SF**

- 21 Offices
- Conference Room
- 2 File Rooms
- 2 Restrooms



**Second Floor, 4,140 SF**

- 11 Offices
- Conference Room
- Breakroom
- Restroom



**PAT MORRISON**  
**EXECUTIVE BROKER**

**5204 W. VILLAGE PKWY | SUITE 9**  
**ROGERS, AR 72758**  
**P. 479-464-4292**  
**C. 479-936-4200**  
**PatMorrison@dvrxgroup.com**



**DEVEREUX**  
**GROUP**





**PAT MORRISON**  
EXECUTIVE BROKER

5204 W. VILLAGE PKWY | SUITE 9  
ROGERS, AR 72758  
P. 479-464-4292  
C. 479-936-4200  
PatMorrison@dvrxgroup.com

