

FOR LEASE

14101 – 14141 US Hwy 290 W

Industrial | Office | Flex | Austin, TX 78737

partners



IRULIAN DABBS
VICE PRESIDENT

tel 512.422.8928

irulian.dabbs@partnersrealestate.com

The information contained herein has been given to us by the owner of the property or other sources we deem reliable, we have no reason to doubt its accuracy, but we do not guarantee it. All information should be verified prior to purchase or lease. © 2024 Partners . All rights reserved.



LEASE RATE

CALL FOR PRICING

LOCATION OVERVIEW

East-bound side of Highway 290 West with great visibility and frontage. Just 12 minutes from the Y at Oak Hill, and conveniently situated between Belterra and Dripping Springs.

PROPERTY DESCRIPTION

110,000 SF of Condo-style office buildings and flex/warehouses; 100% HVAC warehouses on 14.49 acres, with abundant greenery and ample parking.

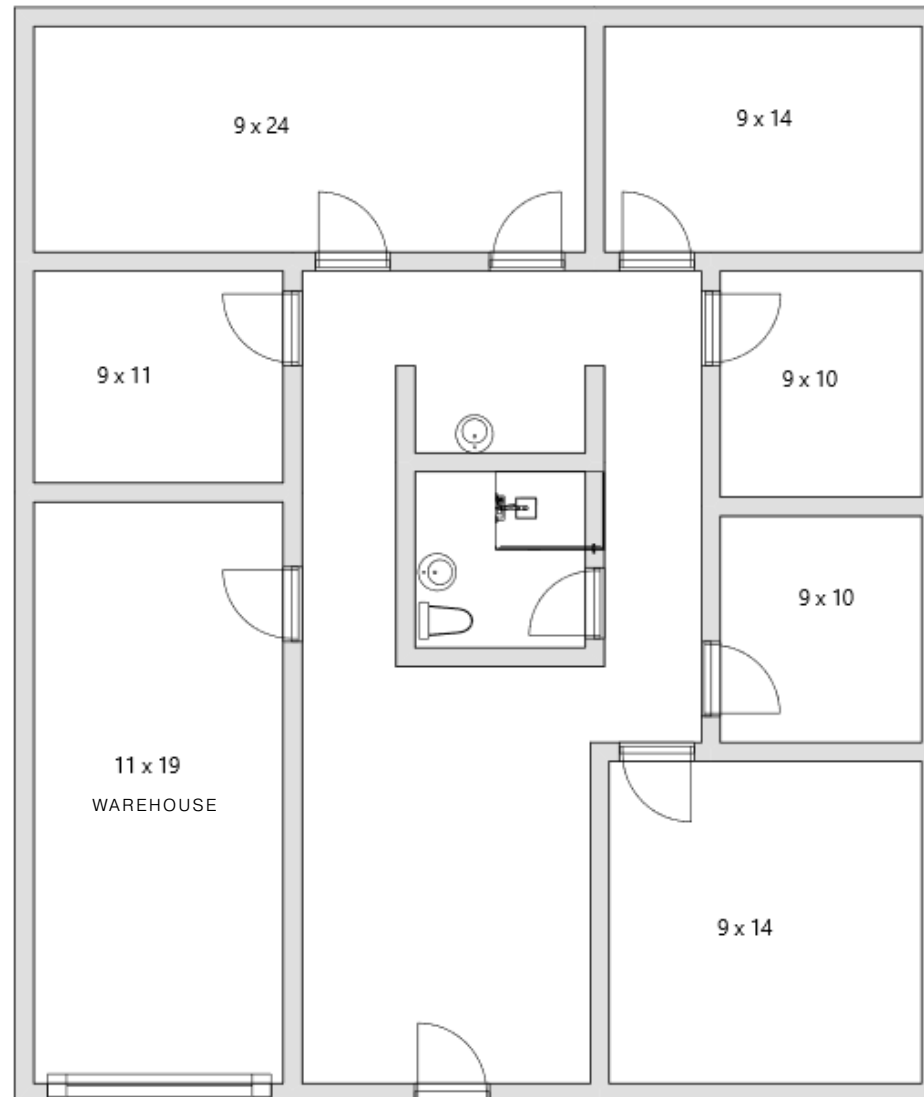
SPACES

BUILDING 400C	Office building with approx 300 SF conditioned warehouse	1,600 SF
BUILDING 600	Free-standing office building	3,520 SF
BUILDING 900A	Flex Office/Warehouse	1,600 SF
BUILDING 1100	Free-standing office building	7,125 SF
BUILDING 1400A	2nd floor office	2,572 SF
BUILDING 1400B	2nd floor office	2,447 SF
BUILDING 1900B	Office Space	2,300 SF

14101 – 14141 US Hwy 290 W

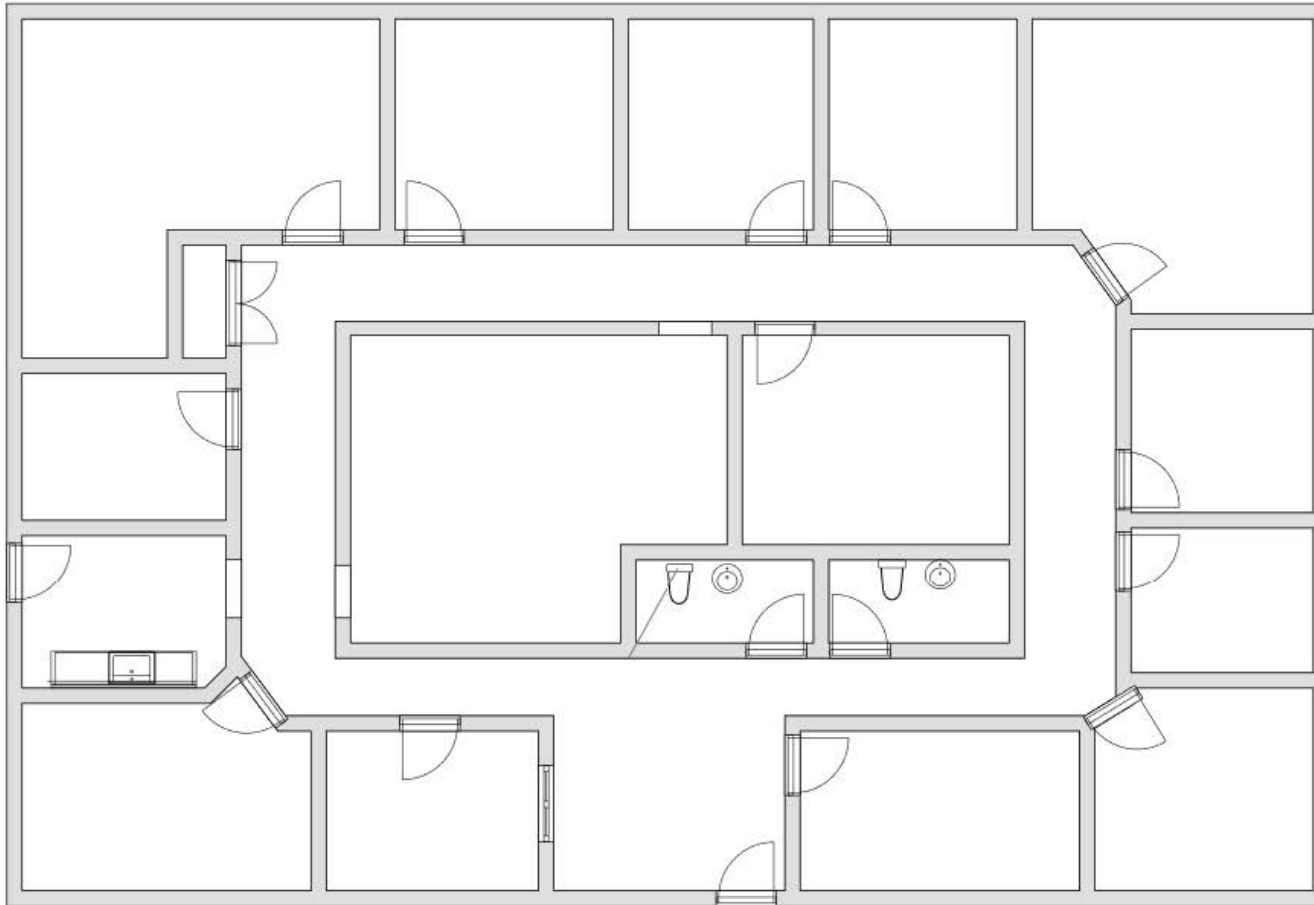
partners



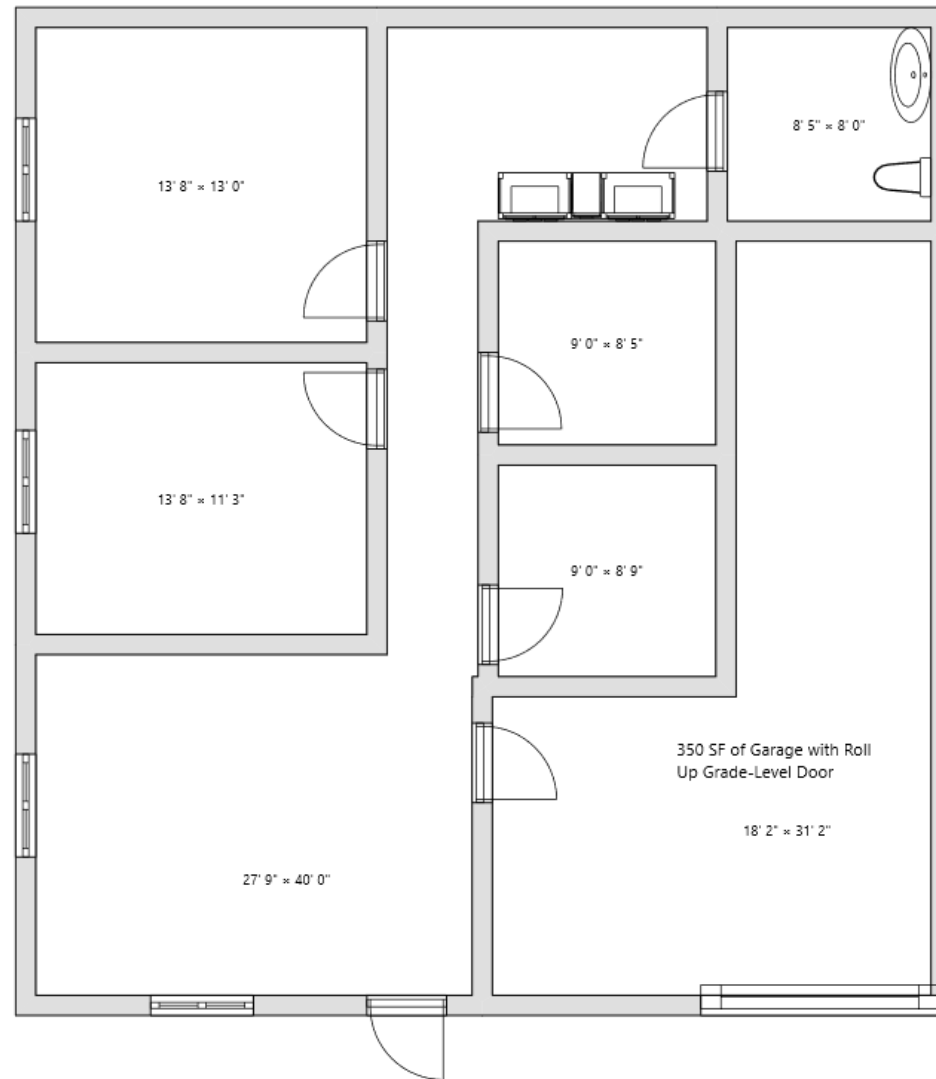


BUILDING 400C - 1,600 SF

SIZES AND DIMENSIONS ARE APPROXIMATE, ACTUAL MAY VARY.



BUILDING 600 - 3,520 SF
SIZES AND DIMENSIONS ARE
APPROXIMATE, ACTUAL MAY VARY.



BUILDING 900A - 1,600 SF

SIZES AND DIMENSIONS ARE APPROXIMATE, ACTUAL MAY VARY.



BUILDING 1400A - 2,572 SF

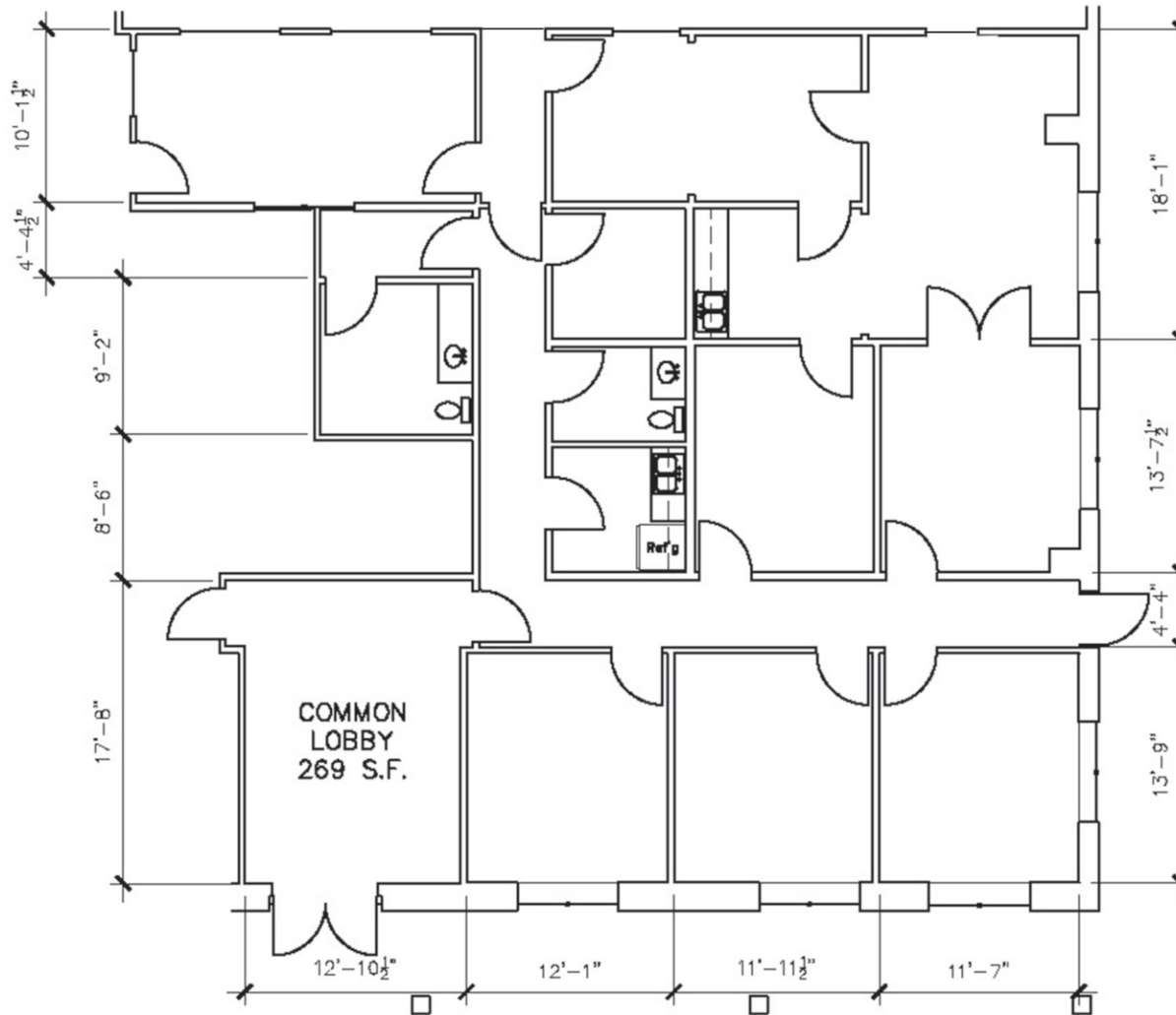
SIZES AND DIMENSIONS ARE APPROXIMATE, ACTUAL MAY VARY.

Suite 1400B
2,447 SF



BUILDING 1400B - 2,447 SF

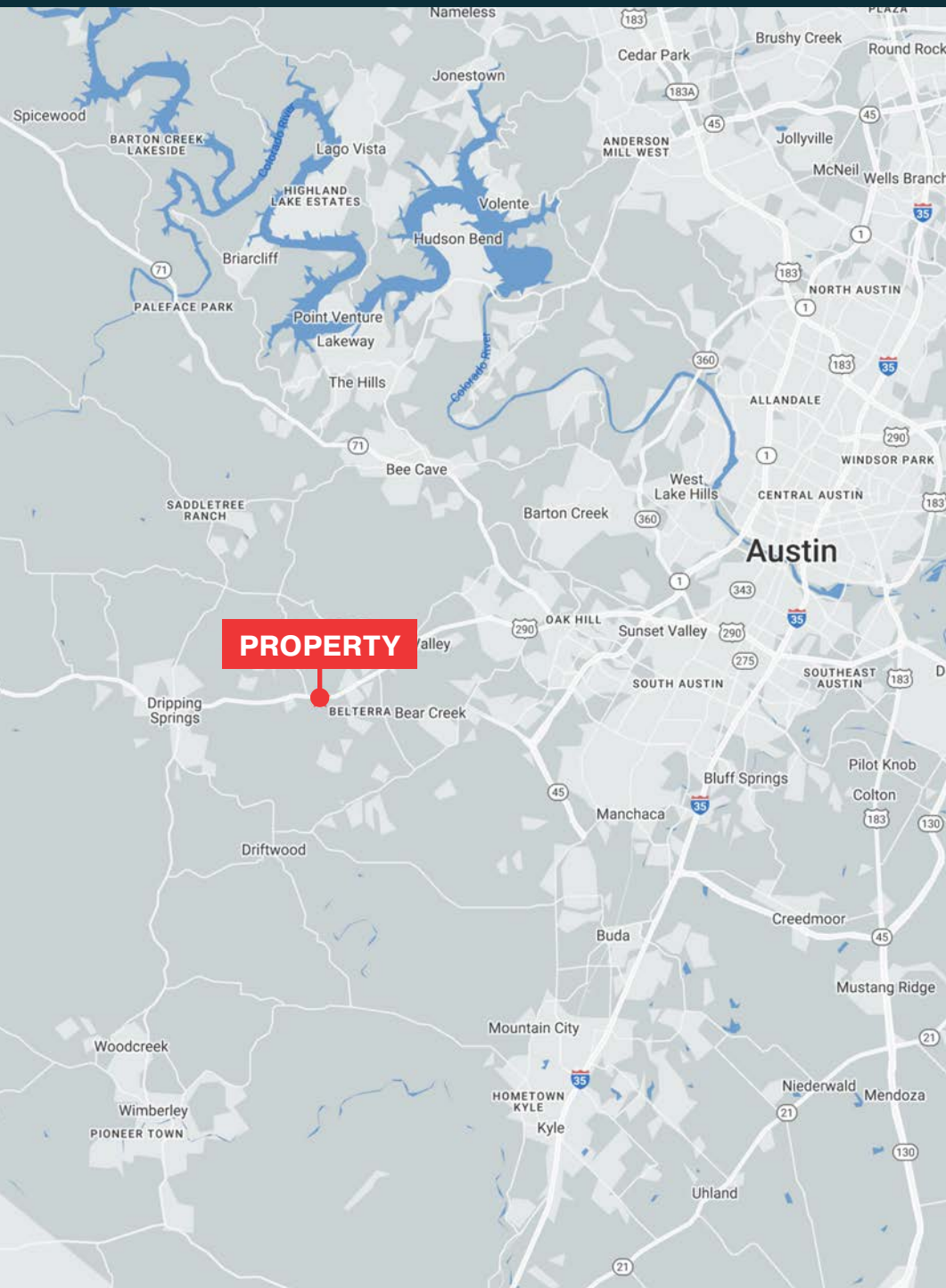
SIZES AND DIMENSIONS ARE APPROXIMATE, ACTUAL MAY VARY.



BUILDING 1900B - 2,300 SF

SIZES AND DIMENSIONS ARE APPROXIMATE, ACTUAL MAY VARY.

14101 – 14141 US Hwy 290 W



<i>POPULATION</i>	1 MILE	3 MILES	5 MILES
2023 Population	2,149	20,137	31,259
2028 Population Projection	2,434	22,925	35,360

<i>HOUSEHOLDS</i>	1 MILE	3 MILES	5 MILES
2023 Households	769	7,155	11,368
Annual Growth 2023-2028	2.8%	2.9%	2.7%

<i>HOUSEHOLD INCOME</i>	1 MILE	3 MILES	5 MILES
Avg Household Income	\$157,250	\$162,146	\$165,909

<i>DAYTIME EMPLOYMENT</i>	1 MILE	3 MILES	5 MILES
Employees	1,267	3,775	7,800
Businesses	180	639	1,210

Source: Costar

partners

AUSTIN
+1 512 580 6025

901 South MoPac Expressway
Building 1, Suite 550
Austin, TX 78746

HOUSTON - HQ
+ 713 629 0500

1360 Post Oak Blvd, Suite 1900
Houston, TX 77056

SAN ANTONIO
+1 210 446 3655
112 E. Pecan, Suite 1515
San Antonio, TX 78205

DALLAS - FT WORTH
+1 214 550 2990
1717 McKinney Ave, Suite 1480
Dallas, TX 75202

ATLANTA
+1 404 595 0500
999 Peachtree Rd, Suite 850
Atlanta, GA 30309

PARTNERSREALESTATE.COM



Information About Brokerage Services

Texas law requires all real estate license holders to give the following information about brokerage services to prospective buyers, tenants, sellers and landlords.

11-2-2015



TYPES OF REAL ESTATE LICENSE HOLDERS:

- A **BROKER** is responsible for all brokerage activities, including acts performed by sales agents sponsored by the broker.
- A **SALES AGENT** must be sponsored by a broker and works with clients on behalf of the broker.

A BROKER'S MINIMUM DUTIES REQUIRED BY LAW (A client is the person or party that the broker represents):

- Put the interests of the client above all others, including the broker's own interests;
- Inform the client of any material information about the property or transaction received by the broker;
- Answer the client's questions and present any offer to or counter-offer from the client; and
- Treat all parties to a real estate transaction honestly and fairly.

A LICENSE HOLDER CAN REPRESENT A PARTY IN A REAL ESTATE TRANSACTION:

AS AGENT FOR OWNER (SELLER/LANDLORD): The broker becomes the property owner's agent through an agreement with the owner, usually in a written listing to sell or property management agreement. An owner's agent must perform the broker's minimum duties above and must inform the owner of any material information about the property or transaction known by the agent, including information disclosed to the agent or subagent by the buyer or buyer's agent.

AS AGENT FOR BUYER/TENANT: The broker becomes the buyer/tenant's agent by agreeing to represent the buyer, usually through a written representation agreement. A buyer's agent must perform the broker's minimum duties above and must inform the buyer of any material information about the property or transaction known by the agent, including information disclosed to the agent by the seller or seller's agent.

AS AGENT FOR BOTH - INTERMEDIARY: To act as an intermediary between the parties the broker must first obtain the written agreement of *each party* to the transaction. The written agreement must state who will pay the broker and, in conspicuous bold or underlined print, set forth the broker's obligations as an intermediary. A broker who acts as an intermediary:

- Must treat all parties to the transaction impartially and fairly;
- May, with the parties' written consent, appoint a different license holder associated with the broker to each party (owner and buyer) to communicate with, provide opinions and advice to, and carry out the instructions of each party to the transaction.
- Must not, unless specifically authorized in writing to do so by the party, disclose:
 - that the owner will accept a price less than the written asking price;
 - that the buyer/tenant will pay a price greater than the price submitted in a written offer; and
 - any confidential information or any other information that a party specifically instructs the broker in writing not to disclose, unless required to do so by law.

AS SUBAGENT: A license holder acts as a subagent when aiding a buyer in a transaction without an agreement to represent the buyer. A subagent can assist the buyer but does not represent the buyer and must place the interests of the owner first.

TO AVOID DISPUTES, ALL AGREEMENTS BETWEEN YOU AND A BROKER SHOULD BE IN WRITING AND CLEARLY ESTABLISH:

- The broker's duties and responsibilities to you, and your obligations under the representation agreement.
- Who will pay the broker for services provided to you, when payment will be made and how the payment will be calculated.

LICENSE HOLDER CONTACT INFORMATION: This notice is being provided for information purposes. It does not create an obligation for you to use the broker's services. Please acknowledge receipt of this notice below and retain a copy for your records.

PCR Brokerage Austin, LLC	9003950	melissa.kennedy@partnersrealestate.com	713-620-0500
Licensed Broker /Broker Firm Name or Primary Assumed Business Name	License No.	Email	Phone
Jon Silberman	389162	jon.silberman@partnersrealestate.com	713-620-0500
Designated Broker of Firm	License No.	Email	Phone
Scott Lunine	787298	scott.lunine@partnersrealestate.com	713 629 0500
Licensed Supervisor of Sales Agent/ Associate	License No.	Email	Phone
Irulian Dabbs	686473	irulian.dabbs@partnersrealestate.com	512-601-8121
Sales Agent/Associate's Name	License No.	Email	Phone

Buyer/Tenant/Seller/Landlord Initials

Date

Regulated by the Texas Real Estate Commission

Information available at www.trec.texas.gov

IABS 1-0