



57,416 SF FOR LEASE

18737 S REYES AVENUE

RANCHO DOMINGUEZ, CA

CONTACT INFORMATION:

BRIAN HELD

Lic 01100518

+1 310 363 4825

brian.held@cbre.com

ROBERT FLORES

Lic 01848000

+1 310 363 4826

rob.flores@cbre.com

CBRE

PROPERTY HIGHLIGHTS



\$85,550 Per Month (\$1.49 PSF) Gross



±57,416 SF Distribution/Manufacturing Building



±100,580 SF Parcel (2.31 Acres) with Private Fenced Yard Area



±5,000 SF of Well Appointed Offices



20' Minimum Clearance



Six (6) Dock High Positions and Two (2) Ground Level Doors



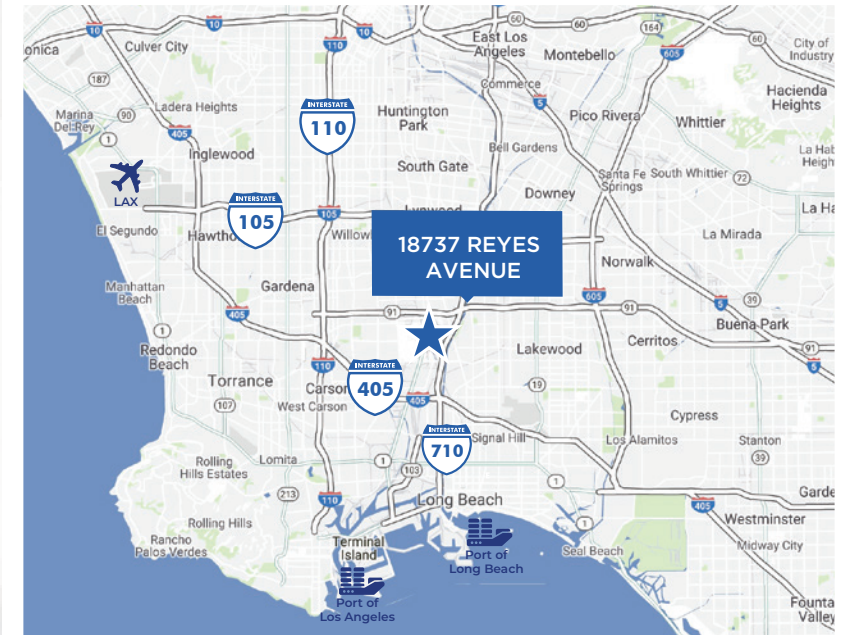
Ideally Located in Unincorporated Los Angeles County



1,400 Amps Via Two Panels



Immediately Adjacent to Alameda Corridor and 710, 91, 110 and 405 Freeways



MILES

Los Angeles
International Airport

11

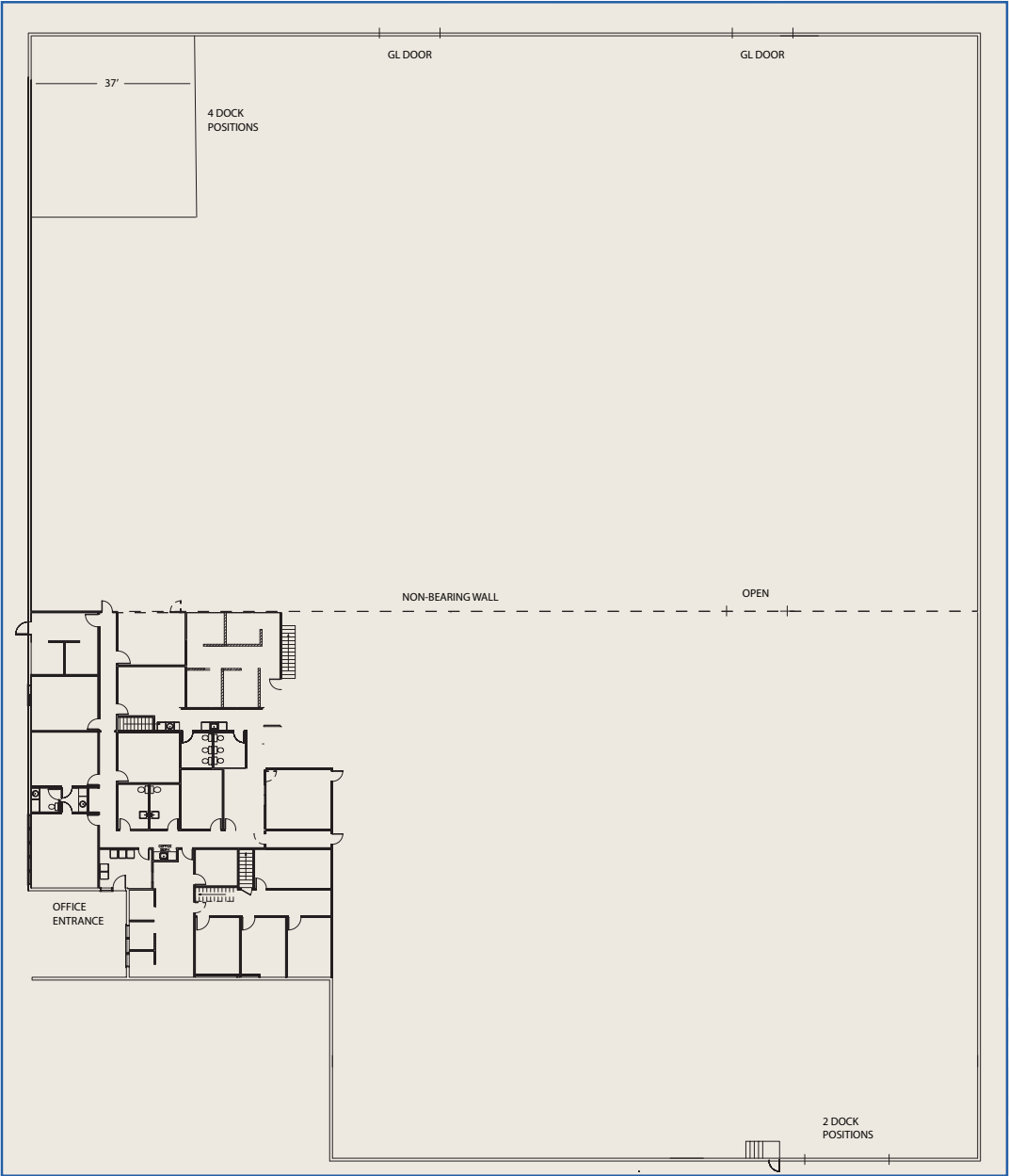
Port of Los Angeles

7.3

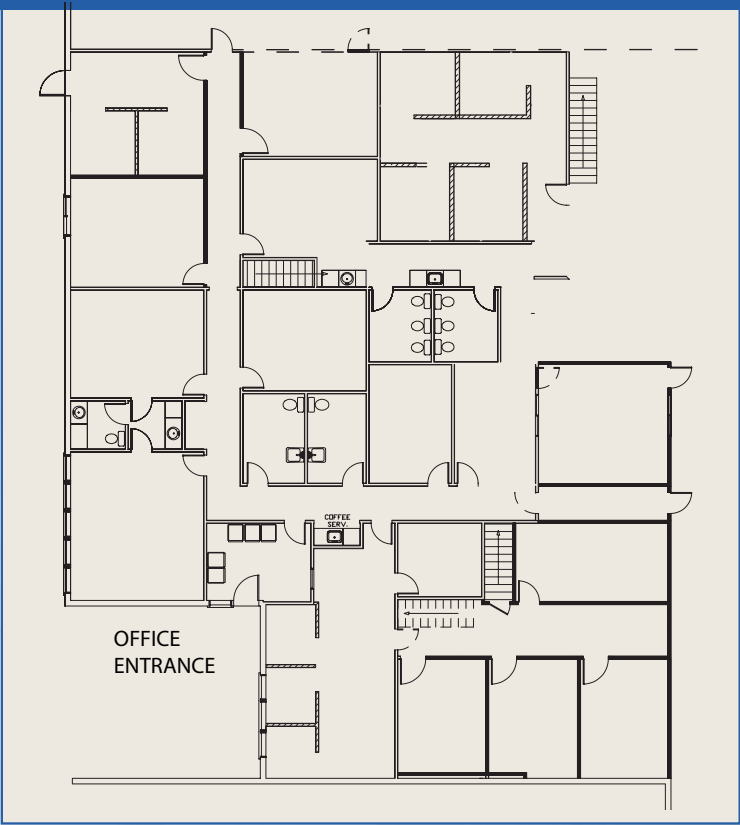
Port of Long Beach

5.6

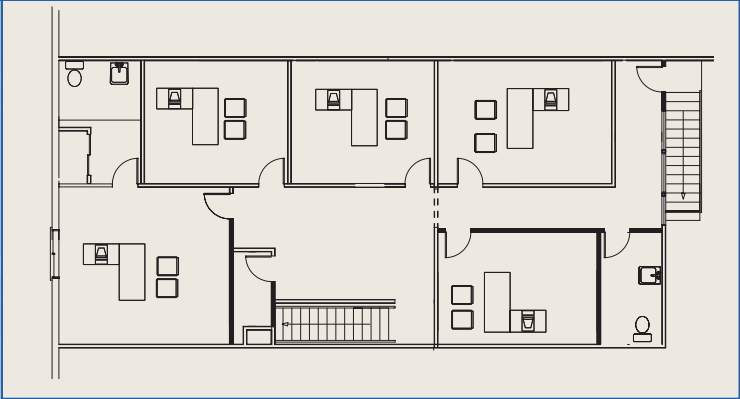
SITE PLAN



FIRST FLOOR OFFICE



SECOND FLOOR OFFICE



18737 S REYES AVENUE RANCHO DOMINGUEZ, CA

CONTACT INFORMATION:

BRIAN HELD

Lic 01100518
+1 310 363 4825
brian.held@cbre.com

ROBERT FLORES

Lic 01848000
+1 310 363 4826
rob.flores@cbre.com

CBRE

© 2023 CBRE, Inc. All rights reserved. This information has been obtained from sources believed reliable but has not been verified for accuracy or completeness. CBRE, Inc. makes no guarantee, representation or warranty and accepts no responsibility or liability as to the accuracy, completeness, or reliability of the information contained herein. You should conduct a careful, independent investigation of the property and verify all information. Any reliance on this information is solely at your own risk. CBRE and the CBRE logo are service marks of CBRE, Inc. All other marks displayed on this document are the property of their respective owners, and the use of such marks does not imply any affiliation with or endorsement of CBRE. Photos herein are the property of their respective owners. Use of these images without the express written consent of the owner is prohibited.

