

# 35 PARKWOOD DRIVE HOPKINTON, MA



**CLASS A OFFICE SPACE OFF I-495**  
**±4,155 - 12,150 SF FOR LEASE**



**VICTOR GALVANI**  
VP of Investment Sales  
508.271.9225  
vgalvani@parsonscre.com

**MATT CUNEO**  
Director- Brokerage  
508.271.9212  
mcuneo@parsonscre.com

**JAY CANNON**  
Advisor  
508.271.9219  
jcannon@parsonscre.com

**NAI PARSONS COMMERCIAL GROUP BOSTON**  
5 Commonwealth Road, Suite 1A  
Natick, MA 01760  
508.820.2700 | [www.ParsonsCRE.com](http://www.ParsonsCRE.com)

DISCLAIMER: All rights reserved. This information has been obtained from sources believed reliable, but has not been verified for accuracy or completeness. You should conduct a careful, independent investigation of the property and verify all information. Any reliance on this information is solely at your own risk.



# 35 PARKWOOD DRIVE HOPKINTON, MA

NAI | Parsons Commercial Group | Boston is pleased to present the opportunity to lease Class A office space at 35 Parkwood Drive in Hopkinton, Massachusetts. Currently,  $\pm 4,155$  to  $12,150$  square feet is available across the first and second floors, offering flexible options to accommodate a range of business needs.

The building is located in the Hopkinton Corporate Center and was formerly the EMC World Headquarters. Renovated in 2018, the property features a main lobby, large conference rooms, outdoor patio space, common areas with modern finishes, a fitness center with showers, and service kiosks.

35 Parkwood is located directly off 495, and one exit South of the Mass Pike. Area amenities in close distance include Dunkin Donuts, Starbucks, 110 Grill, Cumberland Farms, Verizon and more.

## CURRENT AVAILABILITY:

### FLOOR 1:

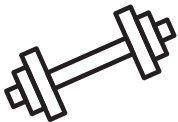
Suite 1:  $\pm 4,155$  SF

Suite 2:  $\pm 6,144$  SF

### FLOOR 2:

Suite 1:  $\pm 12,150$  SF

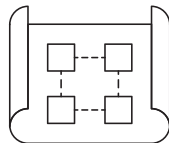
**1** FITNESS CENTER  
WITH SHOWERS



ELEVATORS

**4**

**2018**  
YEAR RENOVATED



**.5**  
MILES TO  
ROUTE 495  
VIA EXIT 21

**$\pm 12,150$  RSF**

OFFICE SPACE AVAILABLE

**3.0** PER 1,000 SF  
PARKING RATIO



# FLOOR PLANS

±4,155 SF | First Floor



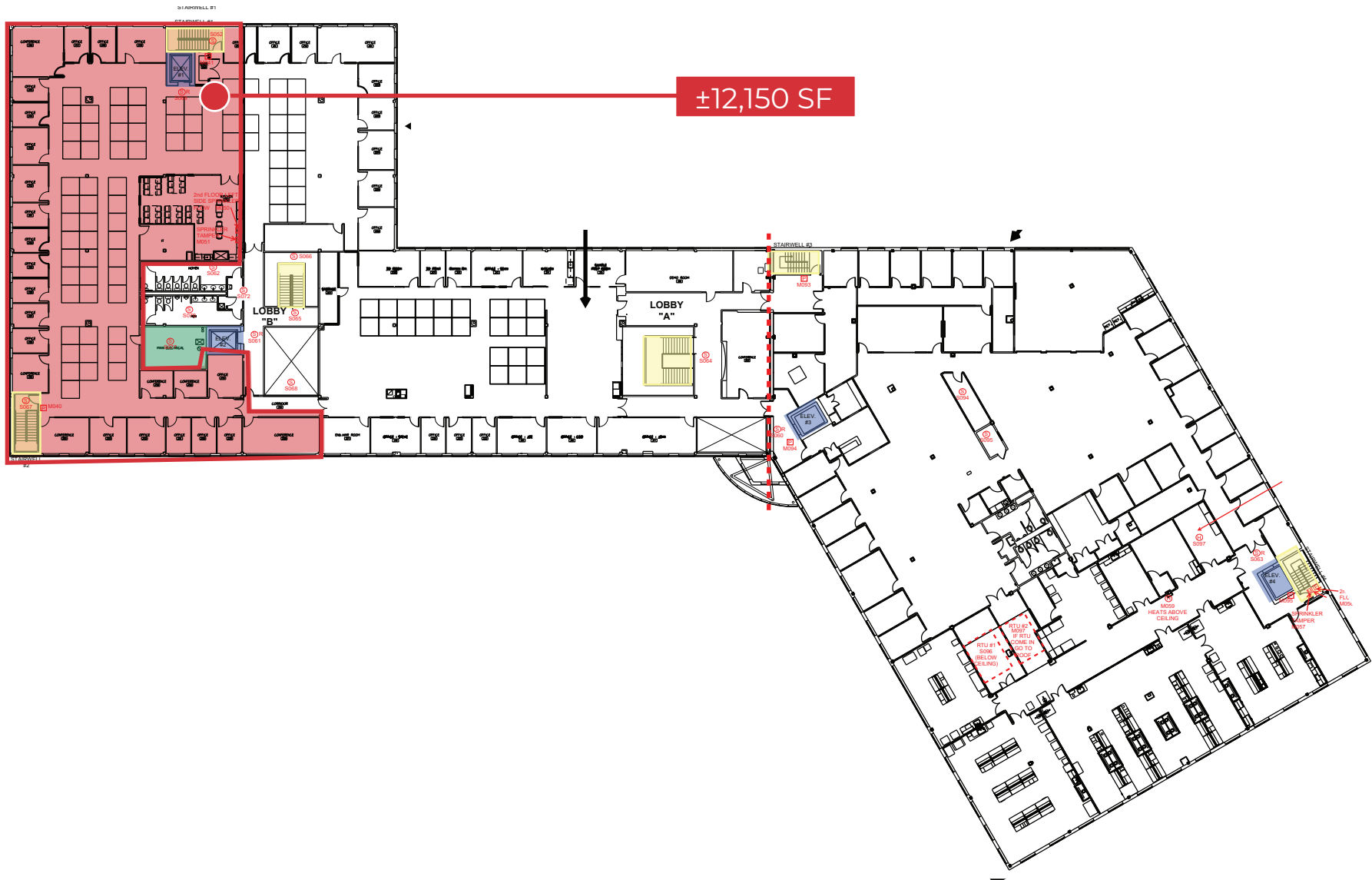
# FLOOR PLANS

±6,144 SF | First Floor



# FLOOR PLANS

±12,150 SF | Second Floor



**35 PARKWOOD DRIVE**  
**HOPKINTON, MA**



**VICTOR GALVANI**  
VP of Investment Sales  
508.271.9225  
vgalvani@parsonscres.com

**MATT CUNEO**  
Director- Brokerage  
508.271.9212  
mcuneo@parsonscres.com

**JAY CANNON**  
Advisor  
508.271.9219  
jcannon@parsonscres.com

**NAI PARSONS COMMERCIAL GROUP BOSTON**  
5 Commonwealth Road, Suite 1A  
Natick, MA 01760  
508.820.2700 | [www.ParsonsCRE.com](http://www.ParsonsCRE.com)