

**FOR LEASE**

# OFFICE SPACE AVAILABLE

830 Twining Road | Dresher, PA 19025

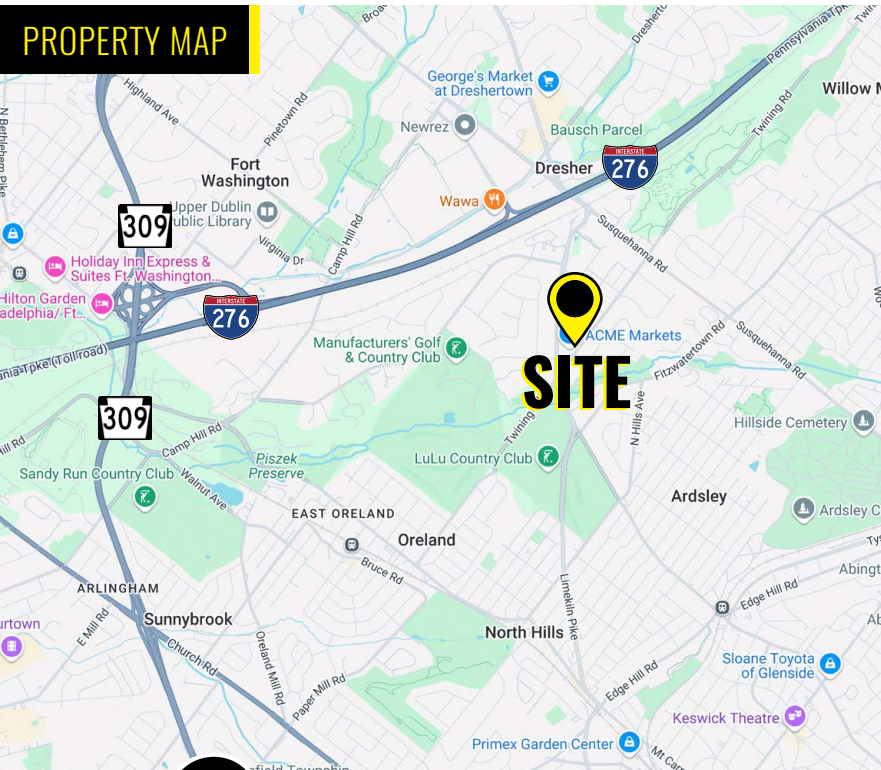
**\$18 PSF NNN**

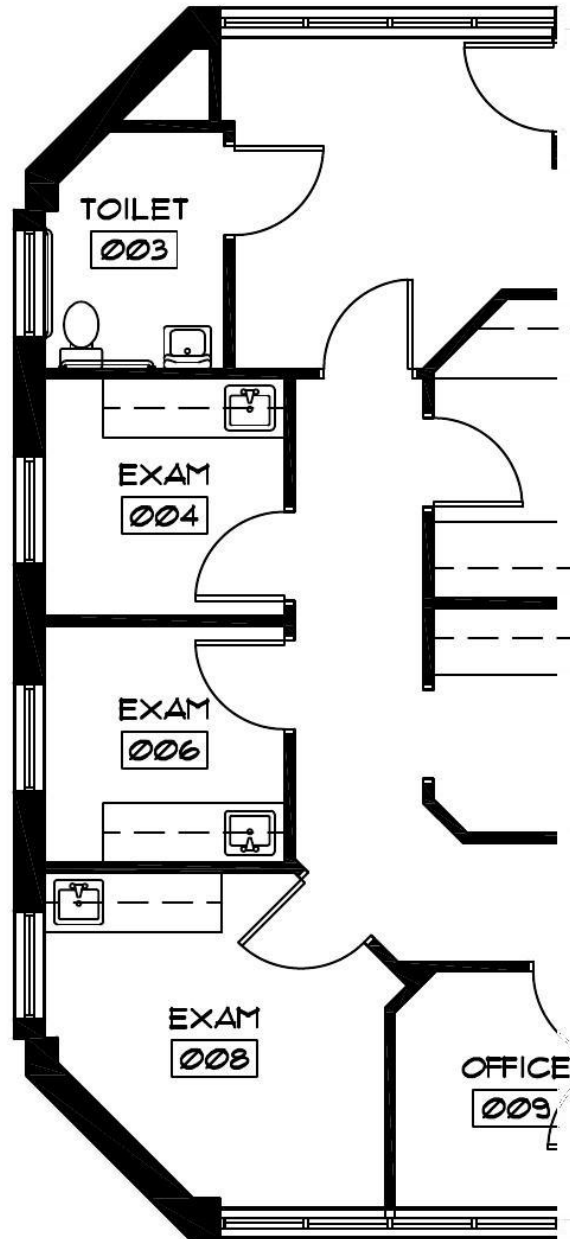
## PROPERTY FEATURES / HIGHLIGHTS

- ±800 SF Medical Office Available For Lease
- 3 exam rooms, 1 private office, restroom & reception area
- Situated on Twining Road in Dresher Professional Center
- Conveniently located near the Pennsylvania Turnpike (I-276), Route 309, and Route 152. Excellent regional connectivity.
- Ample parking with 43 spaces
- Located near shopping hubs such as Fairway Shopping Center, Dresher Plaza and Willow Grove Park Mall



## PROPERTY MAP





±800 SF MEDICAL  
OFFICE SPACE



# ABOUT ZOMMICK MCMAHON COMMERCIAL REAL ESTATE

Zommick McMahon Commercial Real Estate, Inc. has been a Metro Philadelphia Area staple since its inception in 1949. The Company was founded by Joseph Zommick, and continues today with Ryan McMahon and his highly experienced staff. We are much more than just a real estate brokerage firm – we are a team of experienced, consummate professionals who are dedicated to superb customer service. Partner with us for support from some of the top commercial brokers in Pennsylvania, New Jersey and Delaware.

## SOME OF OUR SATISFIED CLIENTS



IRON HILL  
BREWERY & RESTAURANT

