

FOR SUBLEASE

PARK 288

2710 REED ROAD | SUITE 170
HOUSTON, TX 77051



**CLASS "A" SPACE
OFFICE/WAREHOUSE**



SAM CHANG
SENIOR VICE PRESIDENT
(713) 386-1070 Direct
samchang@henrysmiller.com

HENRY S. MILLER BROKERAGE | HOUSTON
9434 Katy Fwy, Suite 180
Houston, Texas 77055
www.henrysmiller.com

PROPERTY HIGHLIGHTS

PARK 288
2710 REED RD | SUITE 170
HOUSTON, TX 77051

SUBLEASE SPACE AVAILABLE

- 8,176 SF Class "A"
 - Office: 1,725 SF | Warehouse: 6,451 SF
- Base Rent: **\$0.88 PSF/Month**
- Expiration: 7/31/2026
- Excellent visibility from SH 288 and Reed Road
- Easy access to Loop 610 and Beltway 8
- Front park rear load
- 24' Clear heights
- 3 OH loading doors with 2 drive-in ramps
- ESFR Sprinklered
- Individual storefront entry
- 24/7 Access
- 45' x 45' Column spacing



FRONT



WAREHOUSE



122,834 VPD

TRAFFIC COUNT ON
HWY 288



14,470 VPD

TRAFFIC COUNT ON
REED RD



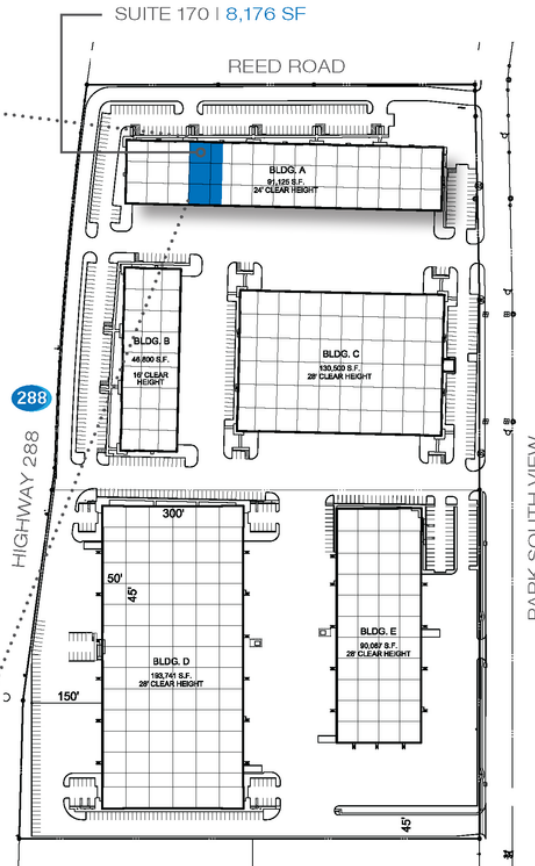
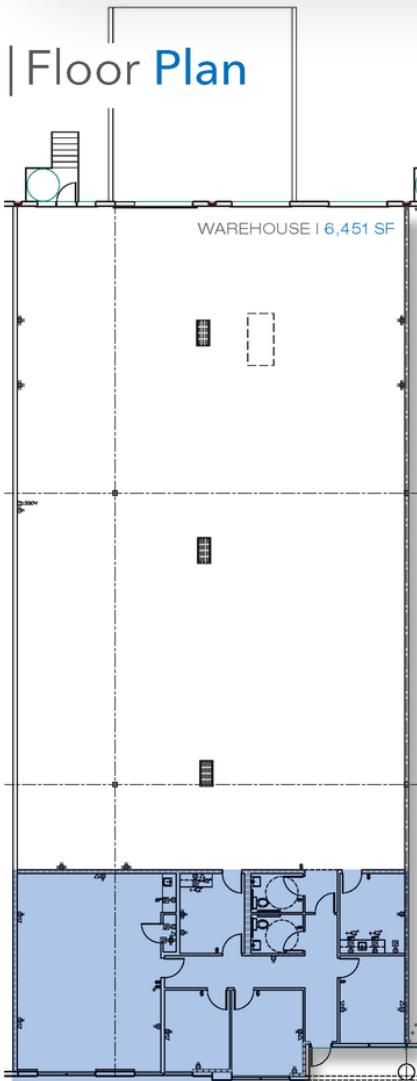
SAM CHANG
SENIOR VICE PRESIDENT
(713) 386-1070 Direct
samchang@henrysmiller.com

HENRY S. MILLER BROKERAGE | HOUSTON
9434 Katy Fwy, Suite 180
Houston, Texas 77055
www.henrysmiller.com

FLOOR PLAN

PARK 288
2710 REED RD | SUITE 170
HOUSTON, TX 77051

Floor Plan

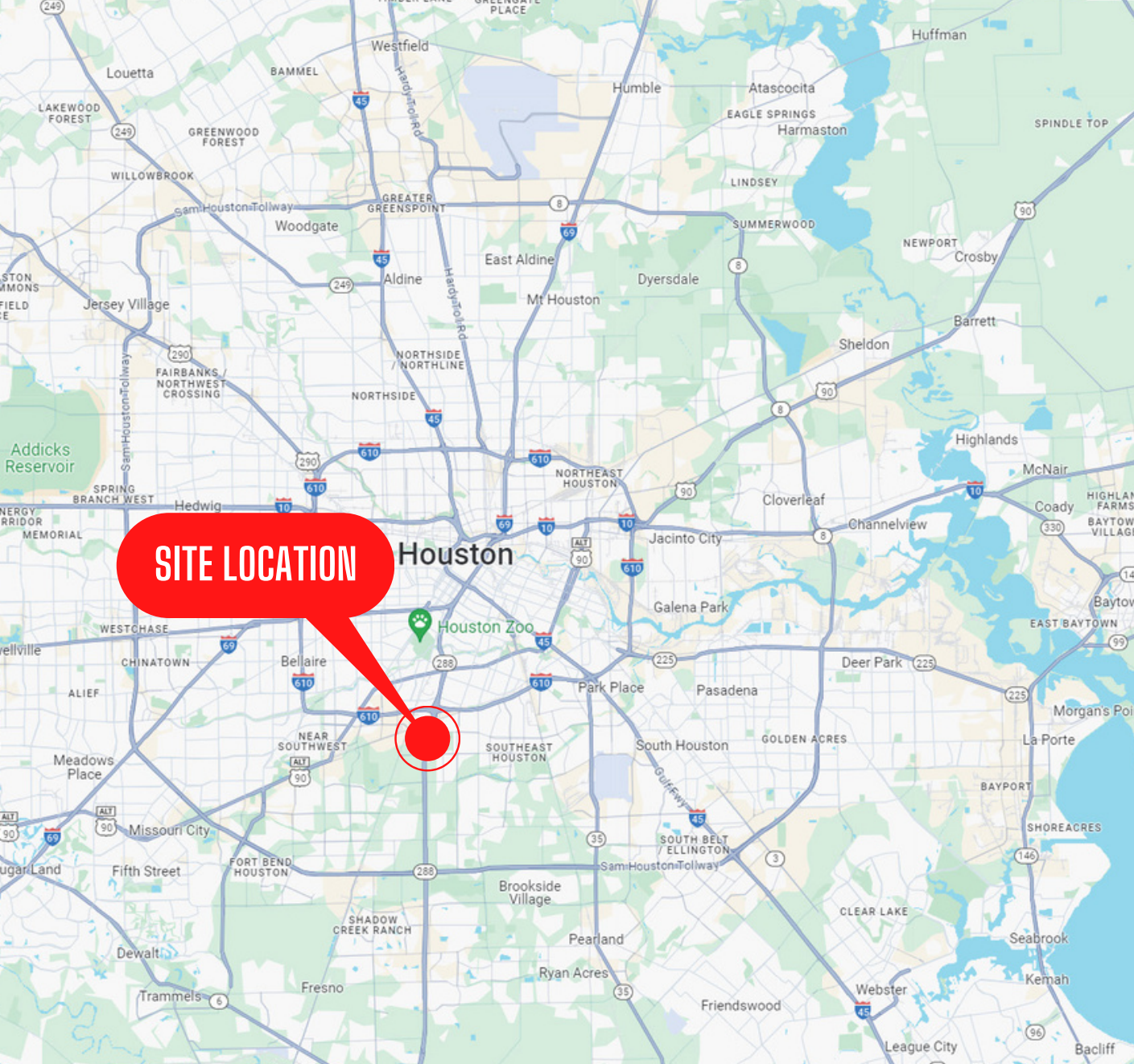


Site Plan



SAM CHANG
SENIOR VICE PRESIDENT
(713) 386-1070 Direct
samchang@henrysmiller.com

HENRY S. MILLER BROKERAGE | HOUSTON
9434 Katy Fwy, Suite 180
Houston, Texas 77055
www.henrysmiller.com



CONTACT OUR TEAM

SAM CHANG
SENIOR VICE PRESIDENT
(713) 386-1070 Direct
sanchang@henrysmiller.com

HENRY S. MILLER BROKERAGE | HOUSTON
9434 Katy Fwy, Suite 180
Houston, Texas 77055
www.henrysmiller.com

NOTICE & DISCLAIMER: The enclosed information is from sources believed to be reliable, but Henry S. Miller Brokerage, LLC has not verified the accuracy of the information. Henry S. Miller Brokerage, LLC makes no guarantee, warranty or representation as to the information, and assumes no responsibility for any error, omission or inaccuracy. The information is subject to the possibility of errors, omissions, changes of condition, including price or rental, or withdrawal without notice. Any projections, assumptions or estimates are for illustrative purposes only. Recipients should conduct their own investigation.