

A photograph of a modern, two-story building with a mix of red brick and large glass windows. A concrete walkway leads towards the entrance, flanked by green shrubs. The building has a balcony on the upper floor with a metal railing. A red rectangular box is superimposed over the center of the image, containing white text. The sky is blue with some clouds, and tree branches are visible in the upper left corner.

1156 Bowman Rd. Unit 100 B
Mt. Pleasant, South Carolina

PROPERTY OVERVIEW. 1156 Bowman Rd. Unit 100 B



SPACE OVERVIEW.

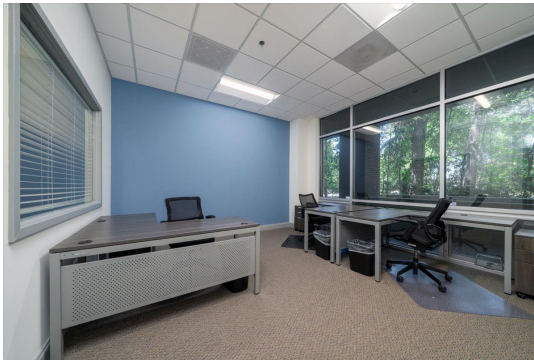
- 2,270 square feet
- Estimated \$8 NNN's
- 1st floor with private wheelchair ramp
- Kitchen
- Breakroom
- Storage

HIGHLIGHTS.

- Supreme connectivity for employees and customers
- Layout allows for flexible configurations
- Located minutes from high end amenities
- Perfect for a wide variety of office, medical or Live/work uses

FLOOR PLAN

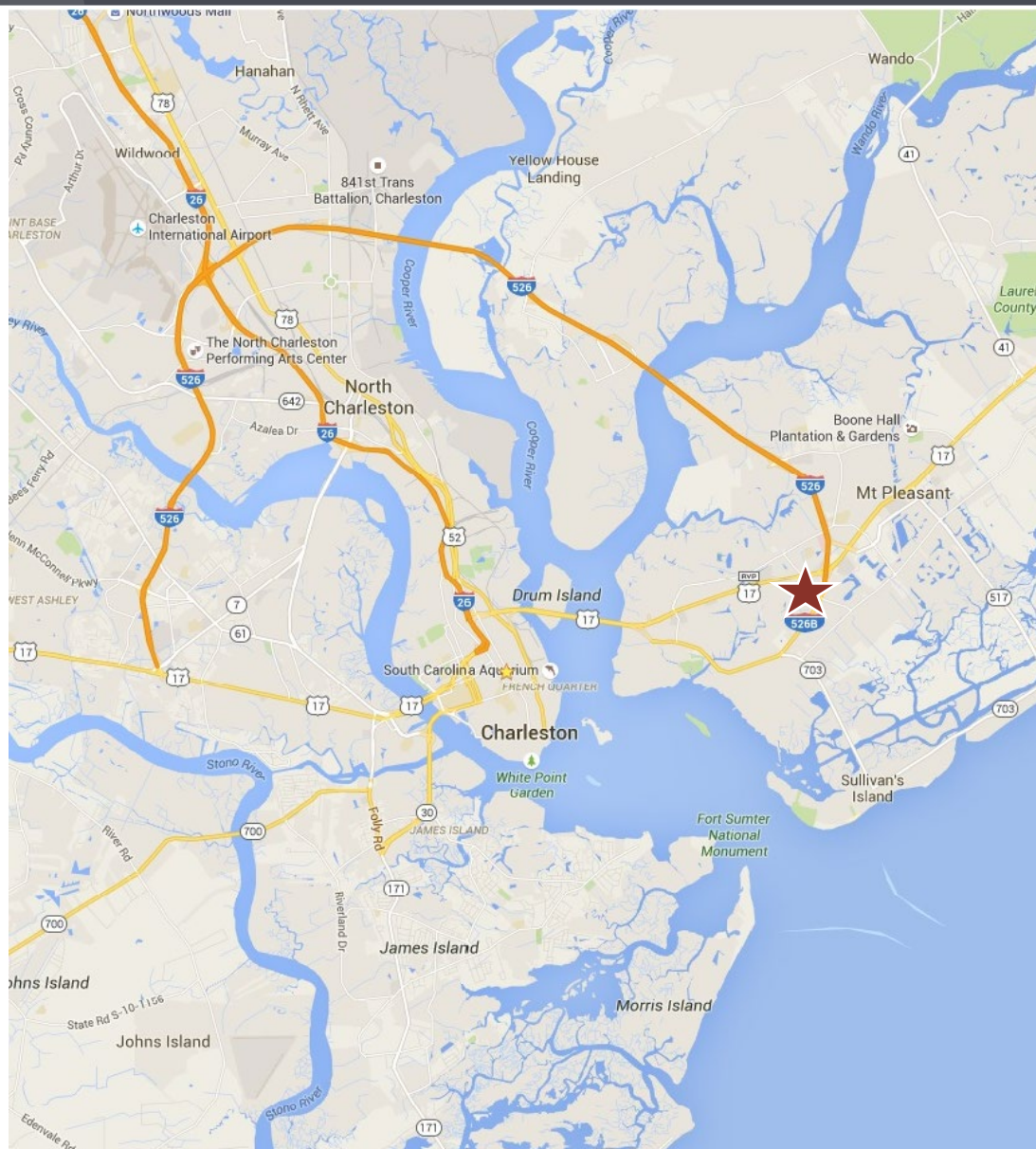




Robert Sullivan, Associate
rsullivan@cctre.com
 843.834.4600

Keith Mayfield, Associate
kmayfield@cctre.com
 843.437.0720

LOCATION. Mt. Pleasant, South Carolina



The iconic southern town of Charleston continues to prove why they were Voted the #1 city in the world by Travel + Leisure. The historic charm of downtown, economic growth, hospitality and over all quality of life are many of the reasons 48 new residents choose the Charleston Tri-County Area*.

The Charleston metro has experienced unprecedented business growth and economic diversification, with both multinational corporations and fast-growing startups taking advantage of our globally competitive business environment.

As of 2015, the Charleston SC Metro Area population is 744,546, growing at 3X the U.S. population average. Charleston has moved up to be the 75th largest U.S. metro by population. It is experiencing a gain of well-educated young talent, adding to the growing labor force at 5X the U.S. average.

*Includes Berkeley, Charleston and Dorchester counties

Source: Charleston Regional Business Alliance



“The city’s resilience, strength, and beauty are just a few of the reasons.”

Travel + Leisure; Why Charleston is the Number One City in North America

Robert Sullivan, Associate
rsullivan@cctre.com
843.834.4600

Keith Mayfield, Associate
kmayfield@cctre.com
843.437.0720