

41600 SIX MILE ROAD
NORTHVILLE TWP., MICHIGAN

HI-TECH FOR SALE OR LEASE
24,000 Square Feet Available



**SIGNATURE
ASSOCIATES**
KNOW SIGNATURE | KNOW RESULTS



PROPERTY FEATURES

- 24,000 square feet available
- 14' - 16' clear height
- (6) grade level doors
- Zoned PROS, Public Recreation
- Ample parking
- Current Northville Township Police Department
- Will need an easement to access baseball fields
- Located on 3.22 acres
- Lease Rate: \$13.50/sq. ft. NNN
- Sale Price: \$2,161,500 (\$90.06/sq. ft.)



For more information, please contact:

STEVE GORDON
(248) 948 0101
sgordon@signatureassociates.com

DAVE GREEN
(248) 948 4184
dgreen@signatureassociates.com

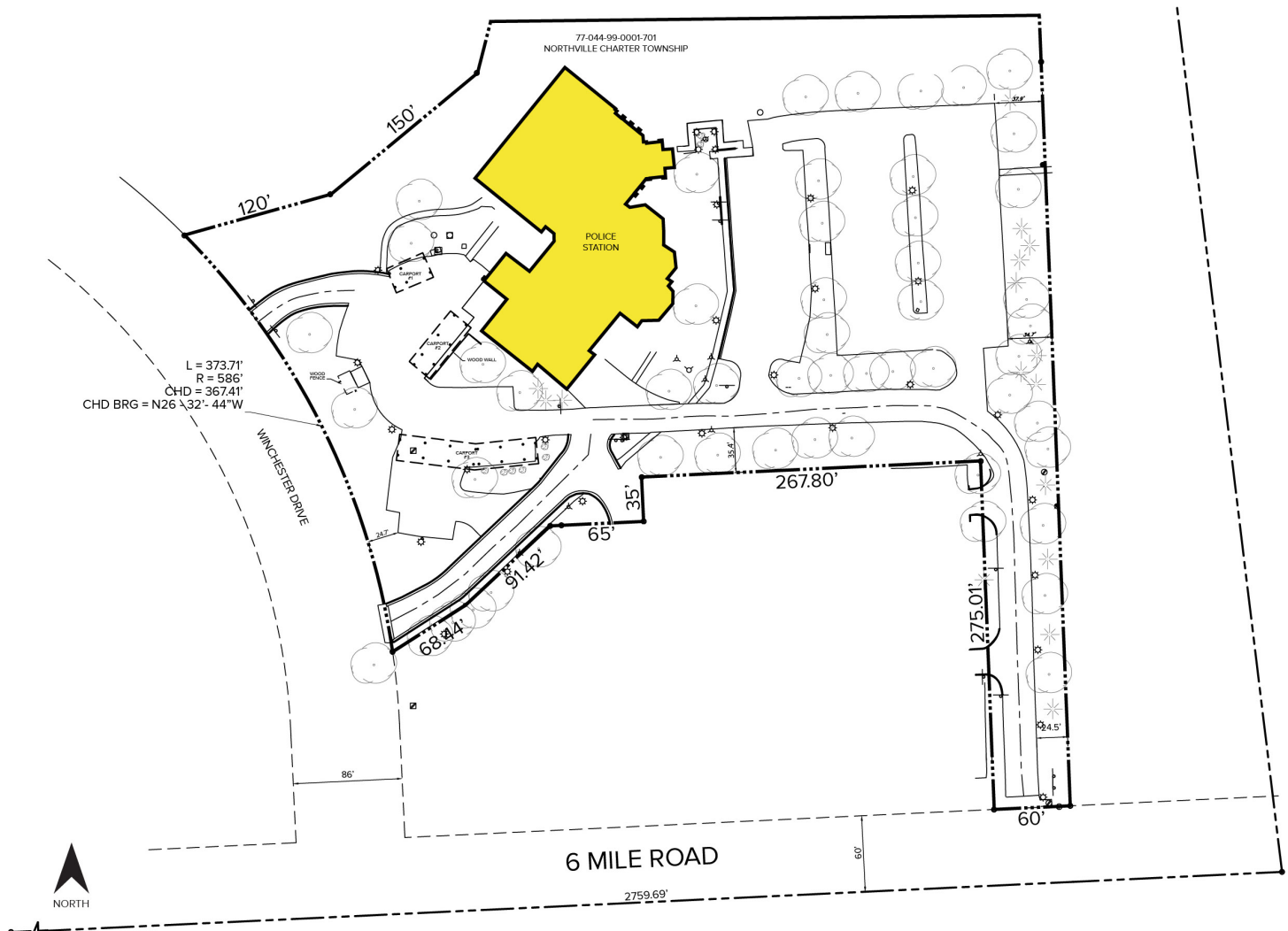
SIGNATURE ASSOCIATES
One Towne Square, Suite 1200
Southfield, MI 48076
www.signatureassociates.com

41600 Six Mile Road – Northville Twp., Michigan

Hi-Tech For Sale or Lease

24,000
Square Feet
AVAILABLE

Site Plan



For more information, please contact:

STEVE GORDON
(248) 948 0101
sgordon@signatureassociates.com

DAVE GREEN
(248) 948 4184
dgreen@signatureassociates.com

SIGNATURE ASSOCIATES
One Towne Square, Suite 1200
Southfield, MI 48076
www.signatureassociates.com

Information is subject to verification and no liability for errors or omissions is assumed. Price is subject to change and listing withdrawal.

24,000
Square Feet
AVAILABLE



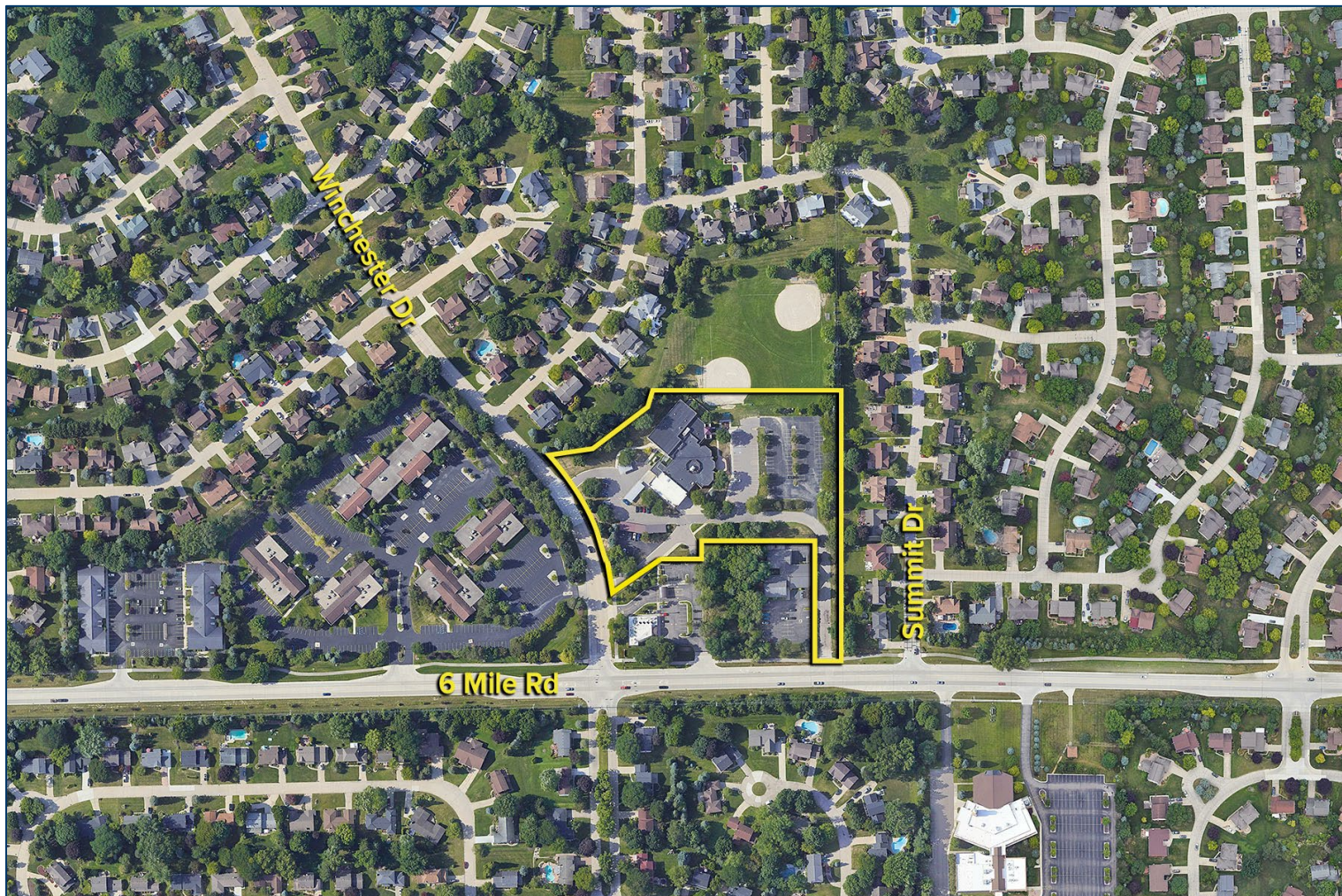
Information is subject to verification and no liability for errors or omissions is assumed. Price is subject to change and listing withdrawal.

41600 Six Mile Road – Northville Twp., Michigan

Hi-Tech For Sale or Lease

24,000
Square Feet
AVAILABLE

Aerial



For more information, please contact:

STEVE GORDON

(248) 948 0101

sgordon@signatureassociates.com

DAVE GREEN

(248) 948 4184

dgreen@signatureassociates.com

SIGNATURE ASSOCIATES

One Towne Square, Suite 1200

Southfield, MI 48076

www.signatureassociates.com

Information is subject to verification and no liability for errors or omissions is assumed. Price is subject to change and listing withdrawal.