

2411 WEST BEVERLY ST

STAUNTON, VA 24401

FOR
SUBLEASE



LOCATION DESCRIPTION

Located in northwest Staunton off Bypass Route 262

PROPERTY HIGHLIGHTS

- Up to 8,922 SF available for sublease in successful Food Lion anchored shopping center
- Space in great condition and available for immediate occupancy
- Excellent signage opportunity available on building and pylon
- Full access
- Traffic Count: W Beverly St: 10,000 AADT



DEMOGRAPHICS	1 MILE 3 MILES 5 MILES		
Population	4,418	25,577	33,363
Households	1,984	11,377	14,738
Average Household Income	\$60,454	\$84,638	\$87,155
Median Household Income	\$46,822	\$62,517	\$63,914



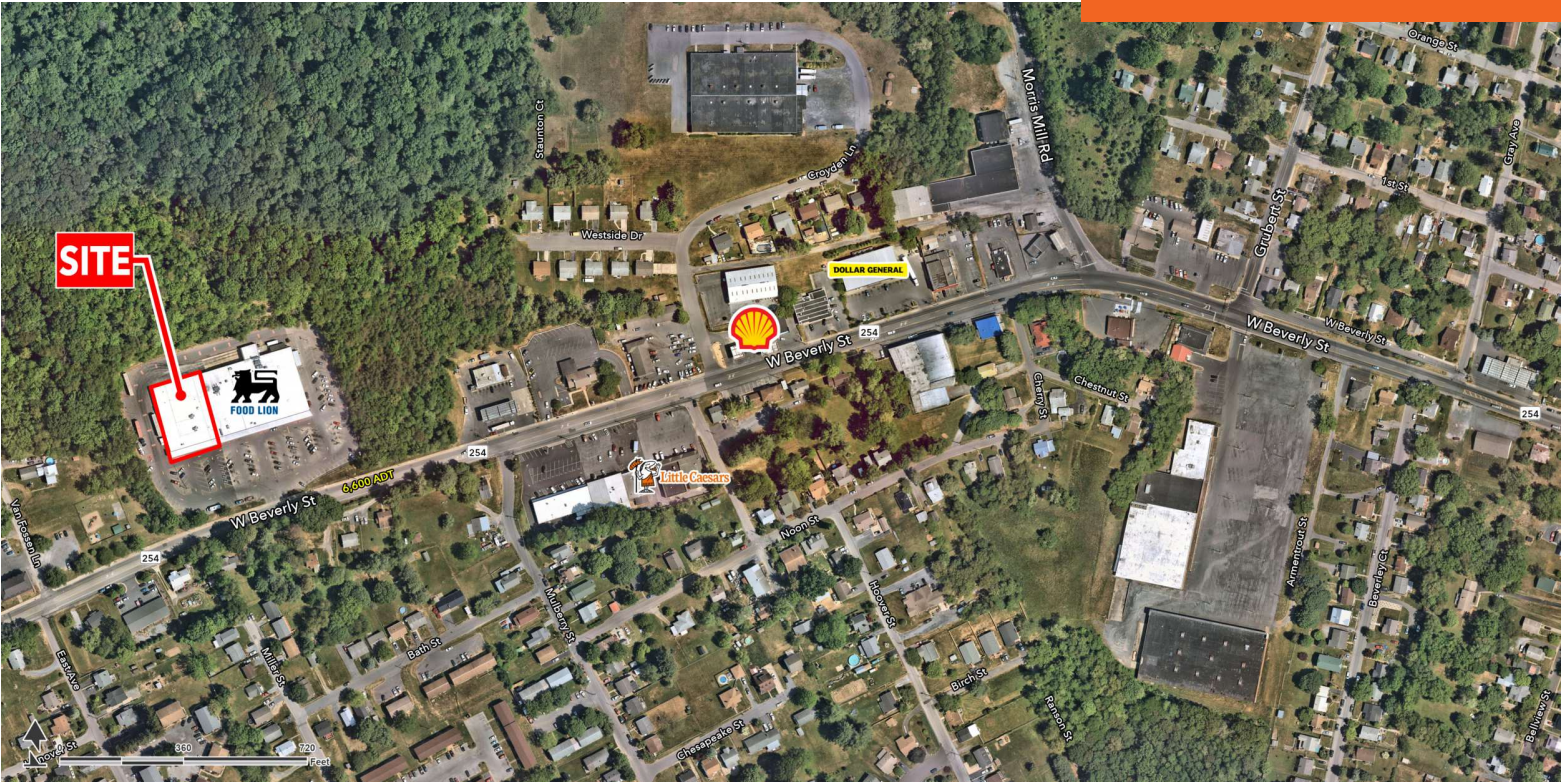
DAVID ANDREWS, CCIM
david.andrews@tscg.com
804.673.1100

CHRISTINA MAYHUGH
christina.mayhugh@tscg.com
804.673.1100

2411 WEST BEVERLY ST

STAUNTON, VA 24401

FOR LEASE



SUITE	TENANT NAME	SPACE SIZE
Small Shop	Available	8,922 SF



DAVID ANDREWS, CCIM
david.andrews@tscg.com
804.673.1100

CHRISTINA MAYHUGH
christina.mayhugh@tscg.com
804.673.1100