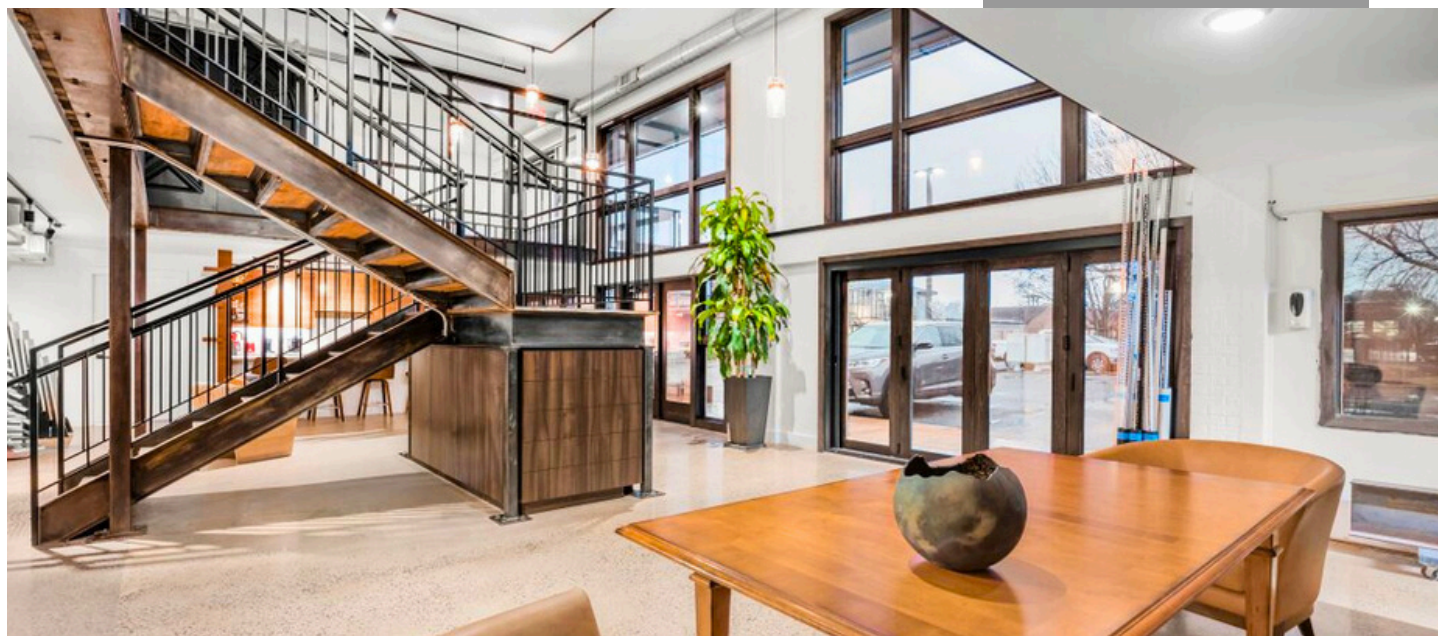


COMMERCIAL SPACE FOR LEASE

810 N LILAC DRIVE
GOLDEN VALLEY, MN
55422

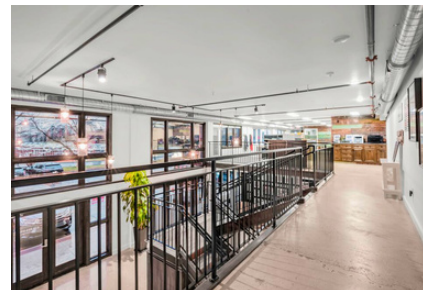
Lakes

Sotheby's
INTERNATIONAL REALTY



THE OFFERING:

- Commercial space
- 3,453 sq. ft.
- 1,323 sq. ft. of storage
- Building class: C
- CAM/Tax \$6.00 per sq ft
- Rental rate: \$13.50/SF/YR



LOCATION:

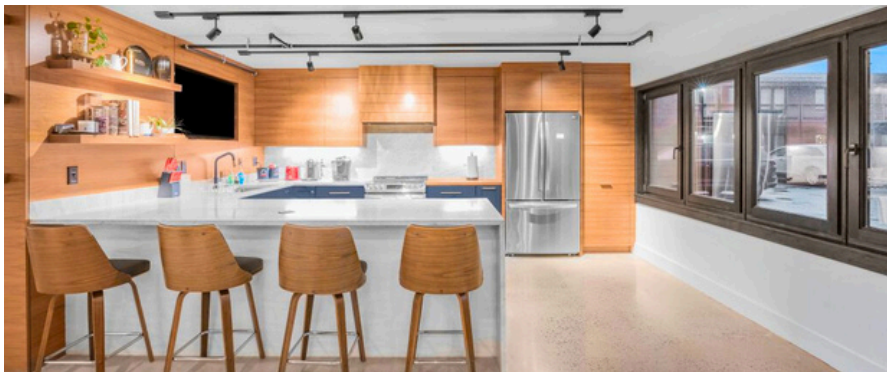
810 N Lilac Drive
Golden Valley, MN 55422

CHRISTIAN PETERSON

Sr. Commercial Real Estate
Specialist

612-269-1902

christian.peterson@lakesmn.com



810 N LILAC DRIVE | FLOOR PLAN



SPACE DETAILS:

The property features a two-story office space encompassing 3,453 square feet, complemented by an additional 1,323 square feet of storage that could serve as extra workspace. It includes a fully functional custom kitchen and an open-concept office area on the upper level, which consists of a spacious office, designated areas for cubicles, and a conference room equipped with a wet bar. Additionally, the facility boasts five bathrooms, with two located upstairs and three downstairs. Previously serving as the headquarters and showroom for a custom remodeler, the space showcases high-end finishes throughout.

Lakes

Sotheby's
INTERNATIONAL REALTY

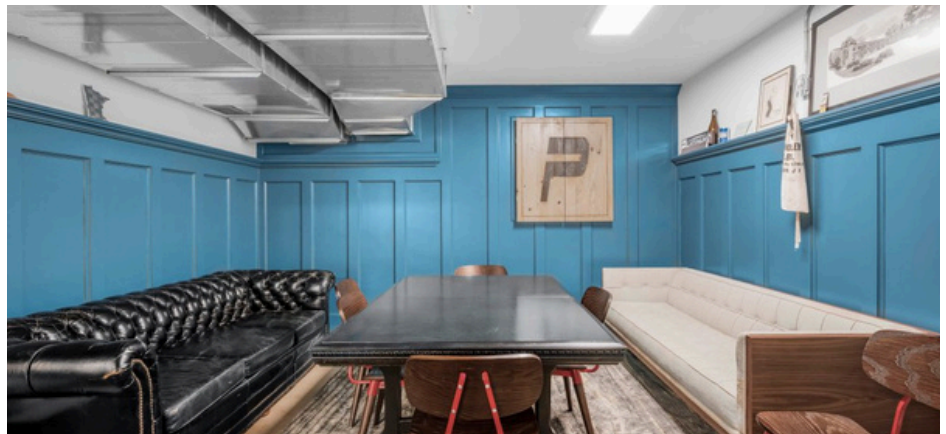
QUESTIONS?

Contact:

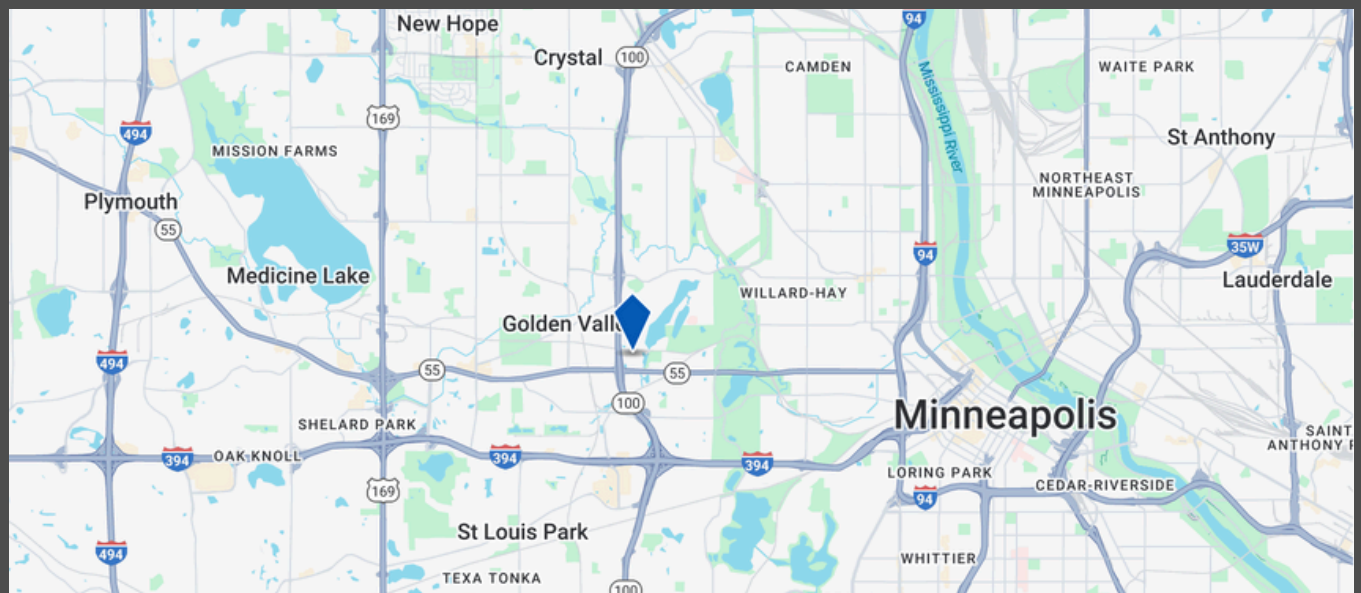
CHRISTIAN PETERSON

612-269-1902

christian.peterson@lakesmn.com



810 N LILAC DRIVE | SURROUNDING AREA



QUESTIONS?

CONTACT:

CHRISTIAN PETERSON

612-269-1902

christian.peterson@lakesmn.com

Lakes

Sotheby's

INTERNATIONAL REALTY

Disclaimer: We obtained the information above from sources we believe to be reliable. However, we do not claim to make a guarantee, warranty or representation about such information. It is submitted subject to the possibility of errors, omissions, change of price rental or other conditions, prior sale, lease or financing, or withdrawal without notice. You and your tax and legal advisors should conduct your own investigation of the property and transaction.