

253 E LAKE STREET Bartlett, IL

Bartlett is easily accessible from county, state and interstate highways and is becoming a prime location for both large and small businesses and the residents who use them.

Located at a lighted intersection with strong traffic counts.

200' of frontage along Lake Street (Route 20).

High density residential in surrounding area.

Ideal for multi-tenant strip mall or freestanding quick-service restaurant w/drive-thru capability.



EDGEMARK

CONTACT
INFORMATION

MATT SMETANA
630.572.5632
msmetana@edgemarkllc.com

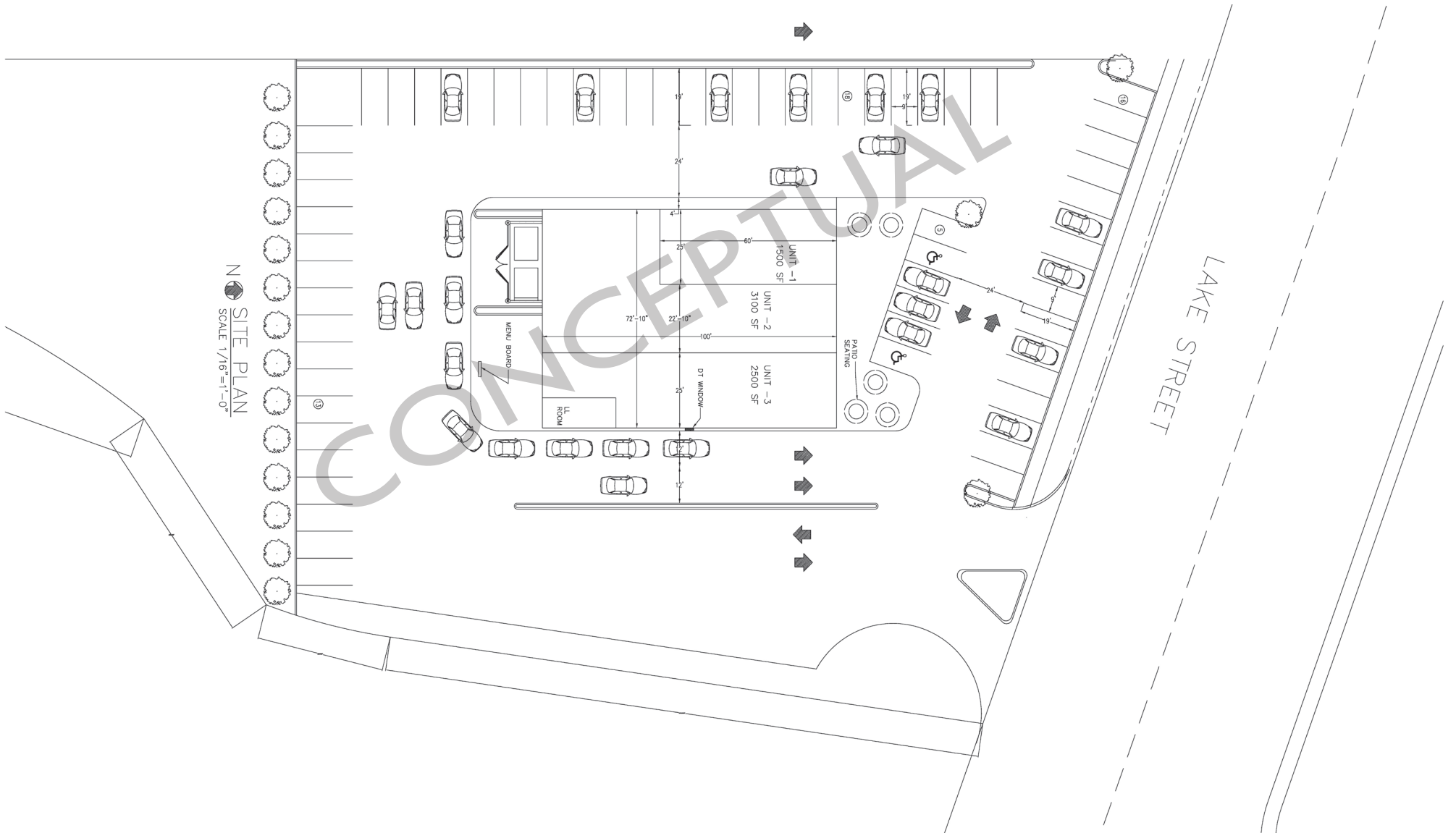
RANDY KOTWICA
630.572.5613
rkotwica@edgemarkllc.com



EDGEMARK COMMERCIAL REAL ESTATE SERVICES LLC
2215 York Road, Suite 503
Oak Brook, IL 60523
P 630.472.1010 F 630.472.1019
www.edgemarkllc.com

CONCEPTUAL PLAN

253 E LAKE STREET, Bartlett, IL



CONTACT
INFORMATION

MATT SMETANA
630.572.5632
msmetana@edgemarkllc.com

RANDY KOTWICA
630.572.5613
rkotwica@edgemarkllc.com

EDGEMARK COMMERCIAL REAL ESTATE SERVICES LLC
2215 York Road, Suite 503
Oak Brook, IL 60523
P 630.472.1010 F 630.472.1019
www.edgemarkllc.com



**253 E LAKE ST
BARTLETT, IL
1.66 ACRES**

DEMOGRAPHICS

POPULATION 🧑

1 MILE	16,617
3 MILE	102,946
5 MILE	222,216

AVERAGE HH INCOME 💰

1 MILE	\$100,666
3 MILE	\$111,182
5 MILE	\$117,459

DAYTIME POPULATION 🏢

1 MILE	4,045
3 MILE	21,726
5 MILE	68,082



**CONTACT
INFORMATION**

MATT SMETANA
630.572.5632
msmetana@edgemarkllc.com

RANDY KOTWICA
630.572.5613
rkotwica@edgemarkllc.com