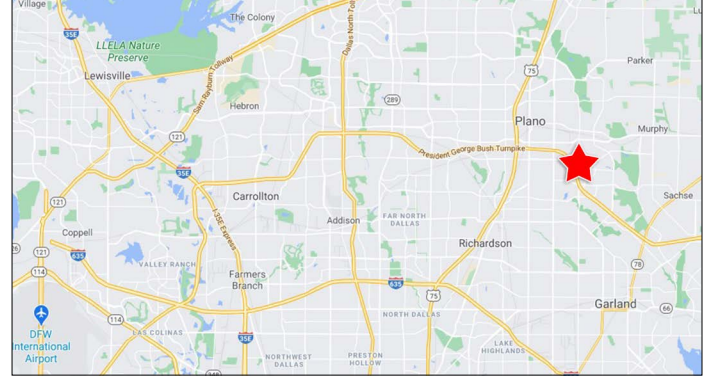


MEDICAL /PROFESSIONAL OFFICE CONDOS FOR SALE OR LEASE!



PROPERTY DESCRIPTION

- New office/medical condo development off George Bush Turnpike at E. Renner Rd and Shiloh Rd
- For Sale or Lease
- Up to 20,000 SF
- Daytime population of 116k+ within 3 miles
- Easy access to President George Bush Turnpike
- Located just north of Methodist Richardson Medical Center, a 209 bed hospital with 1,665 employees
- On the border of Plano and Richardson, two of DFW's most affluent communities



DEMOGRAPHICS

	1 Mile	3 Mile	5 Mile
2023 Population	7,356	105,679	291,319
Daytime Population	14,159	116,447	323,924
Average HH Income	\$145,251	\$119,058	\$120,237

TRAFFIC COUNTS:

Renner: 18,999 VPD | Shiloh: 12,900 VPD (Kalibrate 2023)

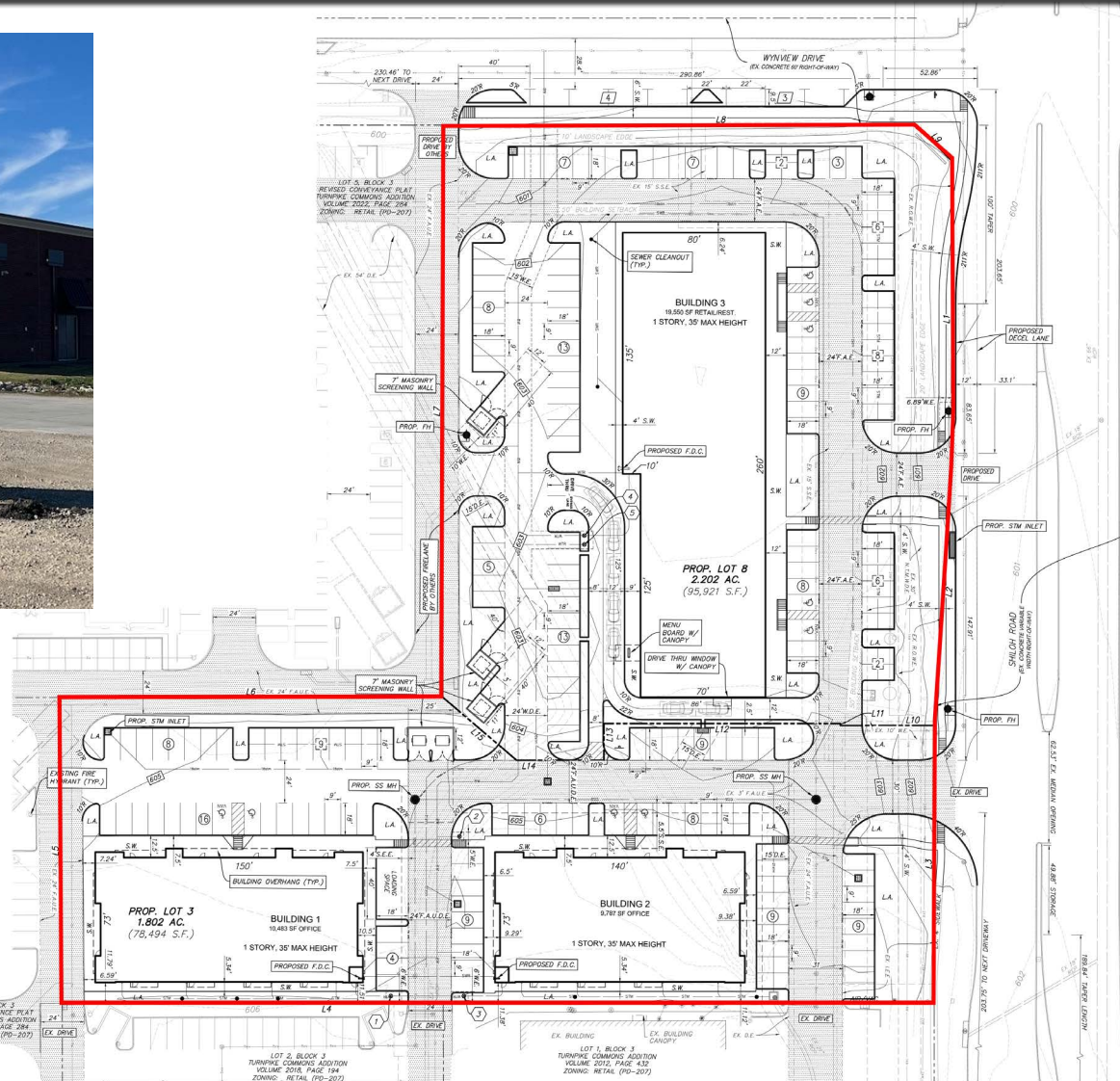
AREA TRAFFIC DRIVERS



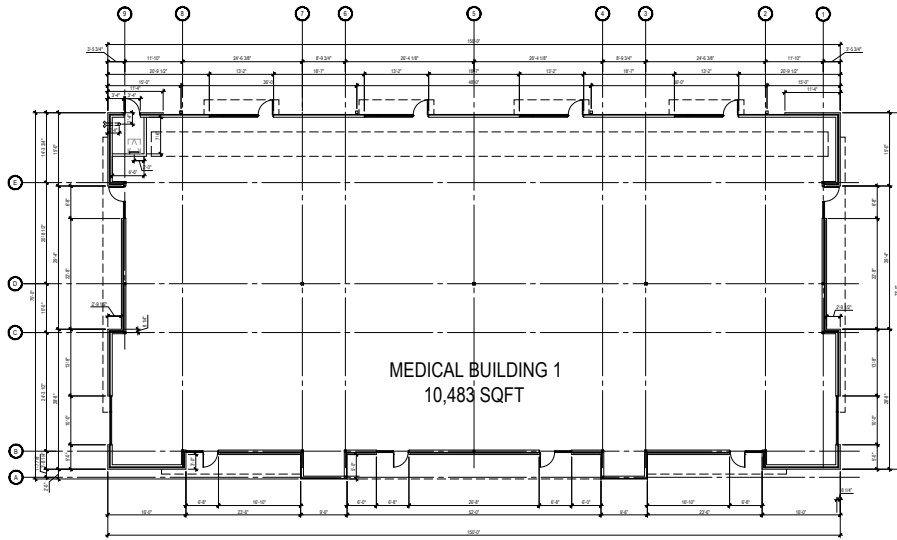
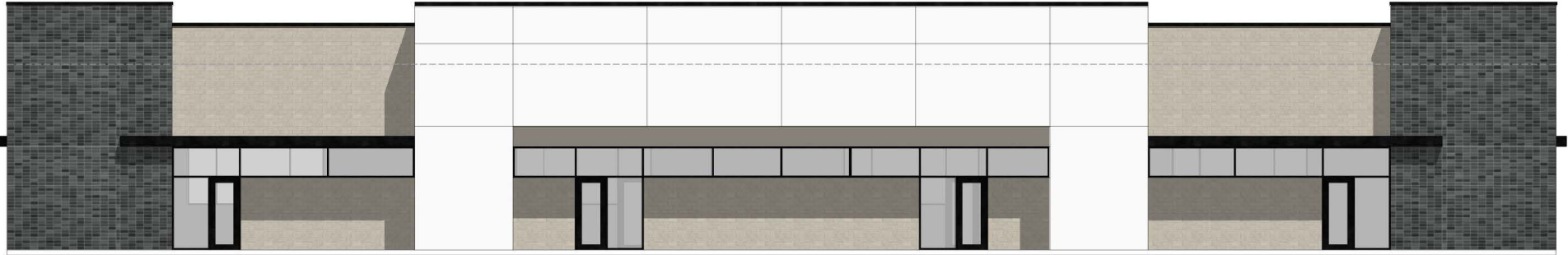
ALAN ALTICK, CCIM | 214.384.0729
alan@stonewoodinvestments.com

SUZY MURFF | 972.898.7047
suzy@stonewoodinvestments.com

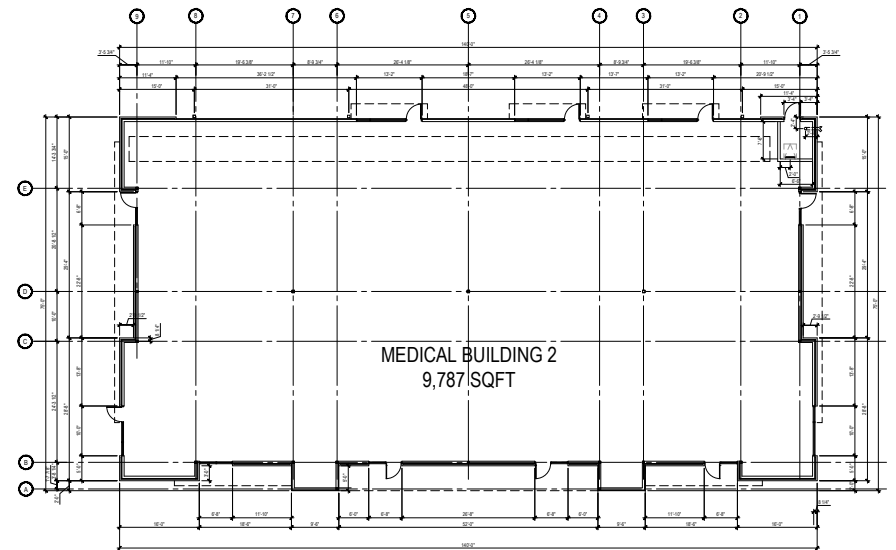
MEDICAL /PROFESSIONAL OFFICE CONDOS FOR SALE OR LEASE



MEDICAL / PROFESSIONAL OFFICE CONDOS FOR SALE OR LEASE



01 BUILDING 1- LEASE PLAN



01 BUILDING 2- LEASE PLAN

MEDICAL / PROFESSIONAL OFFICE CONDOS FOR SALE OR LEASE



\$1 Billion Redevelopment from traditional mall into open-air retail, entertainment venue & luxury hotel

JOANN

SITE