

Building 7

1325 Main St, Katy, TX 77494



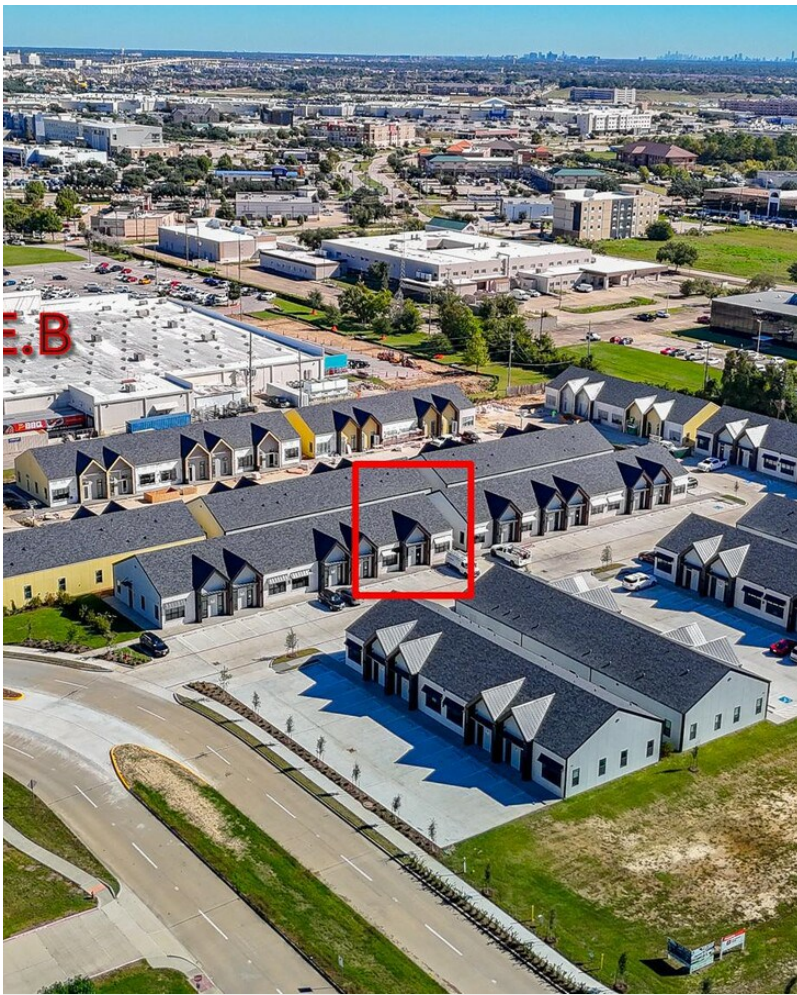
Syed Mubashir

M & M Realty

20501 Katy Fwy, Suite 138C, Katy, TX 77450

mubashir.syed@gmail.com

(832) 723-5294

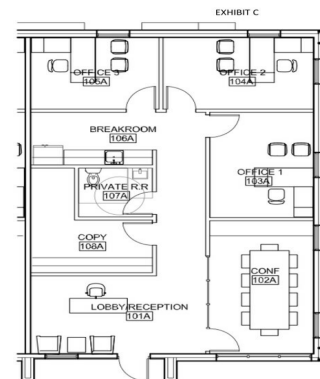


Building 7

\$34.50 /SF/YR

Stunning 1320 SQFT Medical/Professional Office Space in the Katy Main Office Park Community located at a Premium Location right off of I-10 and Pin Oak, Right behind HEB Shopping Center and Opposite of the Katy YMCA Building. Minutes away from Katy Mills Mall, La Centerra, Restaurants and all the Entertainment, this CORNER Office Space is the Ideal Place to situate and thrive your business. The 1320 SF Floorplan features a High Ceiling Lobby Space, 3 Private Offices, a Work/Copy Room, Bathroom, Kitchenette and a Conference Room. The Office...

- Premium Location with EASY ACCESS Right Off of Interstate 10 & Pin Oak!!
- Across the street from Katy Mills Mall, Red Lobster and Many Other Restaurants
- Minutes from Katy Medical Center/Memorial Hermann Hospital
- Right behind H.E.B Grocery Store & Opposite of Katy YMCA
- Hottest Zip code in KATY, Texas 77494
- Amazing Location for Business Visibility & Access



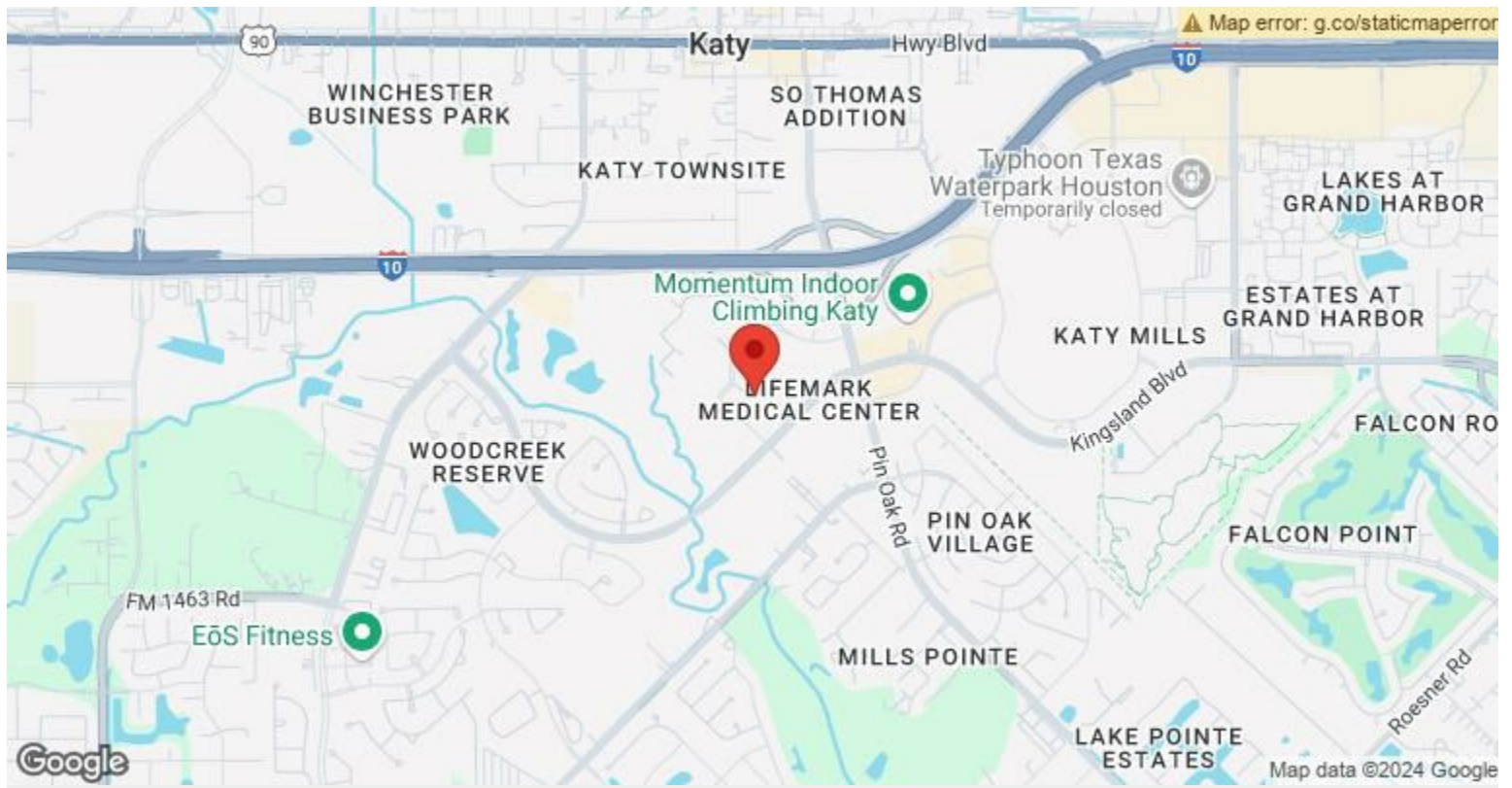
**BLDG 700
STE # 706**

Rental Rate:	\$34.50 /SF/YR
Property Type:	Office
Building Class:	B
Rentable Building Area:	5,280 SF
Year Built:	2024
Walk Score ©:	54 (Somewhat Walkable)
Rental Rate Mo:	\$2.88 /SF/MO

1st Floor Ste 706

Space Available	1,320 SF
Rental Rate	\$34.50 /SF/YR
Date Available	30 Days
Service Type	Full Service
Built Out As	Standard Office
Space Type	Relet
Space Use	Office
Lease Term	2 - 5 Years

Stunning 1320 SQFT Medical/Professional Office Space in the Katy Main Office Park Community located at a Premium Location right off of I-10 and Pin Oak, Right behind HEB Shopping Center and Opposite of the Katy YMCA Building. Minutes away from Katy Mills Mall, La Centerra, Restaurants and all the Entertainment, this CORNER Office Space is the Ideal Place to situate and thrive your business. The 1320 SF Floorplan features a High Ceiling Lobby Space, 3 Private Offices, a Work/Copy Room, Bathroom, Kitchenette and a Conference Room. The Office Space also boasts Designer Luxury Vinyl Plank Flooring, Paint, Crown Mouldings, Recessed Lighting, Quartz Countertops and lots of Windows bringing in abundant Natural Light to keep the Space Super Bright. Easy 24 hour Office access.



1325 Main St, Katy, TX 77494

Stunning 1320 SQFT Medical/Professional Office Space in the Katy Main Office Park Community located at a Premium Location right off of I-10 and Pin Oak, Right behind HEB Shopping Center and Opposite of the Katy YMCA Building. Minutes away from Katy Mills Mall, La Centerra, Restaurants and all the Entertainment, this CORNER Office Space is the Ideal Place to situate and thrive your business. The 1320 SF Floorplan features a High Ceiling Lobby Space, 3 Private Offices, a Work/Copy Room, Bathroom, Kitchenette and a Conference Room. The Office Space also boasts Designer Luxury Vinyl Plank Flooring, Paint, Crown Mouldings, Recessed Lighting, Quartz Countertops and lots of Windows bringing in abundant Natural Light to keep the Space Super Bright. Easy 24 hour Office access. Enjoy the convenience of your own private office space at a Prime Easy Access Location.

Property Photos



CORNER UNIT



Easy access from I-10

Property Photos

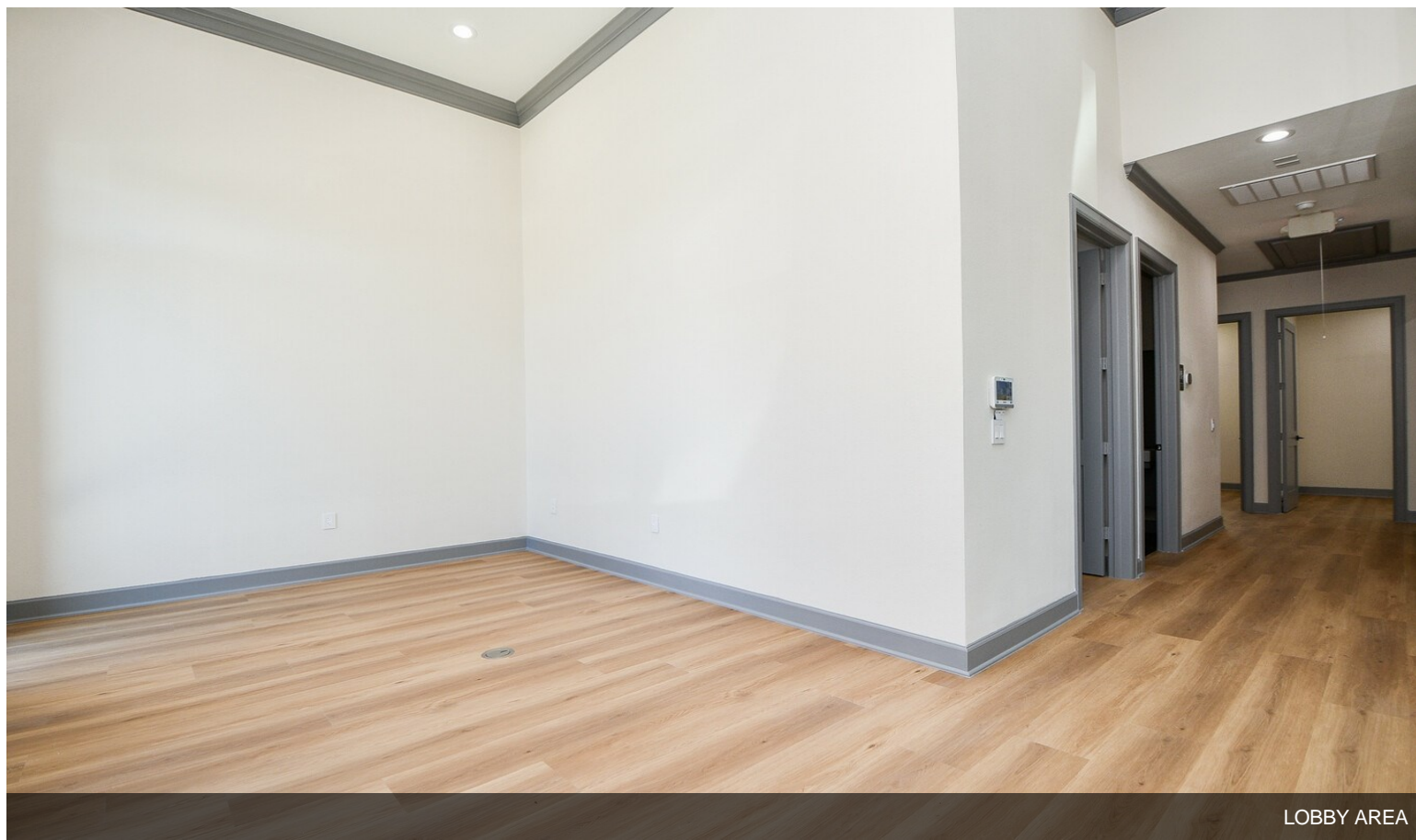


CORNOR UNIT OFFERS LOTS OF WINDOWS

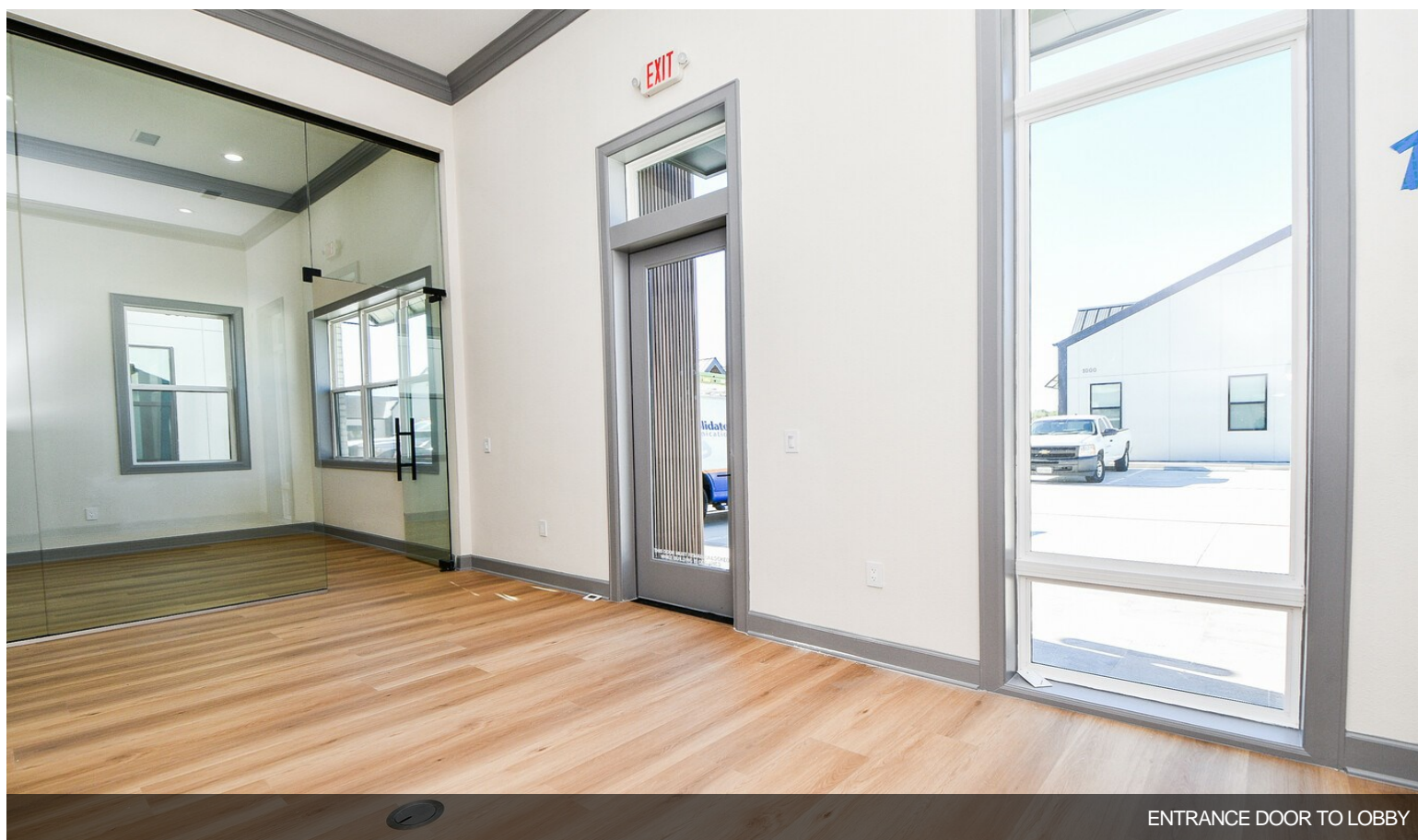


ENTRANCE

Property Photos

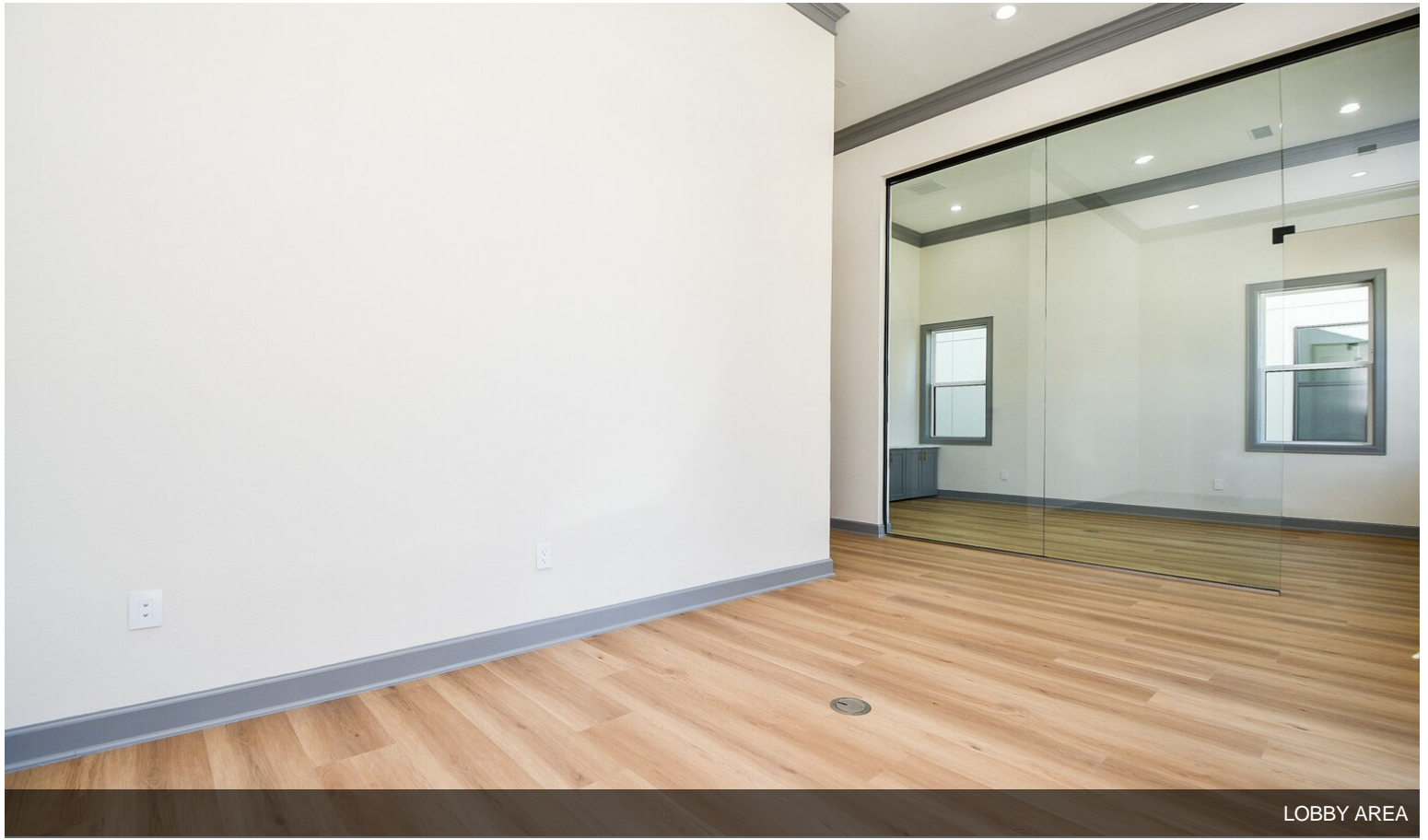


LOBBY AREA

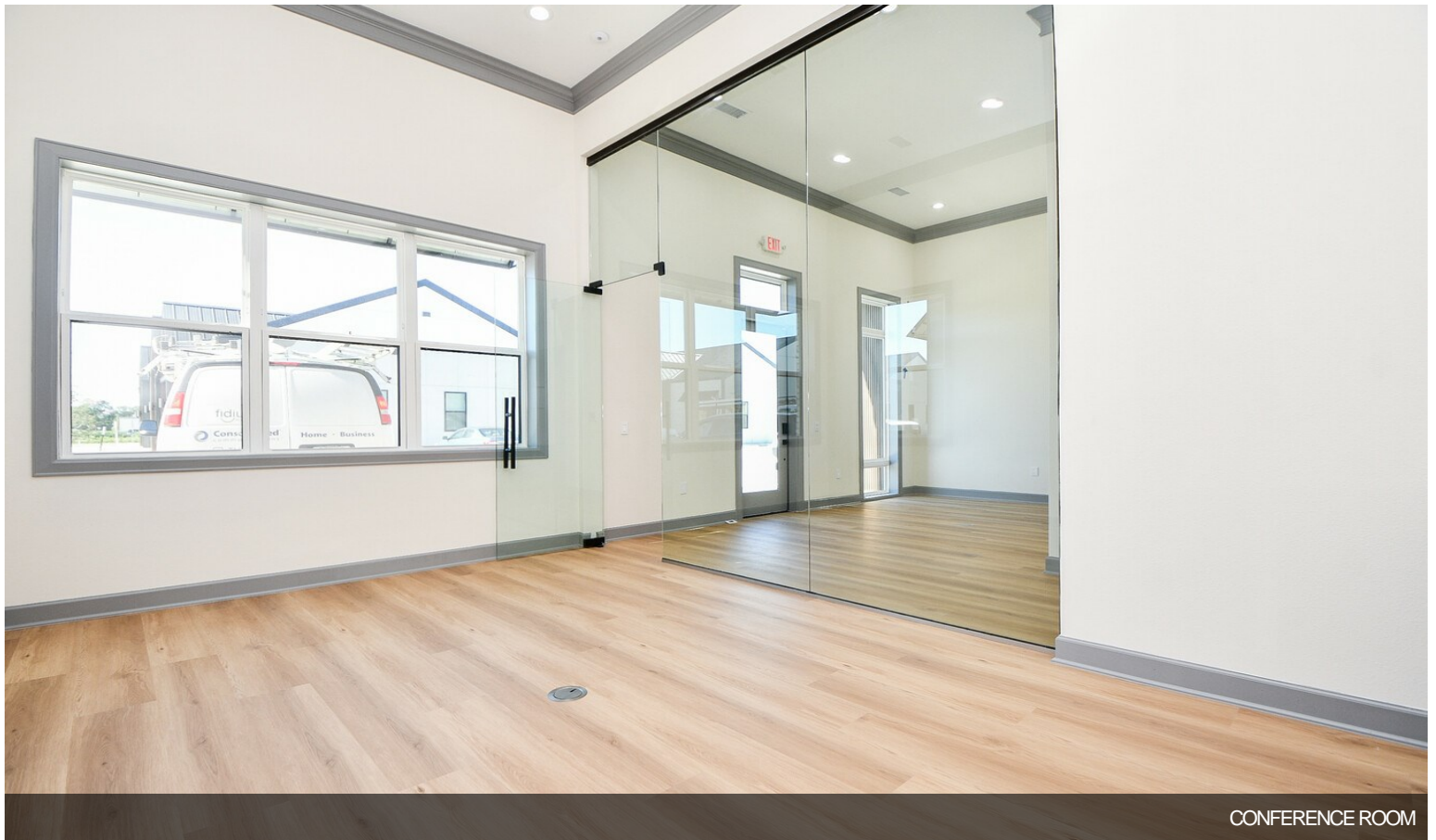


ENTRANCE DOOR TO LOBBY

Property Photos

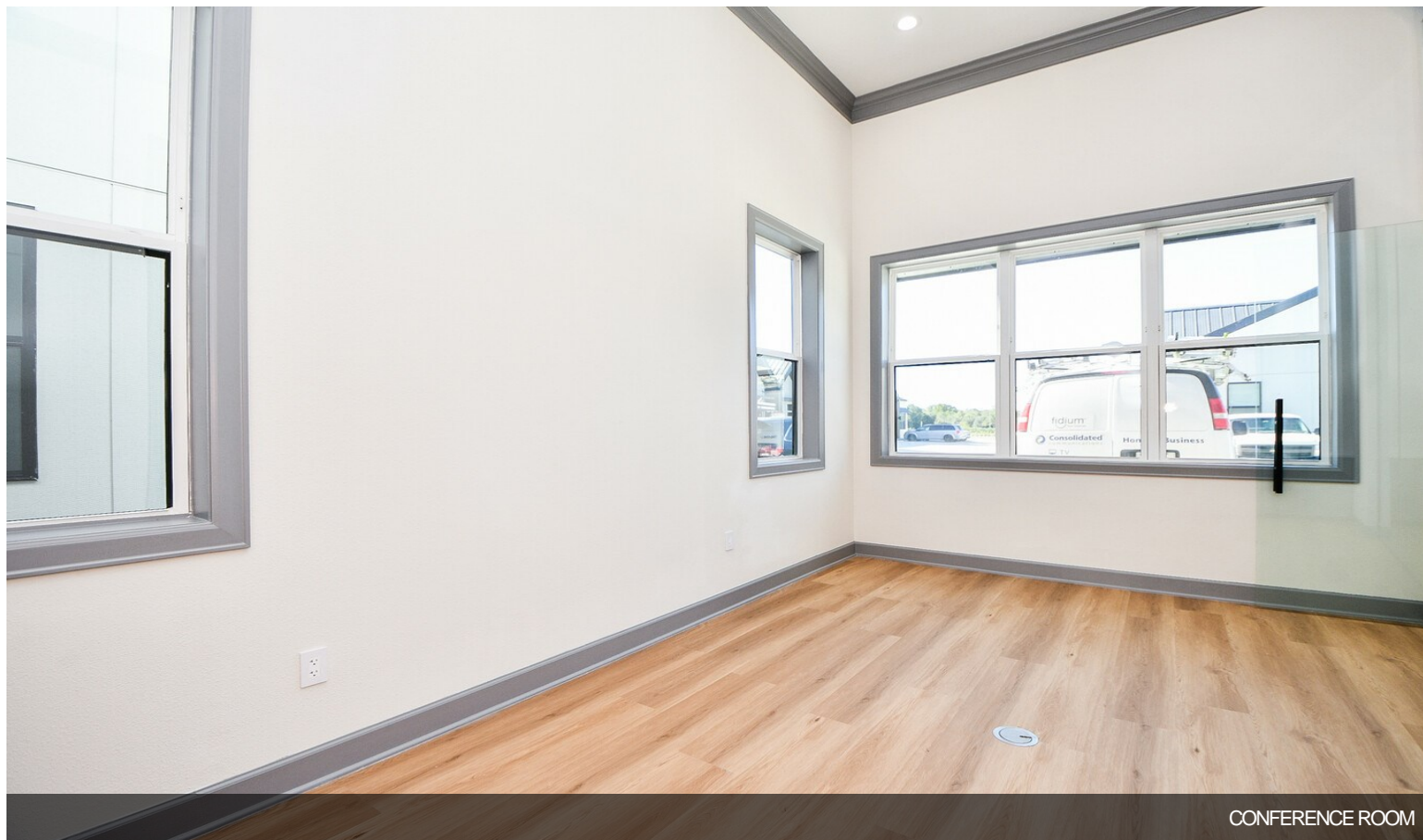
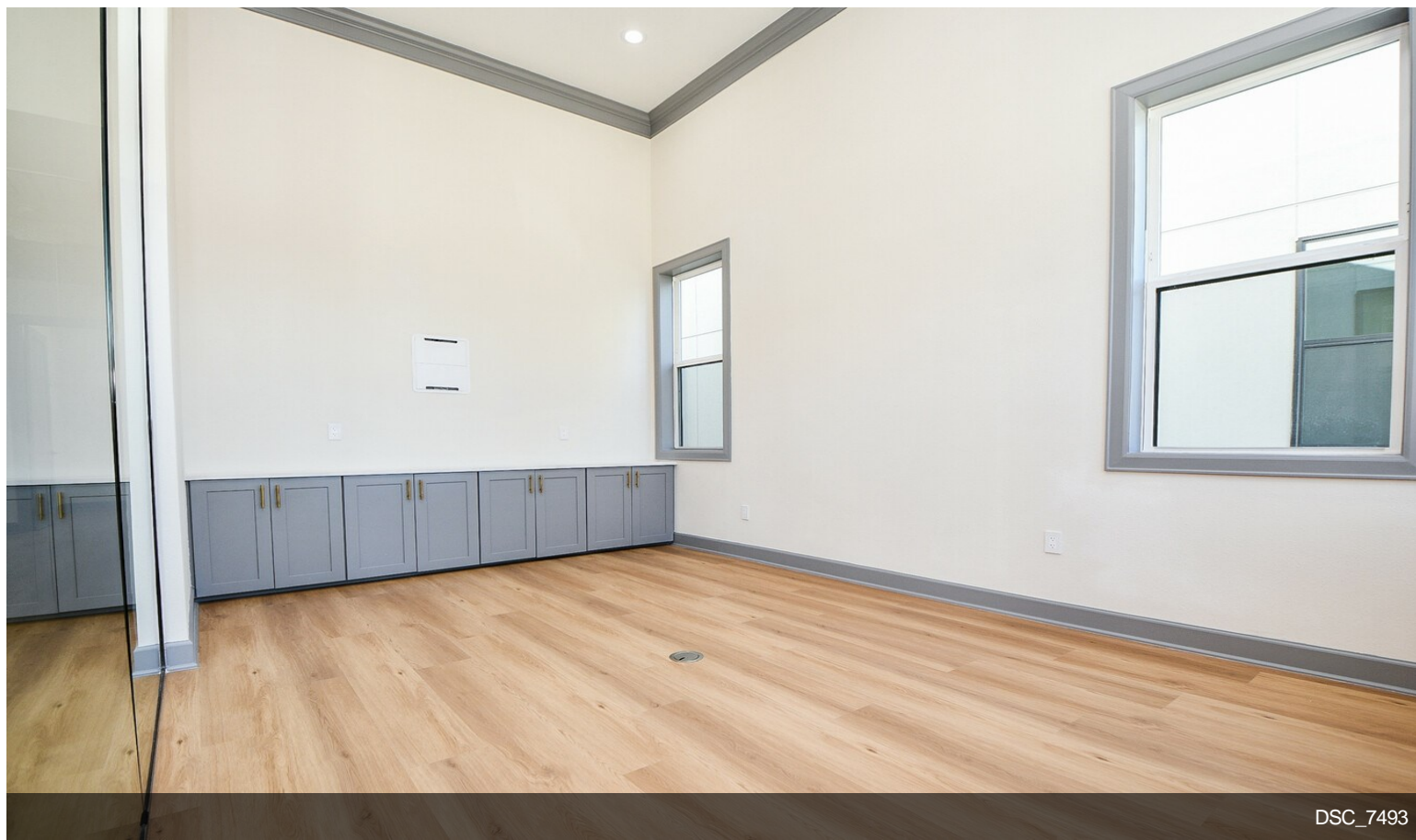


LOBBY AREA

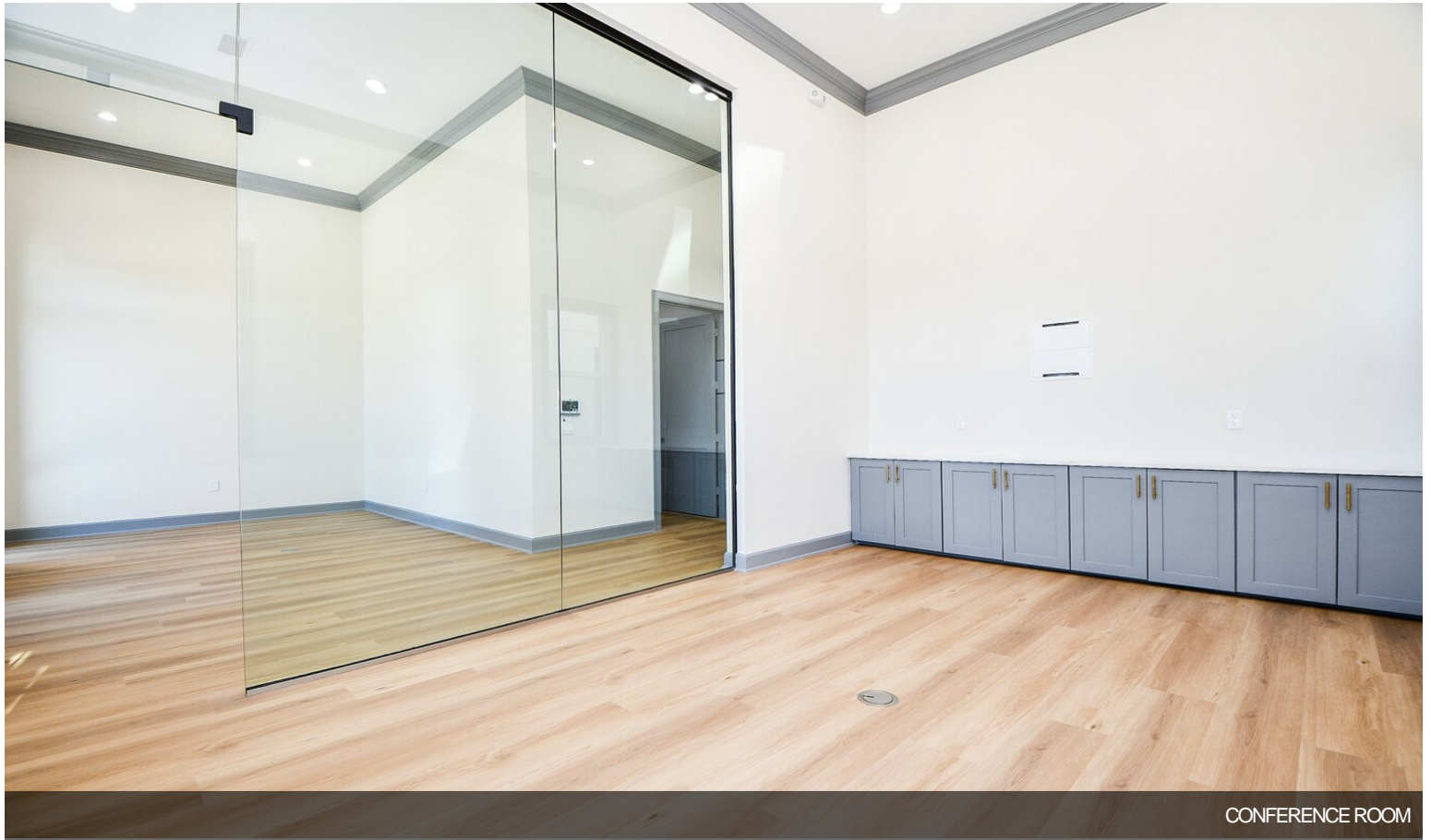


CONFERENCE ROOM

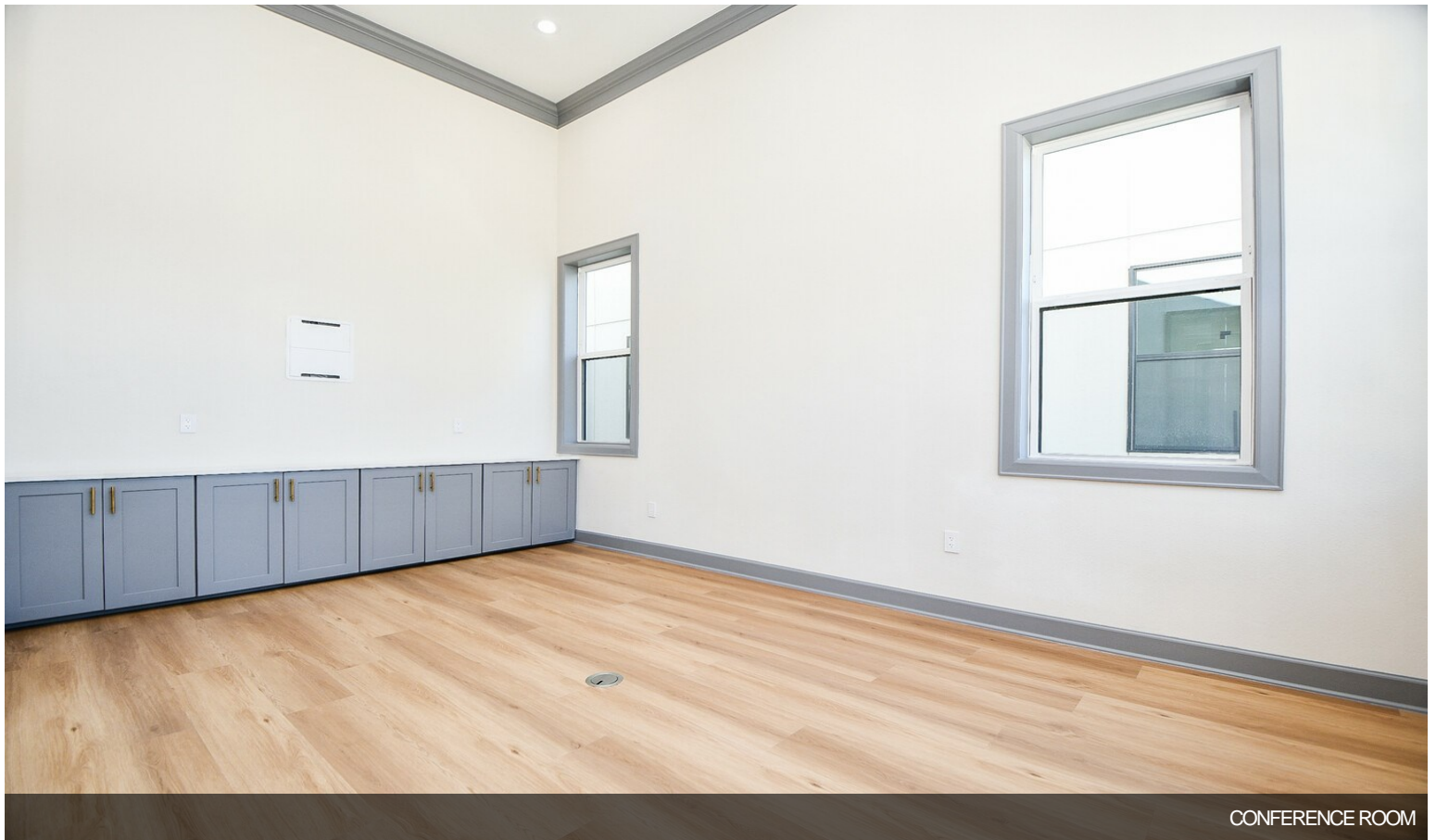
Property Photos



Property Photos

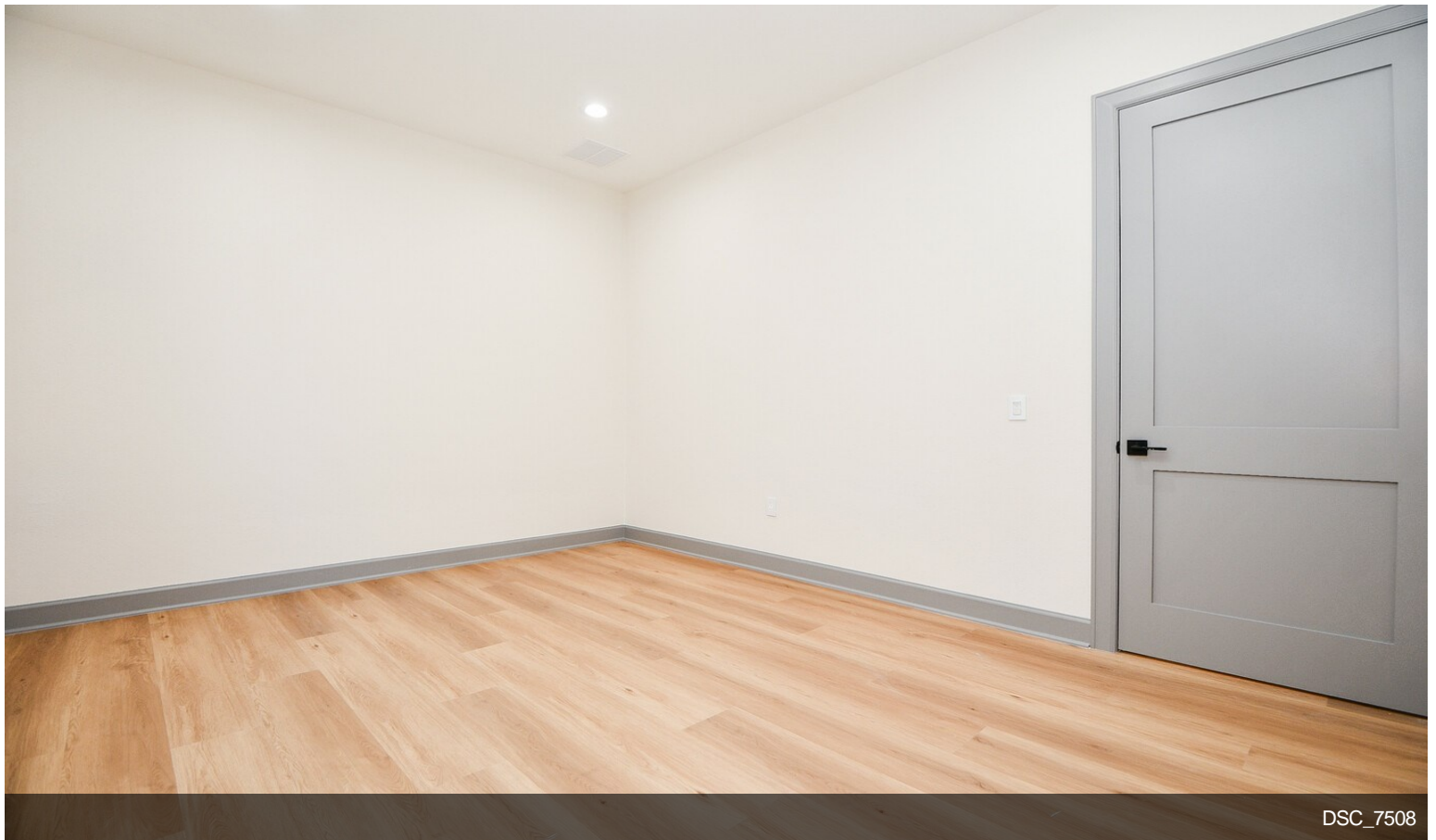


CONFERENCE ROOM

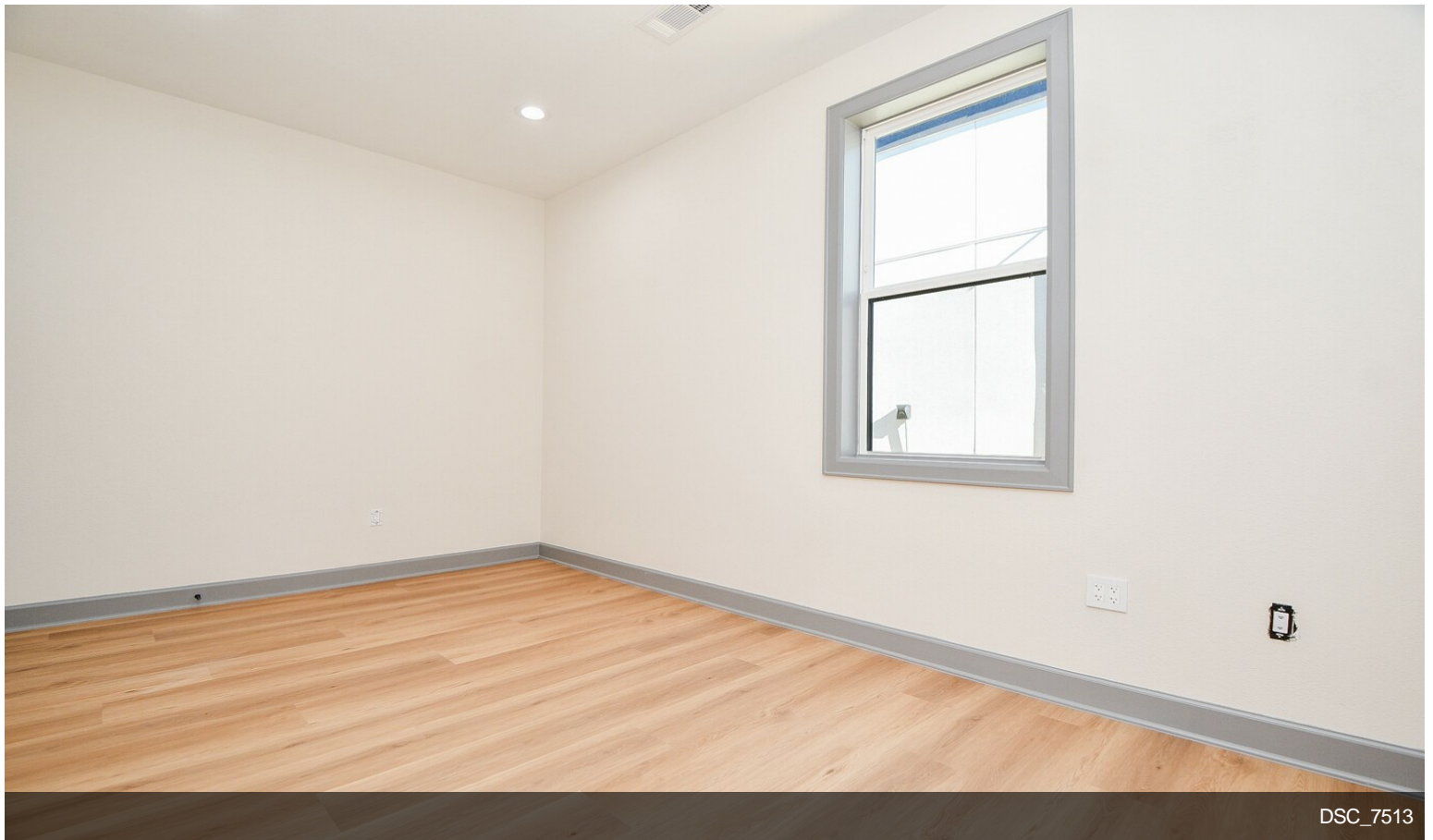
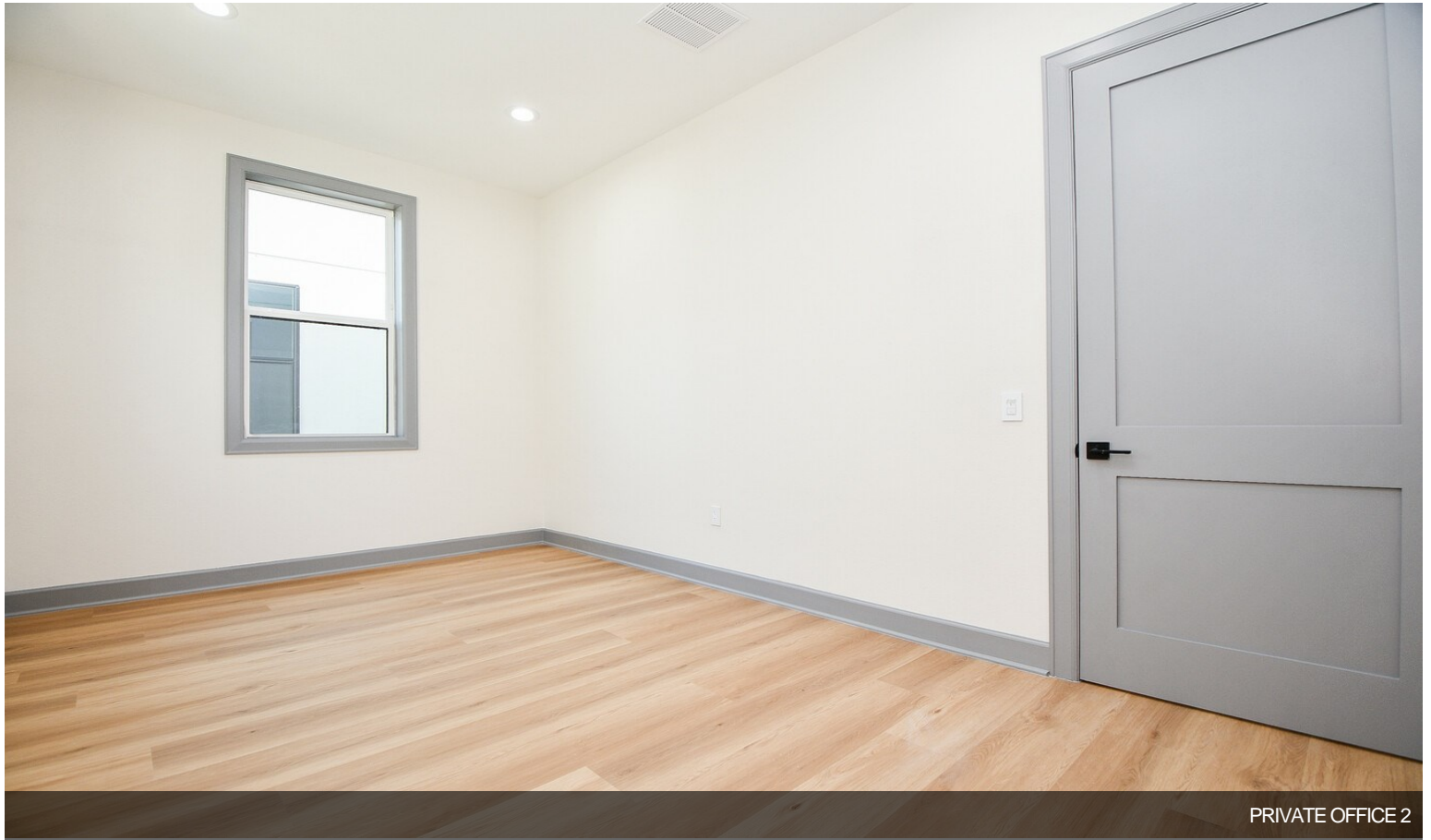


CONFERENCE ROOM

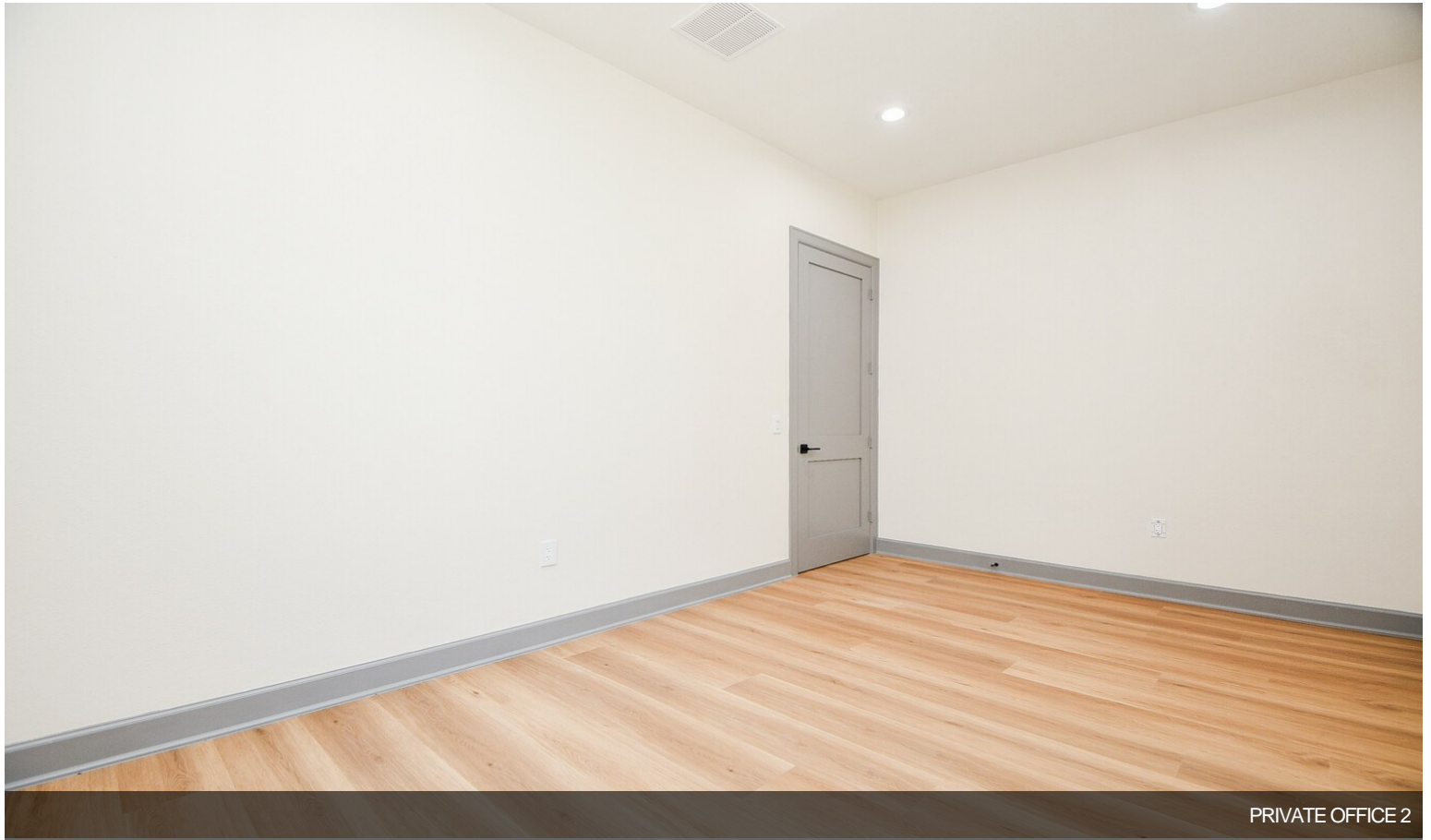
Property Photos



Property Photos



Property Photos



PRIVATE OFFICE 2



BATHROOM

Property Photos

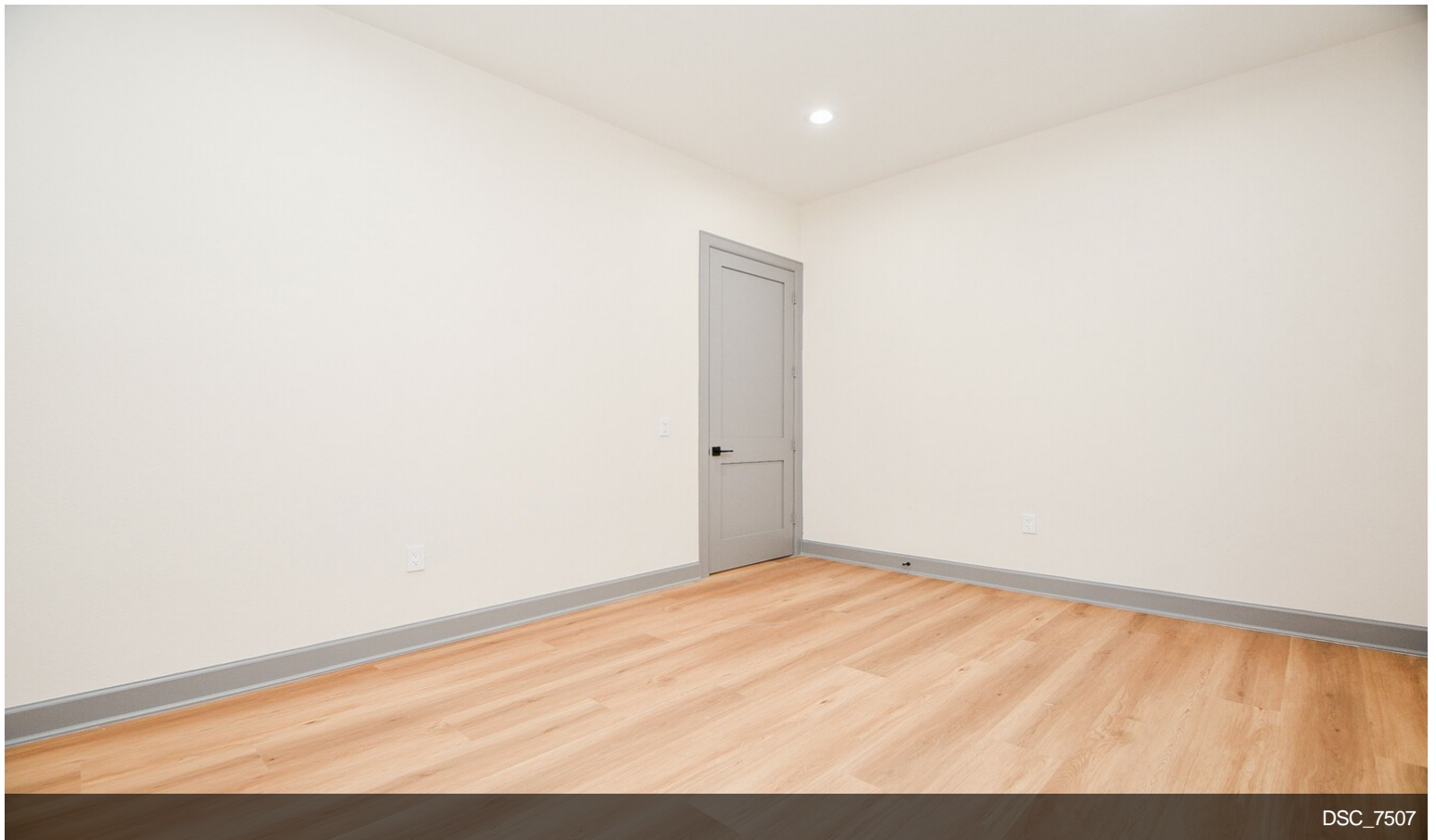
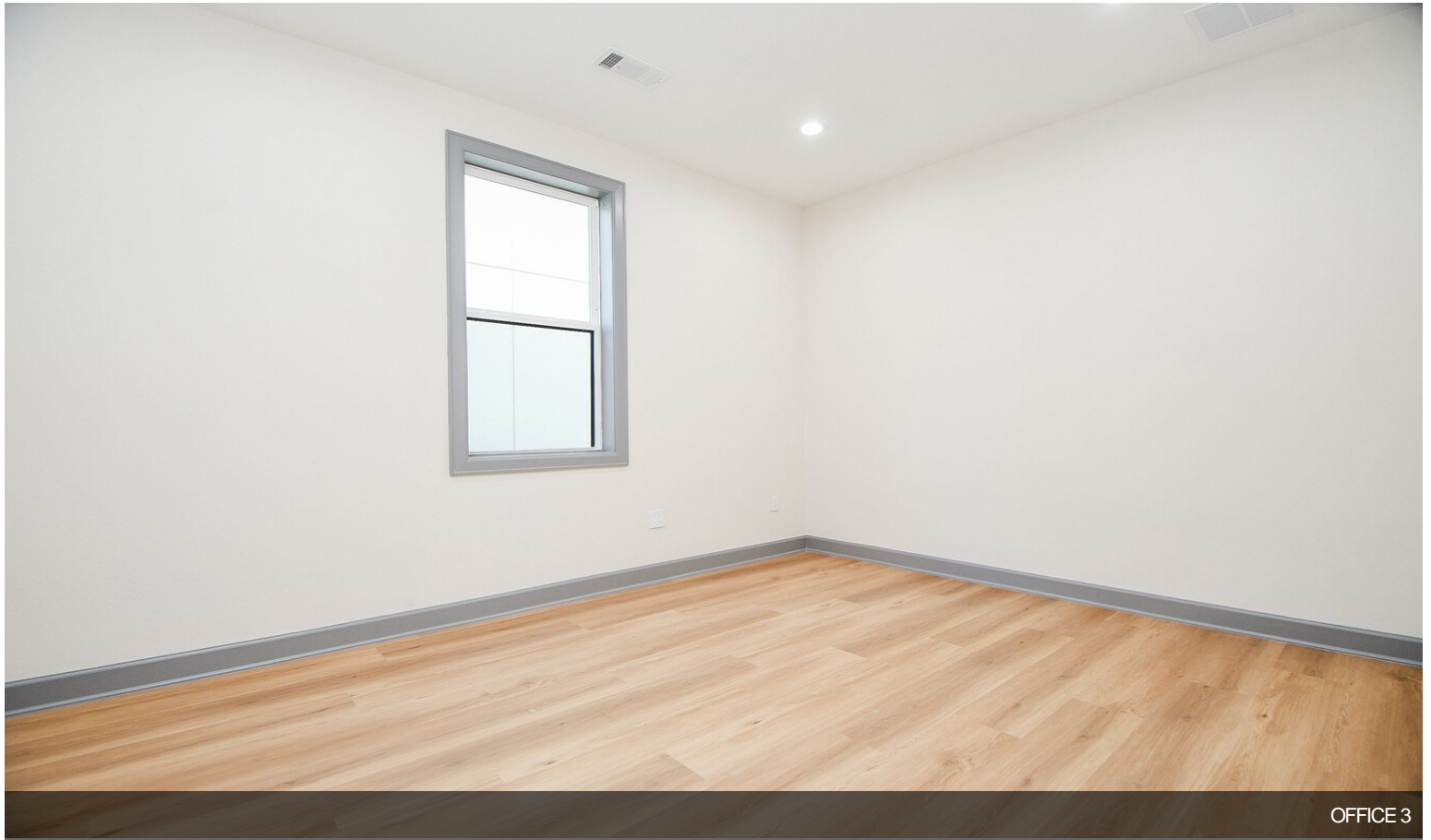


BATHROOM SINK



DSC_7506

Property Photos



Property Photos

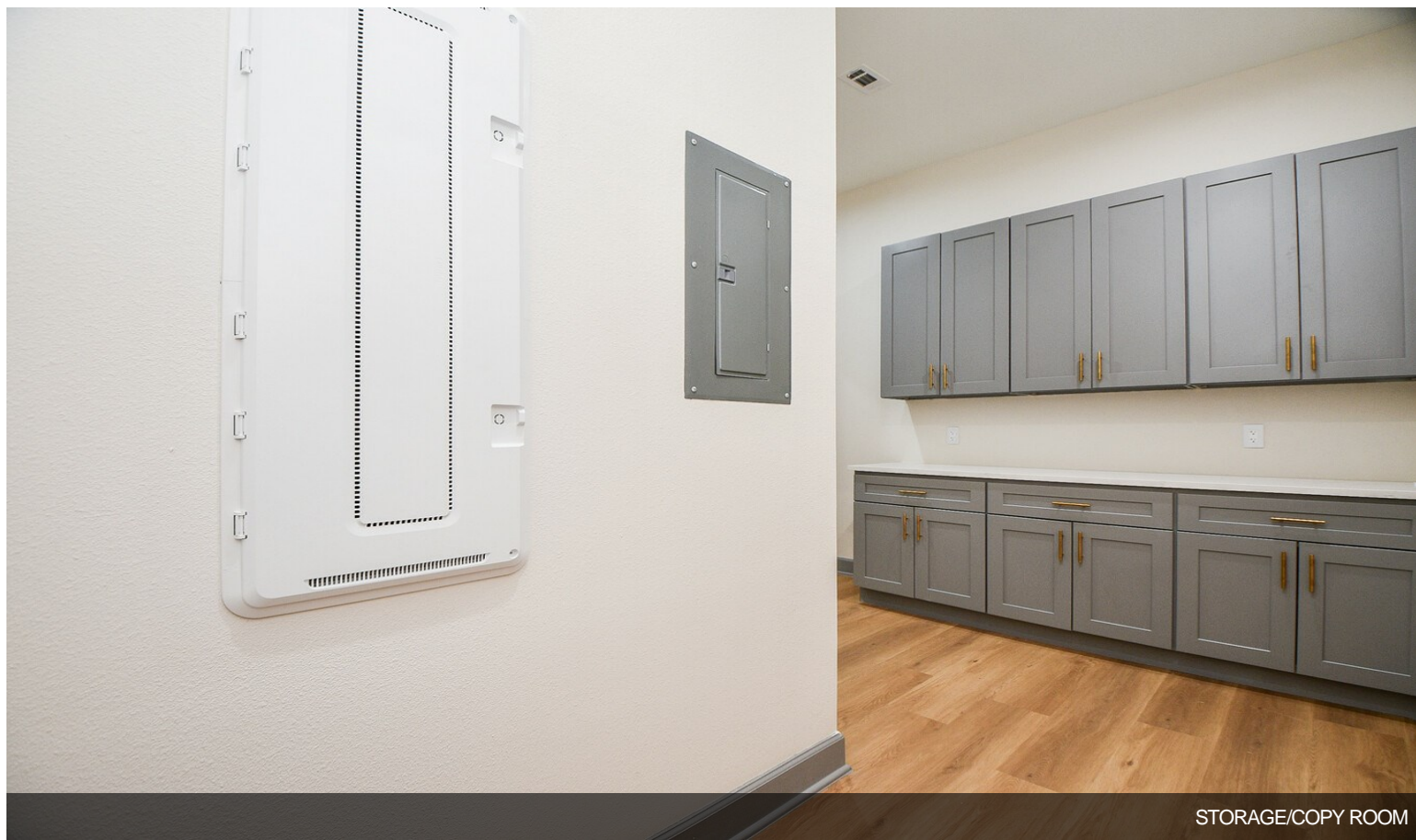


STORAGE/COPY ROOM



LOTS OF STORAGE AREA

Property Photos



STORAGE/COPY ROOM



UNIT COMING WITH REFRIGERATOR

Property Photos



BREAKROOM SPACE



Interior Photo

Property Photos

