



FLEX SPACE FOR LEASE

224 SCHILLING CIRCLE

HUNT VALLEY, MD 21031



Patrick Smith, SIOR | Vice President
☎ 410.494.4866 ✉ psmith@mackenziecommercial.com
MacKenzie Commercial Real Estate Services, LLC • 410-821-8585 • 2328 W. Joppa Road, Suite 200 | Lutherville-Timonium, Maryland 21093 • www.MACKENZIECOMMERCIAL.com

Chris Boland | Senior Real Estate Advisor
☎ 410.494.6644 ✉ cboland@mackenziecommercial.com
MacKenzie Commercial Real Estate Services, LLC • 410-821-8585 • 2328 W. Joppa Road, Suite 200 | Lutherville-Timonium, Maryland 21093 • www.MACKENZIECOMMERCIAL.com

FOR LEASE

 Baltimore County, MD

224 SCHILLING CIRCLE

HUNT VALLEY, MARYLAND 21031

AVAILABLE

224 Schilling Circle (Flex Space)
Suite 100: 3,000 sf - 15,400 sf

BUILDING SIZE

30,010 sf (2 story)

ZONING

ML-IM (Manufacturing Light)

RENTAL RATE

\$11.75/NNN

OPERATING EXPENSES

\$6.00 (Including utilities)

HIGHLIGHTS

- ▶ Abundant parking 5/1,000
- ▶ Close proximity to Hunt Valley Towne Center and other York Road amenities
- ▶ Easy access to I-83
- ▶ Short-term leases available
- ▶ Full floor direct access opportunities



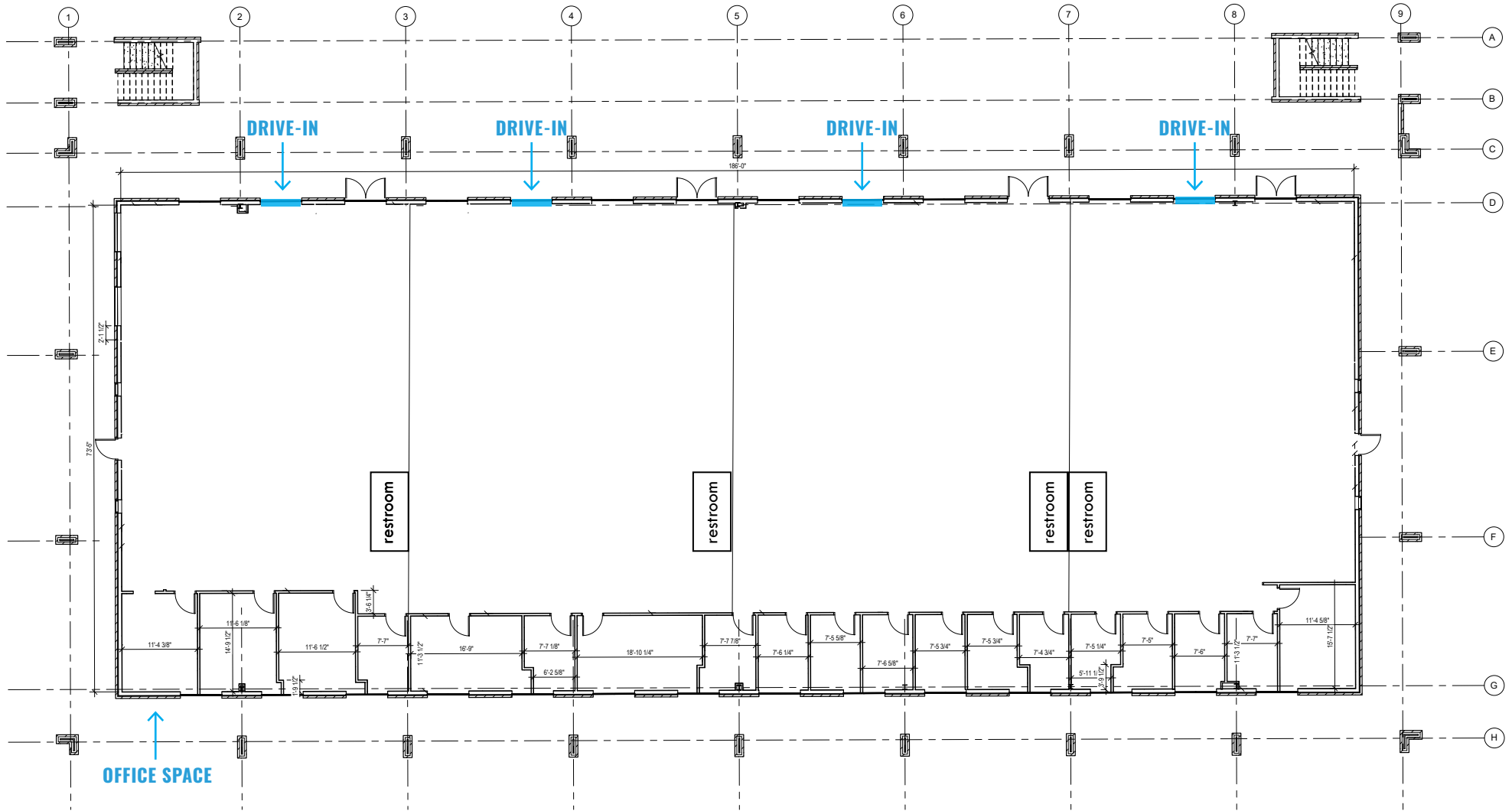
FOR LEASE

Baltimore County, MD

FLOOR PLAN: 224 SCHILLING CIR. (1ST FLOOR)

224 SCHILLING CIRCLE | HUNT VALLEY, MARYLAND 21031

3,750 sf ± per "bay"



FOR LEASE

Baltimore County, MD

BIRDSEYE

224 SCHILLING CIRCLE | HUNT VALLEY, MARYLAND 21031



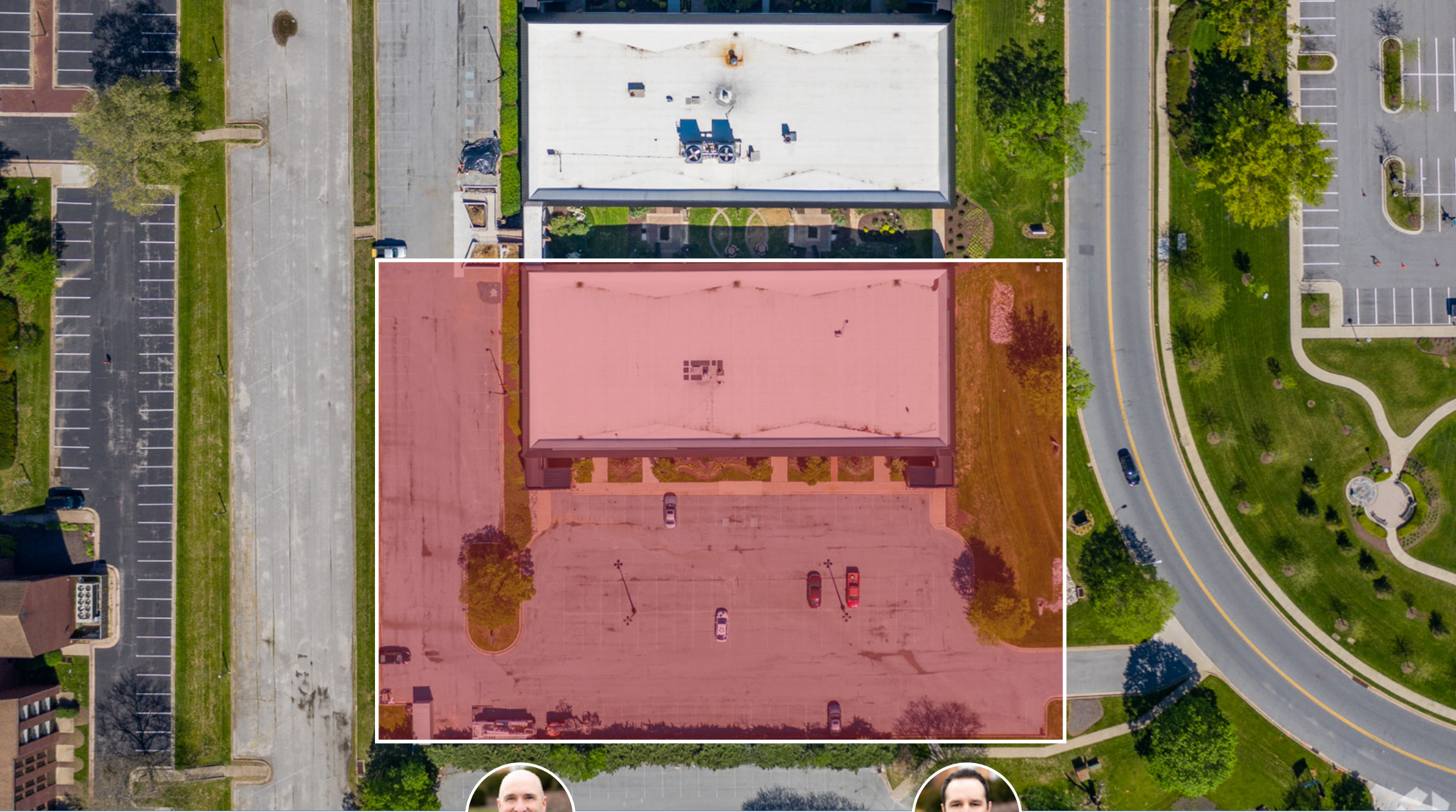
FOR LEASE

Baltimore County, MD

TRADE AREA

224 SCHILLING CIRCLE | HUNT VALLEY, MARYLAND 21031





PATRICK SMITH, SIOR

VICE PRESIDENT

MACKENZIE COMMERCIAL REAL ESTATE SERVICES, LLC

410.494.4866

PSMITH@MACKENZIECOMMERCIAL.COM



CHRIS BOLAND

SENIOR REAL ESTATE ADVISOR

MACKENZIE COMMERCIAL REAL ESTATE SERVICES, LLC

410.494.6644

CBOLAND@MACKENZIECOMMERCIAL.COM

MacKenzie Commercial Real Estate Services, LLC • 410-821-8585 • 2328 W. Joppa Road, Suite 200 | Lutherville, Maryland 21093 • www.MACKENZIECOMMERCIAL.com

No warranty or representation, expressed or implied, is made as to the accuracy of the information contained herein, and same is submitted subject to errors, omissions, change of price, rental or other conditions, withdrawal without notice, and to any specific listing conditions imposed by our principals.