

BOYLE HEIGHTS - OFFICE/MEDICAL SPACE FOR LEASE

3000 - 3004 WHITTIER BLVD. LOS ANGELES, CA 90023



TODD NATHANSON · President

818.501.2212 · todd@illicre.com

DRE #00923779

JACK GARLAND · Associate

818.501.2212 · jack@illicre.com

DRE #02100761



BOYLE HEIGHTS - OFFICE/MEDICAL SPACE FOR LEASE

3000 - 3004 WHITTIER BLVD. LOS ANGELES, CA 90023

PROPERTY FEATURES

- Approx. 2,000 SF office available on prominent corner.
- Former medical clinic.
- High visibility on busy intersection.
- Rear access and dedicated parking in private parking lot.



AREA AMENITIES

- Densely populated area - Over 1,000,000 people within a 5 mile radius.
- 8 Schools within a quarter mile
- Close proximity to the I-10, I-5, 101, 710, and 60 freeways.
- Near Downtown development and Arts District.

DEMOS	1-mile	3-mile	5-mile
Population	51,700	306,106	1,041,609
Annual HH Income	\$43,734	\$45,174	\$49,178
Daytime Population	11,976	266,777	550,385
Traffic Count	±33,000 Cars Per Day		

TODD NATHANSON · President

818.501.2212 · todd@illicre.com

DRE #00923779

JACK GARLAND · Associate

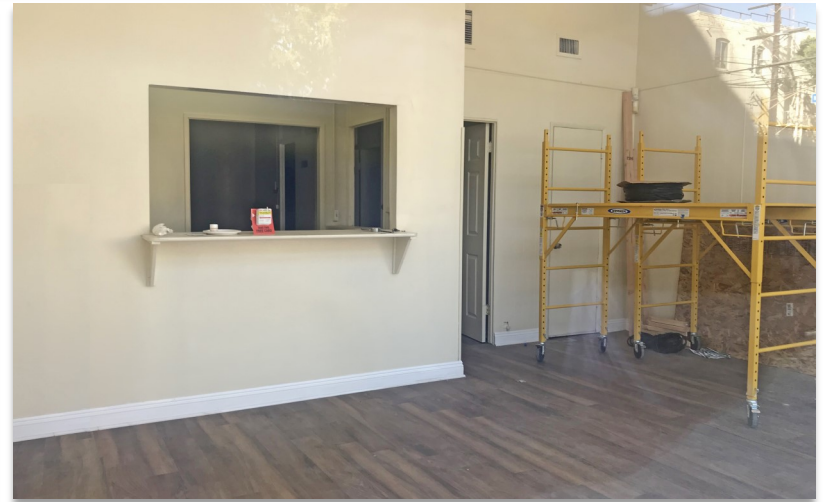
818.501.2212 · jack@illicre.com

DRE #02100761



BOYLE HEIGHTS - OFFICE/MEDICAL SPACE FOR LEASE

3000 - 3004 WHITTIER BLVD. LOS ANGELES, CA 90023



TODD NATHANSON · President

818.501.2212 · todd@illicre.com

DRE #00923779

JACK GARLAND · Associate

818.501.2212 · jack@illicre.com

DRE #02100761



BOYLE HEIGHTS - OFFICE/MEDICAL SPACE FOR LEASE

3000 - 3004 WHITTIER BLVD. LOS ANGELES, CA 90023



TODD NATHANSON · President

818.501.2212 · todd@illicre.com

DRE #00923779

JACK GARLAND · Associate

818.501.2212 · jack@illicre.com

DRE #02100761

