



# Office Spaces For Lease - $\pm 582$ - $\pm 3,467$ SF

**2901 MOORPARK AVENUE  
SAN JOSE, CA**

## Project Highlights

- Convenient Onsite Parking
- Minutes to Santana Row
- Easy Access to Hwy 680 & 880



## Available Spaces

### Suite 200: $\pm 687$ SF

- One (1) Private Office
- One (1) Storage /Work Room
- Balance Open Area
- Corner Unit
- Can be combined with Suite 255 for a total of  $\pm 1,269$  RSF

### Suite 255: $\pm 582$ RSF

- Two (2) Private Offices
- Balance Open Area
- Can be combined with adjacent Suite 200 for a total of  $\pm 1,269$  RSF

### Suite 260: $\pm 939$ SF

- Two (2) Private Offices
- One (1) Storage /Work Room
- Reception /Waiting Area

### Suite 220: $\pm 1,178$ SF

- Three (3) Private Offices
- One (1) Conference Room
- Balance Open Area

### Suite 205: $\pm 1,350$ SF

- Three (3) Private Offices
- One (1) Storage Room
- Balance Open Area
- Can be combined with Suite 220 for  $\pm 3,467$  RSF

*For information, please contact:*

### Geri Wong

Senior Managing Director

t 408-987-4134

geri.wong@nmrk.com

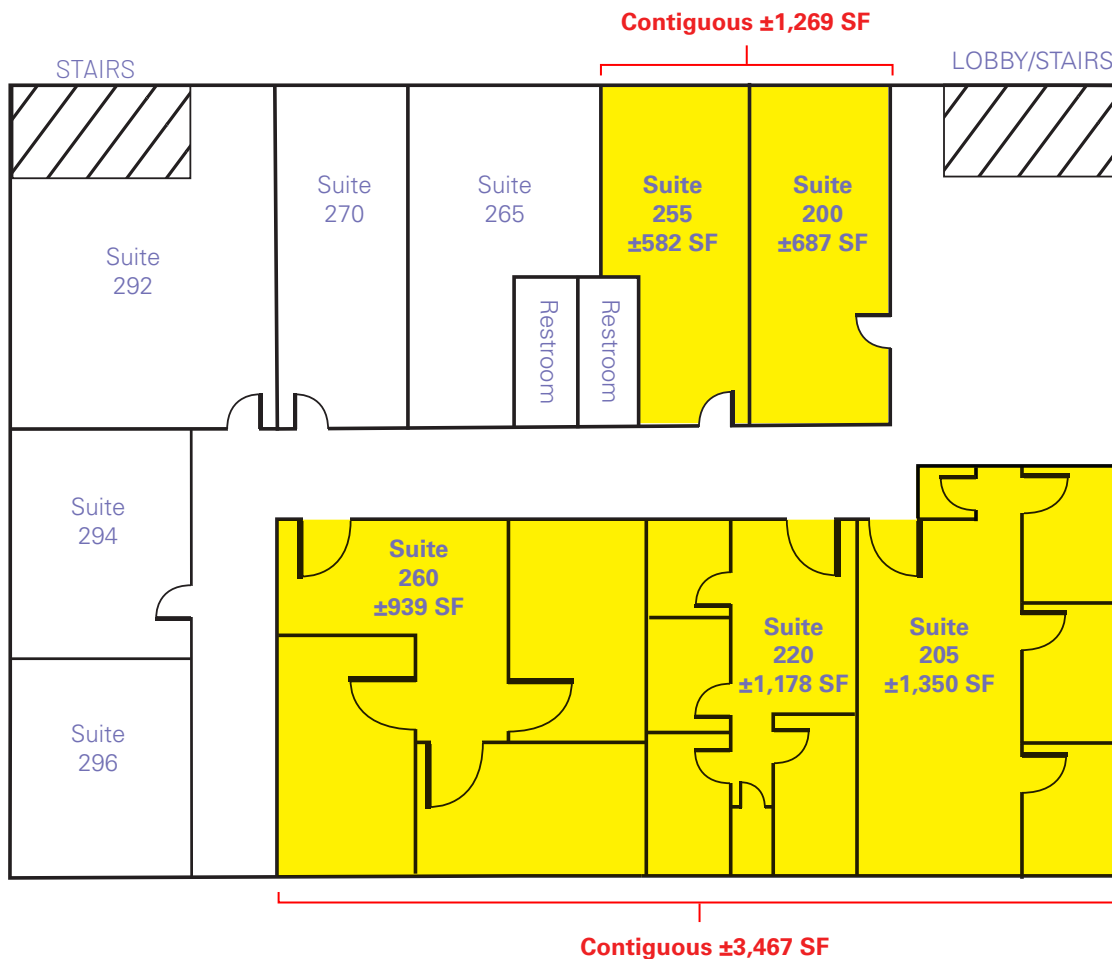
CA RE License #01142432

[nmrk.com](http://nmrk.com)

**NEWMARK**

The distributor of this communication is performing acts for which a real estate license is required. The information contained herein has been obtained from sources deemed reliable but has not been verified and no guarantee, warranty or representation, either express or implied, is made with respect to such information. Terms of sale or lease and availability are subject to change or withdrawal without notice. MP-269 • 10/24

## Floor Plan



\*This floor plan is not drawn to scale.

*For information, please contact:*

**Geri Wong**

Senior Managing Director

t 408-987-4134

geri.wong@nmrk.com

CA RE License #01142432

[nmrk.com](http://nmrk.com)

**NEWMARK**

The distributor of this communication is performing acts for which a real estate license is required. The information contained herein has been obtained from sources deemed reliable but has not been verified and no guarantee, warranty or representation, either express or implied, is made with respect to such information. Terms of sale or lease and availability are subject to change or withdrawal without notice. MP-269 • 10/24