

# OPUS 355

## A DESIGN-LED WORKPLACE



## 355 MAIN STREET | ARMONK, NY

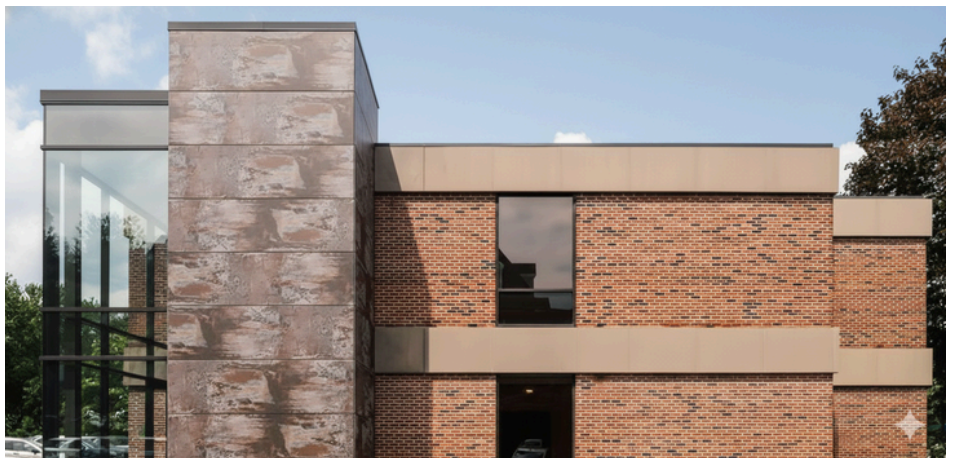
Welcome to Opus 355, a 7,590-square-foot, design-forward workplace in the heart of Armonk. Bright and modern, it's crafted for comfort, connection, and focus—with premium furnishings, flexible suites, and a central club lounge that brings people together.



# ARMONK PROFESSIONAL CENTER



Set just off Main Street in the center of Armonk, 355 and 357 Main Street create a boutique office campus designed for modern professionals. Thoughtfully planned bright, airy, and elevator-served suites are complemented by on-site parking and a serene, professional atmosphere. A short stroll to Armonk's cafés, shops, and everyday amenities, the campus blends neighborhood convenience with connectivity via I-684 and the region's major parkways.

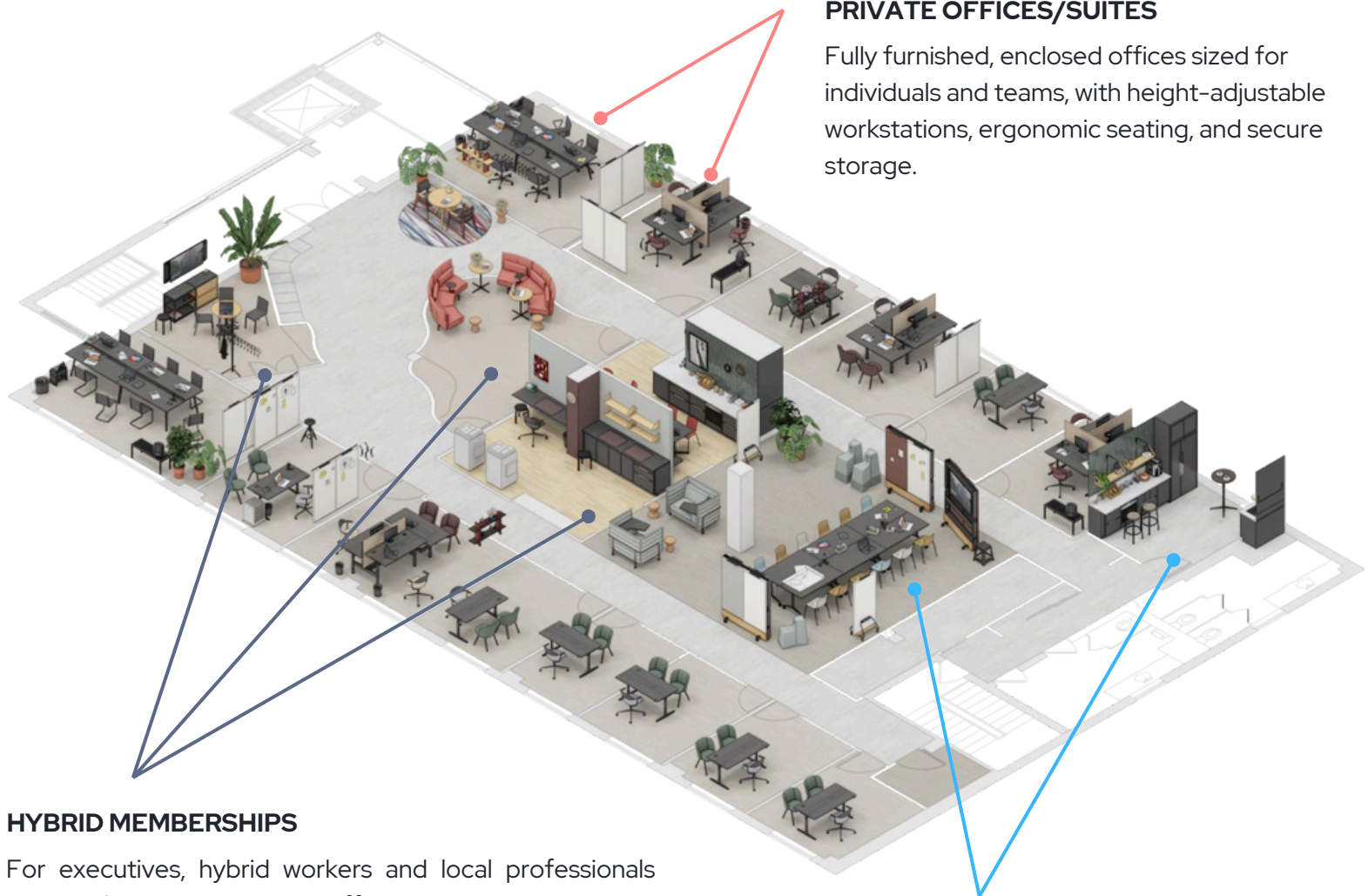




# FORM FOLLOWS FUNCTION

## PRIVATE OFFICES/SUITES

Fully furnished, enclosed offices sized for individuals and teams, with height-adjustable workstations, ergonomic seating, and secure storage.



## HYBRID MEMBERSHIPS

For executives, hybrid workers and local professionals who don't need a dedicated office but want access to the lounge, café, electrified work nooks and meeting rooms.

## OFFSITE / EVENTS

Bookable spaces for workshops, strategy days and client events, with flexible furniture layouts and support from the Opus 355 team.

# WHY OPUS 355

Opus 355 is designed for people who want more from an office than four walls and a door. Here, you get a beautifully curated, move-in ready space in an easy-to-access location, surrounded by like-minded professionals you actually want to bump into in the kitchen or at an evening talk.

Because it's landlord-owned and operated, everything – from furnishings to tech to service – is aligned under one vision and can flex with your team as you grow. It feels less like a traditional office, and more like a private club for getting your best work, relationships, and ideas off the ground.

# MEMBERSHIP AMENITIES

## >Workplace Experience

**Designed for comfort, focus, and flow.**

- Premium, move-in ready furnishings throughout by Vitra + Artek
- State-of-the-art ergonomic chairs and height-adjustable sit/stand desks in every office
- Naturally lit work zones with fully dimmable, scene-based LED lighting
- Dedicated focus rooms and phone rooms for quiet calls and heads-down work
- Thoughtfully zoned spaces that balance privacy, collaboration, and comfort

## >Technology & Support

**Sophisticated tools, seamless connectivity.**

- High-speed, secure Wi-Fi across the entire suite
- Plug-and-play power integrated into desks, lounges, and communal areas (120V / USB-C/ USB-A)
- Shared print / scan station for everyday operations
- On-site ownership and management offering responsive, personalized support

## >Hospitality & Daily Service

**Everything you need to feel at home at work.**

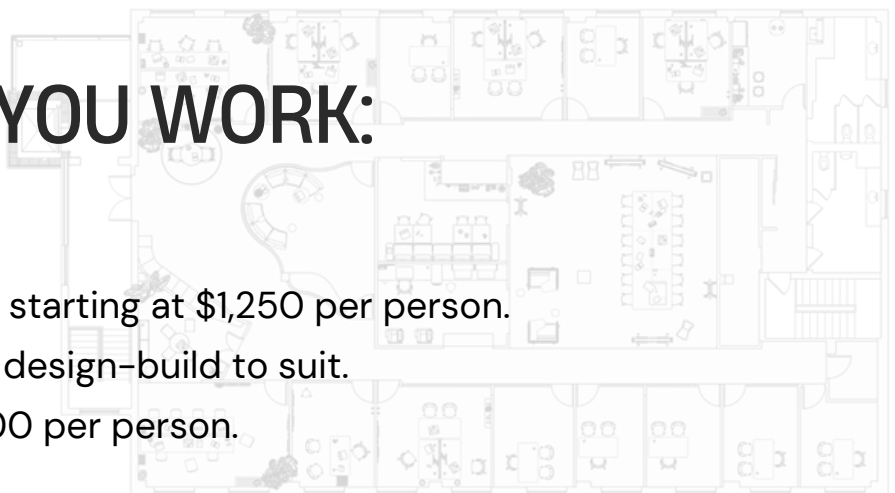
- Ample on-site parking for members and guests
- Stocked café lounge with filtered water, coffee, and tea
- Daily cleaning and full building maintenance
- Mail and package delivery directly to the building

## CHOOSE HOW YOU WORK:

**Private Office** [1-20 people], starting at \$1,250 per person.

**Custom Design-Led Office**, design-build to suit.

**Membership**, starting at \$300 per person.



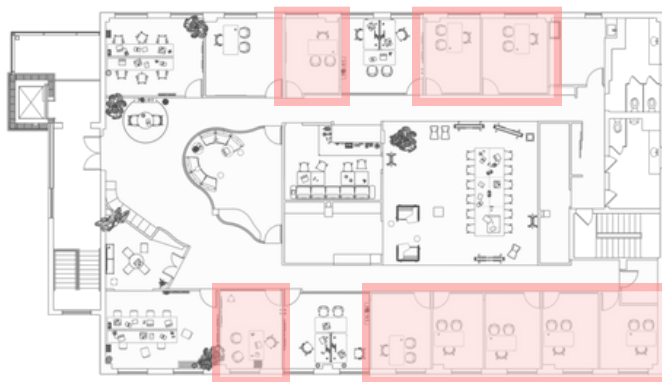


# PRIVATE OFFICE

**SIZE:** 120 - 150 SF

**IDEAL FOR:** 1-2 PEOPLE

**AVAILABLE:** 9 OFFICES



A turnkey private office tailored for modern working styles. With a dedicated workspace, comfortable seating for visitors, and secure storage, it's an ideal setting for focused work, client conversations, and day-to-day operations.



## **Tyde 2, Sit-Stand Table**

Ronan & Erwan Bouroullec

[> Product Page](#)

## **Mynt (Seat Upholstery)**

Erwan Bouroullec

[> Product Page](#)

## **Mikado Side Chair**

Edward Barber & Jay Osgerby

[> Product Page](#)

## **Artek Rocket Bar Stool**

Eero Aarnio

[> Product Page](#)

## **Artek Kaari Wall Hook**

Ronan & Erwan Bouroullec

[> Product Page](#)

## **Happy Bin Small**

Michel Charlot

[> Product Page](#)

## **Follow Me 1**

Antonio Citterio

[> Product Page](#)

## **Dancing Wall**

(Magnetic Whiteboard)

Stephan Hürlemann

[> Product Page](#)

# PRIVATE TEAM SUITE

**SIZE:** 170 - 200 SF

**IDEAL FOR:** 2-3 PEOPLE

**AVAILABLE:** 2 OFFICES



This move-in-ready office for 2–3 people, featuring a shared three-person workstation, two sit/stand desks, and a small meeting table with guest seating. Built for easy collaboration, private work, and team touch points throughout the day.



## **Tyde 2, Sit-Stand Table**

Ronan & Erwan Bouroullec

[> Product Page](#)

## **Mynt (Seat Upholstery)**

Erwan Bouroullec

[> Product Page](#)

## **Mikado Side Chair**

Edward Barber & Jay Osgerby

[> Product Page](#)

## **Rayonnage Mural**

Jean Prouvé

[> Product Page](#)

## **Dancing Wall**

(Magnetic Whiteboard)

Stephan Hürlemann

[> Product Page](#)

## **Artek Kaari Wall Hook**

Ronan & Erwan Bouroullec

[> Product Page](#)



# PRIVATE PRODUCTION SUITE

**SIZE:** 230 - 260 SF

**IDEAL FOR:** 4-6 PEOPLE

**AVAILABLE:** 2 OFFICES



Built for teams that create, build, and collaborate, this suite seats 4–6 comfortably with shared worktables, hardwired power, and room to spread out. Add acoustic panels or multiple monitors to customize the space for production work, it offers the perfect balance of productivity and connection.



Central Powerd Workstations

## Joyn 2 Touchdown

Ronan & Erwan Bouroullec

[> Product Page](#)

## Chair .04

Maarten Van Severen

[> Product Page](#)

## Dancing Wall

(Magnetic Whiteboard)

Stephan Hürlemann

[> Product Page](#)

## Drop Box

Konstantin Grcic

[> Product Page](#)

## Tool Box

Aril Levy

[> Product Page](#)

## Coat Rack «Hang it all»

Charles & Ray Eames

[> Product Page](#)

## Happy Bin Large

Michel Charlot

[> Product Page](#)

# SEMI-PRIVATE CONFERENCE

A closed meeting room with Vitra's Soft Work sofas and Dancing Wall creates a relaxed, living-room style setting for presentations and workshops. Flexible cork stools and side tables support laptops, notes, and coffee, making it ideal for hybrid meetings and creative sessions.



## **Soft Work Sofa**

Edward Barber & Jay Osgerby

[> Product Page](#)

## **Soft Work Table**

Edward Barber & Jay Osgerby

[> Product Page](#)

## **Cork Family, Model A | Model D**

Jasper Morrison

[> Product Page](#)





# SHARED CAFÉ

For members, the lounge doubles as an informal meeting zone—perfect for one-on-ones, quick team huddles, or welcoming a guest before moving into a private office or conference room. It's also a natural setting for hosted moments: morning coffee gatherings, end-of-day meetups, or small community events that bring Opus 355 together.



## Soft Work Sofa

Edward Barber & Jay Osgerby

[> Product Page](#)

## HAL RE Tube

Jasper Morrison

[> Product Page](#)

## Super Fold Table

Jasper Morrison

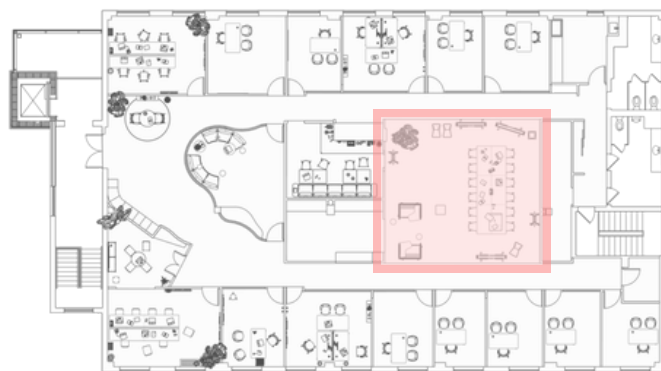
[> Product Page](#)



**vitra. artek louis poulsen**

# SHARED DYNAMIC SPACES

The shared open office is designed as a truly dynamic space – a flexible zone that can shift from focused work to project collaboration, workshops, or town hall–style gatherings in minutes. With mobile walls, stackable seating, and agile work tables, teams can reconfigure the environment as their needs evolve, creating a living workspace.



Presentation  
[10-12 people]



Stand-up Meeting  
[4-6 people]



Meeting Space  
[20 people]



Symposium  
[28 people]



## Dancing Wall

Stephan Hürlemann

[> Product Page](#)

## Stool-Tool

Konstantin Grcic

[> Product Page](#)

## MedaMorph Folding Table

Alberto Meda

[Product Page](#)

## Dancing Wall Trolley

Stephan Hürlemann

[Product Page](#)

## Alcove Work Lowback

Ronan & Erwan Bouroullec

[> Product Page](#)

## HAL RE Tube

Jasper Morrison

[> Product Page](#)

## Chap

Konstantin Grcic

[> Product Page](#)



# LOCATED IN THE HEART OF ARMONK



## > Coffee & Cafés

<b>Bluestone Lane Armonk Café</b>	0.4 mi
<b>Tazza Café</b>	0.2 mi

## > Restaurants

<b>Meraki Taverna</b>	0.3 mi
<b>Casa Tequila Cocina &amp; Bar</b>	0.3 mi
<b>The Beehive Restaurant</b>	0.4 mi
<b>Moderne Barn</b>	0.7 mi

## > Everyday Services

<b>CVS Pharmacy</b>	0.3 mi
<b>Armonk Post Office (USPS)</b>	0.2 mi

## > Banking Services

<b>Chase Bank</b>	0.2 mi
<b>Bank of America</b>	0.2 mi
<b>Citibank</b>	0.3 mi
<b>Wells Fargo</b>	0.4 mi

Steps to Main Street Dining • Everyday Errands, All Right Here • Central, Connected, Convenient



## **CONTACT US:**

For tours, memberships, and availability:

**212-686-2015**

**[leasing@opus355.com](mailto:leasing@opus355.com)**

**[www.opus355.com](http://www.opus355.com)**