

Land for Sale



Site 506-33-535

Site 506-33-529

W Salome Hwy

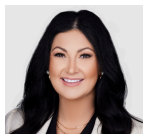
N 435<sup>th</sup> Ave

W Belleview St

W Salome Hwy

**SEC Salome Hwy & 435th Ave**  
**±72.13 AC (3,141,896 SF)**

For More Information



**Ciara Cline**  
(602) 618-4263  
ccline@cresa.com



**Ted Liles, SIOR**  
(562) 756-8359  
tliles@cresa.com

**cresa**



## SEC Salome Hwy & 435th Ave

Maricopa County

**Location:** Maricopa County - SEC Salome Hwy & 435th Ave

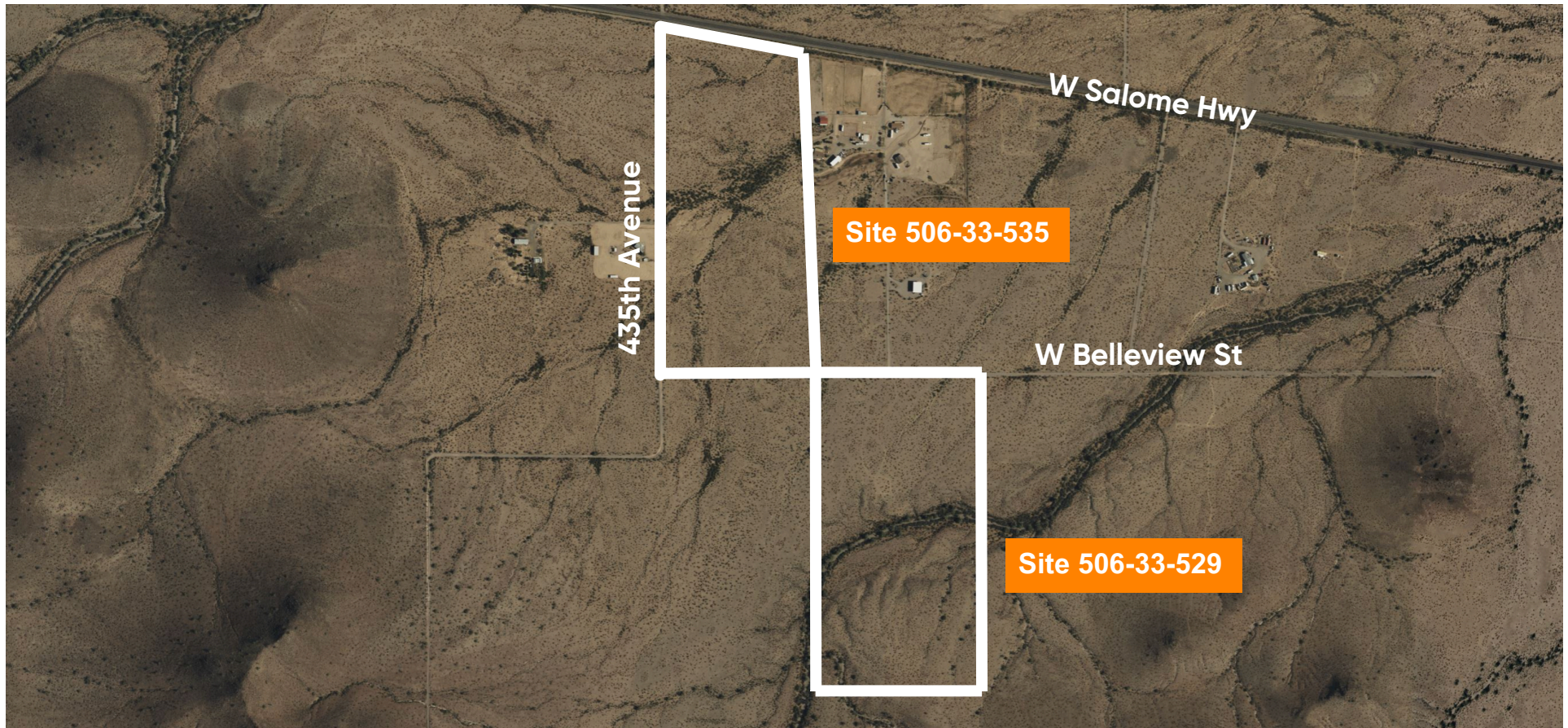
**Zoning:** RU-43

**Land Area:** ±72.13 AC (3,141,896 SF)

**Utilities & Infrastructure:** Buyer to verify availability and capacity

**APN:** 506-33-535 & 506-33-529 (Parcels can be sold separately)

**Asking Price:** Call for pricing

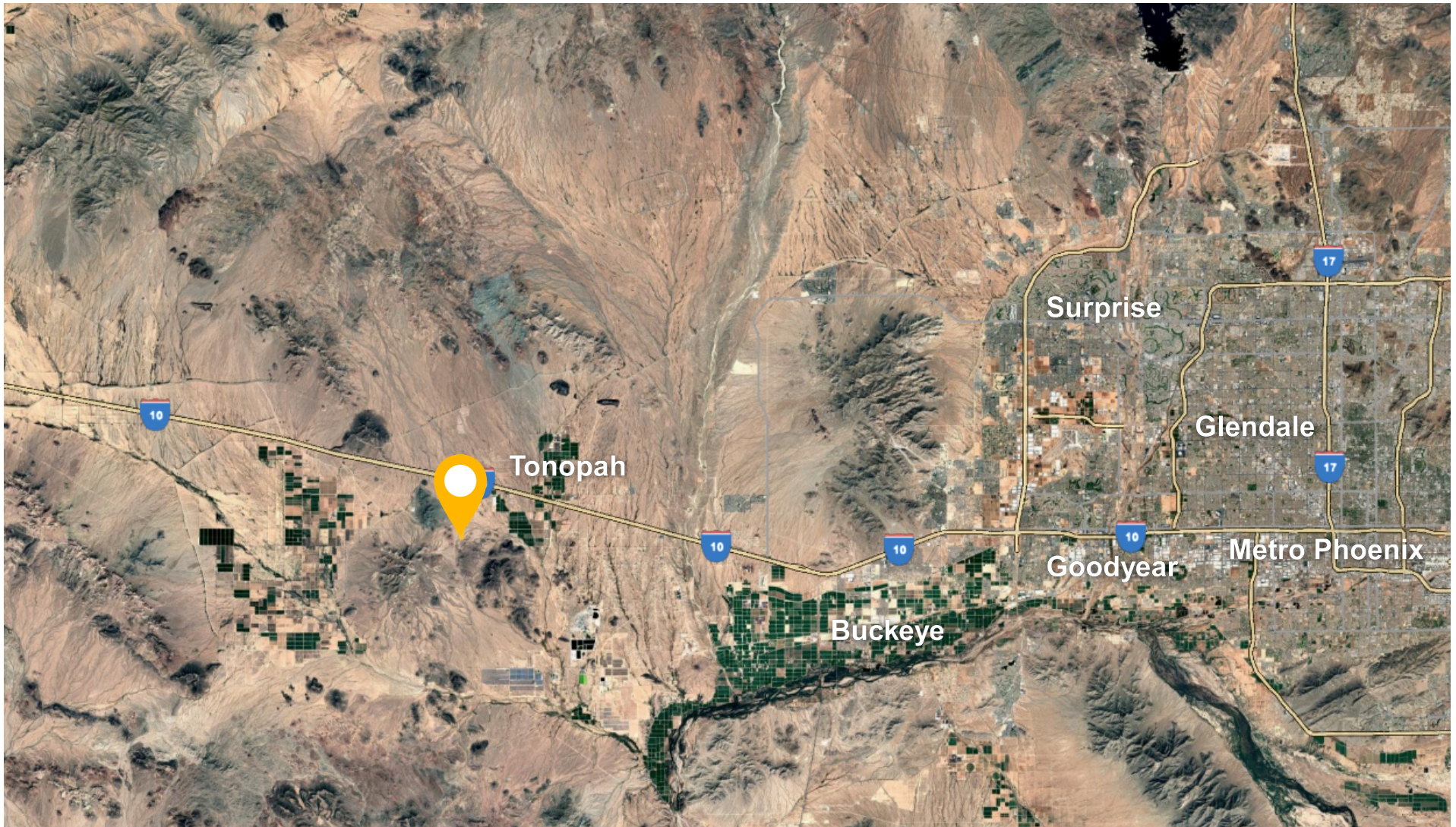


Disclaimer: Cresa © 2025. All rights reserved. The information contained in this document has been obtained from sources believed reliable. While Cresa does not doubt its accuracy, Cresa has not verified it and makes no guarantee, warranty, or representation about it. It is your responsibility to independently confirm its accuracy and completeness. Any projections, opinions, assumptions or estimates used are for example only and do not represent the current or future performance of the property. The value of this transaction to you depends on tax and other factors which should be evaluated by your tax, financial and legal advisors. You and your advisors should conduct a careful, independent investigation of the property to determine to your satisfaction the suitability of the property for your needs.



## SEC Salome Hwy & 435th Ave

Maricopa County



Disclaimer: Cresa © 2025. All rights reserved. The information contained in this document has been obtained from sources believed reliable. While Cresa does not doubt its accuracy, Cresa has not verified it and makes no guarantee, warranty, or representation about it. It is your responsibility to independently confirm its accuracy and completeness. Any projections, opinions, assumptions or estimates used are for example only and do not represent the current or future performance of the property. The value of this transaction to you depends on tax and other factors which should be evaluated by your tax, financial and legal advisors. You and your advisors should conduct a careful, independent investigation of the property to determine to your satisfaction the suitability of the property for your needs.