

# WOODLAND OFFICE PARK

MW

FOR LEASE



## PROPERTY DETAILS

1536 NORTH WOODLAND PARK BOULEVARD, LAYTON, UTAH 84041

**LEASE RATE: \$14.00/SF NNN**

### BUILDING 1536

- Suite 230: 4,268 SF
  - » Garden level
  - » Recently renovated
- Located just north of Layton Hills Mall
- Centrally located between Ogden and Salt Lake City
- Many nearby amenities
- \$7.25/SF operating expenses
- Tenant pays in-suite janitorial services



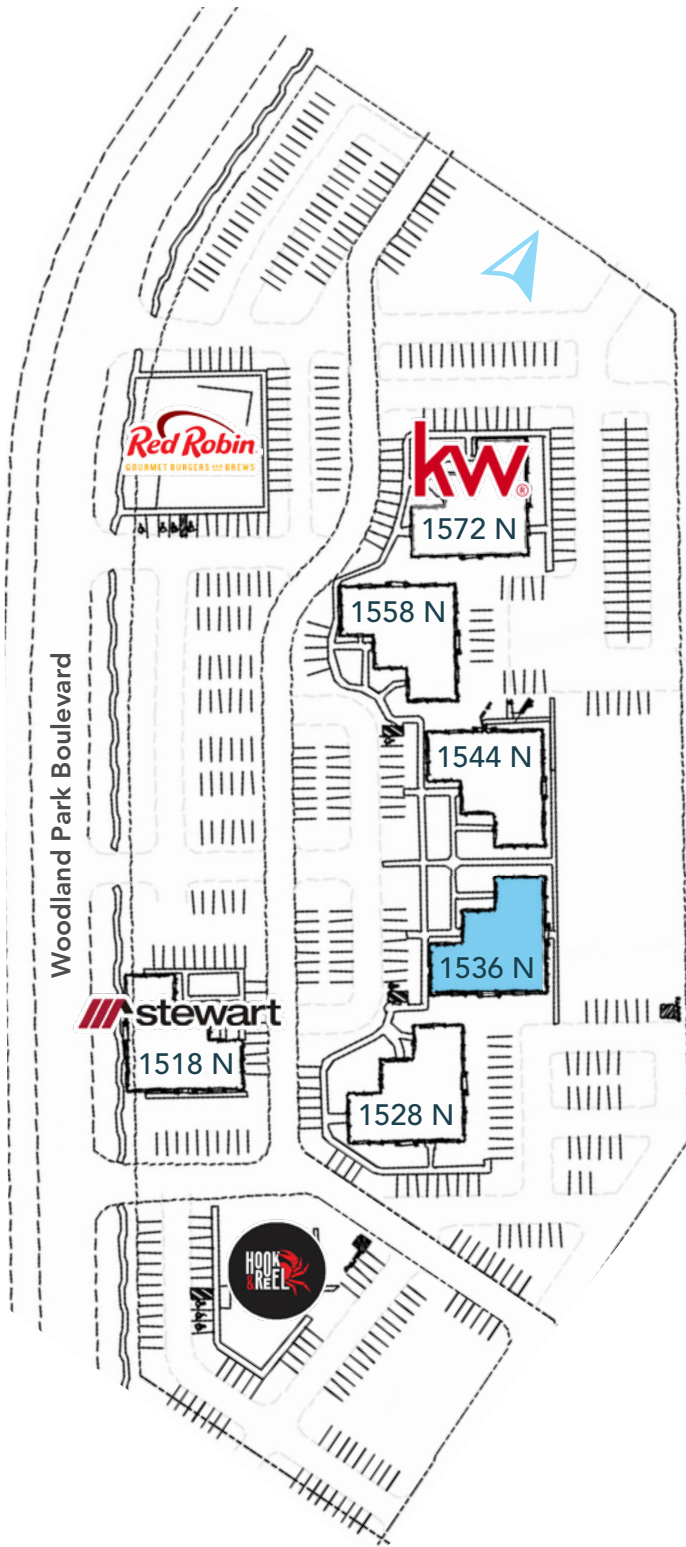
**MOUNTAIN WEST**  
COMMERCIAL REAL ESTATE

**CHRIS FALK, CCIM, SIOR**  
cfalk@mwcre.com  
direct 385.429.5500  
[View Profile](#)

**BRAXTON WILLIE, CCIM**  
bwillie@mwcre.com  
direct 385.429.5501  
[View Profile](#)

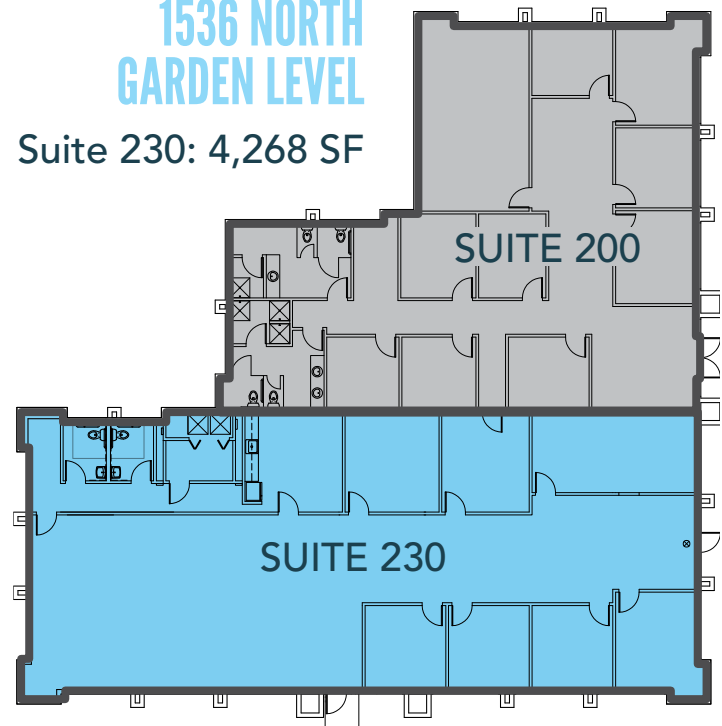
# WOODLAND OFFICE PARK

MW



## 1536 NORTH GARDEN LEVEL

Suite 230: 4,268 SF



**MOUNTAIN WEST**  
COMMERCIAL REAL ESTATE

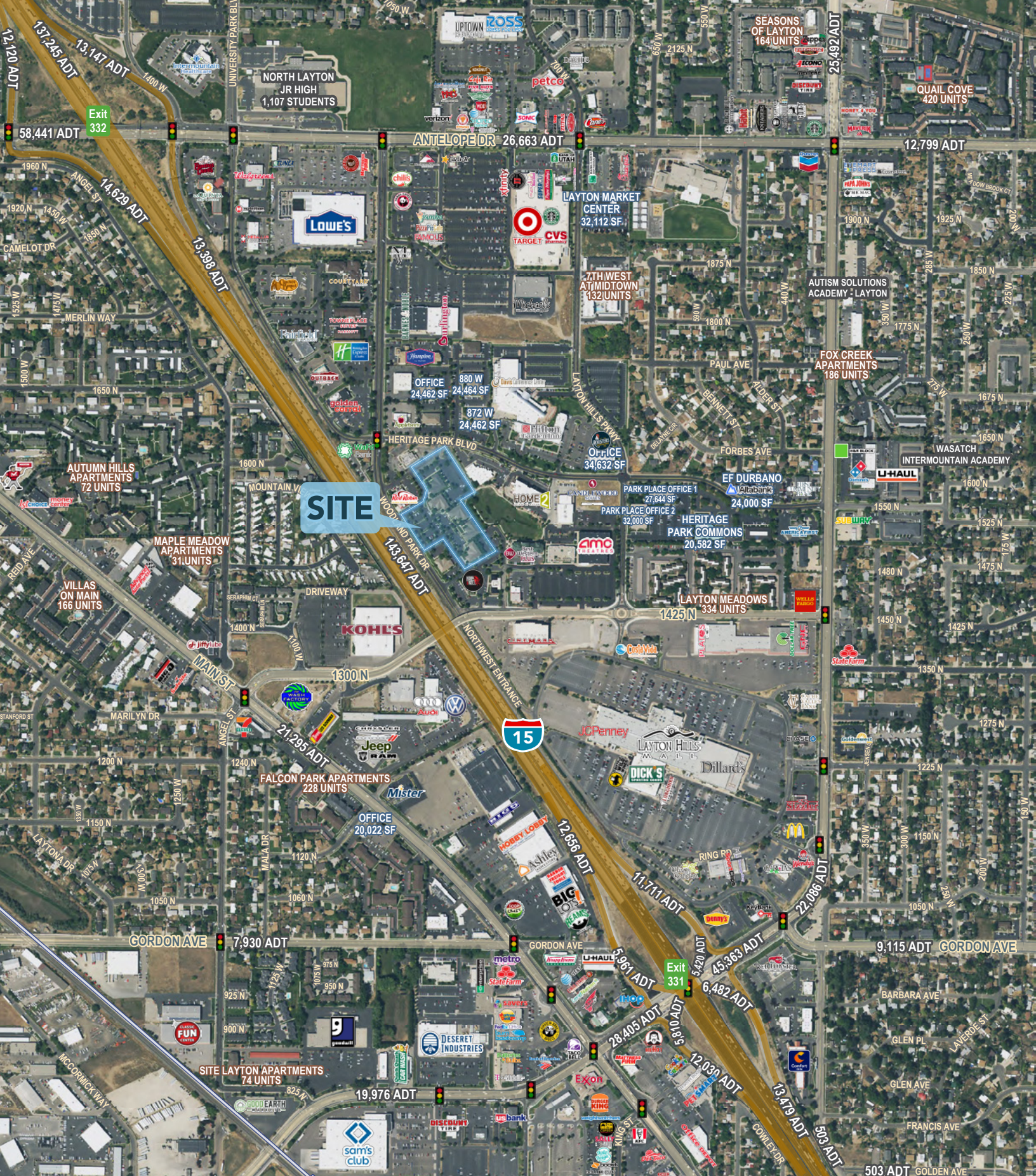
**CHRIS FALK, CCIM, SIOR**

cfalk@mwcre.com  
direct 385.429.5500  
[View Profile](#)

**BRAXTON WILLIE, CCIM**

bwillie@mwcre.com  
direct 385.429.5501  
[View Profile](#)





**MOUNTAIN WEST**  
COMMERCIAL REAL ESTATE

**CHRIS FALK, CCIM, SIOR**  
cfalk@mwcre.com  
direct 385.429.5500  
[View Profile](#)

**BRAXTON WILLIE, CCIM**  
bwillie@mwcre.com  
direct 385.429.5501  
[View Profile](#)