



3000 Sand Hill Road, Building 3, Suite 290 Menlo Park



Bret Yerkovich

+1 650 480 2229

Bret.Yerkovich@am.jll.com
RE License #01916826

Chris Owusu

+1 805 218 5420

Chris.Owusu@am.jll.com
RE License #02104817

Connor McClean

+1 971 713 0839

Connor.Mcclean@am.jll.com
RE License #02236341

AVAILABLE FOR SUBLEASE
Suite 290 +/-11,845 RSF

PROPERTY HIGHLIGHTS



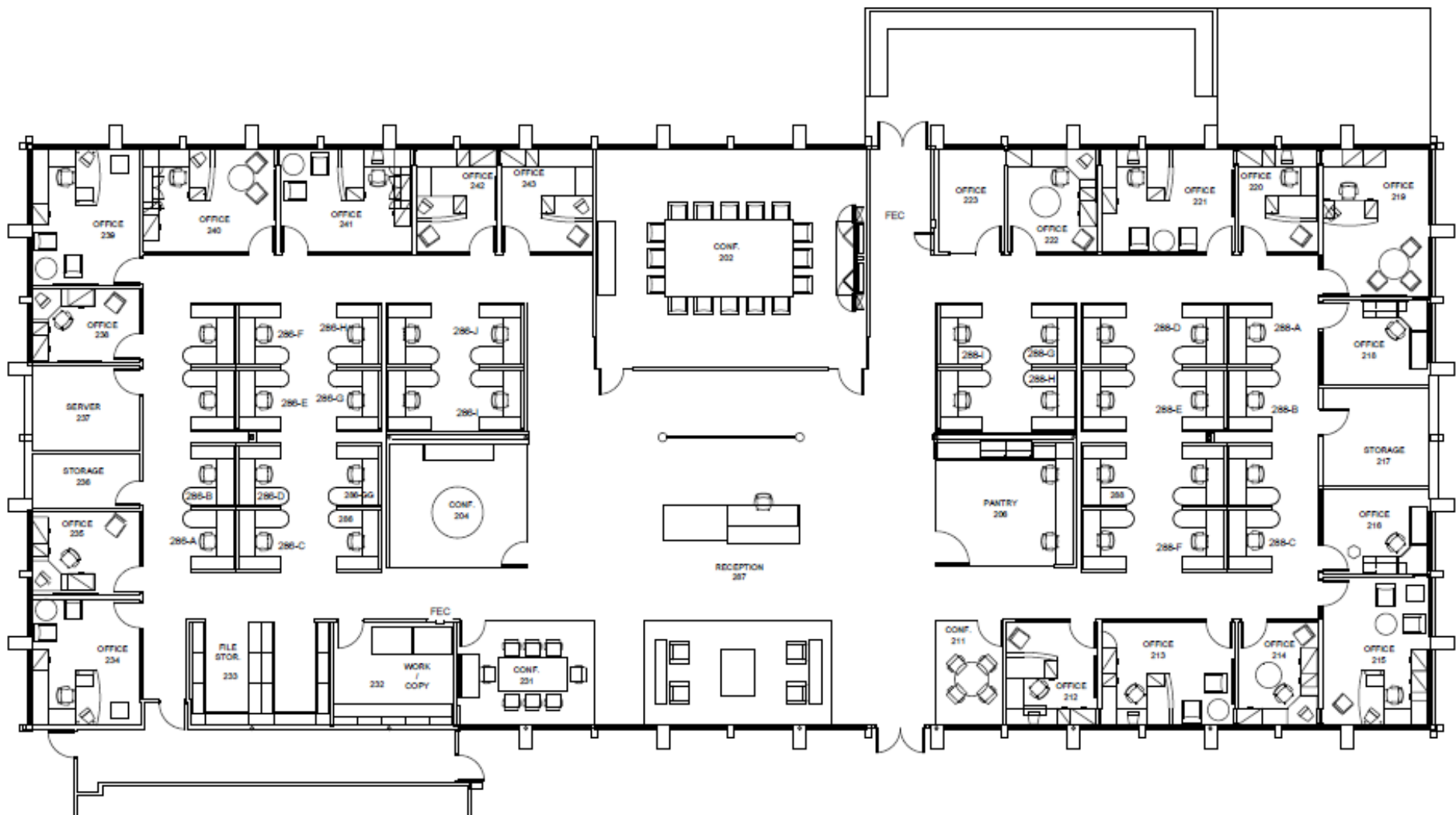
- Available now
- 11,845 RSF
- Plug & play sublease
- Lease expiration 2/28/2027
- Top floor space with panoramic views
- Recently renovated exterior courtyard
- Fitness and conference facilities on-site
- Surrounded by the 18-hole Sharon Heights Golf and Country Club
- Full-service restaurant with catering services for tenants
- Credit sublessor



SECOND FLOOR ± 11,845 RSF



- Double Ceiling Height Entrance & Lobby
- Existing Professional Services Buildout
- 32 Workstations
- Oversized Board Room
- 19 Private Offices/ 4 Conference Rooms

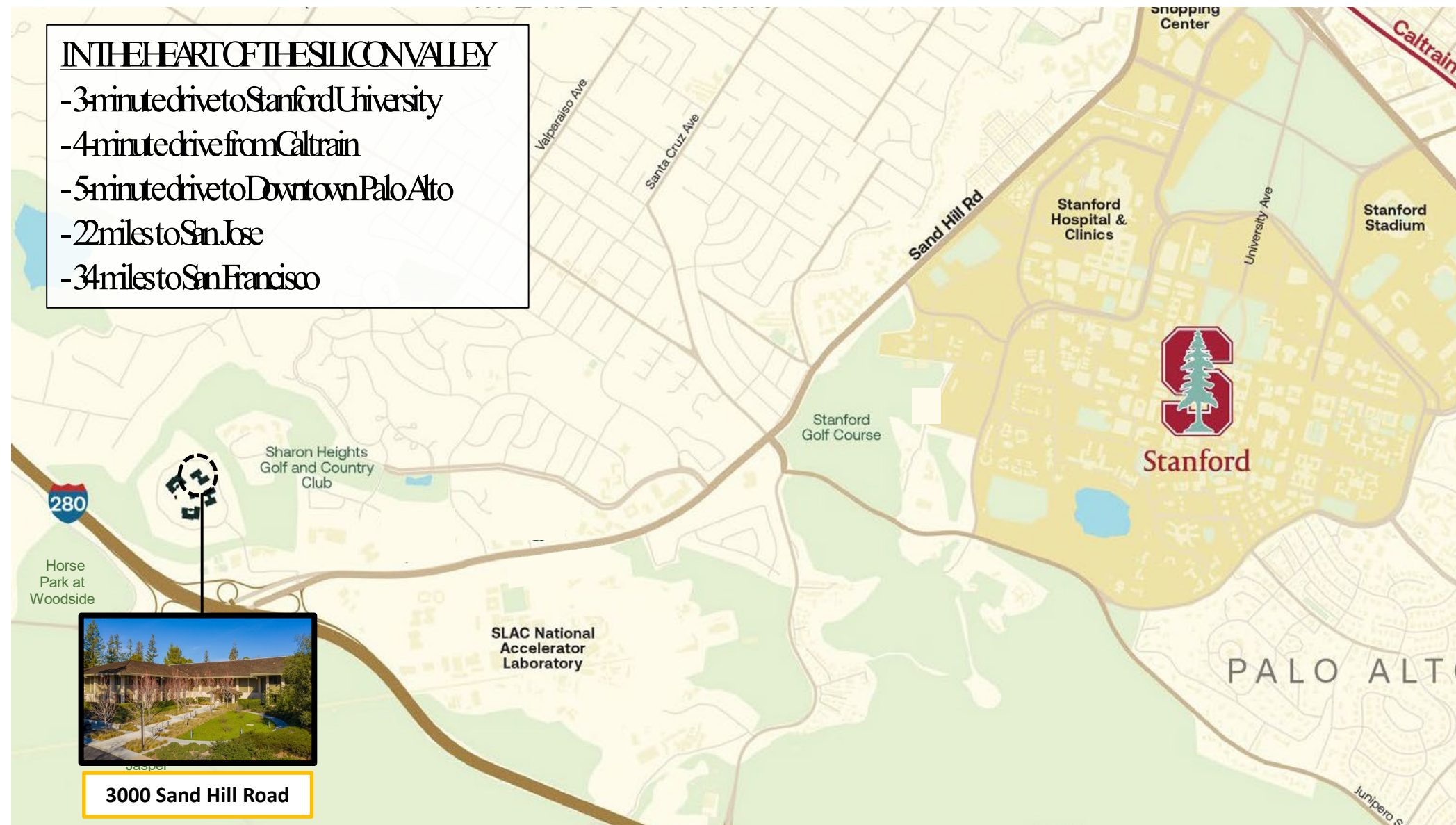


3000 SAND HILL - THE RANCH



IN THE HEART OF THE SILICON VALLEY

- 3 minute drive to Stanford University
- 4 minute drive from Caltrain
- 5 minute drive to Downtown Palo Alto
- 22 miles to San Jose
- 34 miles to San Francisco



PHOTOS





Bret Yerkovich

+1 650 480 2229

Bret.Yerkovich@am.jll.com

RE License #01916826

Chris Owusu

+1 805 218 5420

Chris.Owusu@am.jll.com

RE License #02104817

Connor McClean

+1 971 713 0839

Connor.Mcclean@am.jll.com

RE License #02236341



Jones Lang LaSalle Brokerage, Inc.
RE License #01856260