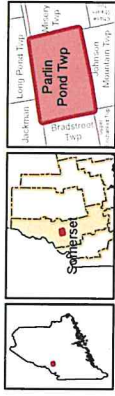


Parlin Pond Twp.

T3 R7 BKP WKR
Somerset County



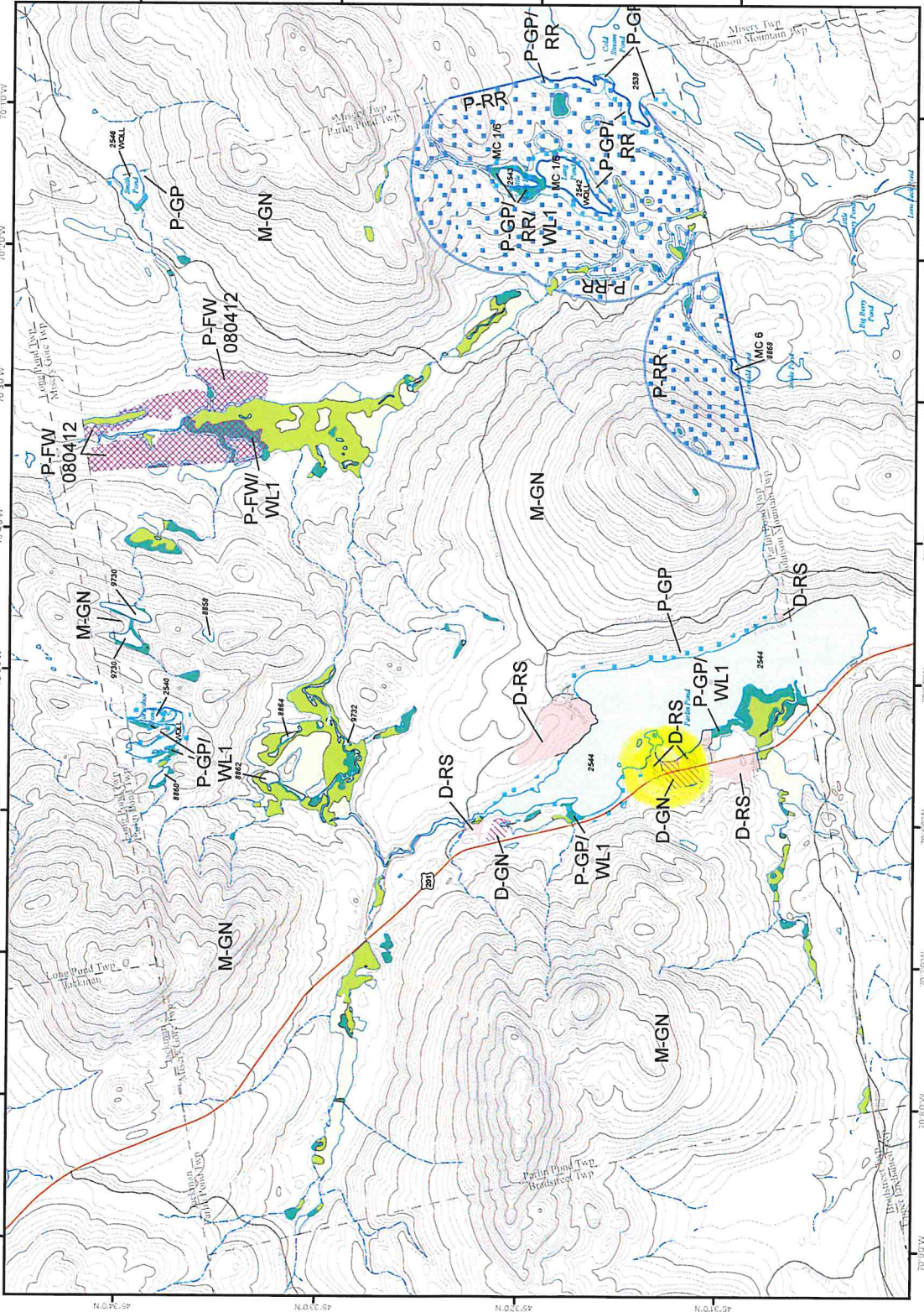
Land Use Guidance Map
Department of Agriculture, Conservation and Forestry
Maine Land Use Planning Commission

Legend

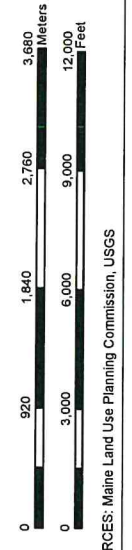
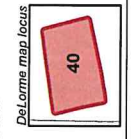
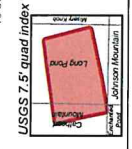
- DEVELOPMENT SUBDISTRICTS**
 - D-GN: General
 - D-RS: Residential
- MANAGEMENT SUBDISTRICTS**
 - M-GN: General
- PROTECTION SUBDISTRICTS**
 - P-FW: Fish and Wildlife
 - P-GP: Great Pond
 - P-RR: Recreation
 - P-SL2: Shoreland - 75'
 - P-WL1: Wetlands of Special Significance
 - P-WL2: Scrub-shrub Wetlands
 - P-WL3: Forested Wetlands

This map does not show all designated P-WL Subdistricts, such as non-tidal water bodies and freshwater wetlands within 25 feet of flowing waters.
This map is a georectified version and should not be considered definitive. Full sized, official Land Use Guidance Maps are available on the LUPC website or by request.

Location #	Zone/Code	Effective Date	Remarks
1		08/18/2005	Adoption of digital NWI wetlands



- Map amendment location: 100' buffer around 25' buffer
- Symbol: 1/4" = 1" scale
- MIDAS number: Unique number assigned to each standing body of water in Maine.
- Water Quality Limiting Lake - Refer to Section 10.23.E.2.g of the Commission's Land Use Rules and Standards (10.23.E.2.g) for more information.
- WOLL: Water Quality Limiting Lake - Refer to Section 10.23.E.2.g of the Commission's Land Use Rules and Standards (10.23.E.2.g) for more information.
- MC#: Management Class - Refer to Section 10.23.E.2.g of the Commission's Land Use Rules and Standards (10.23.E.2.g) for more information.



SOURCES: Maine Land Use Planning Commission, USGS