

The Edgewater Building - 600 S Magnolia Avenue

Located in the heart of Tampa's Hyde Park Neighborhood, the Edgewater Building is a three story, 20,000 SF office building built in 1924. Originally constructed as the Hotel Cargyle, the building was converted to office in 1994. The Edgewater Building is now a historic icon located only one block from Bayshore Boulevard.



For Lease Contact:

Allie Kessler

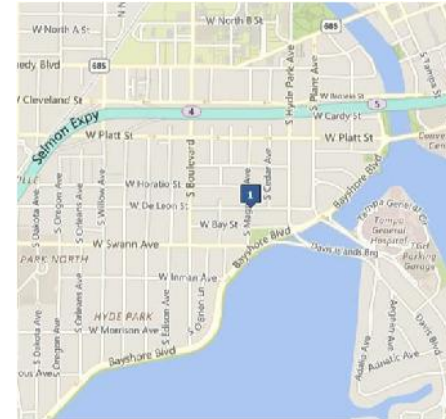
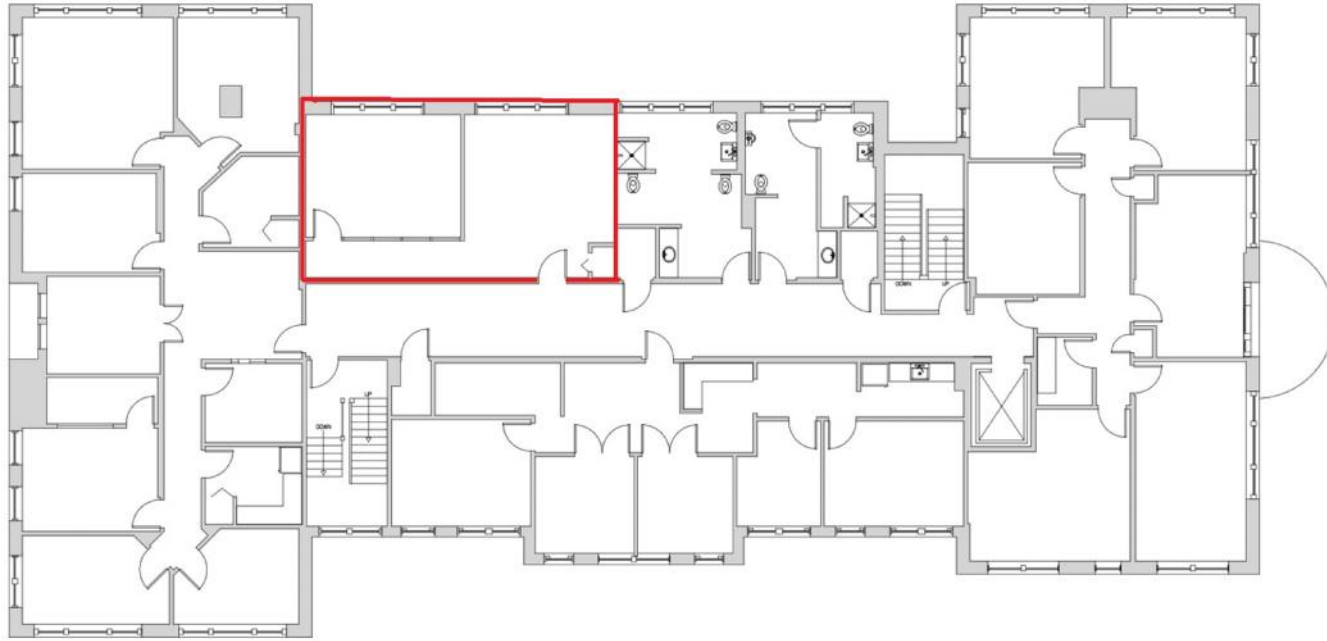
813.766.1987

allie@bayvilladevelopers.com



The Edgewater Building - 600 S Magnolia Avenue

Suite 275 – 818 SF



For Lease Contact:

Allie Kessler

813.766.1987

allie@bayvilladevelopers.com

