

NEWPORT JERSEY CITY RETAIL SPACE FOR LEASE

1,022 SF High Foot Traffic Retail Location

100 Town Square Pl, Jersey City, NJ 07310

NEWPORT NEIGHBORHOOD



EXCLUSIVE LEASING BROKER



Bobby Antonicello Jr.
Licensed Real Estate Broker
bobby@gridcre.com
(551) 795-2836

Ray Kawas
Commercial Leasing
RKawas@lefrakcommercial.com
(201) 626-4348

Tim Johnson
Commercial Leasing
TJohnson@lefrakcommercial.com
(201) 626-4348





SPACE DETAILS:

100 TOWN SQUARE PL, JERSEY CITY, NJ 07310

SIZE AVAILABLE:

Retail - 1,022 SF

SPACE CONDITION:

Fully Built Out Retail Space

EXISTING CONDITIONS:

- 1 ADA Restroom
- 2 Entrances
- 3 Compartment Sink
- Kitchen Area (No Hood)
- Electric Distribution
- HVAC Distribution
- Water Distribution
- Counter Tops
- Lighting

POSSESSION:

2026 - Q1

FRONTAGE:

30 Ft along River Street - End Cap

CEILING HEIGHT:

12 FT - 14 FT

PARKING:

Hourly parking located next door

LEASE TYPE:

Modified Gross

ASKING RENT:

Upon Request



NEIGHBORHOOD & HIGHLIGHTS:

- Prime Newport location in the heart of Jersey City's booming waterfront district.
- Less than 5-minute walk to Newport PATH Station – direct 8-minute ride to Manhattan.
- Under 15-minute walk to Hoboken PATH & Terminal – multiple Manhattan access points.
- 4-minute walk to NY Waterway Ferry terminal – scenic 8-minute ferry ride to Lower Manhattan.
- Surrounded by 15,000+ luxury residential units and growing – built-in customer base on your doorstep.
- Steps from Newport Centre Mall, Target, AMC Theatres, and 50+ shops & restaurants.
- Directly across from Newport Green Park – 4-acre urban beach park with carousel and stunning Manhattan views.
- Walking distance to major employers: Fidelity Investments, JPMorgan Chase, Forbes, Bank of America, and more.
- 24/7 neighborhood with high foot traffic, concierge buildings, and strong daytime + evening population.
- One of the safest and most accessible medical/retail locations on the Hudson River Gold Coast.

1 MIN



WALK TO
WASHINGTON BLVD
BUS STOP TO NYC

4 MIN



DRIVE TO HOLLAND
TUNNEL

1 MIN



WALK TO NEWPORT
PATH TERMINAL

10 MIN



WALK TO FERRY

8 MIN



FERRY RIDE TO MIDTOWN

100 TOWN SQUARE PL - AERIAL:

NEWPORT IS A CITY UNTO IT SELF WITH OVER 6,000,000 SF OF OFFICE, OVER 1,500,000 SF OF RETAIL AND OVER 6,500 RESIDENTIAL UNITS.

THE NEWPORT PATH STATION HAS MORE THAN 5,500,000 ANNUAL PASSENGERS.

THE NEWPORT CENTRE IN JERSEY CITY IS HOME TO NATIONAL RETAILERS SUCH AS KOHLS, MACY'S, AMC THEATRE, ZARA, H&M, CHIC-FIL-A, ADIDAS, ZIN BURGER, AND MORE.

SOUTH EAST VIEW

100 TOWN SQUARE PL.

An aerial photograph of Jersey City, New Jersey, taken from a south-east perspective. The image shows the dense urban landscape of the city, with numerous high-rise buildings and residential structures. The Hudson River is visible in the foreground, separating Jersey City from New York City. The New York City skyline, including the Freedom Tower, is visible in the background across the water. A red dot and line point to the location of 100 Town Square Pl. in the foreground.

100 TOWN SQUARE PL - AERIAL:



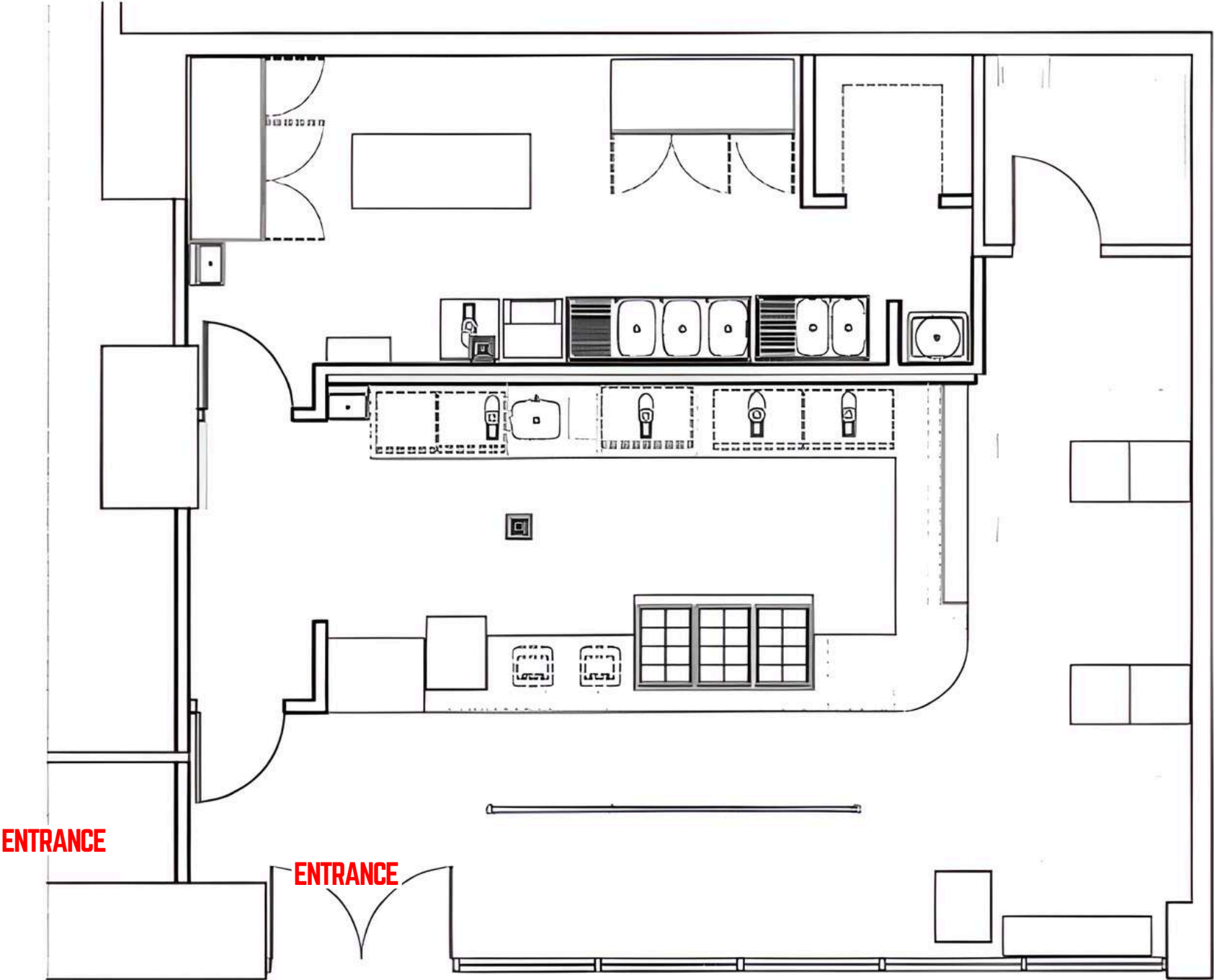
EAST VIEW

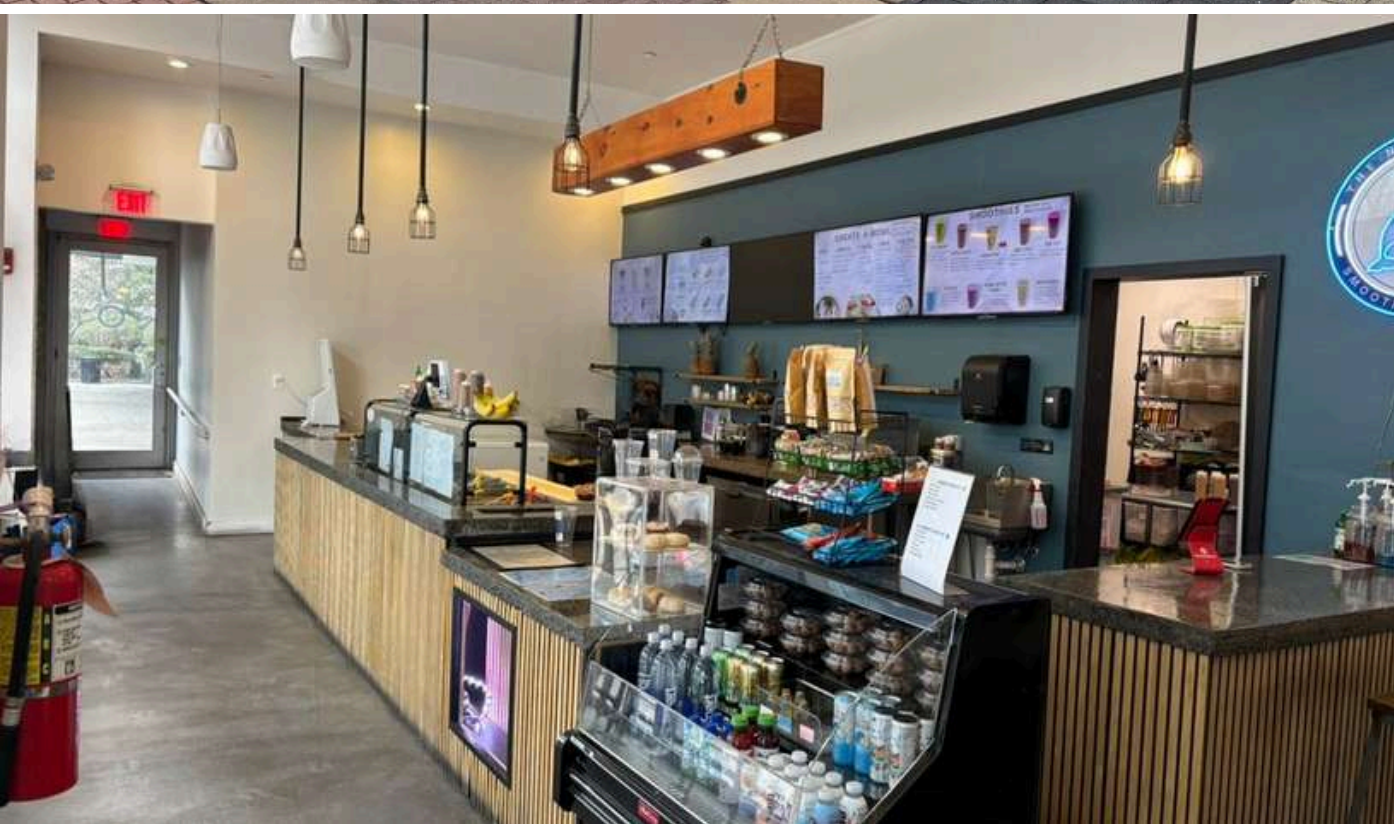
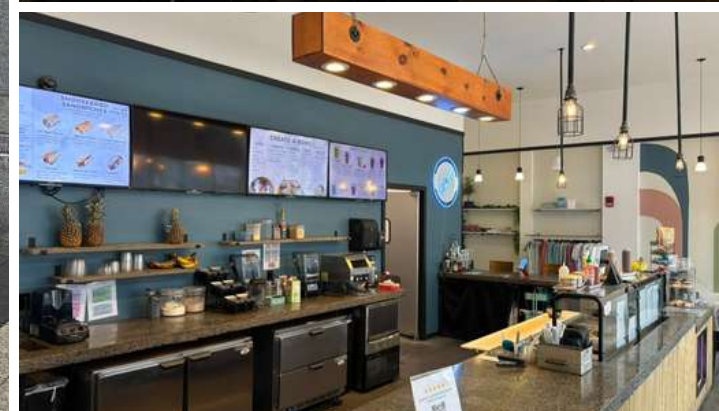
100 TOWN SQUARE PL - AERIAL:

SOUTH EAST VIEW

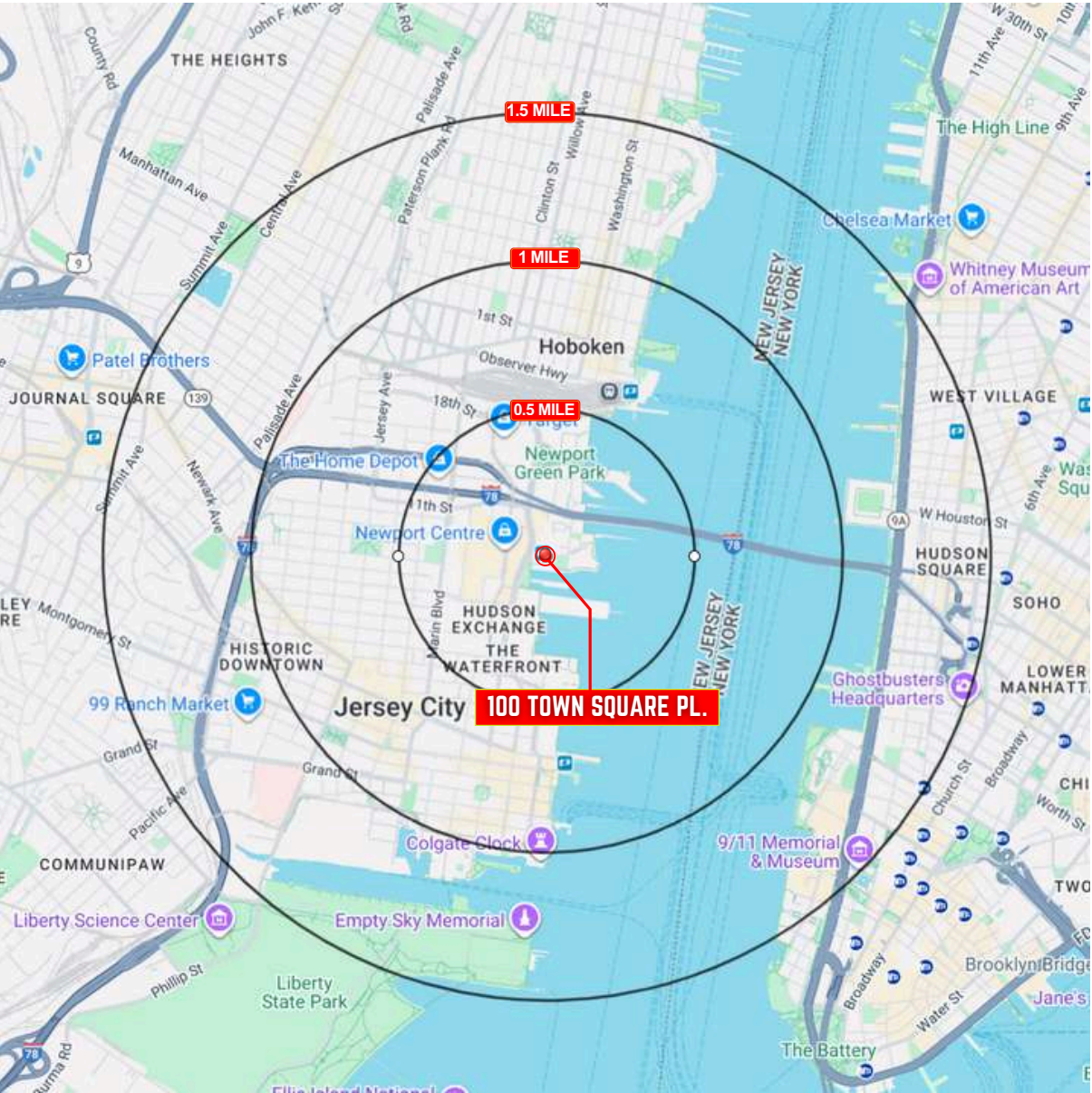


100 TOWN SQUARE PL - FLOOR PLAN:





DEMOGRAPHICS:



0.5 MILE RADIUS

| | |
|---|--|
| POPULATION | TOTAL BUSINESSES |
| 34,734 | 1,362 |
| HOUSEHOLDS | TOTAL EMPLOYEES |
| 18,004 | 19,145 |
| MEDIAN AGE | DAYTIME POPULATION (w/ 16 yr +) |
| 33.7 | 24,970 |
| COLLEGE GRADUATES (Bachelor's +) | AVERAGE HOUSEHOLD INCOME |
| 20,648 - 74.7% | \$154,002 |

1 MILE RADIUS

| | |
|---|--|
| POPULATION | TOTAL BUSINESSES |
| 71,740 | 3,033 |
| HOUSEHOLDS | TOTAL EMPLOYEES |
| 35,439 | 51,097 |
| MEDIAN AGE | DAYTIME POPULATION (w/ 16 yr +) |
| 33.4 | 64,808 |
| COLLEGE GRADUATES (Bachelor's +) | AVERAGE HOUSEHOLD INCOME |
| 41,459 - 73.9% | \$154,561 |

1.5 MILE RADIUS

| | |
|---|--|
| POPULATION | TOTAL BUSINESSES |
| 131,657 | 5,672 |
| HOUSEHOLDS | TOTAL EMPLOYEES |
| 61,546 | 75,575 |
| MEDIAN AGE | DAYTIME POPULATION (w/ 16 yr +) |
| 33.8 | 105,010 |
| COLLEGE GRADUATES (Bachelor's +) | AVERAGE HOUSEHOLD INCOME |
| 65,858 - 66.1% | \$136,380 |

NEWPORT NEIGHBORHOOD

100 TOWN SQUARE PL, JERSEY CITY, NJ 07310



GRIDCRE.COM



CONTACT AGENT:

BOBBY ANTONICELLO JR.

LICENSED REAL ESTATE BROKER

Bobby@gridcre.com

(551) 795-2836

RAY KAWAS

COMMERCIAL LEASING

RKawas@lefrakcommercial.com

(201) 626-4348

TIM JOHNSON

COMMERCIAL LEASING

TJohnson@lefrakcommercial.com

(201) 626-4348

GRID REAL ESTATE LLC DISCLAIMER. THE INFORMATION CONTAINED HEREIN HAS BEEN OBTAINED FROM SOURCES WE BELIEVE TO BE RELIABLE. HOWEVER, WE HAVE NOT INDEPENDENTLY VERIFIED IT AND MAKE NO GUARANTEES, WARRANTIES, OR REPRESENTATIONS AS TO ITS ACCURACY OR COMPLETENESS. ANY PROJECTIONS, RENDERINGS, OPINIONS, ASSUMPTIONS, OR ESTIMATES ARE PROVIDED FOR ILLUSTRATIVE PURPOSES ONLY AND DO NOT REFLECT OR GUARANTEE THE CURRENT OR FUTURE PERFORMANCE OF THE PROPERTY. PROSPECTIVE PURCHASERS, LESSEES, AND THEIR ADVISORS ARE URGED TO CONDUCT THEIR OWN THOROUGH, INDEPENDENT INVESTIGATION OF THE PROPERTY TO DETERMINE ITS SUITABILITY FOR THEIR NEEDS.