

# 1155

## LIBERTY AVENUE CYPRESS HILLS, BROOKLYN

Between Sheridan & Grant Avenues

RETAIL FOR LEASE



PROPERTY INFORMATION

### APPROXIMATE SIZE

1,600 SF + Basement

### ASKING RENT

Upon Request

### POSSESSION

Immediate

### TERM

Negotiable

### FRONTAGE

18 FT

### COMMENTS

- Prime retail corridor with national co-tenancy
- High foot traffic
- Dense residential area

### NEIGHBORS

Foot Locker • T-Mobile • Fabco Shoes • S&D Kids • Checkers • C Town Market • Starry Nail Spa • Rio De Oro Jewelry • Grant Caffè

### TRANSPORTATION

A

JAMES FAMULARO  
President

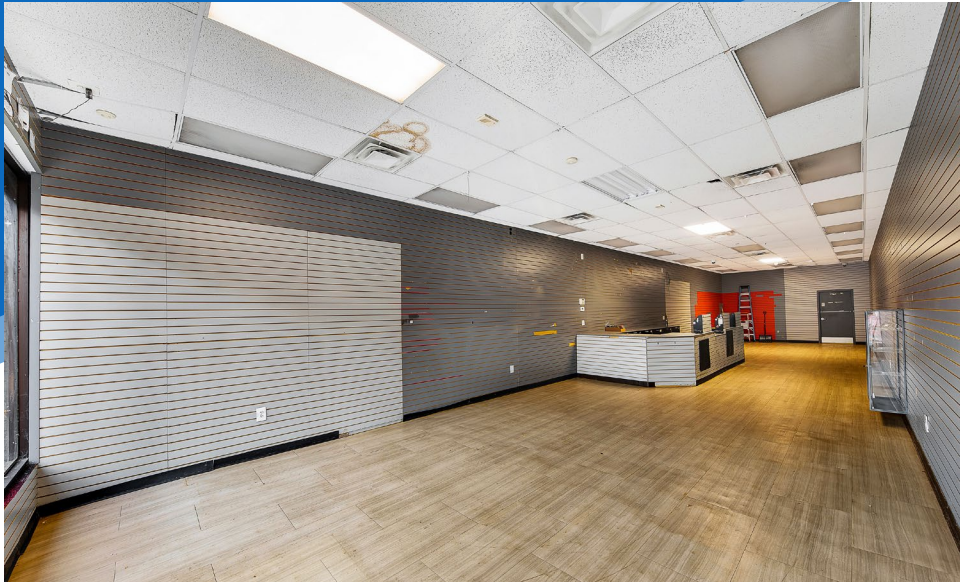
JOSEPH HARARY  
Associate  
212.468.5978  
jharary@meridiancapital.com



**MERIDIAN**  
RETAIL LEASING

All information supplied is from sources deemed reliable and is furnished subject to errors, omissions, modifications, removal of the listing from sale or lease, and to any listing conditions, including the rates and manner of payment of commissions for particular offerings imposed by Meridian Capital Group. This information may include estimates and projections prepared by Meridian Capital Group with respect to future events, and these future events may or may not actually occur. Such estimates and projections reflect various assumptions concerning anticipated results. While Meridian Capital Group believes these assumptions are reasonable, there can be no assurance that any of these estimates and projections will be correct. Therefore, actual results may vary materially from these estimates and projections. Any square footage dimensions set forth are approximate.





INTERIOR

JAMES FAMULARO  
President

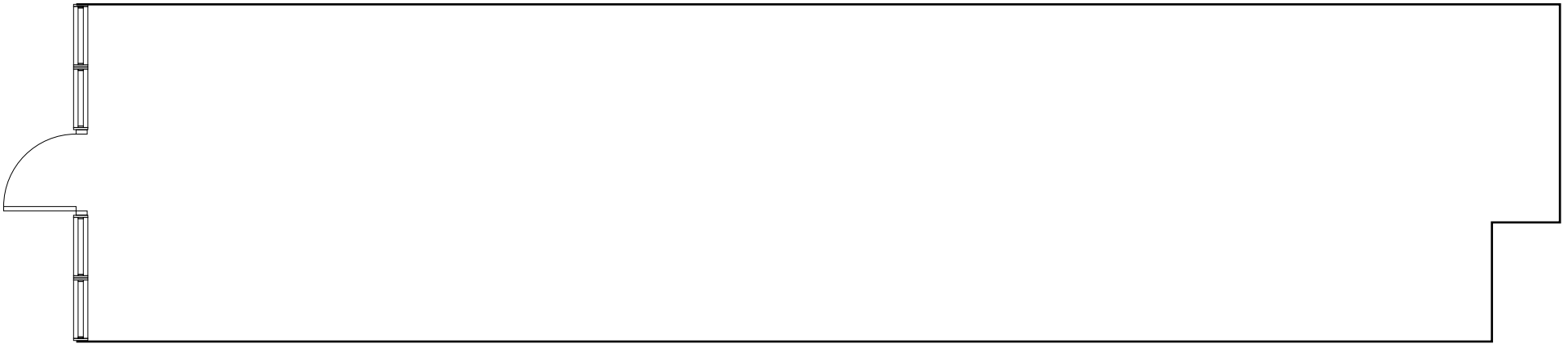
JOSEPH HARARY  
Associate  
212.468.5978  
jharary@meridiancapital.com



**MERIDIAN**  
RETAIL LEASING

1155 LIBERTY AVENUE  
CYPRESS HILLS, BROOKLYN | Between Sheridan and Grant Avenues

RETAIL FOR LEASE



FLOOR PLAN

JAMES FAMULARO  
President

JOSEPH HARARY  
Associate  
212.468.5978  
jharary@meridiancapital.com

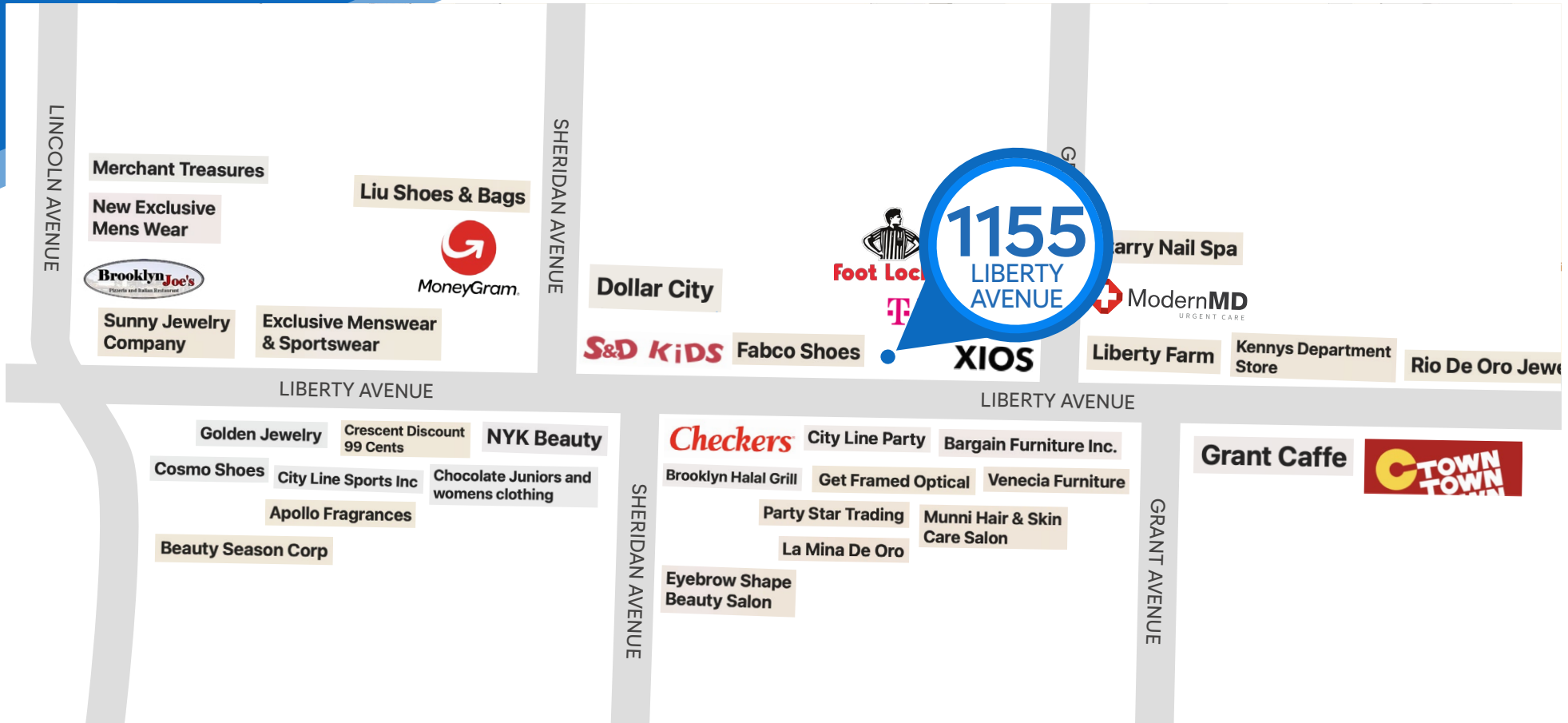


**MERIDIAN**  
RETAIL LEASING

All information supplied is from sources deemed reliable and is furnished subject to errors, omissions, modifications, removal of the listing from sale or lease, and to any listing conditions, including the rates and manner of payment of commissions for particular offerings imposed by Meridian Capital Group. This information may include estimates and projections prepared by Meridian Capital Group with respect to future events, and these future events may or may not actually occur. Such estimates and projections reflect various assumptions concerning anticipated results. While Meridian Capital Group believes these assumptions are reasonable, there can be no assurance that any of these estimates and projections will be correct. Therefore, actual results may vary materially from these estimates and projections. Any square footage dimensions set forth are approximate.



NEIGHBORS



JAMES FAMULARO  
 President

JOSEPH HARARY  
 Associate  
 212.468.5978  
 jharary@meridiancapital.com



**MERIDIAN**  
 RETAIL LEASING