

1801-1725 HOWARD STREET
DETROIT, MICHIGAN

INDUSTRIAL FOR LEASE
40,500 Square Feet Available

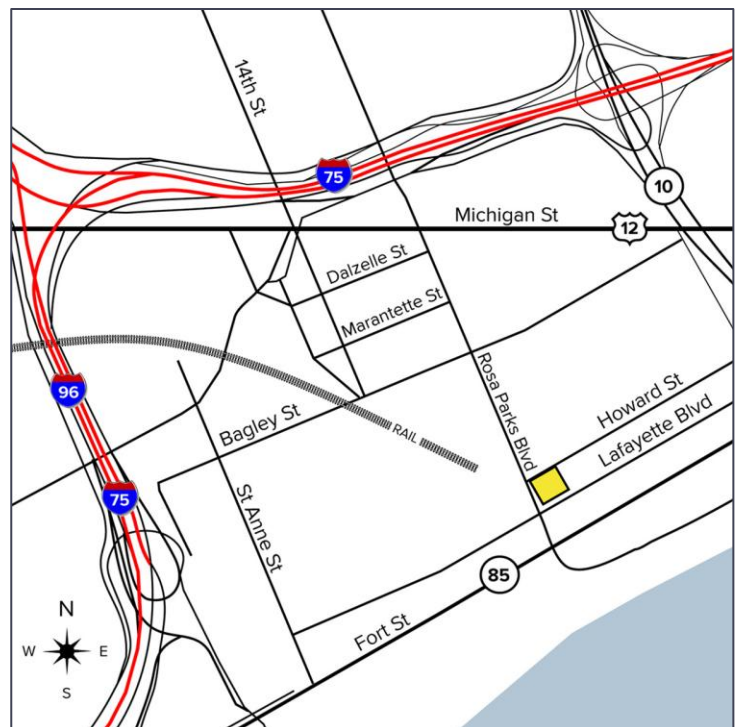


**SIGNATURE
ASSOCIATES**
KNOW SIGNATURE | KNOW RESULTS



PROPERTY FEATURES

- 40,500 square feet available
- 22' – 24' clear height
- (2) truckwells
- (2) 15-ton cranes
- 2000 amps, 220/480 volts, 3-phase – 125k stand-by generator
- Ample parking
- Available immediately
- Lease Rate: \$7.95/sq. ft. NNN



For more information, please contact:

CHRIS MONSOUR

(248) 948 0107

cmonsour@signatureassociates.com

PETER VANDERKAAY

(248) 359 3837

pvanderkaay@signatureassociates.com

SIGNATURE ASSOCIATES

One Towne Square, Suite 1200

Southfield, MI 48076

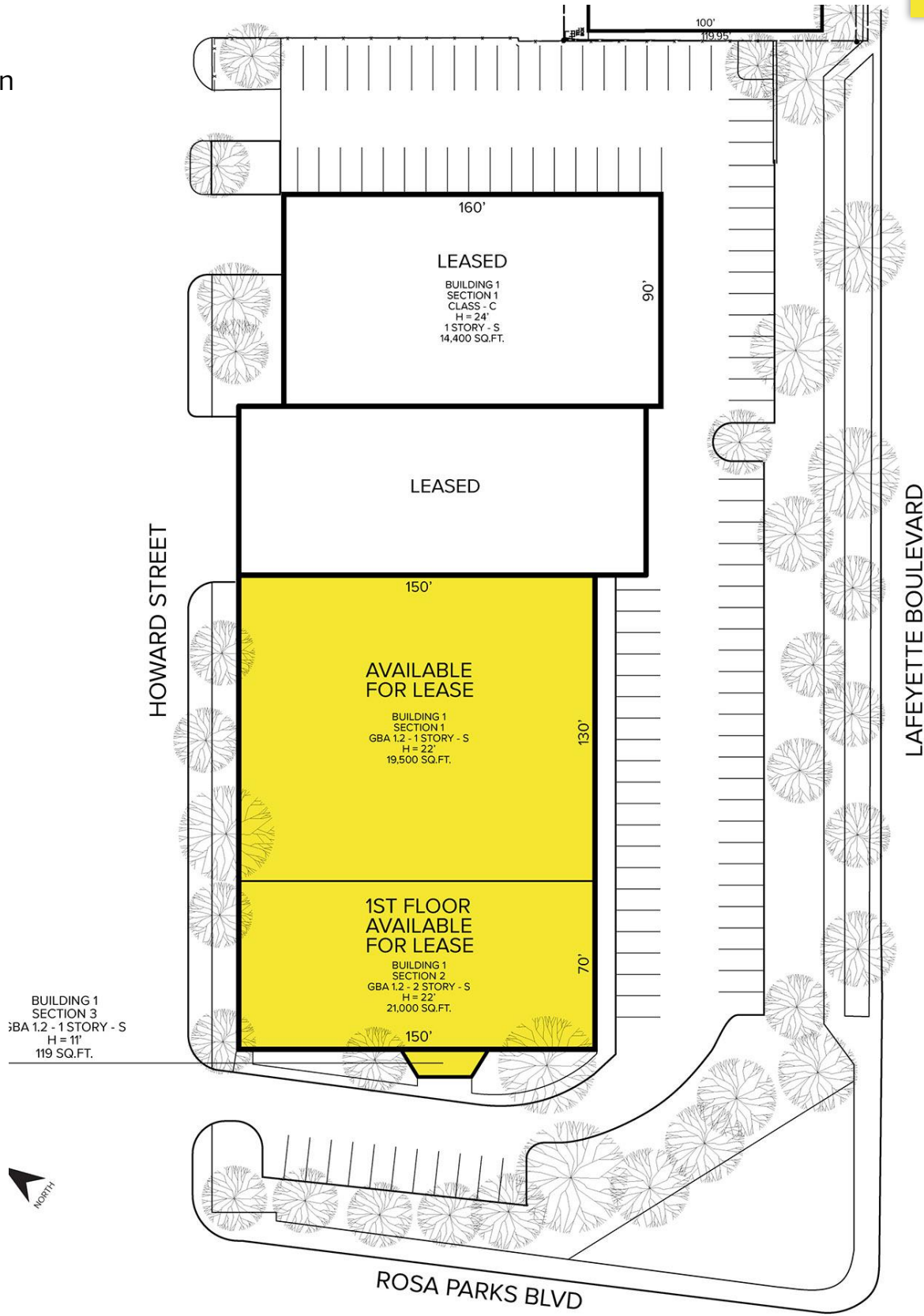
www.signatureassociates.com

1801-1725 Howard Street – Detroit, Michigan

Industrial For Lease

40,500
Square Feet
AVAILABLE

Site Plan



For more information, please contact:

CHRIS MONSOUR

(248) 948 0107

cmonsour@signatureassociates.com

PETER VANDERKAAY

(248) 359 3837

pvanderkaay@signatureassociates.com

SIGNATURE ASSOCIATES

One Towne Square, Suite 1200

Southfield, MI 48076

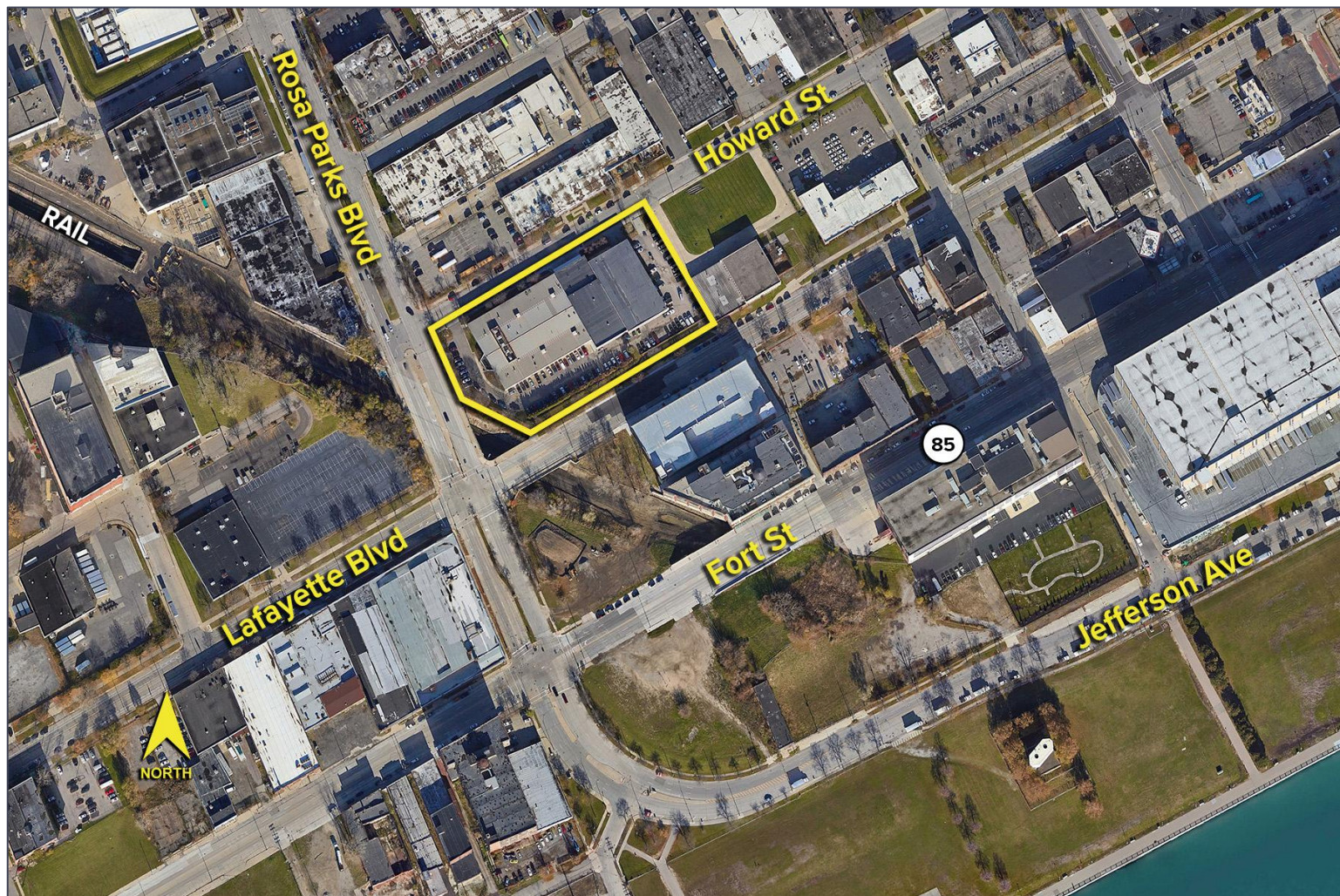
www.signatureassociates.com

1801-1725 Howard Street – Detroit, Michigan

Industrial For Lease

40,500
Square Feet
AVAILABLE

Aerial



For more information, please contact:

CHRIS MONSOUR

(248) 948 0107

cmonsour@signatureassociates.com

PETER VANDERKAAY

(248) 359 3837

pvanderkaay@signatureassociates.com

SIGNATURE ASSOCIATES

One Towne Square, Suite 1200

Southfield, MI 48076

www.signatureassociates.com

Information is subject to verification and no liability for errors or omissions is assumed. Price is subject to change and listing withdrawal.