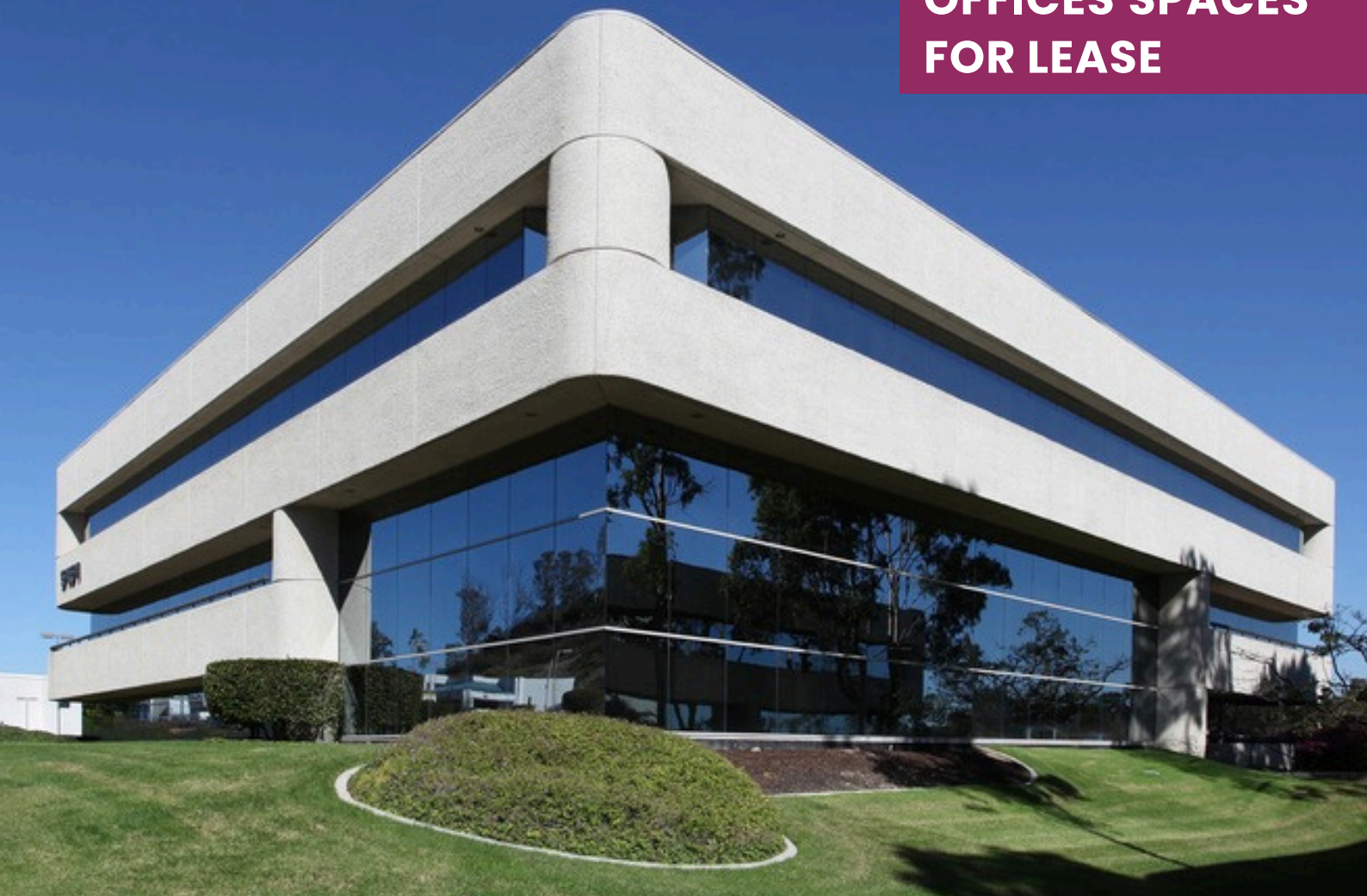


# FOR LEASE

5151 Murphy Canyon Road  
San Diego, CA 92123



**OFFICES SPACES  
FOR LEASE**

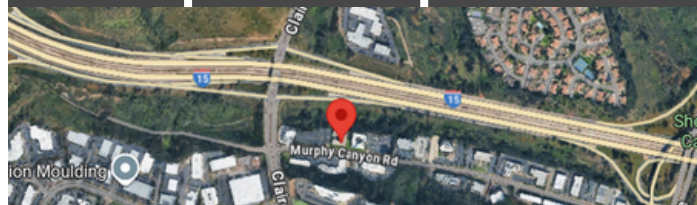


## PROPERTY HIGHLIGHTS

- Beautiful courtyard building with great views.
- Visible from Interstate 15 in eastern Kearny Mesa.
- Convenient freeway and nearby retail access.
- Peaceful water feature and lush landscaping.

## AVAILABLE SPACES

SUITE	SIZE	RATE (PSF)
210	1,978 SF	\$ 1.95 + ELETRIC.
310	2,293 SF	\$ 1.95 + ELETRIC.



[www.cgpincre.com](http://www.cgpincre.com)

# FOR LEASE

5151 Murphy Canyon Road  
San Diego, CA 92123

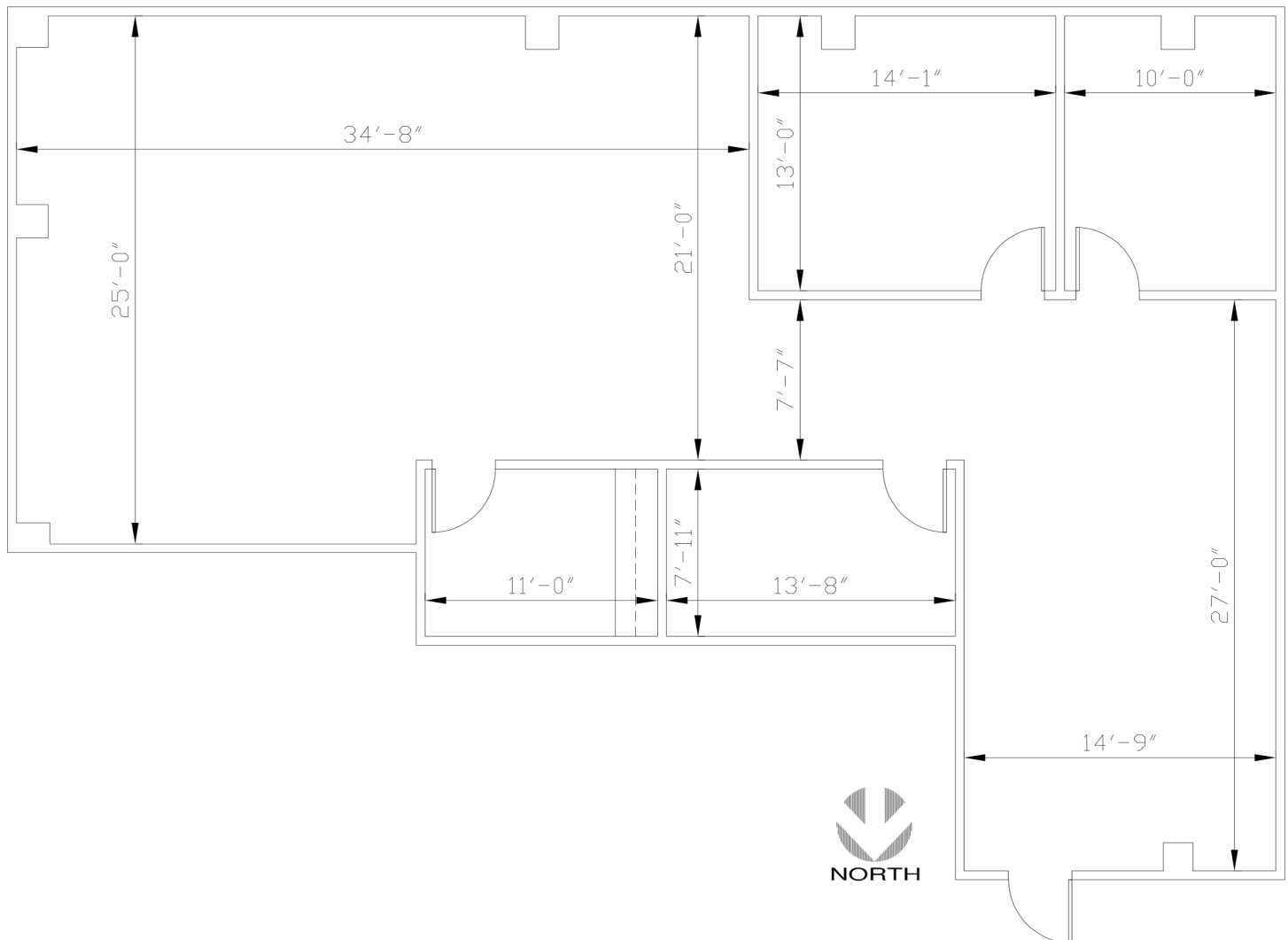


CAPITAL GROWTH  
PROPERTIES, INC.

## SUITE 210 FLOOR PLAN - 1,978 SF

Three private offices + large reception area + an open bullpen area + storage/copier room.

### SUITE 210



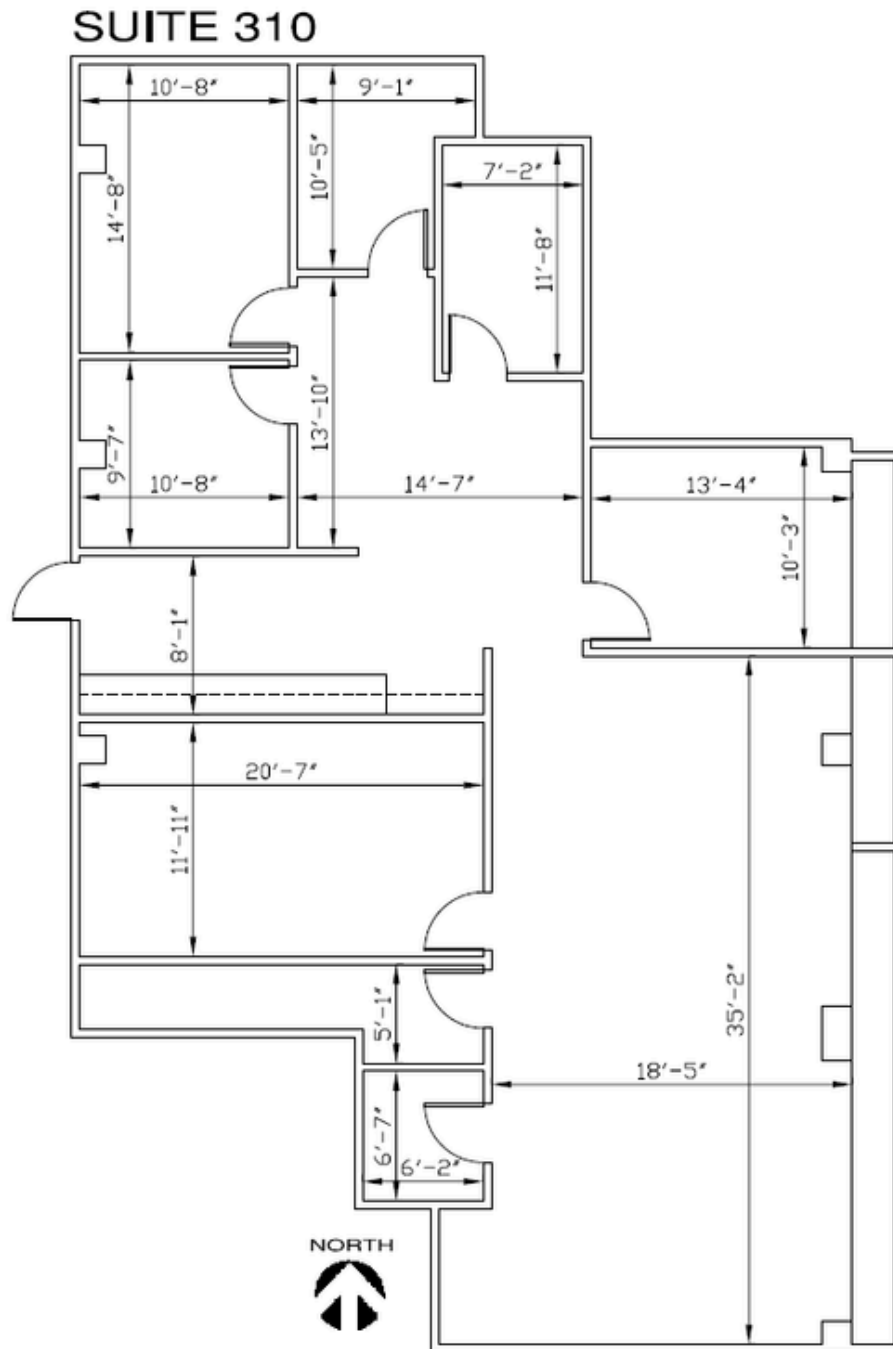
# FOR LEASE

5151 Murphy Canyon Road  
San Diego, CA 92123



## SUITE 310 FLOOR PLAN - 2,293 SF

Five private offices + Conference room + I.T. room + large bullpen area





# FOR LEASE

5151 Murphy Canyon Road  
San Diego, CA 92123



CAPITAL GROWTH  
PROPERTIES, INC.

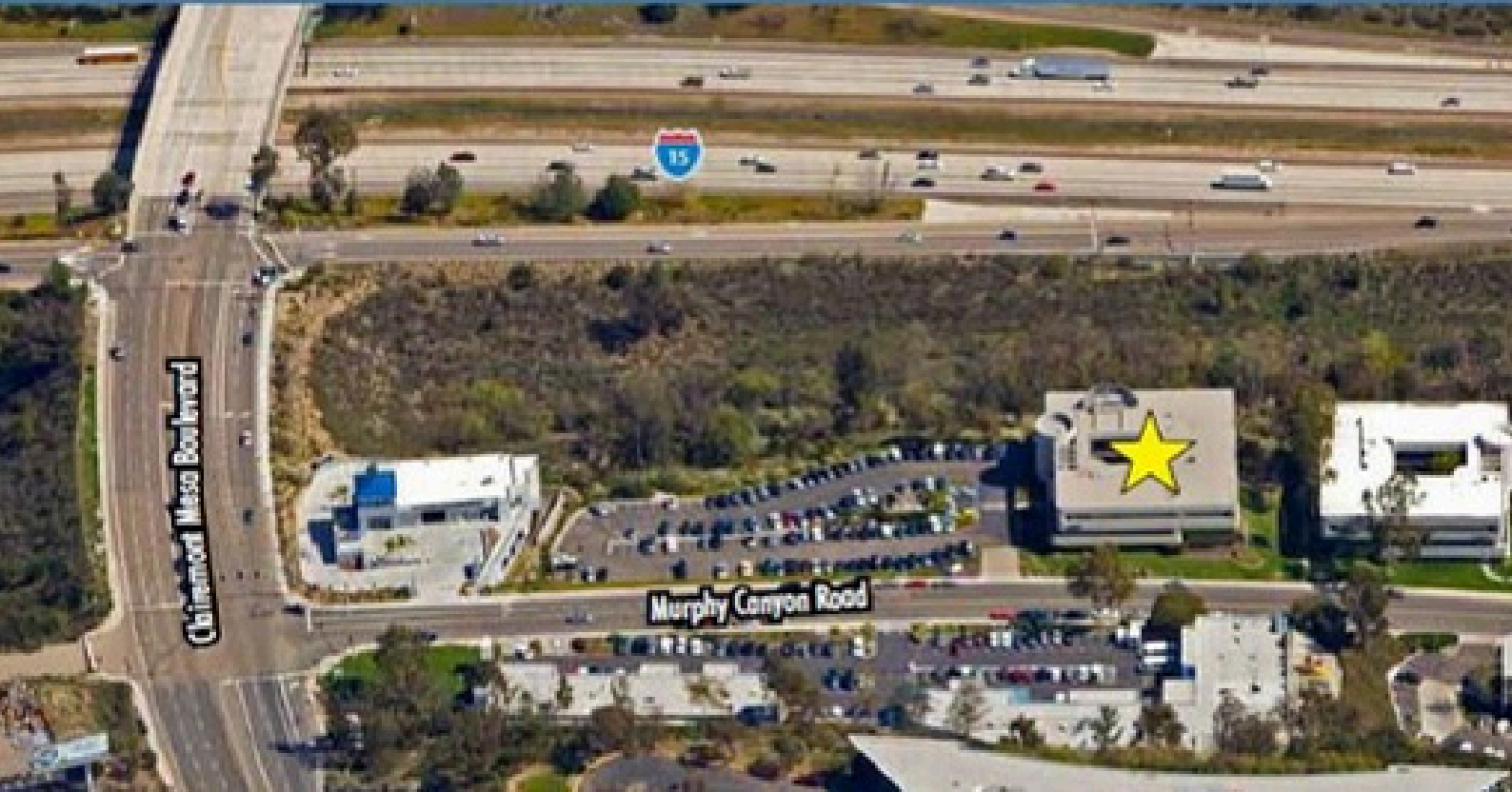


[www.cgpincre.com](http://www.cgpincre.com)



# FOR LEASE

5151 Murphy Canyon Road  
San Diego, CA 92123



For more information, please contact:



**Jill Morton**

Senior Vice President

[jmorton@cgpinc.com](mailto:jmorton@cgpinc.com)

(619) 955.2877

CA DRE Lic. 00868254



1120 Silverado Street, Suite 200

La Jolla, CA 92037



858.729.9300



[www.cgpinc.com](http://www.cgpinc.com)



@cgpinc

[www.cgpinc.com](http://www.cgpinc.com)