

For  
Lease

38,956 SF  
Industrial Unit  
Divisible to 19,478 SF

**1442-1456 Norwood Ave**  
ITASCA, ILLINOIS

OWNED & MANAGED BY

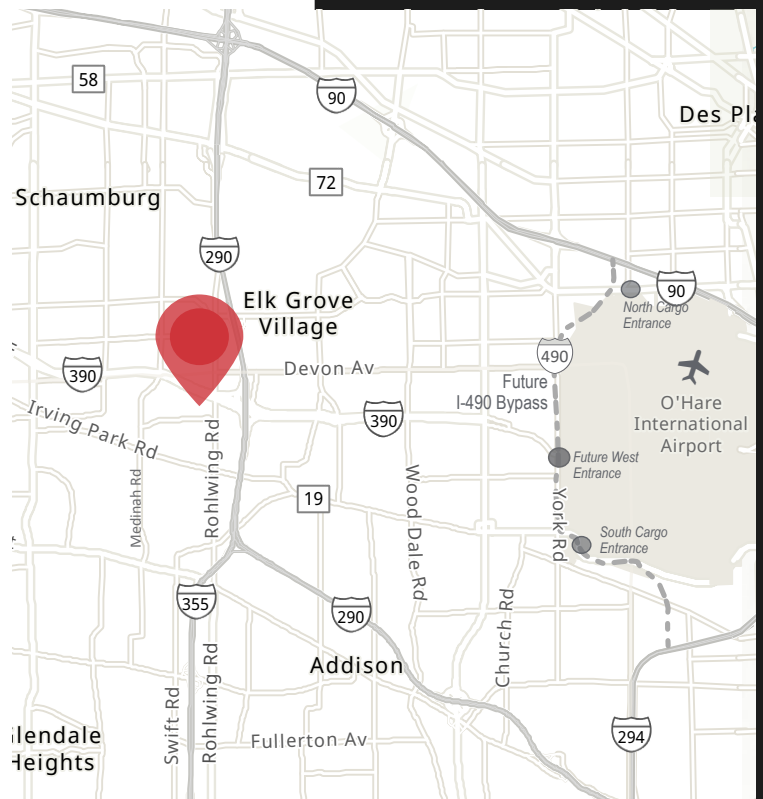


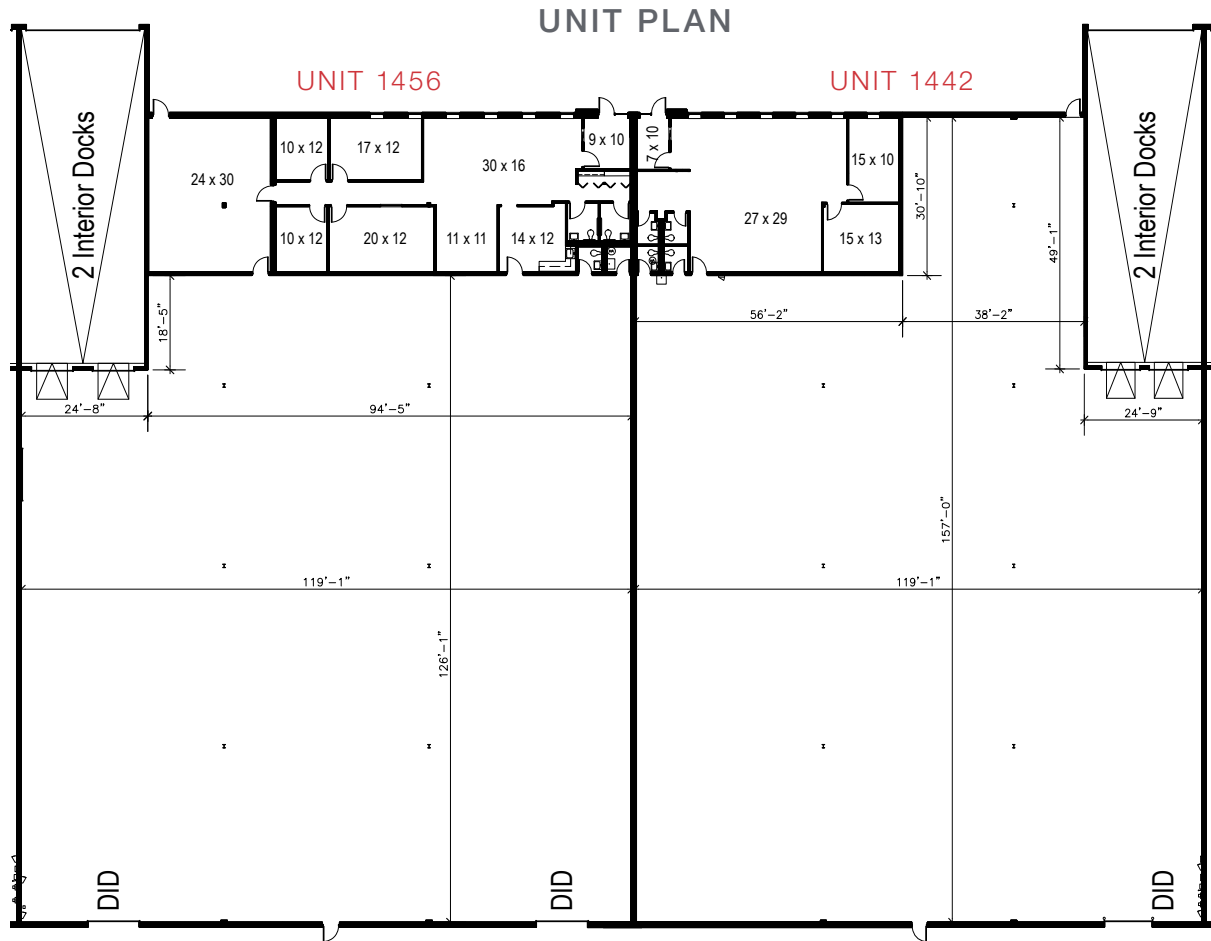
AVAILABLE	38,956 SF
DIVISIBLE	19,478 SF
BUILDING SIZE	102,617 SF
CLEAR HEIGHT	16'
OFFICE AREA	4,692 SF
DOCKS	4 INTERIOR DOCKS
DRIVE-IN DOORS	3
TAX, CAM, INS	\$2.21 PSF
LEASE RATE	SUBJECT TO OFFER
COMMENTS	<p>Located off full interchanges at I-290 and IL 390 (Elgin-O'Hare Expwy)</p> <p>Minutes from O'Hare Airport</p>

**Contact**

Terry Herlihy  
+1 630 693 0664  
therlihy@hiffman.com

Mark Baumhart, CCIM  
+1 630 691 0550  
mbaumhart@hiffman.com



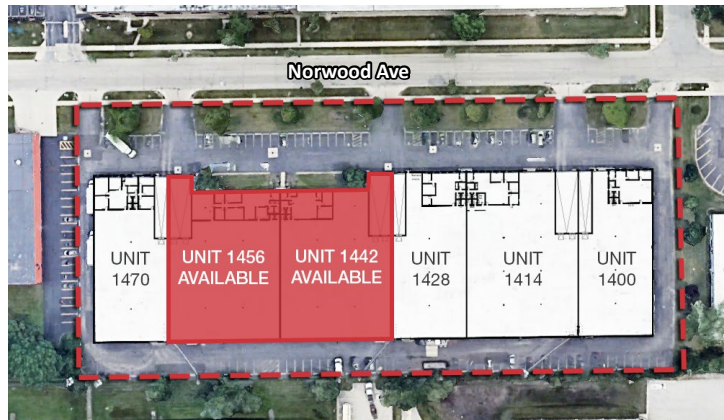


**UNIT 1456**

19,478 SF  
 2,949 SF Office  
 2 Interior Docks  
 2 Drive-In Doors

Power

150A, 3-phase,  
 4-wire, 120/240V  
  
 200A, 3-phase,  
 4-wire, 120/240V



**UNIT 1442**

19,478 SF  
 1,743 SF Office  
 2 Interior Docks  
 1 Drive-In Door

Power

400A, 3-phase,  
 4-wire, 120/240V,  
 high leg B phase  
  
 200A, 3-phase,  
 4-wire, 120/240V  
  
 150A, 3-phase,  
 4-wire, 120/240V

OWNED & MANAGED BY



One Oakbrook Terrace  
 Suite 400  
 Oakbrook Terrace, Illinois 60181  
 +1 630 932 1234

[hiffman.com](http://hiffman.com)