



**3780 South West Temple, Salt Lake City, Utah 84115**



### Property Information

- Recently Remodeled Office Available
- Suite 201: 2,700 RSF
- Private Restroom
- ADA Accessible
- Ample Parking
- Tenant Improvements Negotiable
- Beautiful Park Views
- Immediate Trax Station Access
- Minutes to I-15 Access

### Demographics

	1 Mile	3 Mile	5 Mile
Population	14,572	134,978	384,228
Households	5,538	53,646	143,371
Avg. Household Income	\$38,527	\$46,823	\$55,780

### Traffic Counts

West Temple: 28,868 Annual Average Daily Traffic  
 3900 South: 21,045 Annual Average Daily Traffic

**LEASE RATE: \$12.00/SF YEAR NNN - FULL SERVICE RATE AVAILABLE**

**KELLEN KONCAR**

**801.617.1700**

**DANEILE SNELLING**

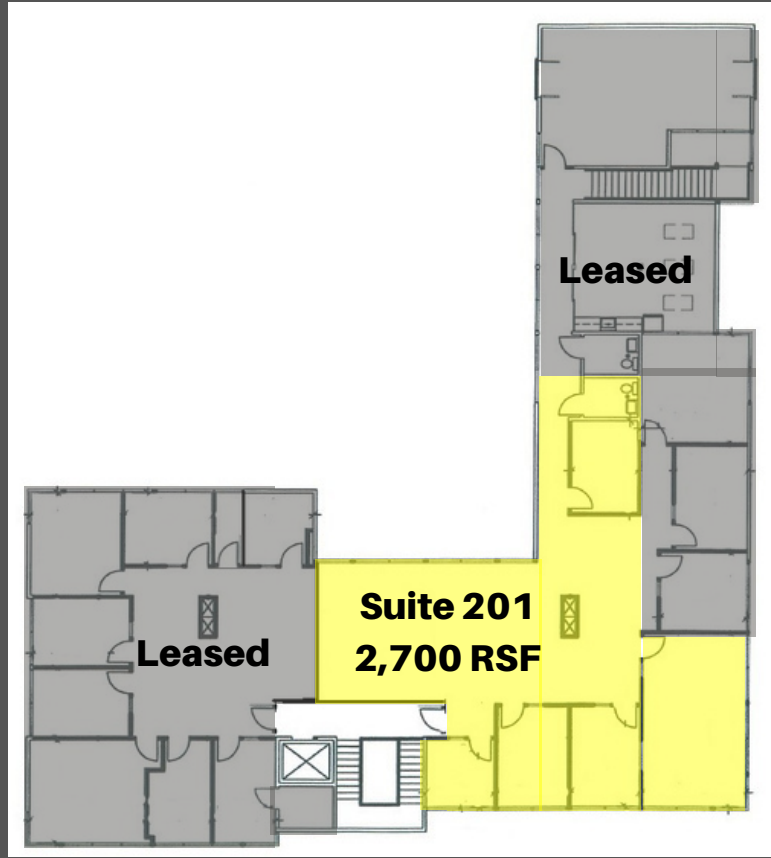
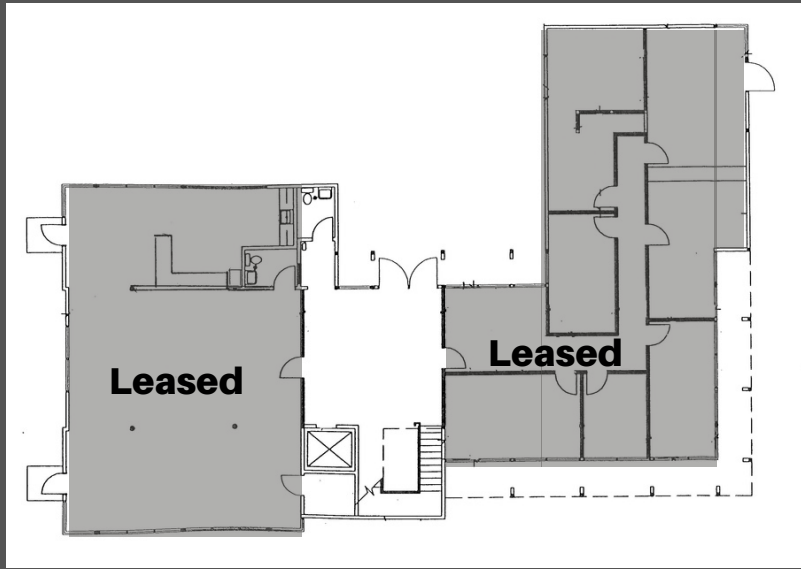
**KELLEN.KONCAR@CRCNATIONWIDE.COM**

**DANEILE.SNELLING@CRCNATIONWIDE.COM**



# COMMERCIAL REAL ESTATE CONSULTANTS

3780 South West Temple, Salt Lake City, Utah 84115



This information is given with the understanding that all negotiations and/or real estate activity related to the property described above shall be conducted through this cRc Nationwide office. The above information while not guaranteed, was obtained from sources we believe to be reliable.

**KELLEN KONCAR**  
KELLEN.KONCAR@CRCNATIONWIDE.COM

**801.617.1700**

**DANEILE SNELLING**  
DANEILE.SNELLING@CRCNATIONWIDE.COM