

12,063 SF SUBLEASE AVAILABLE

180 CUMBERLAND PARK DR

ST AUGUSTINE, FL 32095



Sublease Through April 30, 2027



PROPERTY HIGHLIGHTS

TOTAL SPACE AVAILABLE:	12,063 SF
OFFICE AREA:	2,976 SF
LAND AREA:	2.17 Acres
CLEAR HEIGHT:	18' - 25'
CONSTRUCTION:	Metal
PARKING:	12 Auto
YEAR BUILT:	2001
ZONING:	Light Commercial



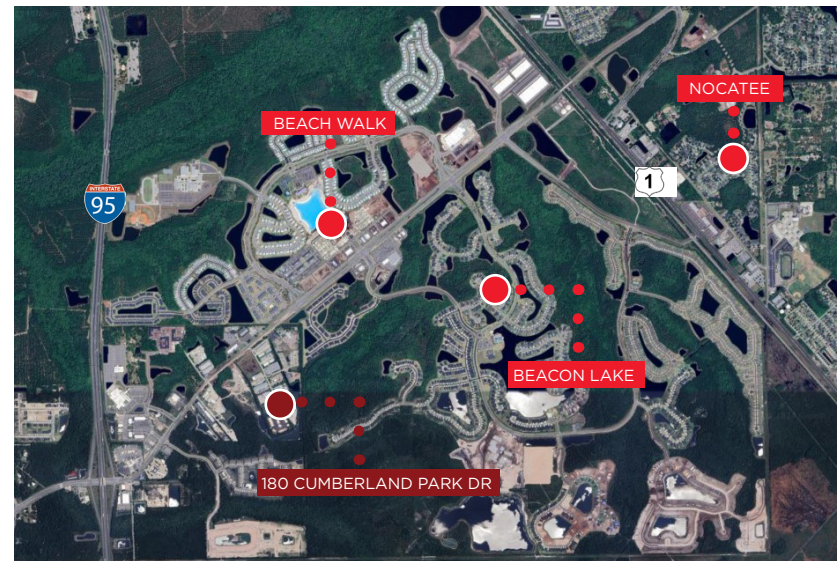
1-TON CRANE &
2-TON CRANE



1200 AMPS,
3 PHASE



4 GRADE LEVEL
1 DOCK PLATFORM WITH RAMP



FOR MORE INFORMATION, PLEASE CONTACT:

Drake Chamberlin

+1 772 285 3429

drake.chamberlin@cushwake.com

Jacob Horsley

+1 904 380 8336

jacob.horsley@cushwake.com



©2023 Cushman & Wakefield. All rights reserved. The information contained in this communication is strictly confidential. This information has been obtained from sources believed to be reliable but has not been verified. NO WARRANTY OR REPRESENTATION, EXPRESS OR IMPLIED, IS MADE AS TO THE CONDITION OF THE PROPERTY (OR PROPERTIES) REFERENCED HEREIN OR AS TO THE ACCURACY OR COMPLETENESS OF THE INFORMATION CONTAINED HEREIN, AND SAME IS SUBMITTED SUBJECT TO ERRORS, OMISSIONS, CHANGE OF PRICE, RENTAL OR OTHER CONDITIONS, WITHDRAWAL WITHOUT NOTICE, AND TO ANY SPECIAL LISTING CONDITIONS IMPOSED BY THE PROPERTY OWNER(S). ANY PROJECTIONS, OPINIONS OR ESTIMATES ARE SUBJECT TO UNCERTAINTY AND DO NOT SIGNIFY CURRENT OR FUTURE PROPERTY PERFORMANCE.

