

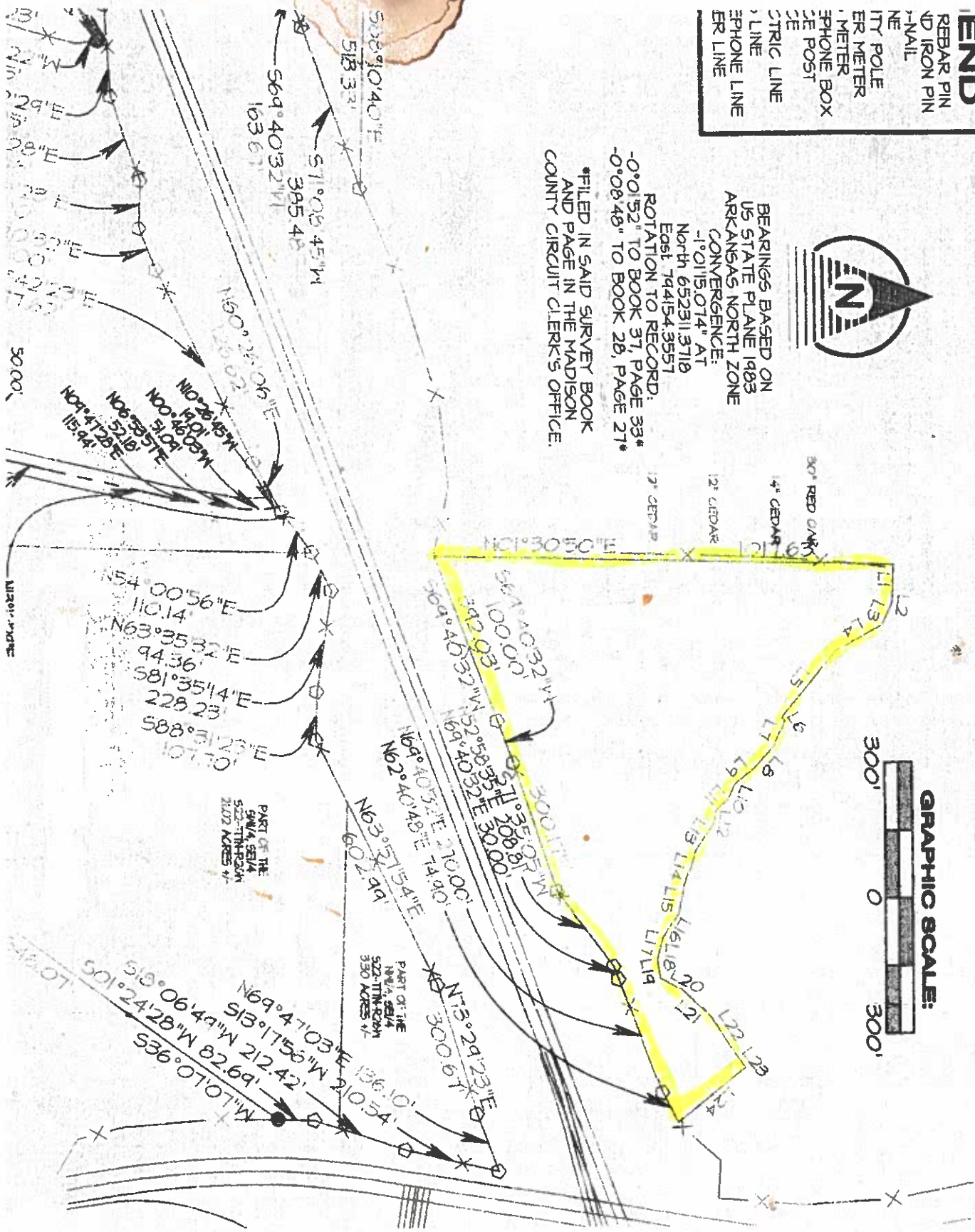
END
 REBAR PIN
 IRON PIN
 NAIL
 UTILITY POLE
 METER
 METER
 PHONE BOX
 POST
 TRIC LINE
 LINE
 PHONE LINE
 ER LINE



BEARINGS BASED ON
 US STATE PLANE 1983
 ARKANSAS NORTH ZONE
 CONVERGENCE:
 -1°01'15.074" AT
 North 652311.3718
 East 794154.3557

ROTATION TO RECORD:
 -0°01'52" TO BOOK 37, PAGE 33*
 -0°08'48" TO BOOK 28, PAGE 27*

*FILED IN SAID SURVEY BOOK
 AND PAGE IN THE MADISON
 COUNTY CIRCUIT CLERK'S OFFICE.



LINE
L1
L2
L3
L4
L5
L6
L7
L8
L9
L10
L11
L12

EASEMENT DESCRIPTION

Commencing at a corner between S North 01°31'15" East, a distance of survey filed in Survey Clerk's Office for property line the 1) South 83°18'22 pin with cap 2) South 37°13'16 pin with cap Southwest of 3) North 88°09'3 centerline of an said centerline th 1) North 38°00'0 North 28°02'2 North 14°23'0 North 08°13'0 North 12°20'0 North 13°12'2 North 09°47'2 North 06°53'5 North 00°46' North 10°26' of-way of U.S. Hig the said South Rir

EASEMENT DESCR A 50 foot wide easement on a part of the South Township 17 North, Madison County, Arkansas, 4 feet both sides of