

Office Suite • 1,091 SF AVAILABLE • \$19/SF MG

FOR LEASE

Carefree Office Center

Carefree Arizona
Class "A"
Garden Style Office
Building



LOCATED AT THE SWC OF EAST CAVE CREEK & ELBOW BEND ROADS ...
15,734 SF Class A Garden-Style Office Building with a 4 to 1 parking ratio and excellent local amenities that include retail and restaurants in the Center of Town. Recently Renovated and Value Priced at \$19/SF FS Net Elect & Janitorial.



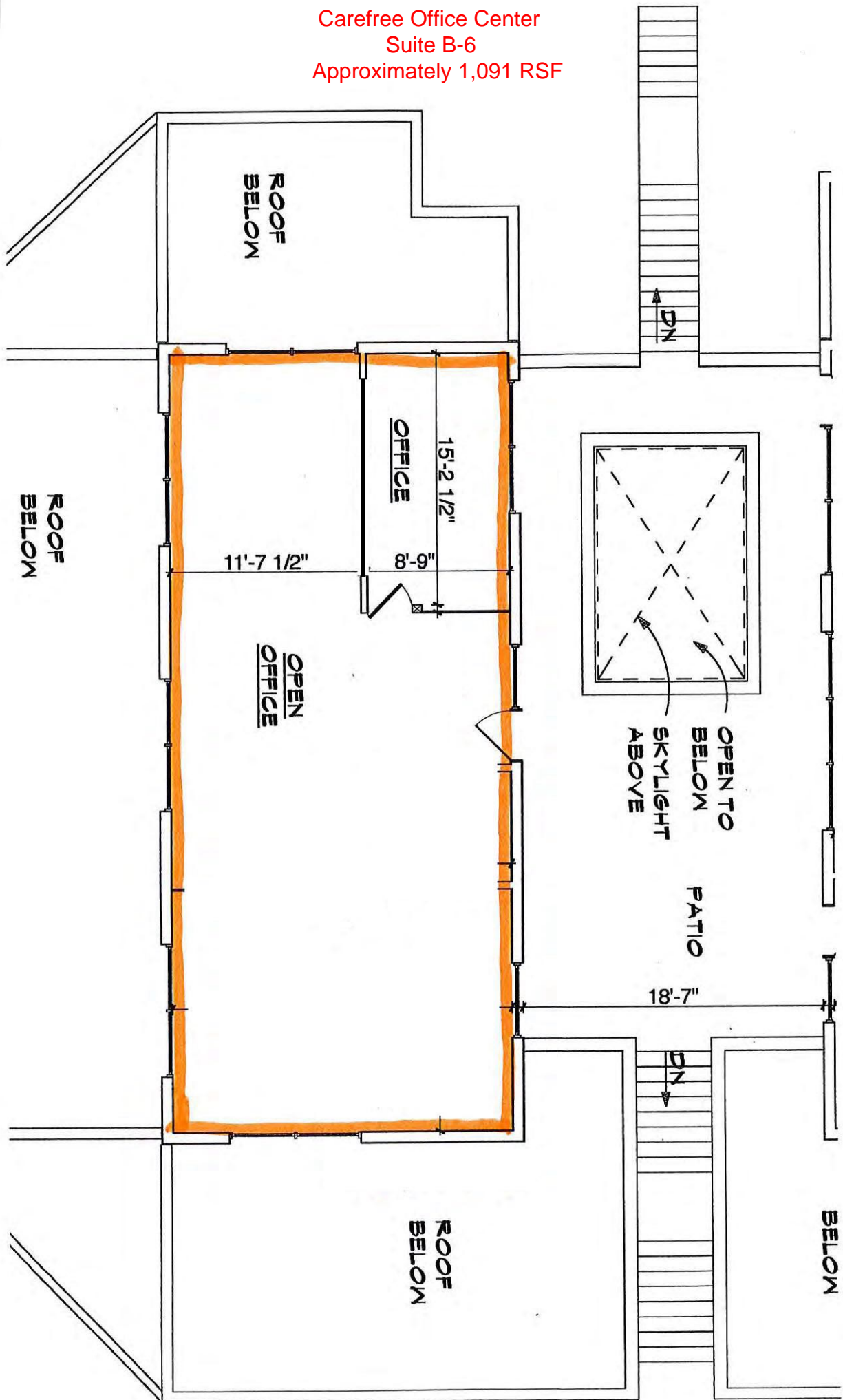
7518 E. Elbow
Bend Rd., Carefree, AZ
85377



Contact: Rick Mineweaser
DIAMOND PACIFIC INVESTMENTS, INC.
O: 480-951-4118 / M: 602-703-4118
rick@diamond-pacific.com

[Drone Flight of the Immediate Area that You Control • Click Here](#)

Carefree Office Center
Suite B-6
Approximately 1,091 RSF



New Spec Build-Out
Suite B-6 at Carefree Office Center



Carefree Office Center



Carefree Office Center

