

Palmetto Lakes Distribution Center

16005 NW 52nd Avenue
Hialeah, FL 33014

±75,824 SF Available



16005 NW 52nd Avenue | Hialeah, FL 33014

Architectural floor plan of the first floor of a building. The plan shows a large rectangular layout with a grid system labeled A through F horizontally and 1 through 9 vertically. Key features include a central corridor, several rooms, and a large open area. Dimensions are provided for various sections and overall totals. Labels include 'ELECT. ROOM', 'RAUP', '12'6" x 14'6" C.H.D. @ DOCK HOIST', and '10'6" x 10'6" C.H.D. @ DOCK HOIST'. The plan also shows a staircase and various door openings.

76K

Total SF

22'

Clear Height

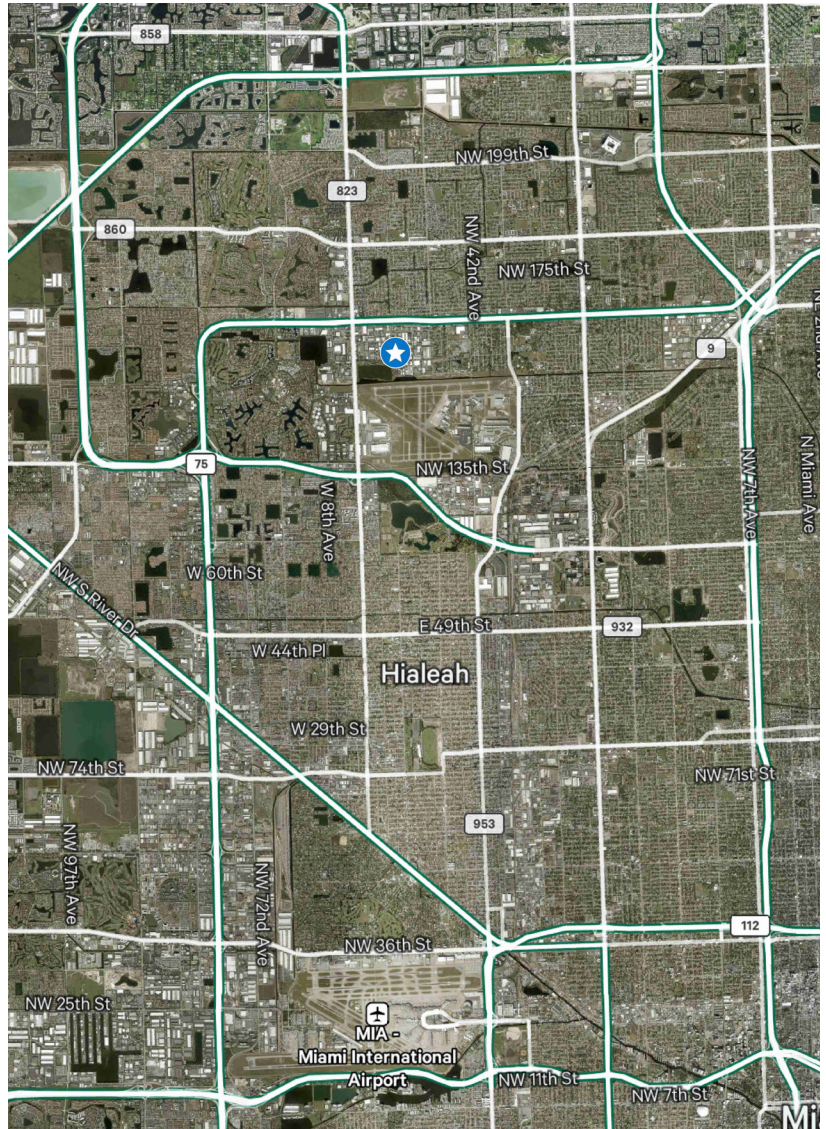
1981

Year Built

Property Features	
Available SF	75,824 SF
Warehouse SF	55,844 SF
Office SF	19,980 SF
Clear Height	22'
Loading	6 docks, 1 ramp
Power	1800 AMPS
Parking	80-100 spaces
Lease Rate	\$12.95 NNN + \$4.60 OpEx
Available	Available January 1, 2026 / Master lease expires August 31, 2027

Location Highlights

- + Located near downtown Miami Lakes
- + Located in close proximity to major South Florida thoroughfares including the Palmetto Expressway, I-95 and the Florida Turnpike



Contact Us

David Albert

Executive Vice President
+1 305 381 6474
david.albert@cbre.com

Isabel Nakash

Associate
+1 347 860 1757
isabel.nakash@cbre.com

© 2025 CBRE, Inc. All rights reserved. This information has been obtained from sources believed reliable, but has not been verified for accuracy or completeness. You should conduct a careful, independent investigation of the property and verify all information. Any reliance on this information is solely at your own risk. CBRE and the CBRE logo are service marks of CBRE, Inc. All other marks displayed on this document are the property of their respective owners, and the use of such logos does not imply any affiliation with or endorsement of CBRE. Photos herein are the property of their respective owners. Use of these images without the express written consent of the owner is prohibited.