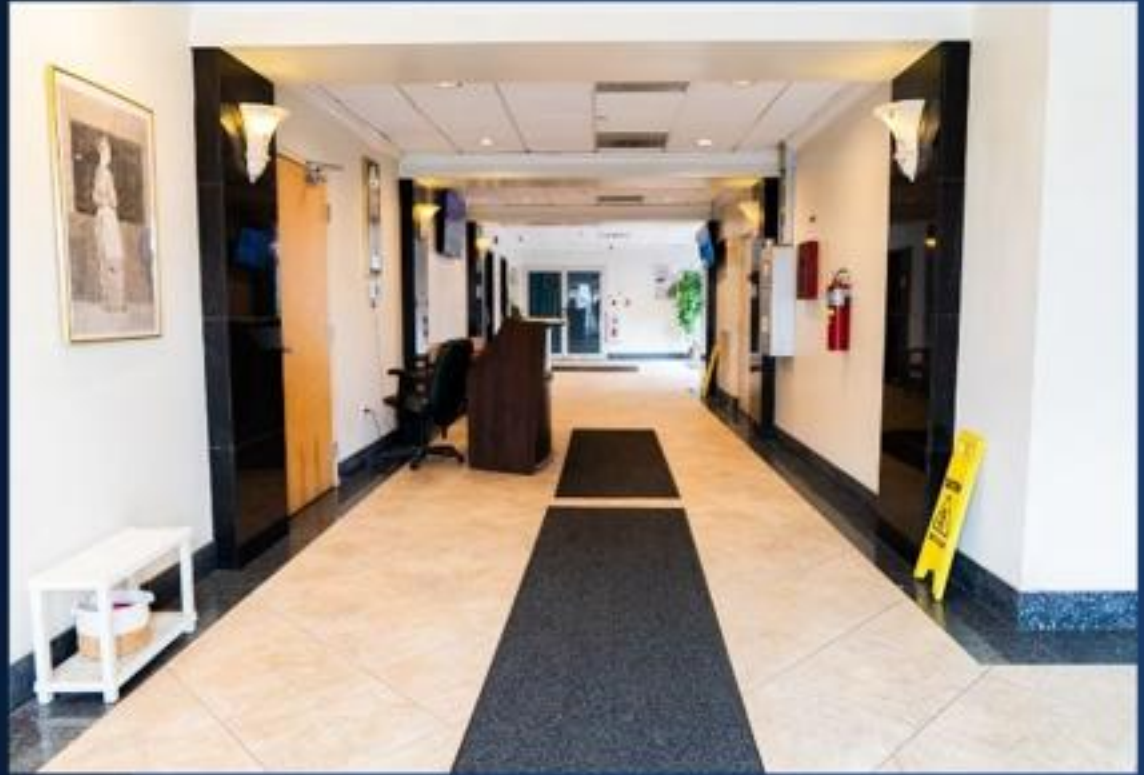




PRIME OFFICE SPACES AVAILABLE

731 JAMES ST, SYRACUSE, NY

TruCare Connections recently acquired our office building at 731 James Street and is excited to offer prime office spaces for lease. Situated in the heart of Syracuse on the James Street Corridor, this location boasts exceptional access to I-81 and I-690, placing your business in a strategic position for growth and visibility.



UNITS AVAILABLE

- Unit B3 - 976 Sqft
- Unit B4 - 2,016 Sqft
- Unit B5 - 2,076 Sqft
- Unit B9 - 150 Sqft
- Unit 100C - 5,077 Sqft
- Unit 201 - 1,650 Sqft
- Unit 205 - 1,000 Sqft
- Unit 223 - 1,300 Sqft
- Unit 225 - 900 Sqft
- Unit 240 - 582 Sqft
- Unit 408 - 722 Sqft
- Unit 430 - 1,230 Sqft

FOR AVAILABILITY &
SHOWINGS, CONTACT:



JAY SUBEDI

jsubedi@trucareny.com
315-930-4229

140 METRO LLC

731 James St, Suite 300
Syracuse, NY 13203