

Carolina Interventional Pain Institute

2611 Forest Drive, Columbia, SC 29204



AVAILABLE SPACE
2,174 – 5,004 RSF

 **VIEW SUITES**

- Class A, two-story medical office building recently renovated in 2018
- Diverse tenant mix with robust referral base
- Adjacent to MUSC Health Columbia Medical Center Downtown Hospital
- Common indoor courtyard and covered patient drop-off
- Monument and building signage opportunities
- Generous Tenant Improvement Allowance with flexible terms

Class A, two-story medical office building recently renovated in 2018.

POPULATION (5-MILE RADIUS)

175,031

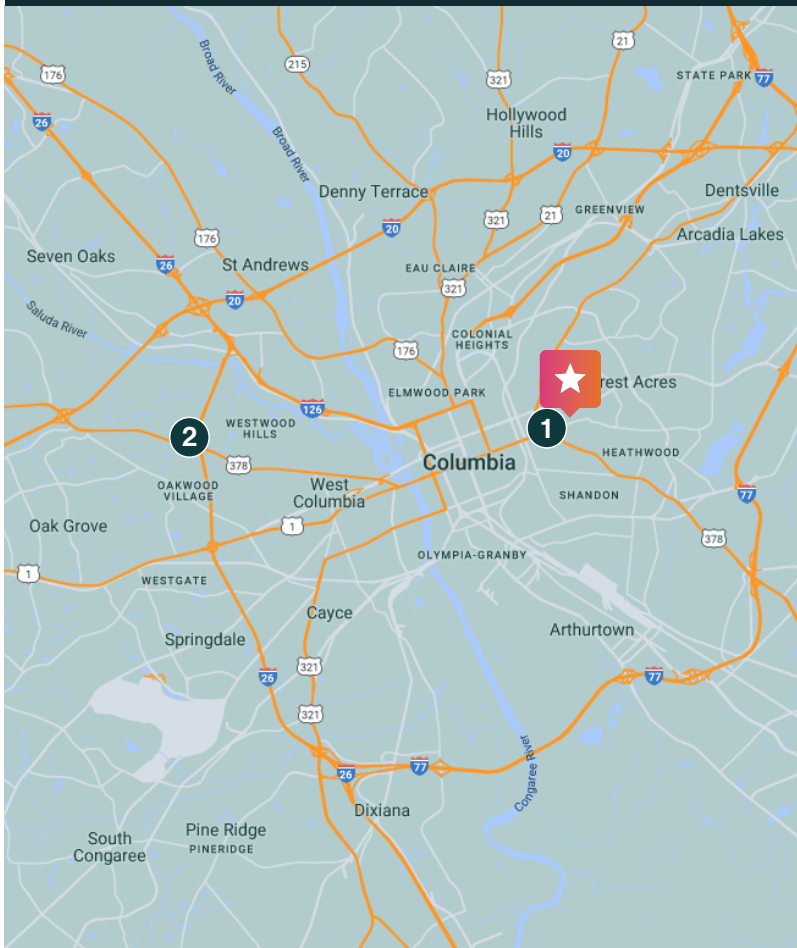
AVERAGE HOUSEHOLD INCOME (5-MILE RADIUS)

\$90,060

PERCENT OF POPULATION INSURED (5-MILE RADIUS)

97.0%

2611 FOREST DRIVE, COLUMBIA, SC 29204



NEARBY HOSPITALS

	DISTANCE	DRIVE TIME
1. MUSC Health Columbia Medical Center	0.7 mi	2 min
2. Lexington Medical Center	8.5 mi	18 min

SURROUNDING POINTS OF INTEREST

- Hawthorne Laurel Pharmacy
- Food Lion
- Kroger
- Richland Mall
- Hilton Garden Inn Columbia Downtown
- Forest Lake Club
- Anytime Fitness
- Starbucks
- Azalea Coffee Bar
- Chick-fil-Ia
- Pitas
- Moe's Southwest Grill

SUZANNA NICHOLS, VP | LEASING

919.306.2275 cell
snichols@remedymed.com

MIMI POTRATZ, ASSOCIATE | LEASING

910.262.6822 cell
mpotratz@remedymed.com