



Land For Lease

1159 North 1200 West Orem, Utah

Property Information

- Property backs I-15 for great visibility and signage
- Will consider both short term and long term leases
- ADT: I-15 near 800 North - 211,000 ADT;
1200 West - 9,300 ADT
- High traffic location with good signage
- Parcels #17.032.0105 & #17.032.0023

Lease Rate: \$13,000 per month | NNN

Available: 2.25 Acres

Contact:

Brandon Huntsman

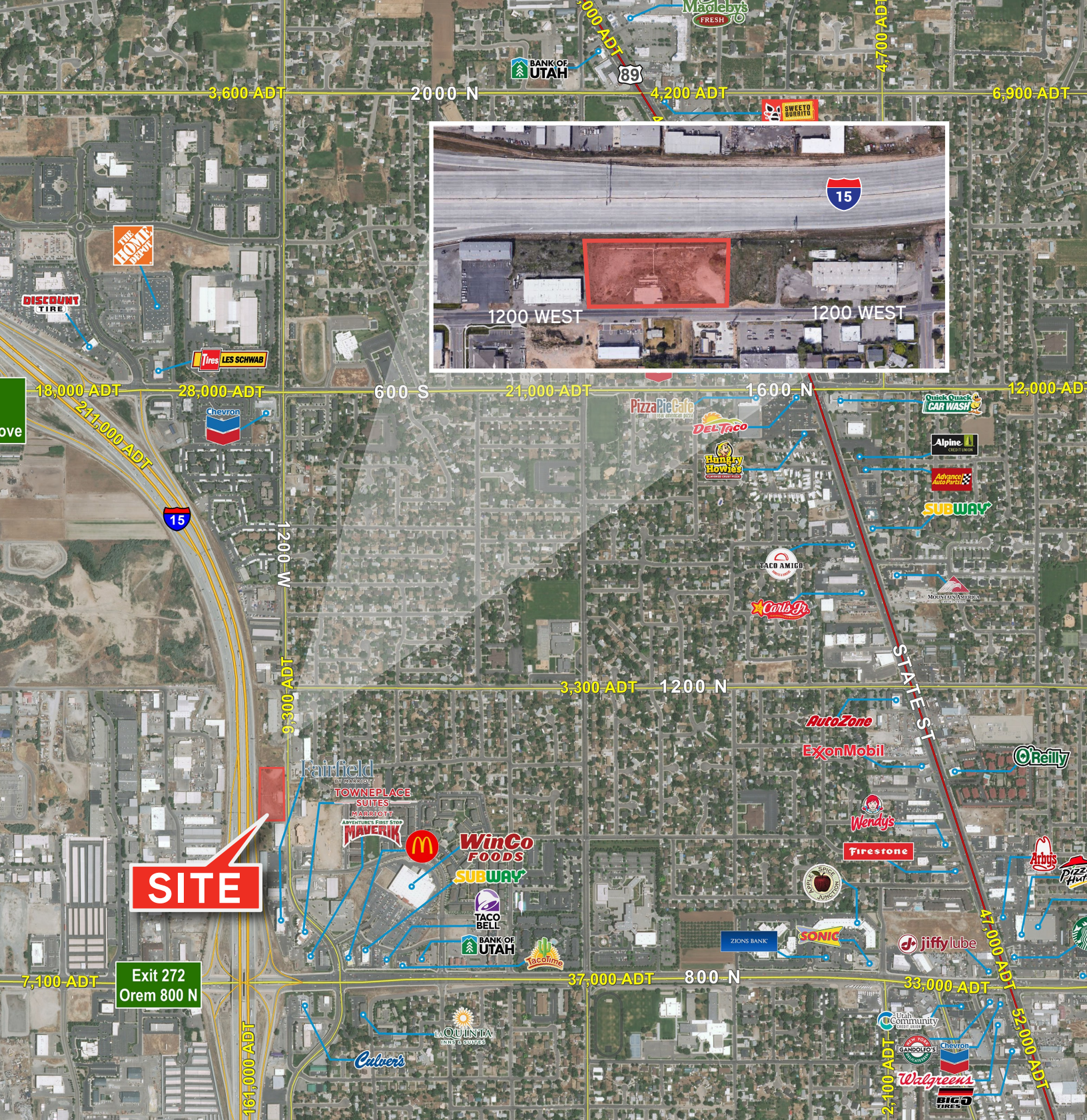
Executive Vice President
+1 801 830 9232
brandon.huntsman@colliers.com

Josh Martin

Executive Vice President
+1 801 830 2004
iosh.martin@colliers.com

Colliers

2100 Pleasant Grove Blvd. | Suite 200
Pleasant Grove, UT 84062
Main: +1 801 610 1300
colliers.com



Colliers
 2100 Pleasant Grove Blvd., Suite 200
 Pleasant Grove, UT 84062
 Main: +1 801 947 8300
 colliers.com

Brandon Huntsman
 Executive Vice President
 +1 801 830 9232
 brandon.huntsman@colliers.com

Josh Martin
 Executive Vice President
 +1 801 830 2004
 josh.martin@colliers.com

This document has been prepared by Colliers International for advertising and general information only. Colliers International makes no guarantees, representations or warranties of any kind, expressed or implied, regarding the information including, but not limited to, warranties of content, accuracy and reliability. Any interested party should undertake their own inquiries as to the accuracy of the information. Colliers International excludes unequivocally all inferred or implied terms, conditions and warranties arising out of this document and excludes all liability for loss and damages arising there from. This publication is the copyrighted property of Colliers International and/or its licensor(s). ©2024. All rights reserved.