

PRICE

\$245,000

SIZE

1,800 SF, on two levels

ZONING

Freestanding Commercial



IDEAL USE

Great opportunity to own your Doylestown office space, right in the Borough! This space is well-suited for a small business or professional office, including boutique professional services or a small medical or wellness practice seeking a central, walkable location with strong visibility and accessibility.

PROPERTY HIGHLIGHTS

Located just steps from the heart of downtown Doylestown, this office benefits from immediate access to a vibrant mix of retail, dining, and everyday amenities. The condo ownership structure offers a low-maintenance option for owner-occupants, minimizing exterior and common area responsibilities. Convenient access to Route 611 and the Route 202 Bypass provides excellent connectivity throughout Bucks and Montgomery Counties, making this an ideal location for both clients and employees.

PRESENTED BY

Keith T. Metzger
267-218-4819 (m) | 215-855-5100 ext 118 (o)
keithm@kpgcm.com

OFFICE SPACE FOR SALE

301 S Main Street, Unit 3W, Doylestown, PA 18907



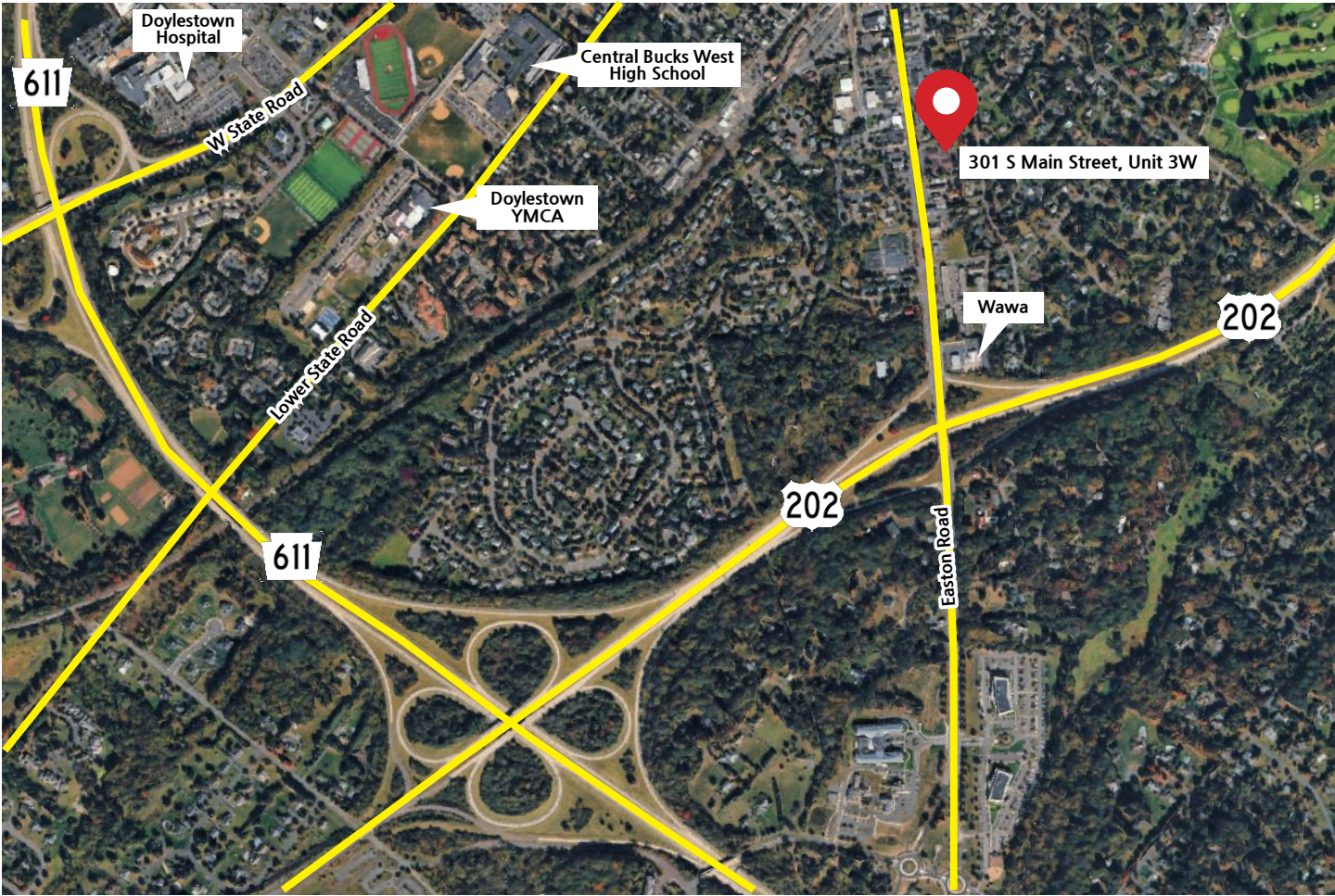
PRESENTED BY

Keith T. Metzger
267-218-4819 (m)
215-855-5100 ext 118 (o)
keithm@kpgcm.com



OFFICE SPACE FOR SALE

301 S Main Street, Unit 3W, Doylestown, PA 18907



PRESENTED BY

Keith T. Metzger
267-218-4819 (m)
215-855-5100 ext 118 (o)
keithm@kpgcm.com

