



# MEDICAL OFFICE

SPACE AVAILABLE  
2,229 - 3,104 RSF

## MEDICAL ARTS II CENTER

2191 9th Avenue N // St. Petersburg, FL 33713



404.252.1200 // [www.skcr.com](http://www.skcr.com)

900 Circle 75 Parkway #720, Atlanta, GA 30339

## AVAILABLE SPACE:

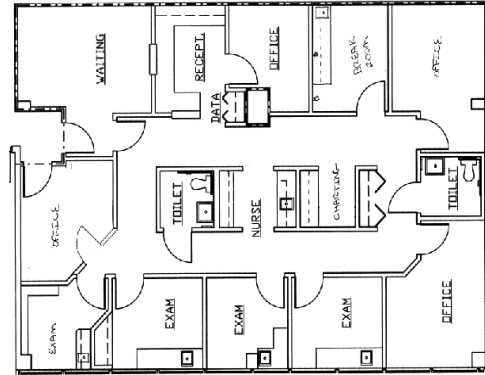
### SUITE 105

Size: 1,629 RSF

Exam Rooms: 4

Private Offices: 4

Restrooms: 2



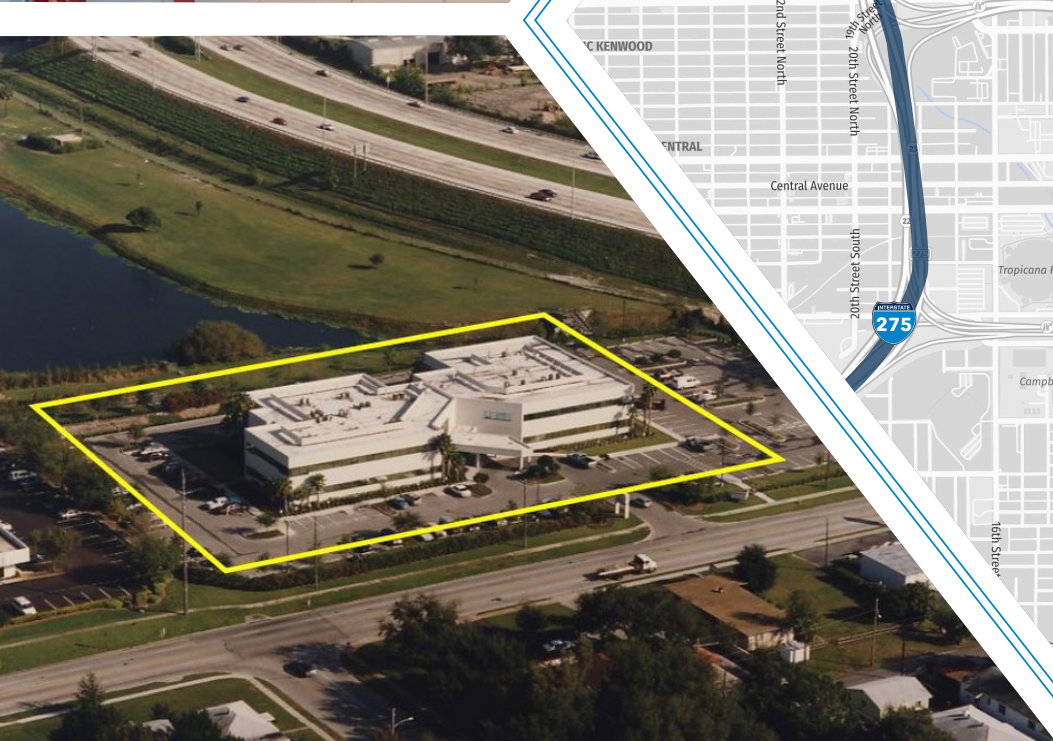
### AVAILABILITY:

- » Class B Medical Office Space
- » 38,580 Total SF in 2 Stories
- » 5,333 SF Largest Contiguous Space
- » 2,229-3,104 SF Available For Lease

### FEATURES:

- » Excellent location to access downtown St. Petersburg market, Kenwood, and all of St. Petersburg
- » Minutes from St. Anthony's Hospital
- » Easy access to Highway 19 N and Interstate
- » Ample Parking





**SITE**



**DOWNTON ST PETERSBURG**



**CONTACT:**

**Hugh Scott, Jr.**  
404.630.2850 // [hughscott@skcr.com](mailto:hughscott@skcr.com)

**Sam Farmer**  
678.371.7216 // [sfarmer@skcr.com](mailto:sfarmer@skcr.com)

