



For Sale

\$549,000

~~\$650,000~~

39,872 SF Parcel

Contact us:

Jack Peterson

Senior Director

+1 205 401 0101

Jack.Peterson@colliers.com



POB/MOB Site Patton Chapel Road, Hoover

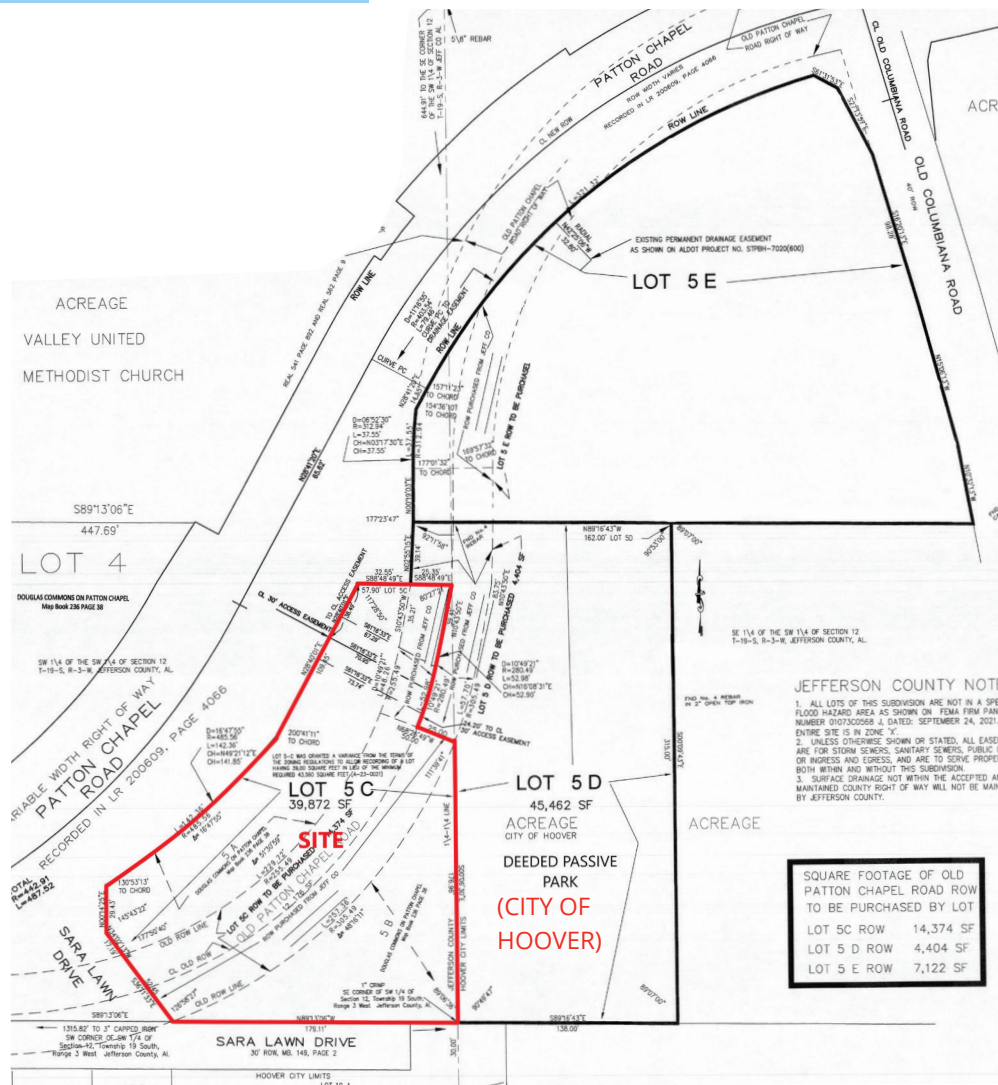
1925 Patton Chapel Road Hoover, AL

Building Highlights

- ± 39,872 SF, a block up from Hwy 31 Hoover retail corridor
- Graded site with utilities readily available
- Patton Chapel Rd newly widened to 5-lanes with center turn lane serving site

This document/email has been prepared by Colliers for advertising and general information only. Colliers makes no guarantees, representations or warranties of any kind, expressed or implied, regarding the information including, but not limited to, warranties of content, accuracy and reliability. Any interested party should undertake their own inquiries as to the accuracy of the information. Colliers excludes unequivocally all inferred or implied terms, conditions and warranties arising out of this document and excludes all liability for loss and damages arising therefrom. This publication is the copyrighted property of Colliers and/or its licensor(s). © 2024. All rights reserved. This communication is not intended to cause or induce breach of an existing listing agreement. Colliers | Alabama

Property Overview



Address:	1925 Patton Chapel Road
Parcel Size:	0.92 acres / ±39,872 SF
Utilities:	Jefferson County Sewer
Site Condition:	Graded to almost-finished condition; relatively level
Entitlement:	Site is a combination of 3 smaller parcels, new plat approved. Currently zoned A-1 (Jefferson County). Will accept rezoning contingency.
Development	Site supports 5,000 SF+ MOB/POB building and parking.

Contact us: Jack Peterson
 Senior Director
 +1 205 401 0101
 Jack.Peterson@colliers.com

Colliers | Alabama
 880 Montclair Road, Suite 250
 Birmingham, AL 35213
 +1 205 445 0955
 www.colliers.com

Colliers