



OFFICE FOR LEASE

8,200 SF, 10,123 SF, & 15,619 SF

**1 Bausch and Lomb Pl,
Rochester, NY 14604**

Legacy Tower is a premier Class A office destination in the heart of downtown Rochester. With expansive layouts, modern meeting and training rooms, and a grand marble entry, this landmark building offers the space, presence, and convenience your business needs to thrive. Enjoy unmatched amenities and sweeping views—all just steps from the city's best dining, services, and entertainment.

PROPERTY

highlights

- ✓ Direct Tunnel Access to Parking Garage
- ✓ Stunning Downtown Views
- ✓ Onsite Café - The Wintergarden Café
- ✓ Free Access to On-site Fitness Center
- ✓ On-site Front Desk Security
- ✓ 24/7 Training Rooms Access



OPEN FLOORPLAN



TRAINING ROOM



CONFERENCE ROOMS



KITCHENETTE



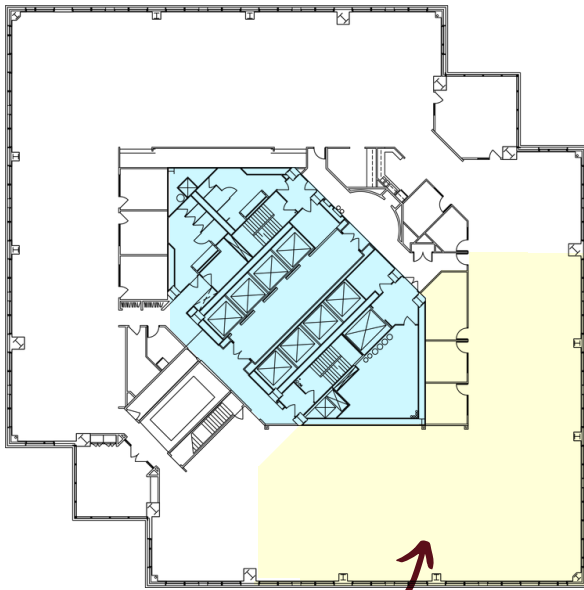
**BUCKINGHAM
PROPERTIES**



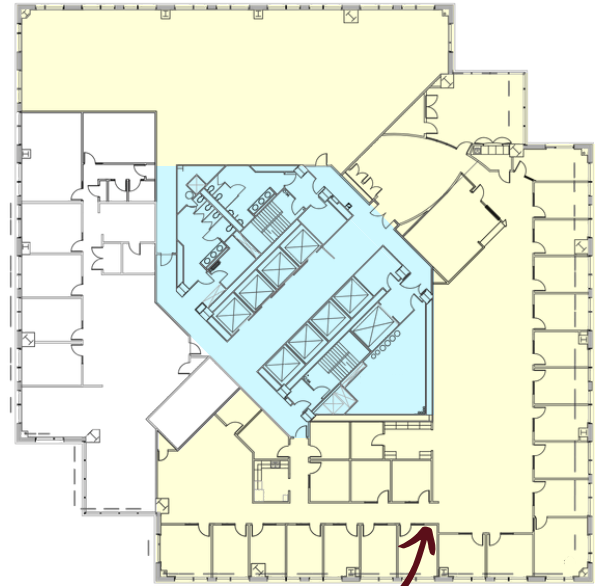
ADAM BORRELL

Senior Leasing Executive

(585) 615-3593 | aborrell@buckprop.com



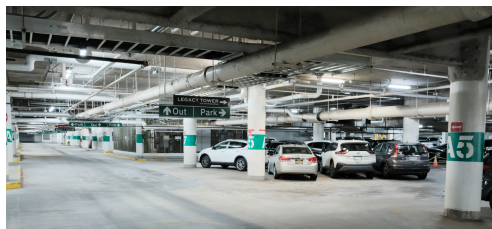
4th Floor - **8,200 SF**



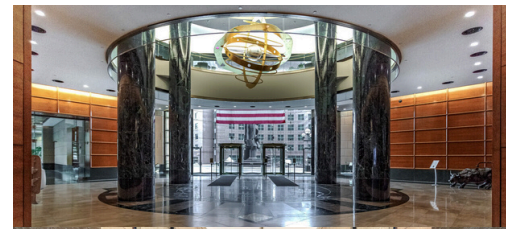
7th Floor - **15,619 SF**



FULL ON-SITE FITNESS CENTER



ON-SITE PARKING GARAGE WITH DIRECT TUNNEL ACCESS



MAKE AN IMPRESSION WITH A STUNNING, HIGH-END LOBBY



**BUCKINGHAM
PROPERTIES**



ADAM BORRELL

Senior Leasing Executive

(585) 615-3593 | aborrell@buckprop.com