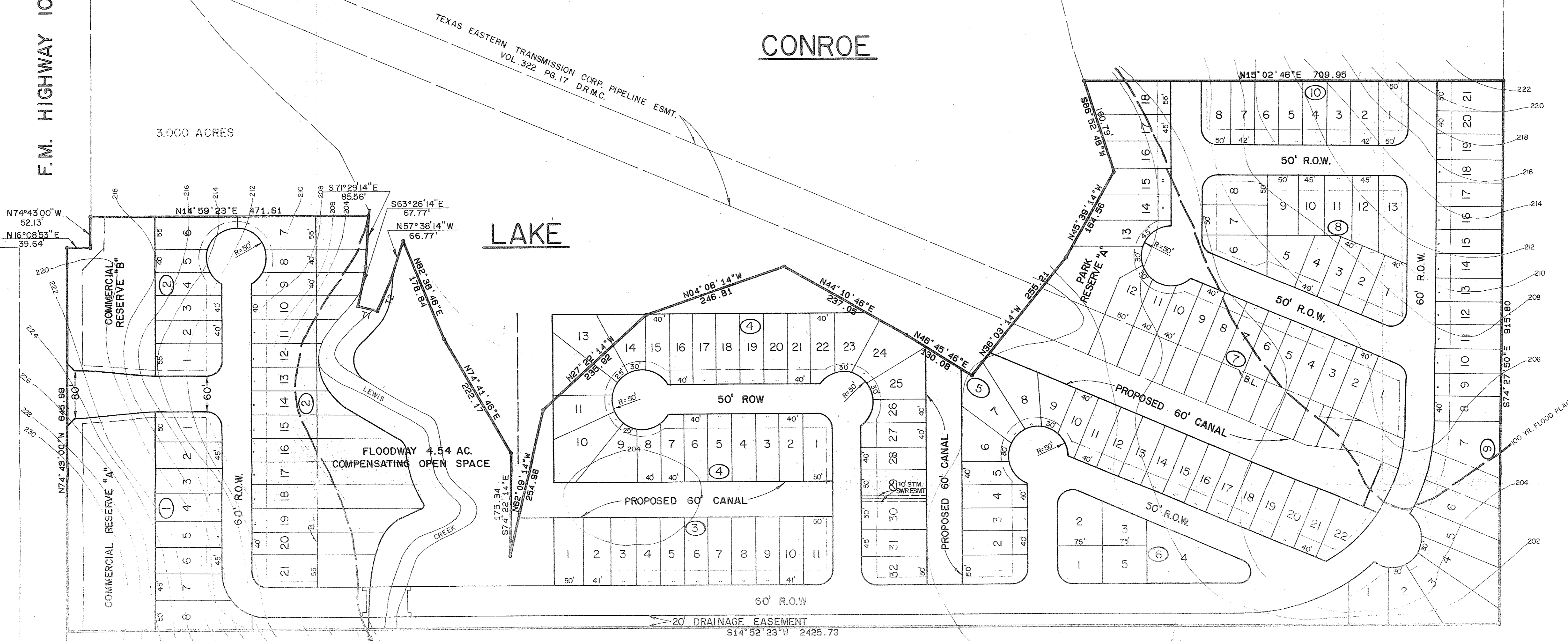


F.M. HIGHWAY 1097



T1	N28°51'46"W	33.96'
T2	N50°36'14"W	59.49'

GULF STATES UTILITIES COMPANY
VOL. 644 PG. 696 AND VOL. 645 PG. 630 D.R.M.C.

ANGLER'S BAY

A SUBDIVISION CONTAINING 36.834 ACRES
159 LOTS 3 RESERVES

CANAL FRONT LOTS - 75
LAKE FRONT LOTS - 23
INTERIOR LOTS - 61
TOTAL - 159

OUT OF THE
NEAL MARTIN SURVEY A-26
MONTGOMERY COUNTY, TEXAS
SCALE: 1" = 100' MAY 1986

PREPARED BY



Dan Sherwood & Assoc., Inc.
CONSULTING ENGINEERS/HOUSTON, TEXAS
15555 KUYKENDAHL SUITE 150
HOUSTON, TEXAS 77090
PHONE: (713) 440-1703