

4013 ESTES PARKWAY
LONGVIEW, TEXAS 75603



Offered Exclusively by:
Beer Wells Real Estate Services –
East Texas, Inc.
P. O. Box 3449
Longview, TX 75606

www.beerwellseasttexas.com

For more information contact:

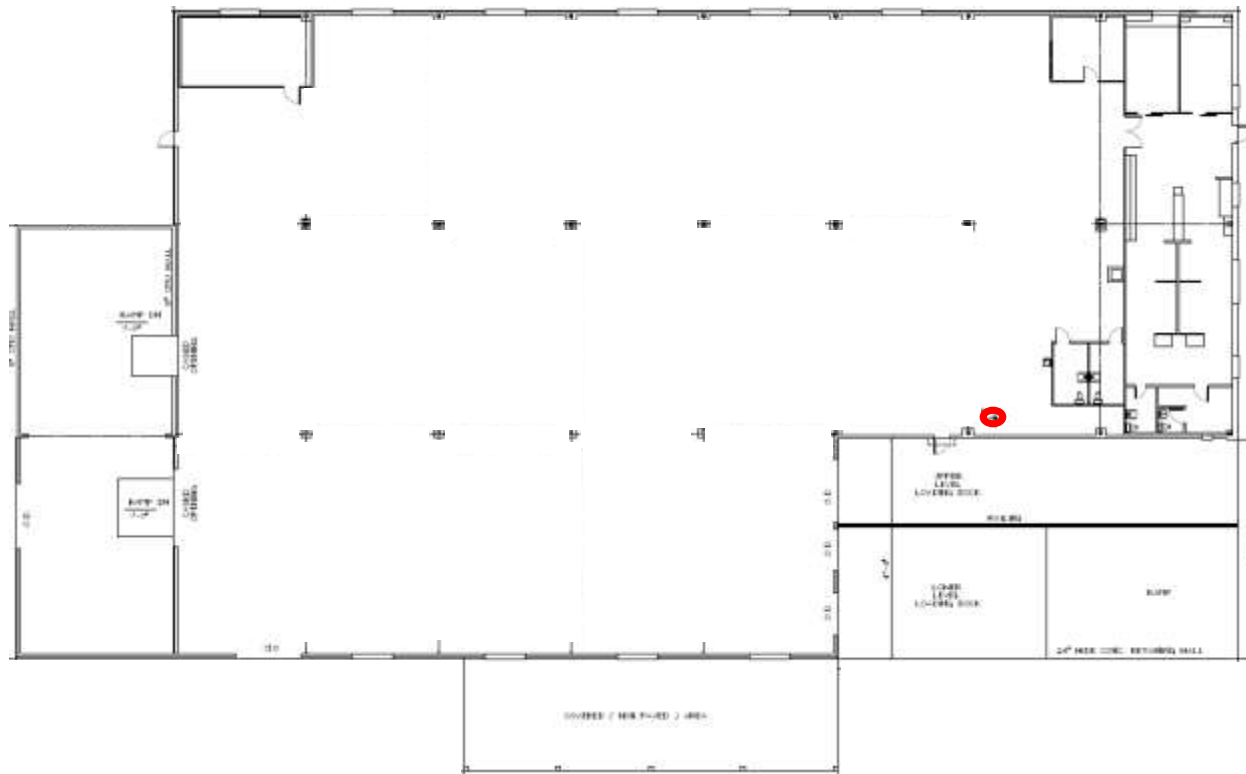
Walter R. Northcutt
(903) 753-2191
wnorthcutt@beerwellseasttexas.com

PROPERTY INFORMATION

Location:	4013 Estes Parkway
General Access:	Estes Parkway
Gross Leasable Area:	Approximately 23,822 SF Lot Size: 1.579 acres
Amenities:	Fire sprinkler system High visibility Easy access, Excellent signage Ample parking Close proximity to I-20
Zoning:	Commercial

Floor Plan

(Actual layout may vary)

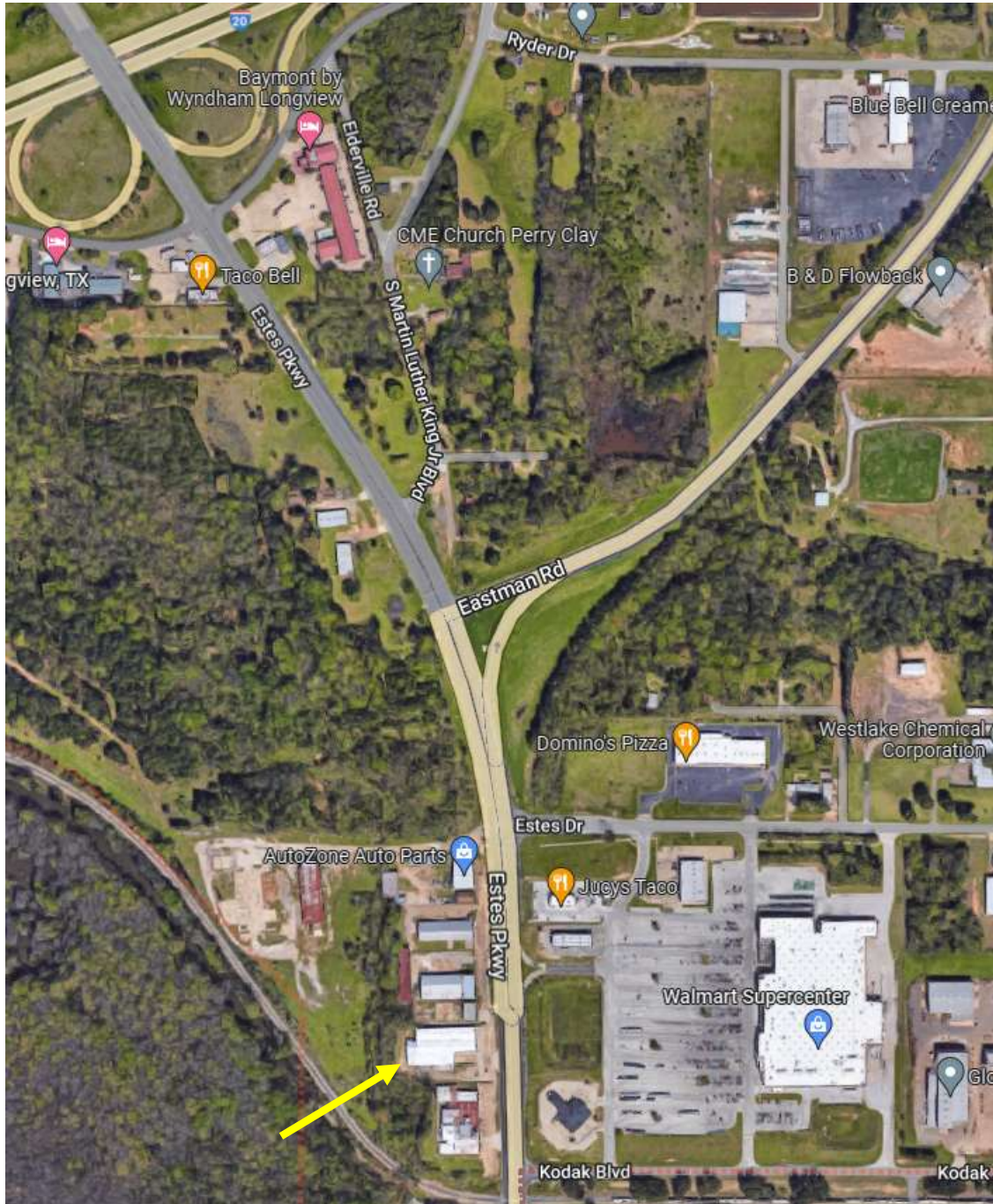


● Fire Riser

4013 ESTES PARKWAY
LONGVIEW, TEXAS 75063



AERIAL



This information has been secured from sources we believe to be reliable, but we make no representations or warranties, expressed or implied, as to the accuracy of the information. References to square footage, boundary lines or age are approximate.

4013 ESTES PARKWAY
LONGVIEW, TEXAS 75603



TRAFFIC COUNTS



This information has been secured from sources we believe to be reliable, but we make no representations or warranties, expressed or implied, as to the accuracy of the information. References to square footage, boundary lines or age are approximate.