

- Cardinal Street IMA
- CCPA Street Centerlines
- CCPA Parcels

- Vacant Residential
- Single-Family Residential
- Mobile Home
- Condominium

- Misc. Residential
- Multi-Family Residential
- Vacant Commercial
- Commercial Retail/Service
- Office/Professional Buildings

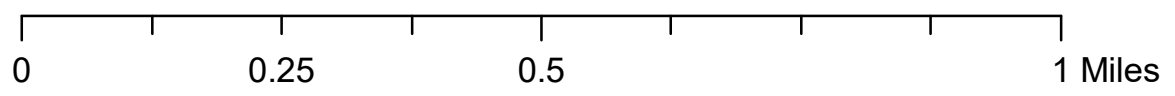
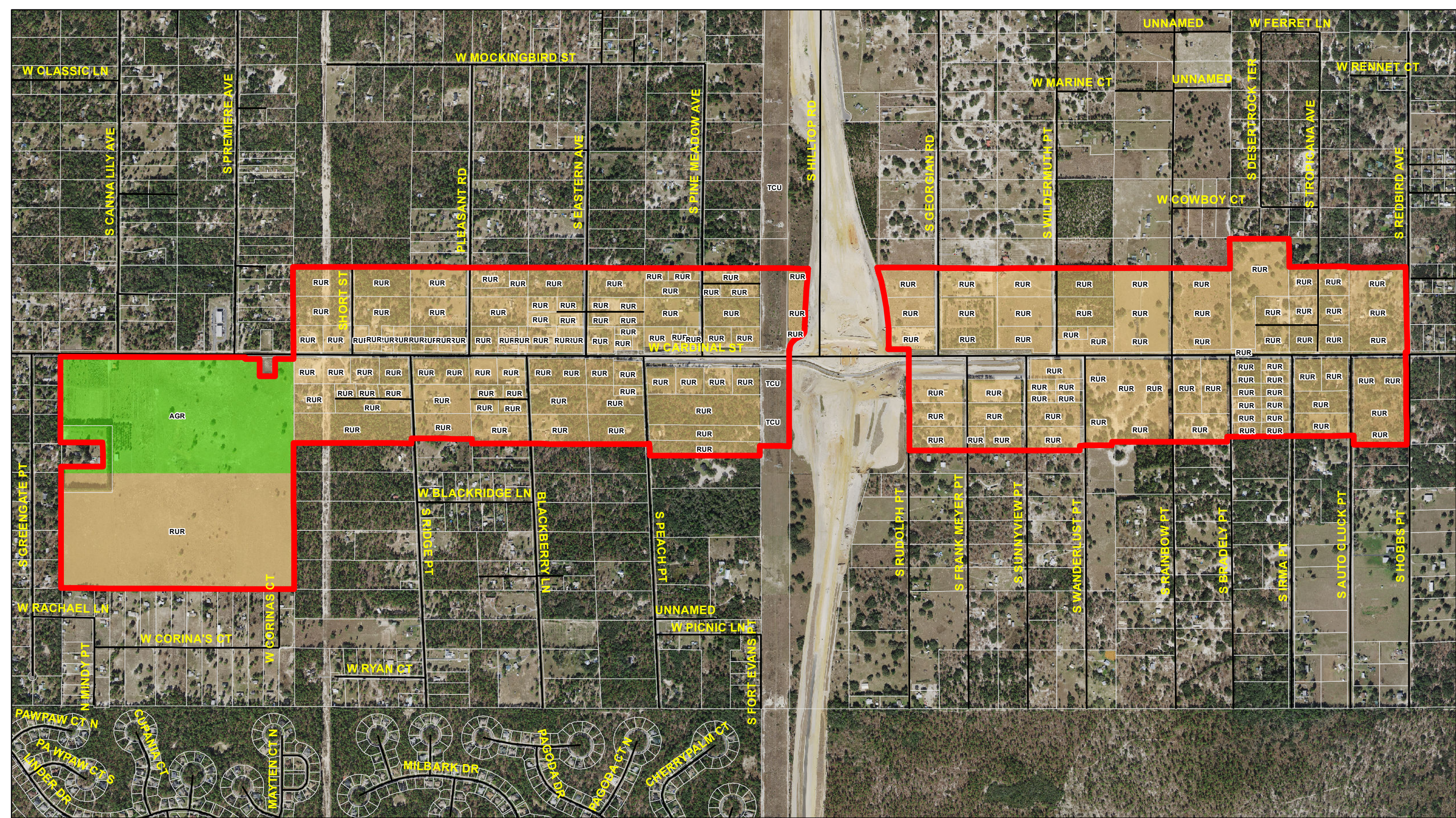
- Commercial Recreation
- Vacant Industrial
- Industrial
- Agricultural
- Vacant Institutional

- Institutional
- Vacant Public/Governmental
- Public/Governmental
- Utilities/Extraction/Right-of-Way
- Not Classified

CARDINAL STREET IMA

Existing Use Map

Source: Citrus County Property Appraiser Parcel Data, Street Centerline, Land Use/
Department of Revenue Codes, January 2022
Map Created: May 25, 2022



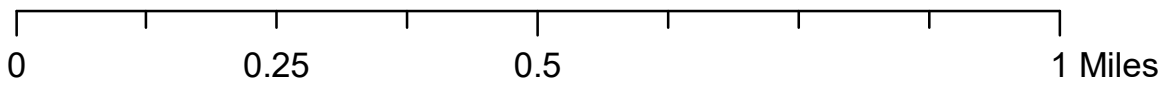
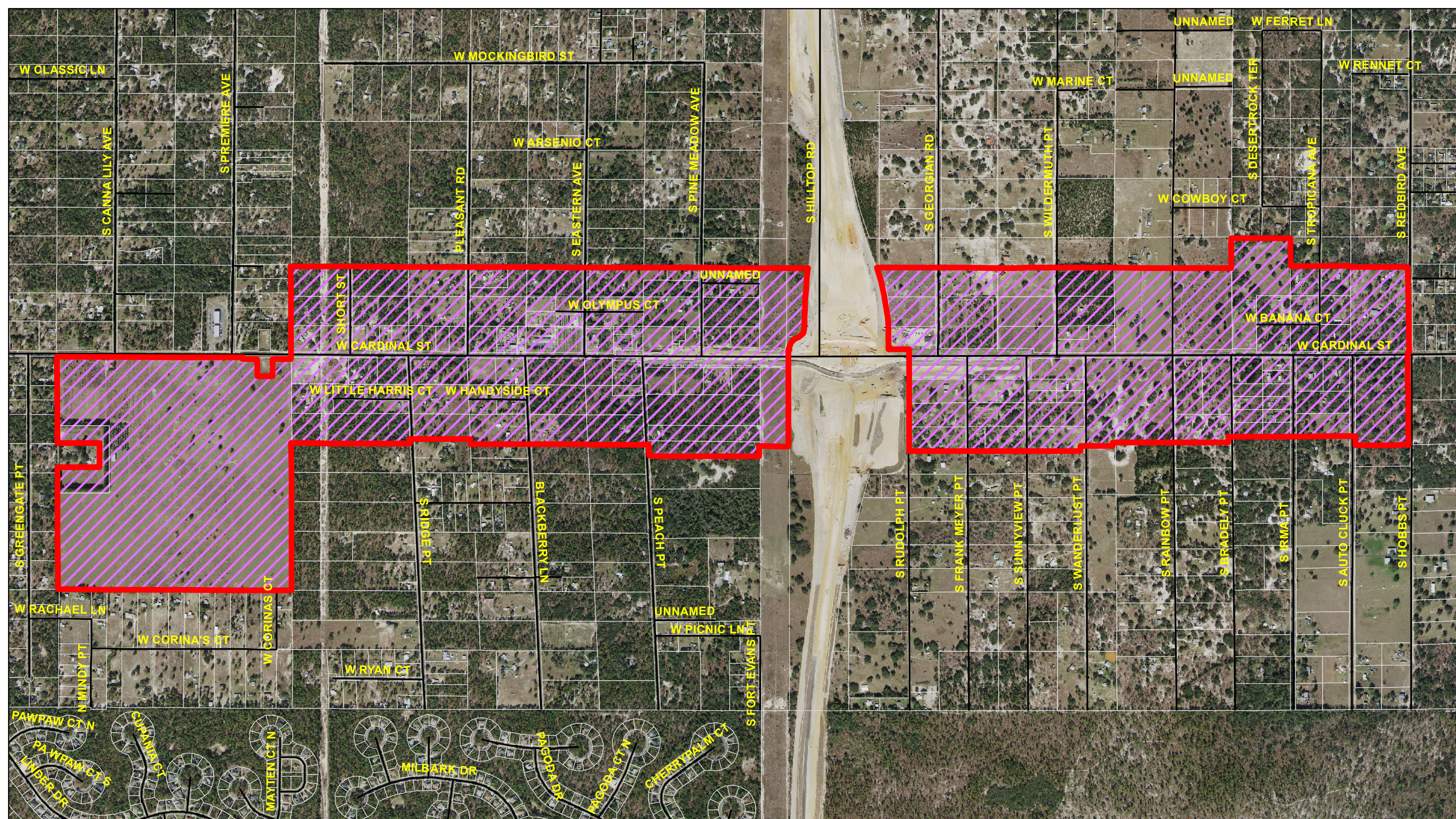
- Cardinal Street IMA
- CCPA Street Centerlines
- CCPA Parcels

- Future Land Use Map**
- AGR - Agriculture
 - RUR - Rural Residential

CARDINAL STREET IMA

Future Land Use Map

Source: Citrus County Property Appraiser Data, Street Centerlines, January 2022;
 Citrus County GIS, Future Land Use Map, January 2022
 FDOT, APlus Aerial Photography, 2020
 Date Created: May 25, 2022

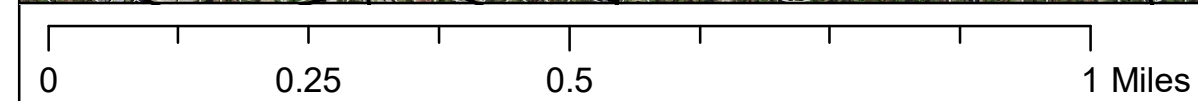
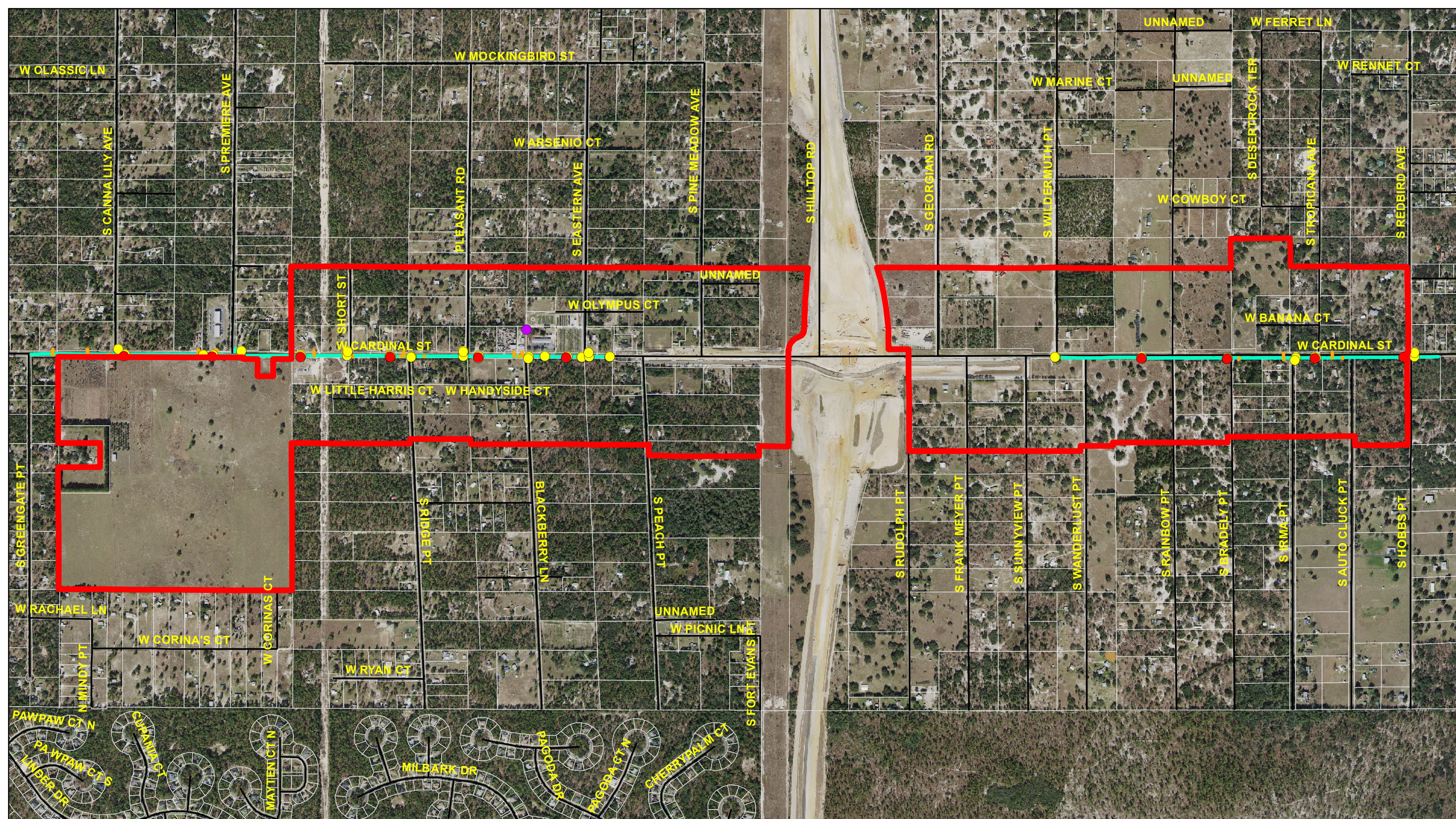


- Cardinal Street IMA
- CCPA Street Centerlines
- CCPA Parcels
- Cardinal Mixed Use (CMU) Potential

CARDINAL STREET IMA

Cardinal Mixed Use (CMU) Potential

Source: Citrus County Property Appraiser Parcel Data, Street Centerlines, January 2022; Citrus County BCC, CMU FLUM Category, January 2021; FDOT, APlus Aerial Photography, 2020; Date Created: May 25, 2022

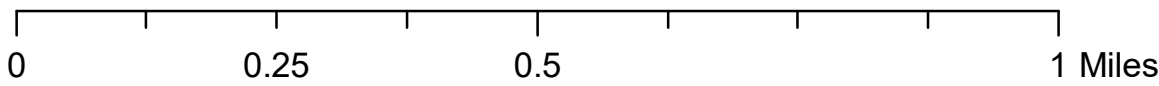
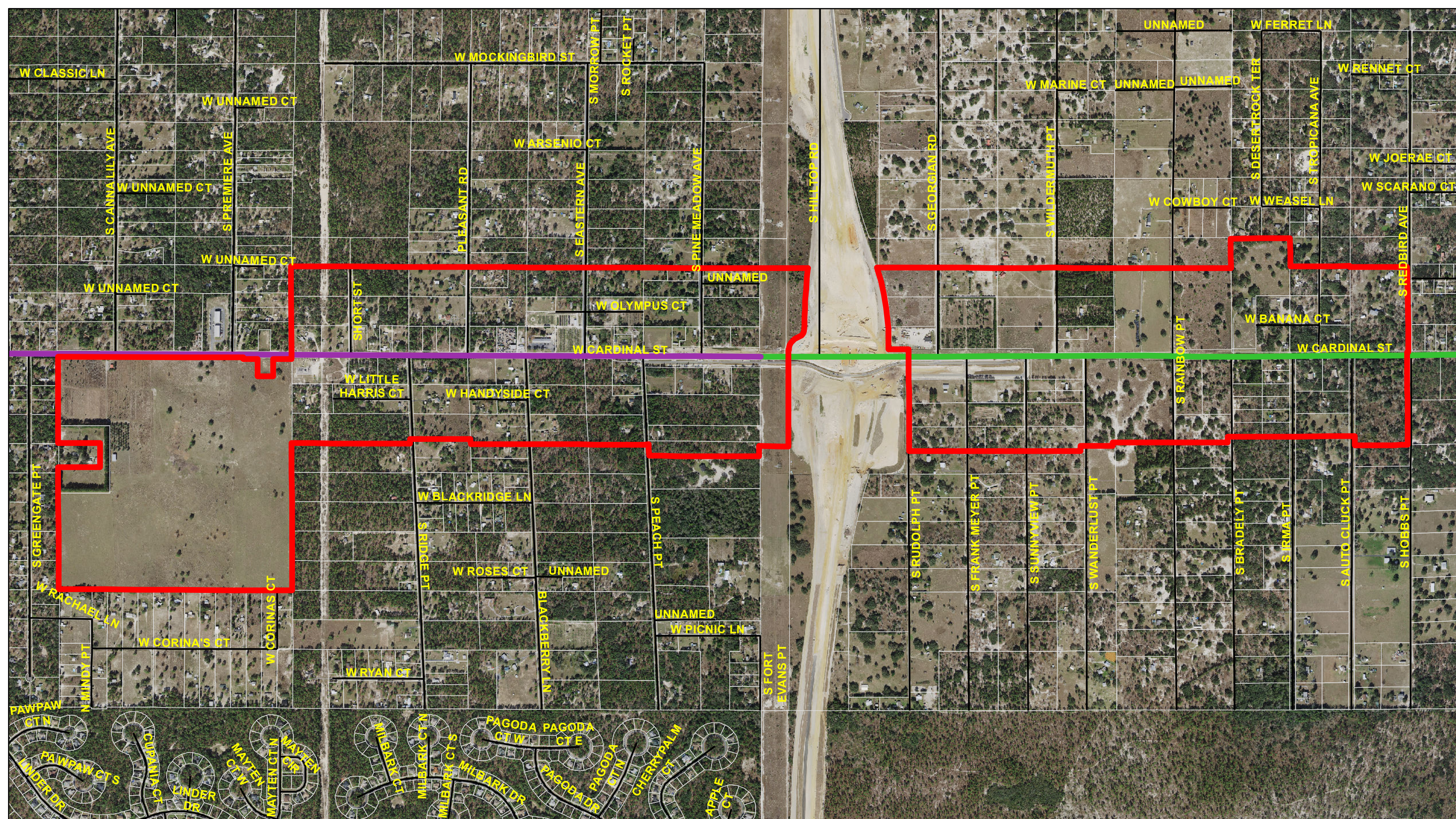


- Cardinal Street IMA
- CCPA Parcels
- CCPA Street Centerlines
- CardinalIMAwValves
- CardinalIMAwHydrant
- CardinalIMAwNetworkStructure
- CardinalIMAwLateralLine
- CardinalIMAwMain

CARDINAL STREET IMA

Utilities Use Map

Source: Citrus County Property Appraiser Parcel Data, Street Centerlines, January 2022; Citrus County GIS, Utilities, January 2022; FDOT, APlus Aerial Photography, 2020
Map Created: May 25, 2022

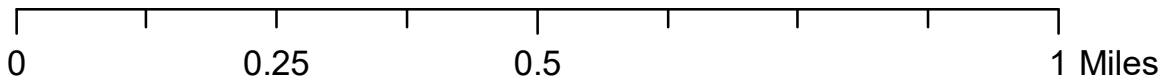
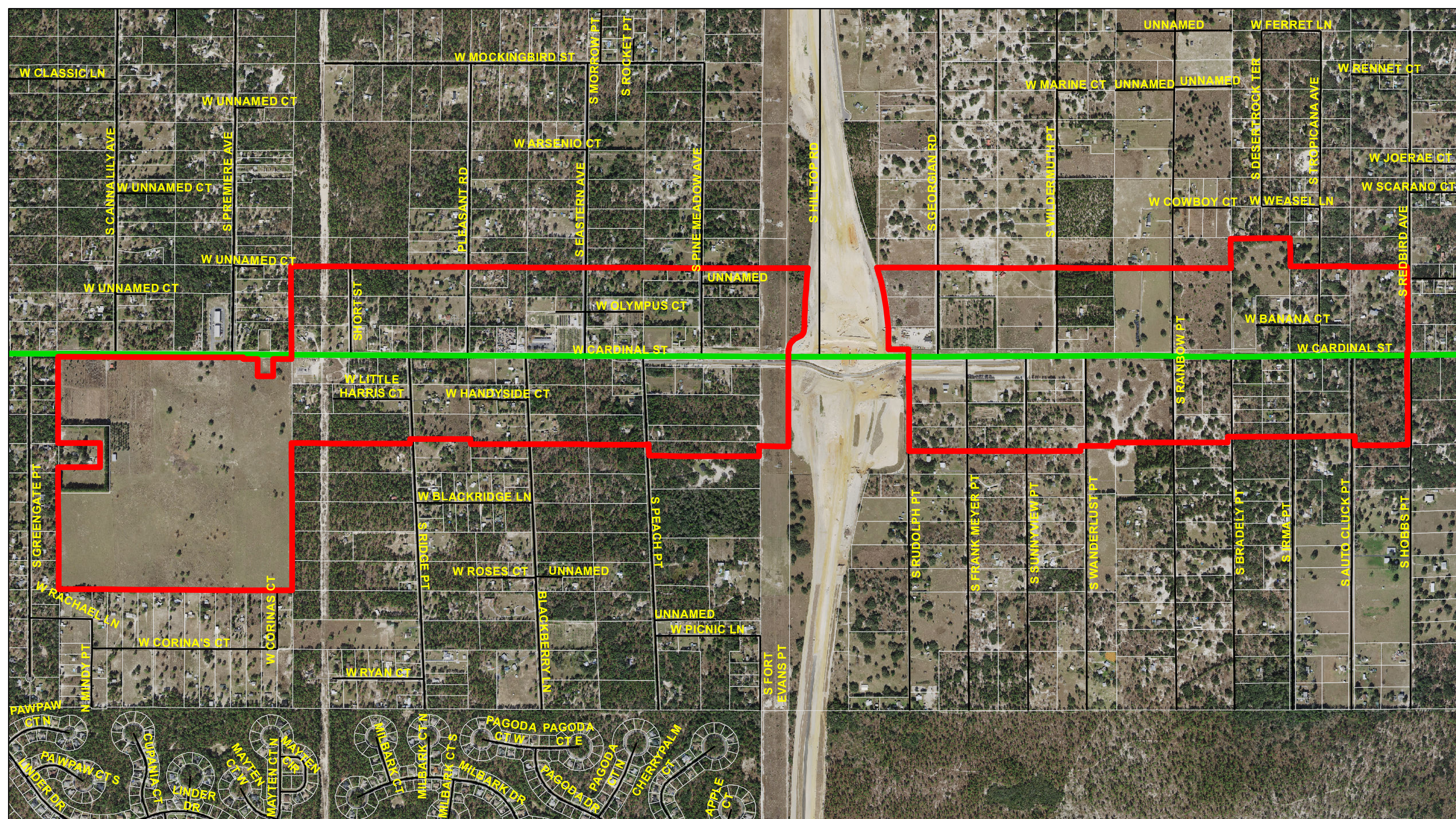





- Cardinal Street IMA
- CCPA Street Centerlines
- CCPA Parcels
- Roadway Classification**
- Rural Major Collector
- Urban Major Collector

CARDINAL STREET IMA


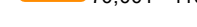

Roadway Classification Map

Source: Citrus County Property Appraiser Parcel Data, Street Centerlines, January 2022; FDOT, Functional Roadway Classifications, May 2022; FDOT, APlus Aerial Photography, 2020
Date Created: May 25, 2022



-  Cardinal Street IMA
-  CCPA Street Centerlines
-  CCPA Parcels

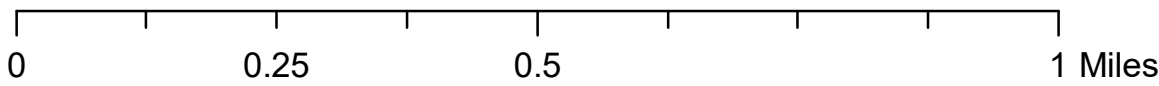
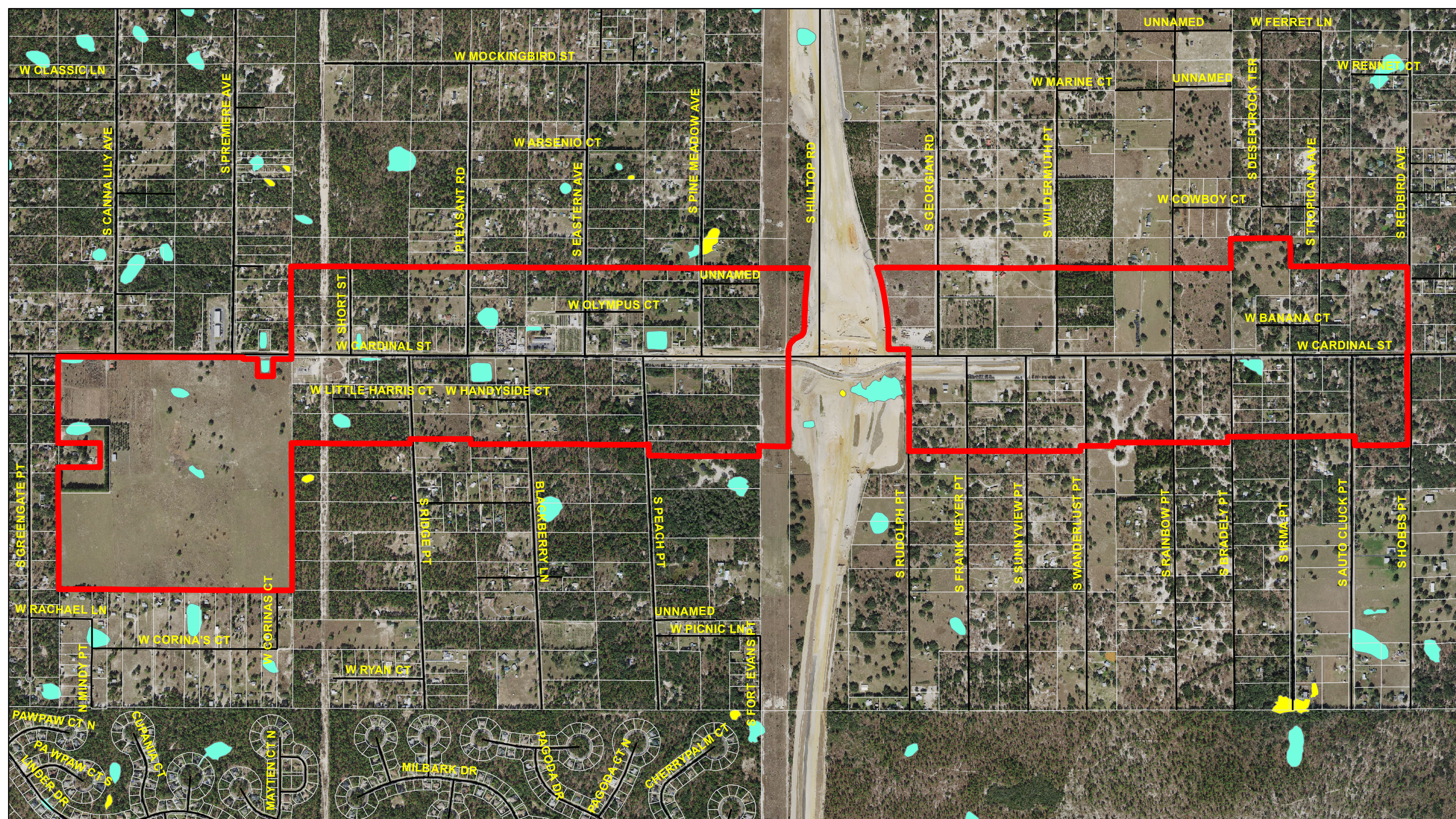
Annual Average Daily Traffic (SECTADT)

-  0 - 15,000
-  15,001 - 30,000
-  30,001 - 50,000
-  50,001 - 70,000
-  70,001 - 110,000
-  110,001 - 160,000
-  > 160,000

CARDINAL STREET IMA

Traffic Counts Map

Source: Citrus County Property Appraiser Data, Street Centerlines, January 2022;
 FDOT AADT Traffic Counts, May 2022
 FDOT APlus Aerial Photography, 2020
 Date Created: May 25, 2022



- Cardinal Street IMA
- CCPA Street Centerlines
- CCPA Parcels
- A
- AE
- OPEN WATER
- VE
- X

CARDINAL STREET IMA

Flood Hazard Map

Source: Citrus County Property Appraiser Parcel Data, Street Centerlines, January 2022;
 FEMA, Flood Hazard Zones, May 2022
 FDOT, APlus Aerial Photography, 2020
 Date Created: May 25, 2022

