



# **GOLD AND COMPANY, LLC**

**WWW.GOLDCOMMERCIAL.NET**

***Commercial Real Estate in the Baltimore Metropolitan Area***



**6624 Quad Ave. Baltimore, MD 21237**

## **Gold And Company, LLC**

**5601 Newbury St.  
Baltimore, MD 21209**

***For More Information:***

**Jim Chivers  
Sr. Vice President  
443.928.7522 cell  
jim@goldcommercial.net**

**Will McCullough, SIOR  
Vice President  
410.292.2985 cell  
will@goldcommercial.net**

**www.goldcommercial.net**

- **Recently Renovated Industrial Properties**
- **Total of 15,000 sf in Two Buildings FOR LEASE**
- **Can Be Leased Separately or in its Entirety**
- **Drive-in and Dock Loading Platform**
- **Zoned I-2 (Heavy Industrial)**
- **.991 Acres**
- **Close to I-95—East Baltimore City Industrial**
- **Proximity to Ports of Baltimore**
- **Contact For More Information**

This property offering is subject to change without notice. All information is deemed reliable but not guaranteed.



# **Gold And Company**

**Commercial Real Estate in the Baltimore Metropolitan Area**

**6624 Quad Ave. Baltimore, MD 21237**

## **Aerial**



**Jim Chivers / Will McCullough**  
**Gold And Company, LLC**  
**5601 Newbury St.**  
**Baltimore, MD 21209**

**410.578.1300 (Office)**

**[www.goldcommercial.net](http://www.goldcommercial.net)**



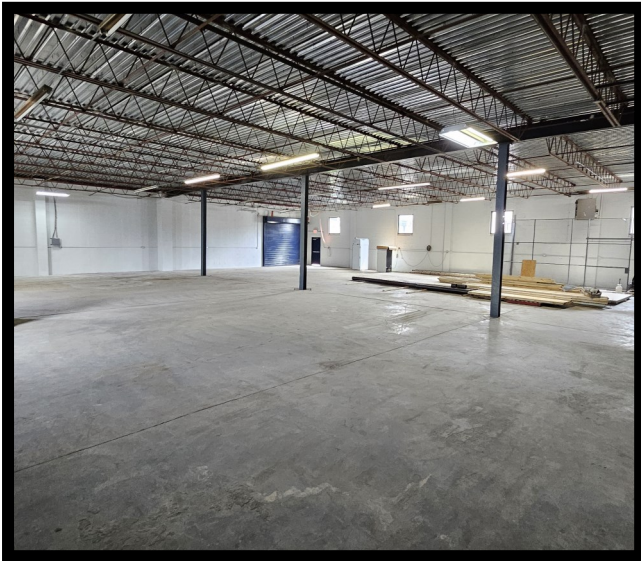


# **Gold And Company**

**Commercial Real Estate in the Baltimore Metropolitan Area**

**6624 Quad Ave. Baltimore, MD 21237**

## **Interior Pictures**



**Jim Chivers / Will McCullough**  
**Gold And Company, LLC**  
**5601 Newbury St.**  
**Baltimore, MD 21209**

**410.578.1300 (Office)**

**[www.goldcommercial.net](http://www.goldcommercial.net)**



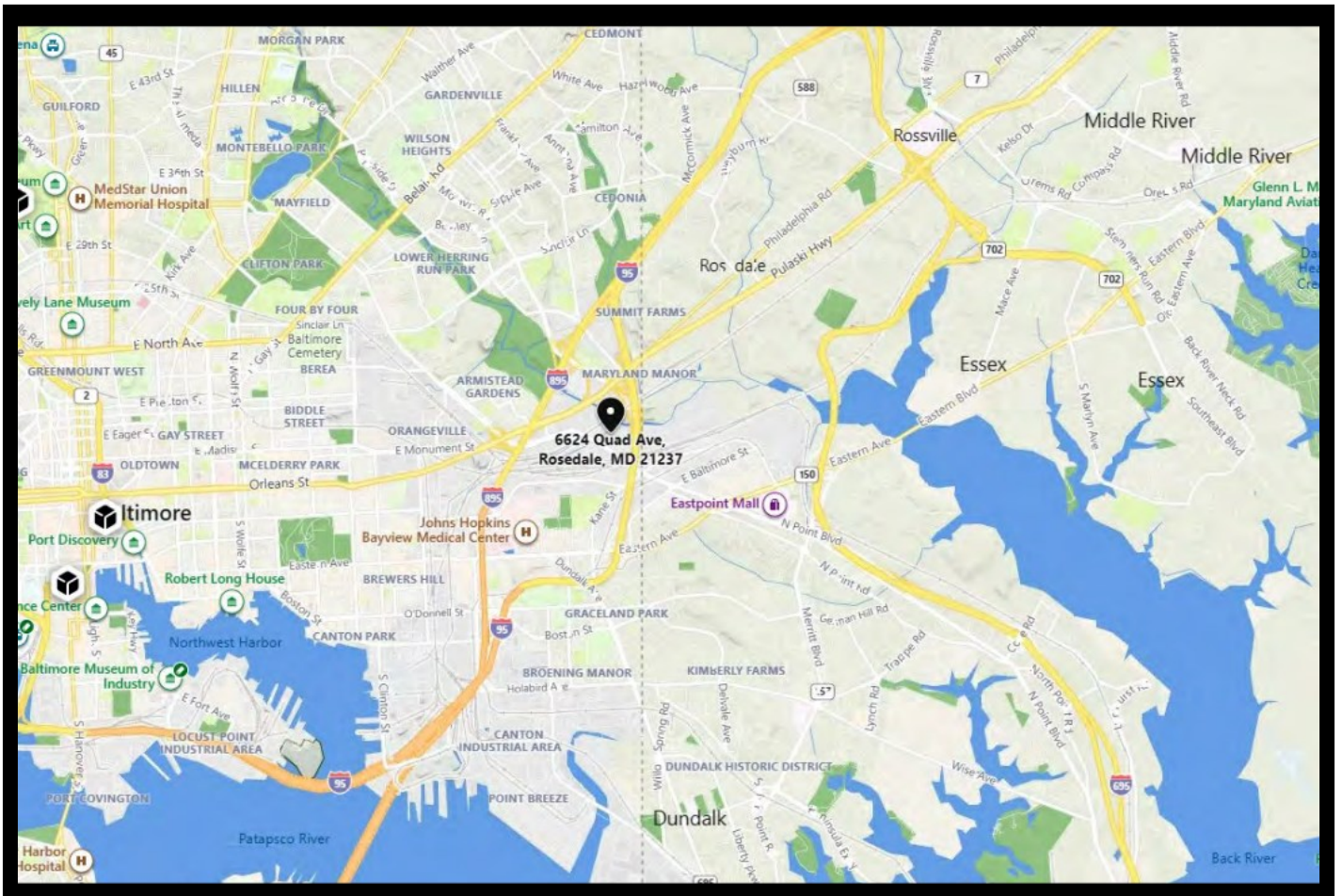


# **Gold And Company**

**Commercial Real Estate in the Baltimore Metropolitan Area**

**6624 Quad Ave. Baltimore, MD 21237**

## **Location Map**



**Jim Chivers / Will McCullough**  
**Gold And Company, LLC**  
**5601 Newbury St.**  
**Baltimore, MD 21209**

**410.578.1300 (Office)**

**[www.goldcommercial.net](http://www.goldcommercial.net)**

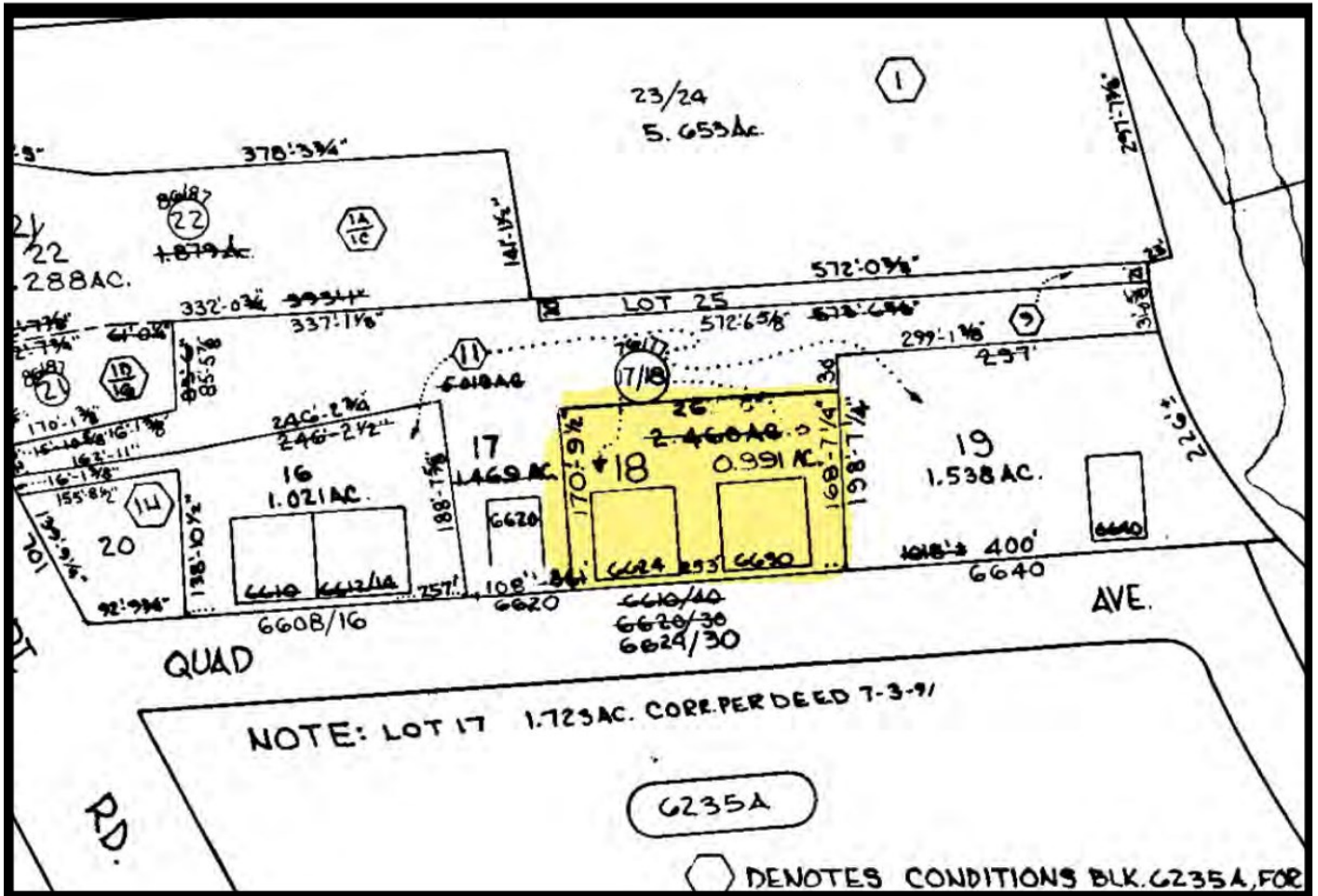


# Gold And Company

Commercial Real Estate in the Baltimore Metropolitan Area

**6624 Quad Ave. Baltimore, MD 21237**

## Block Map



Jim Chivers / Will McCullough  
Gold And Company, LLC  
5601 Newbury St.  
Baltimore, MD 21209

410.578.1300 (Office)

[www.goldcommercial.net](http://www.goldcommercial.net)