

Newburgh Professional Park 16824-16846 Newburgh Road Livonia, MI

FOR SALE / LEASE

- West building: 16826-16824 Newburgh Road
- East building: 16836-16846 Newburgh Road
- Located on the east side of Newburgh Road, just south of 6 Mile
- Two building general and medical office park
- Two building total: 18,301 SF
- 116 parking spots for both buildings
- Most patients/patrons have immediate access to the tenant's entrance areas
- Lease available: 6,530 SF (can be divided)
- 8.49% Cap Rate Owner User Potential
- \$200-\$250K NOI Owner User Potential
- Land contract available
- Sale Price: Contact Agent



CONTACT US

248-710-8000

691 N. Squirrel Rd, Suite 290

Auburn Hills, MI 48326

www.team-core.com



Kevin N. Tamer
Vice President /
Associate Broker
734 -624 - 3729
knt@team-core.com



Philip A. Wojtowicz
Senior Vice President/
Associate Broker
Office: 248-710-8000
Cell: 248-408-2754
paw@team-core.com



Samuel A. McLean
Vice President
248 -935 - 7237
sam@team-core.com



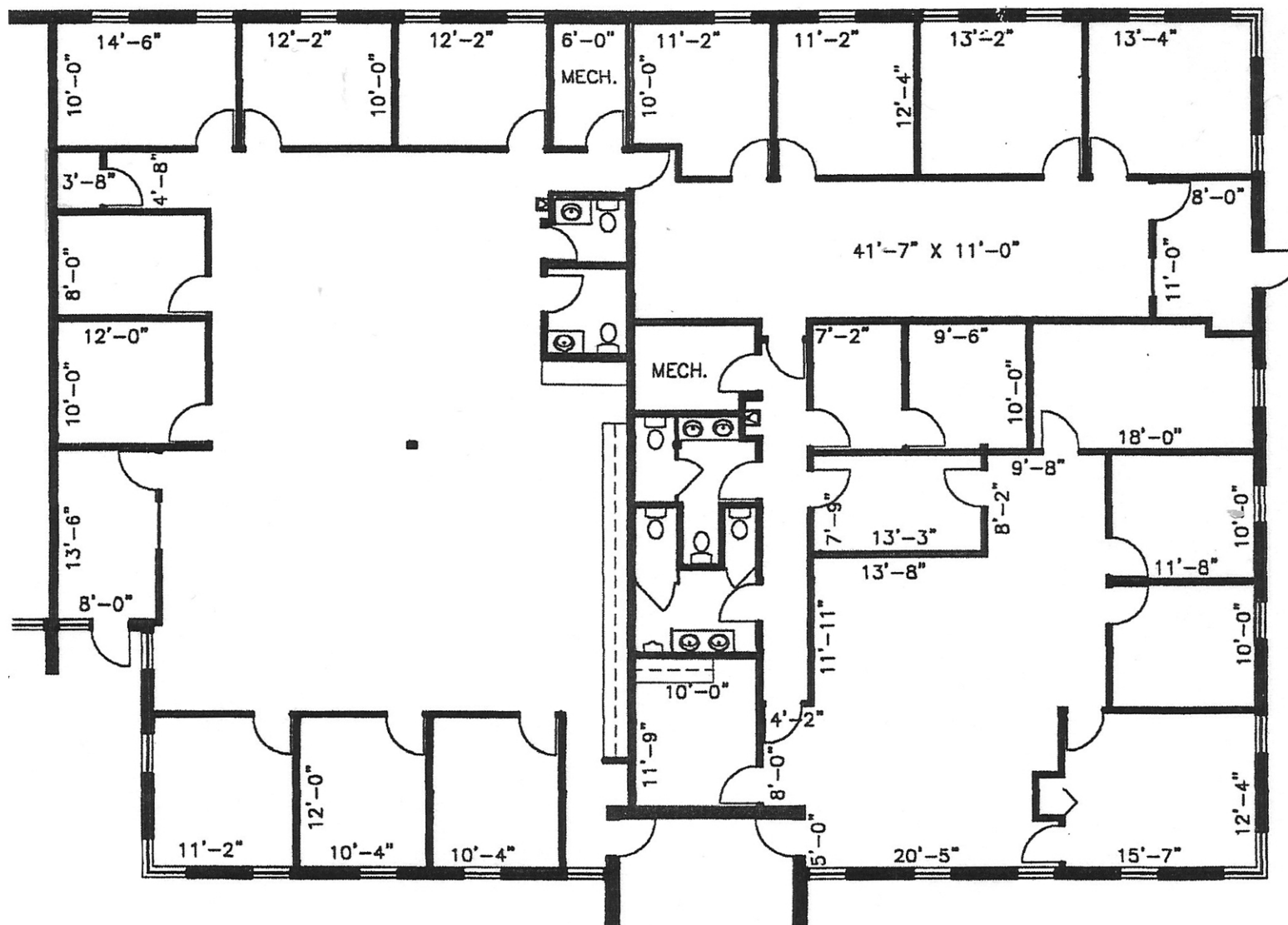
Kevin N. Tamer
Vice President /
Associate Broker
734 -624 - 3729
knt@team-core.com



Philip A. Wojtowicz
Senior Vice President/
Associate Broker
Office: 248-710-8000
Cell: 248-408-2754
paw@team-core.com



Samuel A. McLean
Vice President
248 -935 - 7237
sam@team-core.com



DO NOT SCALE



16824 - 16846 Newburgh Rd.
Livonia, MI
DRAFT-Conceptual Split of Suite

2,000 - 6,530 SF
For More Information Please Call:
248.710.8000

