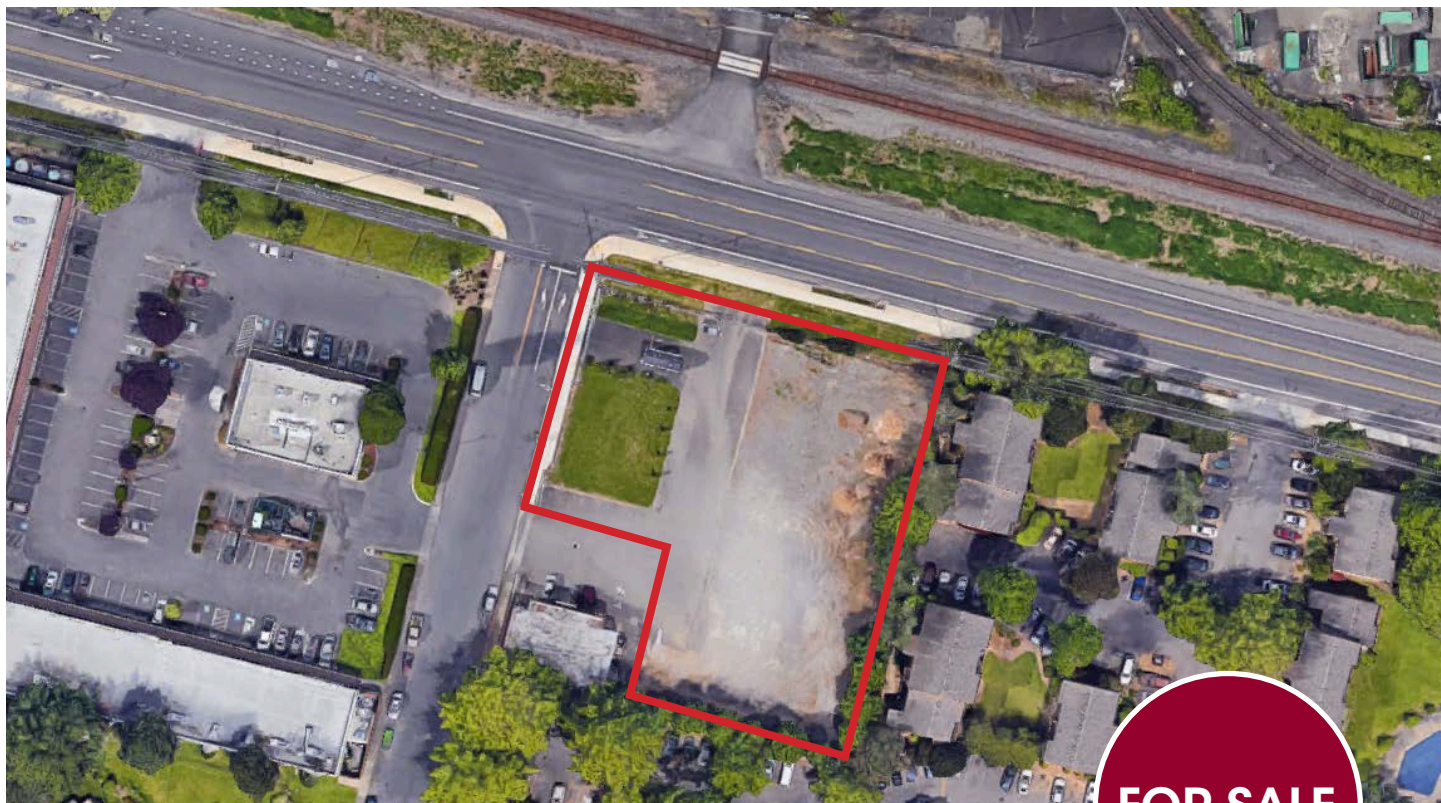


VACANT PARCEL AVAILABLE

NE Sandy Boulevard & NE 141st Drive, Portland, Oregon



PROPERTY DESCRIPTION

PARCEL SIZE

41,268 SF (0.947 Acres)

ZONING

CN2 - Neighborhood Commercial
Uses include retail sales and service

UTILITIES

Storm gravity main located in NE 141st Drive
Sanitary gravity main located in NE Sandy Blvd.

SALE PRICE

\$825,360 (\$20/SF)



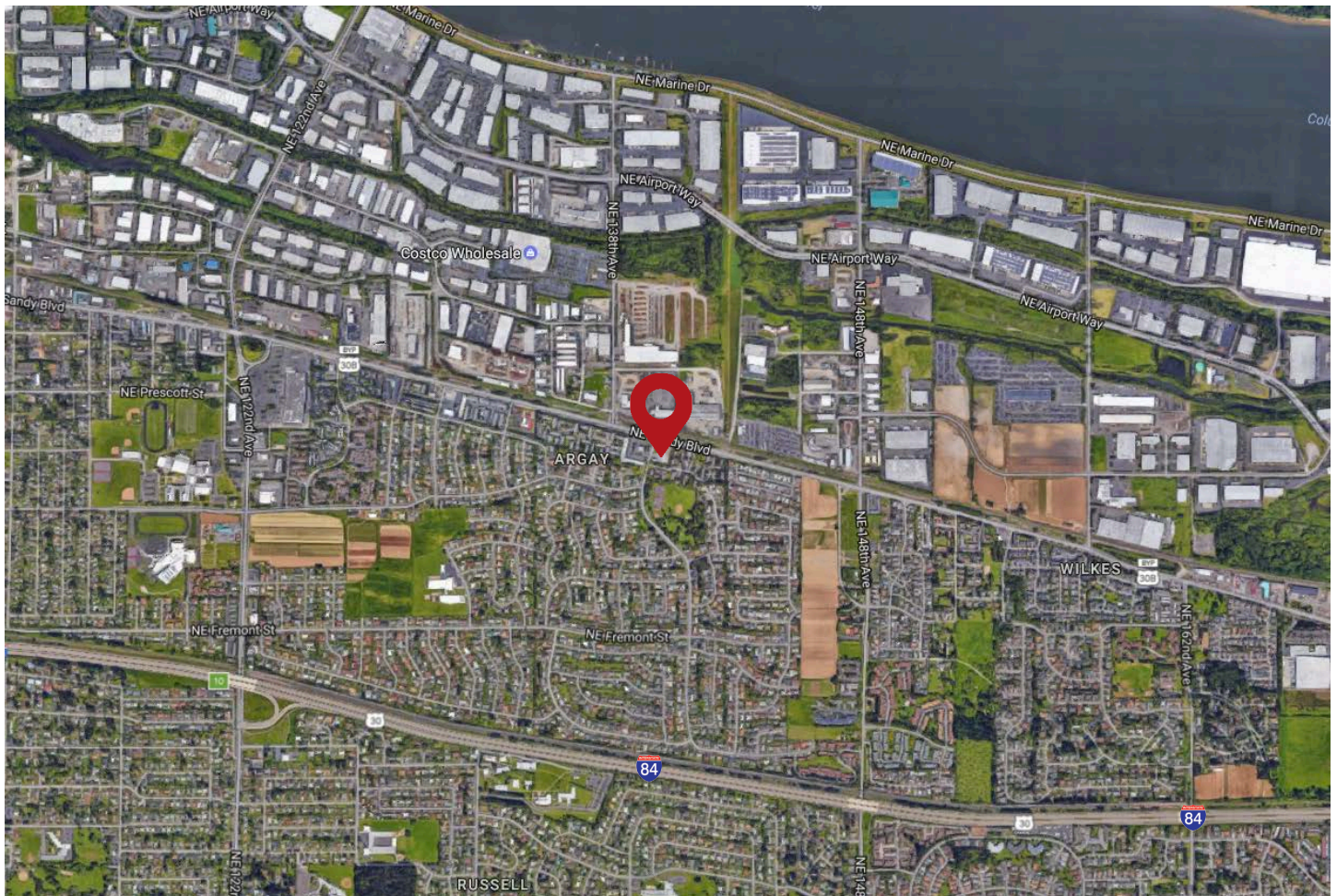
Brett Bayne
503.972.7280
bayne@macadamforbes.com

1800 SW First Avenue, Suite 650 | Portland OR 97201 | WWW.MACADAMFORBES.COM | 503.227.2500

NE Sandy Blvd. & NE 141st Dr.

FOR SALE

Portland, Oregon



DEMOGRAPHICS

	1 Mile	3 Miles
Population	10,962	95,619
Households	4,173	36,158
Median HH Income	\$53,307	\$45,446
Pop. Growth '16-'21	↑5.81%	↑5.70%
HH Growth '16-'21	↑5.75%	↑5.70%



Brett Bayne
503.972.7280
bayne@macadamforbes.com