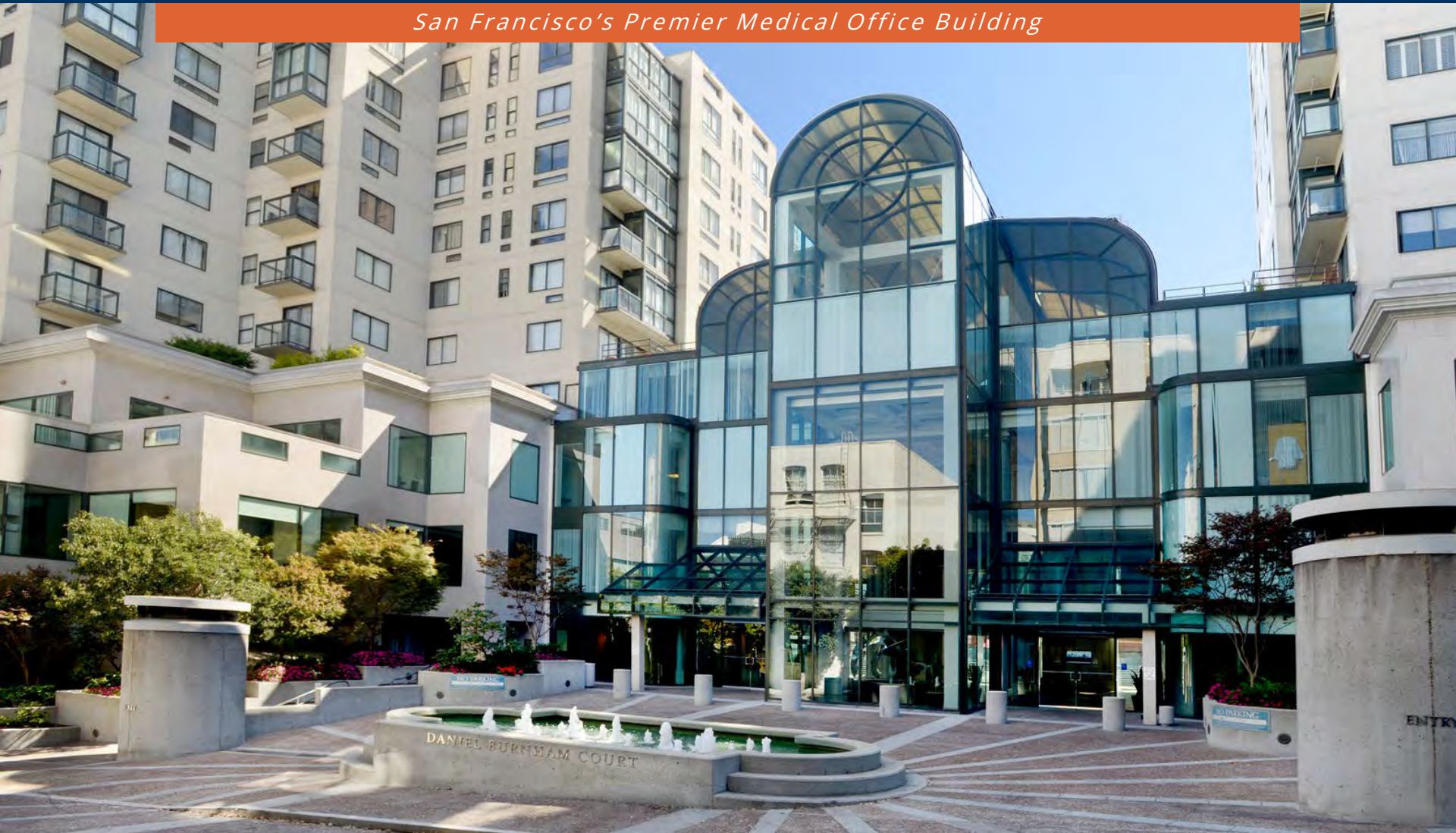


BAYSIDE REALTY PARTNERS PRESENTS  
**One Daniel Burnham Court**  
San Francisco, California

*San Francisco's Premier Medical Office Building*



TRASK LEONARD  
President and CEO  
650.533.2591  
[tleonard@baysiderp.com](mailto:tleonard@baysiderp.com)  
DRE#01152101



CAROLINE DOYLE  
Senior Vice President  
650.722.1495  
[cdoyle@baysiderp.com](mailto:cdoyle@baysiderp.com)  
DRE#01906397



BAYSIDE REALTY PARTNERS PRESENTS

# One Daniel Burnham Court

San Francisco, California

## LOCATION

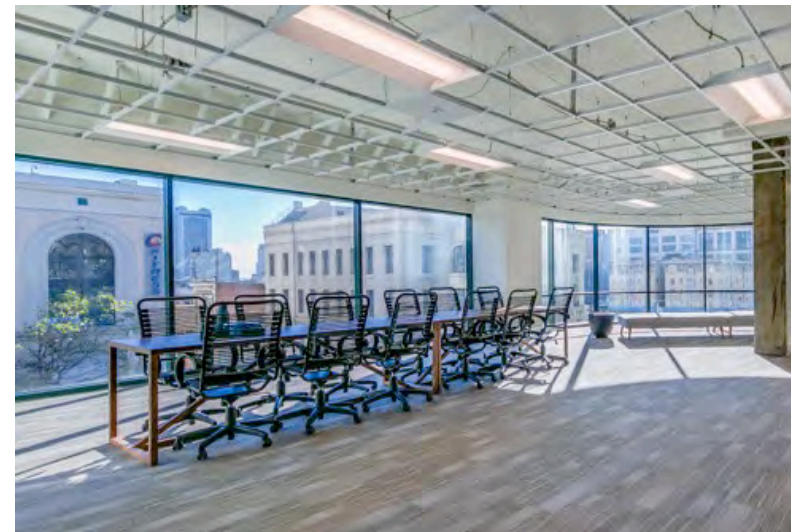
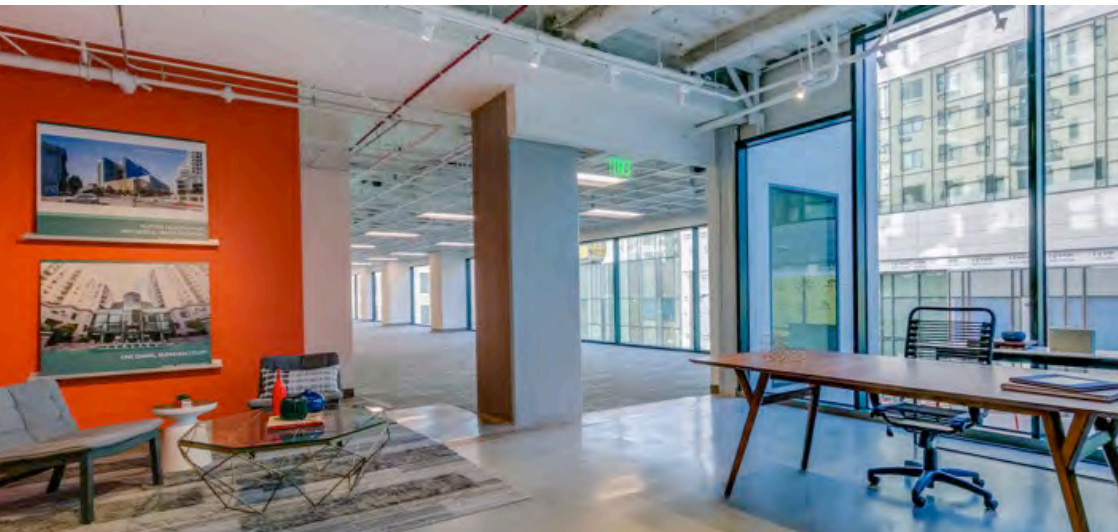
- Central San Francisco location on Van Ness Avenue (101) at Post Street
- Adjacent to Sutter's new, world class, 274-bed CPMC Van Ness Campus
- Excellent public transit options, including MUNI and BART



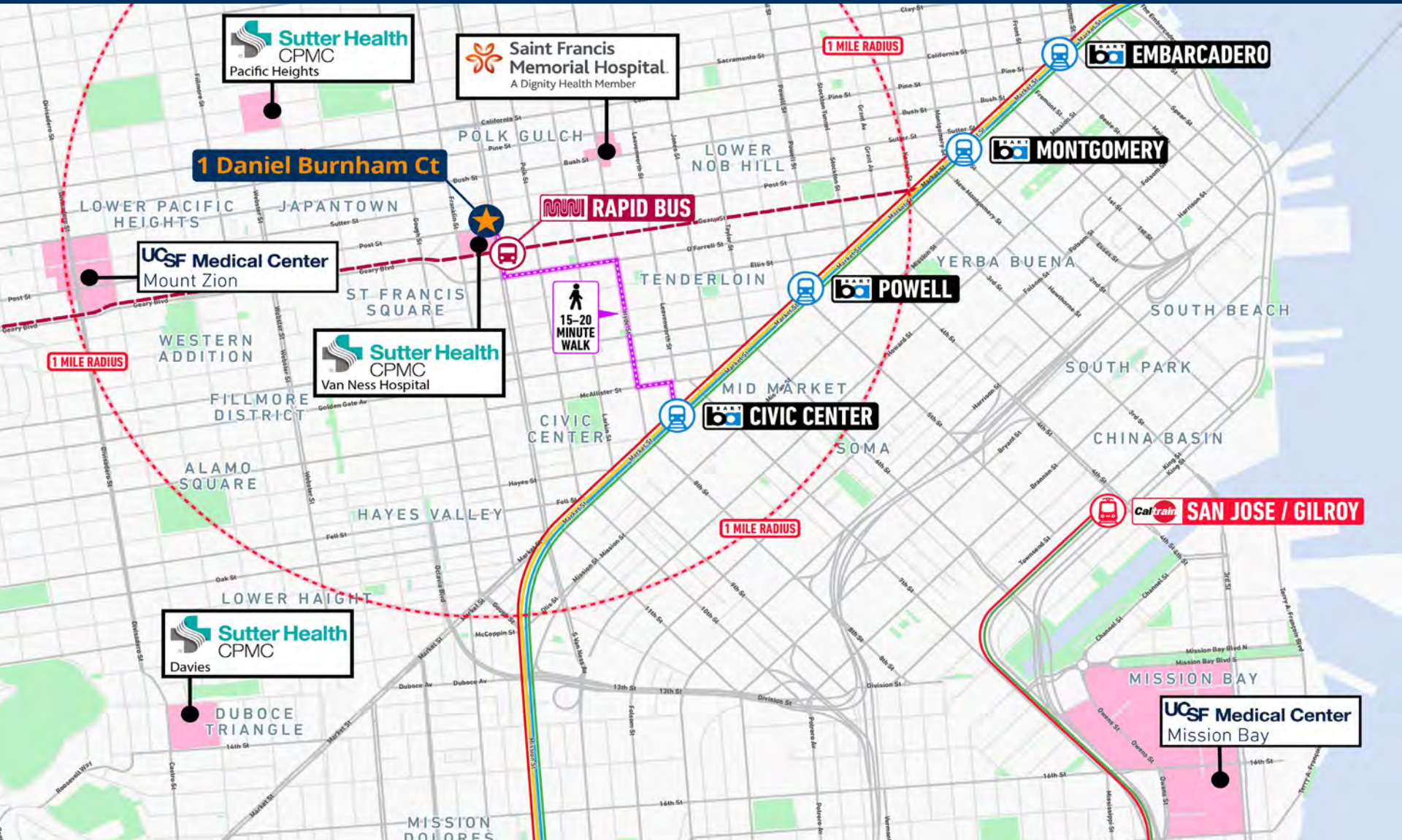
## BUILDING

- Private drop-off and pickup driveway at entrance
- Dedicated on-site parking
- Expansive lobby with seating and 24/7 security
- Stable, aggressive new institutional ownership
- On-site management and maintenance staff
- Suites available from 1,000 SF to 11,000 SF

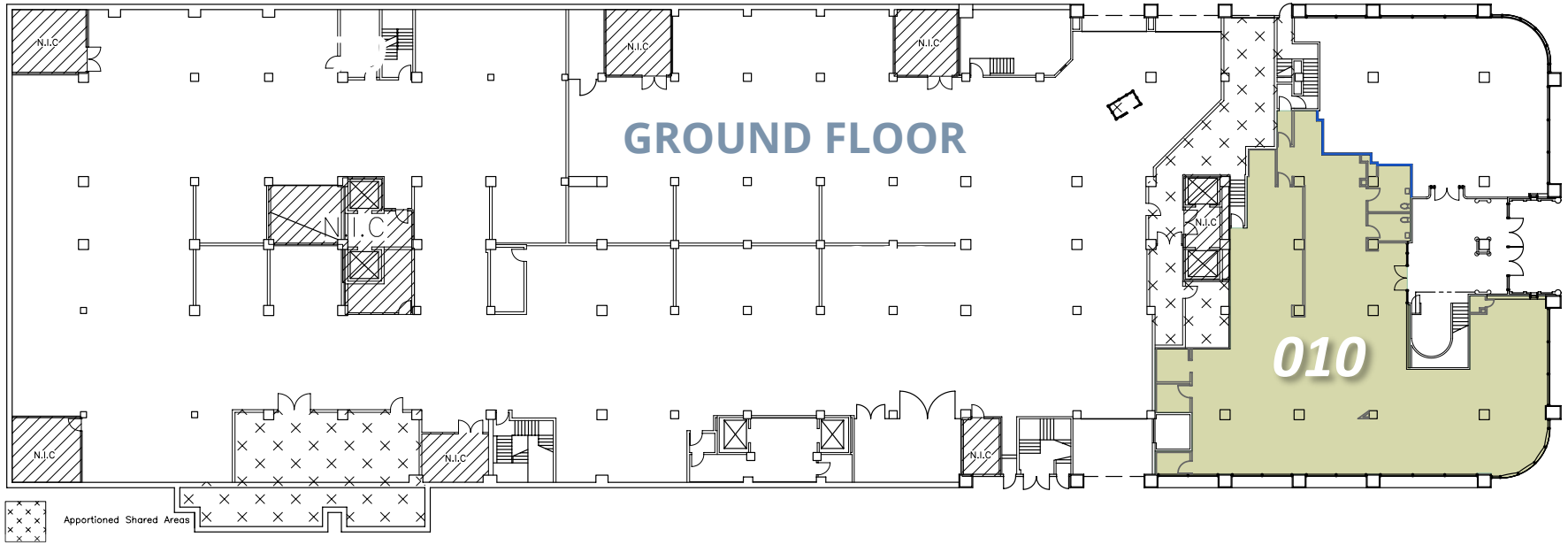
BAYSIDE REALTY PARTNERS PRESENTS  
**One Daniel Burnham Court**  
San Francisco, California



BAYSIDE REALTY PARTNERS PRESENTS  
**One Daniel Burnham Court**  
San Francisco, California



BAYSIDE REALTY PARTNERS PRESENTS  
**One Daniel Burnham Court**  
San Francisco, California

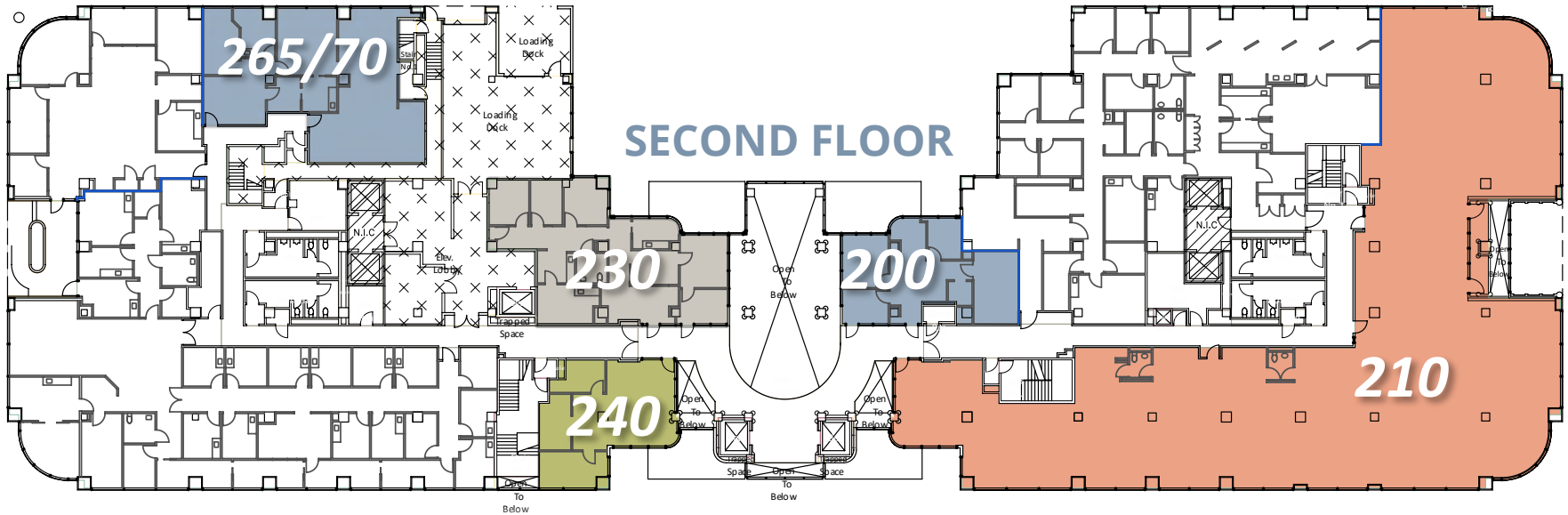


Suite 010

6,720 RSF

Extremely rare ground floor retail or medical office space at very visible corner of Van Ness/Post. Prominent building signage and very high ceilings. Available January 1, 2025

# One Daniel Burnham Court San Francisco, California



**Suite 200**                      1,277 RSF  
Excellent visibility and access from elevator lobby. Very high ceilings with unparalleled natural light. 5 existing offices

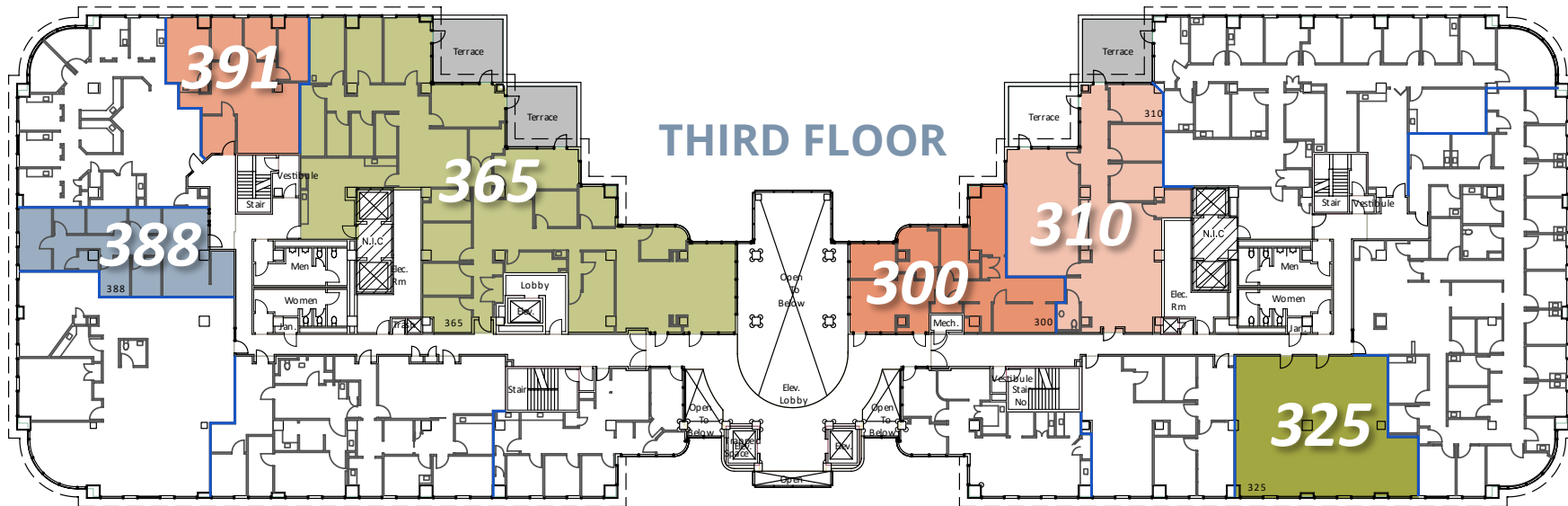
**Suite 210**                      10,967 RSF  
Excellent visibility and access to elevator lobby, sweeping views up and down Van Ness Avenue

**Suite 230**                      2,072 RSF  
**SUBLEASE:** 3 exam rooms, 6 offices, restroom. Modern built out. Located immediately off elevator lobby. Currently built out for an OBGYN  
*Lease expiration Nov 30, 2027. Additional term available from landlord*

**Suite 240**                      1,116 RSF  
Mostly open space. Immediately off elevator lobby, with excellent visibility. 4 private offices

**Suite 265/70**                      2,400 RSF  
5 exam rooms, large open space, kitchen.

# One Daniel Burnham Court San Francisco, California



**Suite 300/310**      4,531 RSF  
 Unique opportunity to lease suite with immediate proximity to elevator lobby, excellent identity and an abundance of natural light

**Suite 300**      1,565 RSF  
 5 offices/exam rooms. Close to elevator lobby. Excellent natural light. *Can be combined with Suite 310 to total 4,531 SF*

**Suite 310**      2,966 RSF  
 3 offices/exam rooms. Very large conference room. Excellent natural light. *Can be combined with Suite 300 to total 4,531 SF*

**Suite 325**      1,832 RSF  
 Open area, ready for build-out

**Suite 365**      6,282 RSF  
 12 exam rooms, 1 exam room with sink/cabinets, 4 offices, very large kitchen. Immediately off elevator lobby. Excellent natural light

**Suite 388**      1,323 RSF  
 Medical suite with 6 offices/exam rooms

**Suite 391**      1,403 RSF  
 4 offices, 1 lab. Excellent natural light. Near common area restrooms

# Meet Your Expert Team



TRASK LEONARD

President and CEO

650.533.2591

[tleonard@baysiderp.com](mailto:tleonard@baysiderp.com)

DRE#01152101



CAROLINE DOYLE

Senior Vice President

650.722.1495

[cdoyle@baysiderp.com](mailto:cdoyle@baysiderp.com)

DRE#01906397



# BAYSIDE REALTY PARTNERS

*The preeminent provider of management, leasing, construction management and accounting services for healthcare properties.*



## MARKET LEADER

- Leasing & Property Management
- Investment Sales
- Tenant Representation
- Construction Management
- Property Repositioning



## INFLUENTIAL NETWORK

- Institutional Investors
- Healthcare Systems and Healthcare Districts
- Physicians & Districts
- Private Investors



## DOMINANT FOOTPRINT

- 2 million SF leased & managed
  - 50+ MOB portfolio
  - 10,000-240,000 SF
- 500,000 SF portfolio San Francisco's largest MOB's
  - 950+ leases executed
- 500+ medical and dental tenants

**DOMINANT. EXPERT. INFLUENTIAL.**